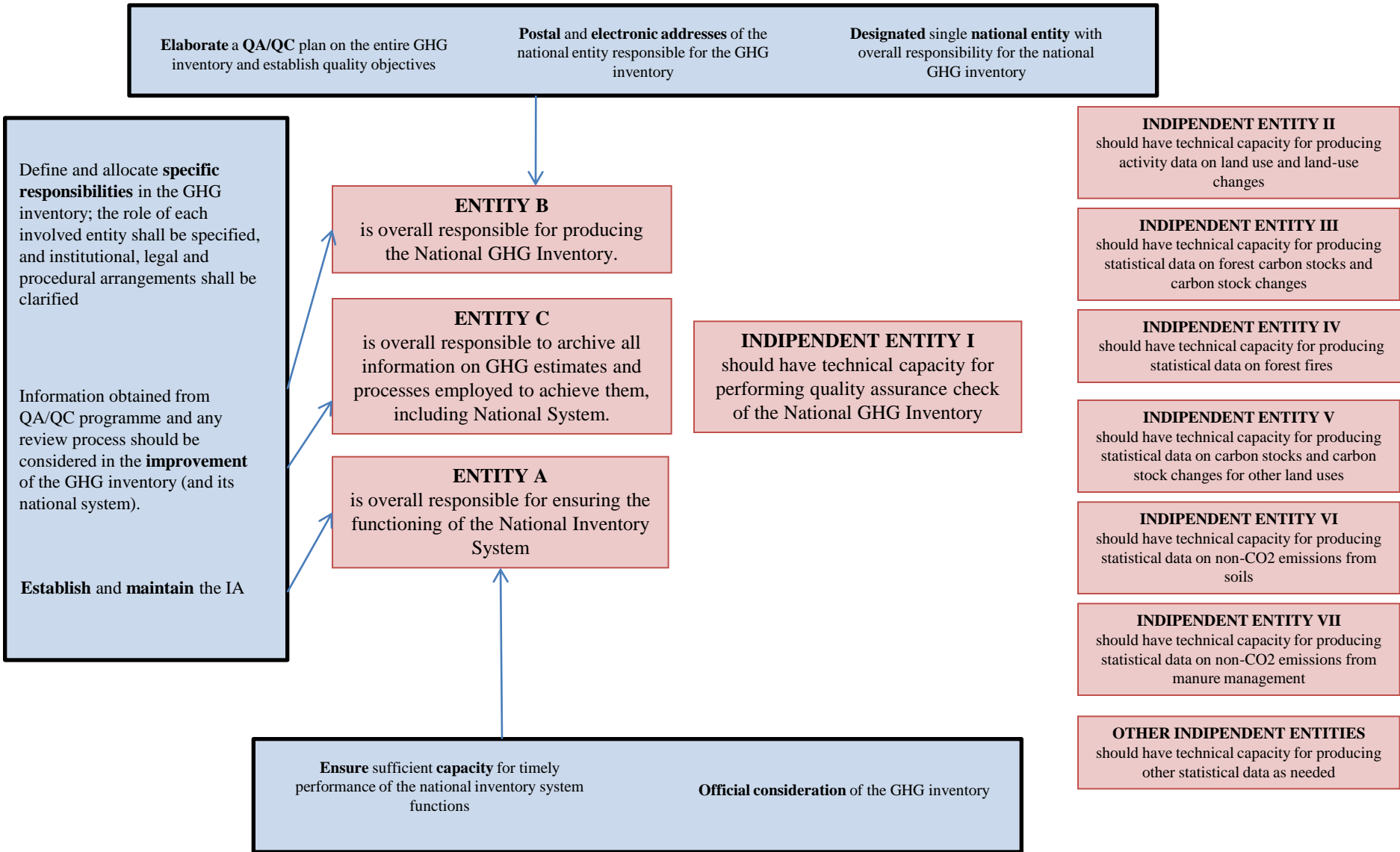


Assigned Functions for Inventory Planning



Assigned Functions for Inventory Preparation

Identify key categories

Prepare estimates in accordance with the methods described in the IPCC guidelines

Collect sufficient activity data, process information and emission factors

Make a quantitative estimate of inventory **uncertainty**

Compile the national GHG inventory

Implement inventory Quality Control procedures

ENTITY B

is overall responsible for producing the National GHG Inventory.

ENTITY C

is overall responsible to archive all information on GHG estimates and processes employed to achieve them, including National System.

ENTITY A

is overall responsible for ensuring the functioning of the National Inventory System

INDEPENDENT ENTITY I should have technical capacity for performing quality assurance check of the National GHG Inventory

INDEPENDENT ENTITY II should have technical capacity for producing activity data on land use and land-use changes

INDEPENDENT ENTITY III should have technical capacity for producing statistical data on forest carbon stocks and carbon stock changes

INDEPENDENT ENTITY IV should have technical capacity for producing statistical data on forest fires

INDEPENDENT ENTITY V should have technical capacity for producing statistical data on carbon stocks and carbon stock changes for other land uses

INDEPENDENT ENTITY VI should have technical capacity for producing statistical data on non-CO2 emissions from soils

INDEPENDENT ENTITY VII should have technical capacity for producing statistical data on non-CO2 emissions from manure management

OTHER INDEPENDENT ENTITIES should have technical capacity for producing other statistical data as needed

Based on the QA/QC results and any other review, the Party should re-evaluate the inventory planning process in order to meet the established quality objectives (**Improving**)

Provide for planned **Quality Assurance** procedures

Assigned Functions for Inventory Management

Respond to requests for clarifying information on the GHG inventory and on the national system, in a timely manner (**Transparency**)

Archive inventory information for each year.

Provide **access** to all archived information

All archived information shall be **secured** (as access and placement)

ENTITY B
is overall responsible for producing the National GHG Inventory.

ENTITY C
is overall responsible to archive all information on GHG estimates and processes employed to achieve them, including National System.

ENTITY A
is overall responsible for ensuring the functioning of the National Inventory System

INDIPENDENT ENTITY I
should have technical capacity for performing quality assurance check of the National GHG Inventory

INDIPENDENT ENTITY II
should have technical capacity for producing activity data on land use and land-use changes

INDIPENDENT ENTITY III
should have technical capacity for producing statistical data on forest carbon stocks and carbon stock changes

INDIPENDENT ENTITY IV
should have technical capacity for producing statistical data on forest fires

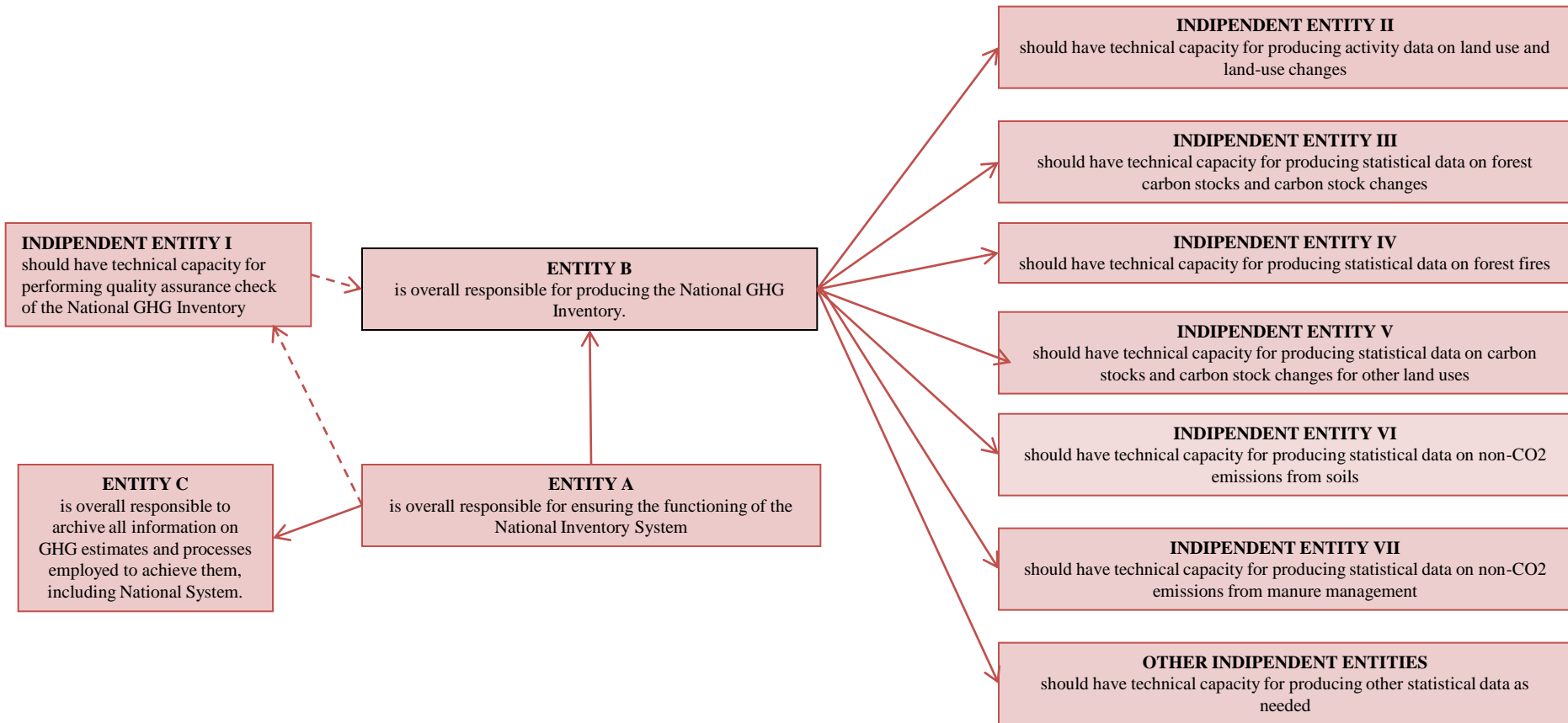
INDIPENDENT ENTITY V
should have technical capacity for producing statistical data on carbon stocks and carbon stock changes for other land uses

INDIPENDENT ENTITY VI
should have technical capacity for producing statistical data on non-CO2 emissions from soils

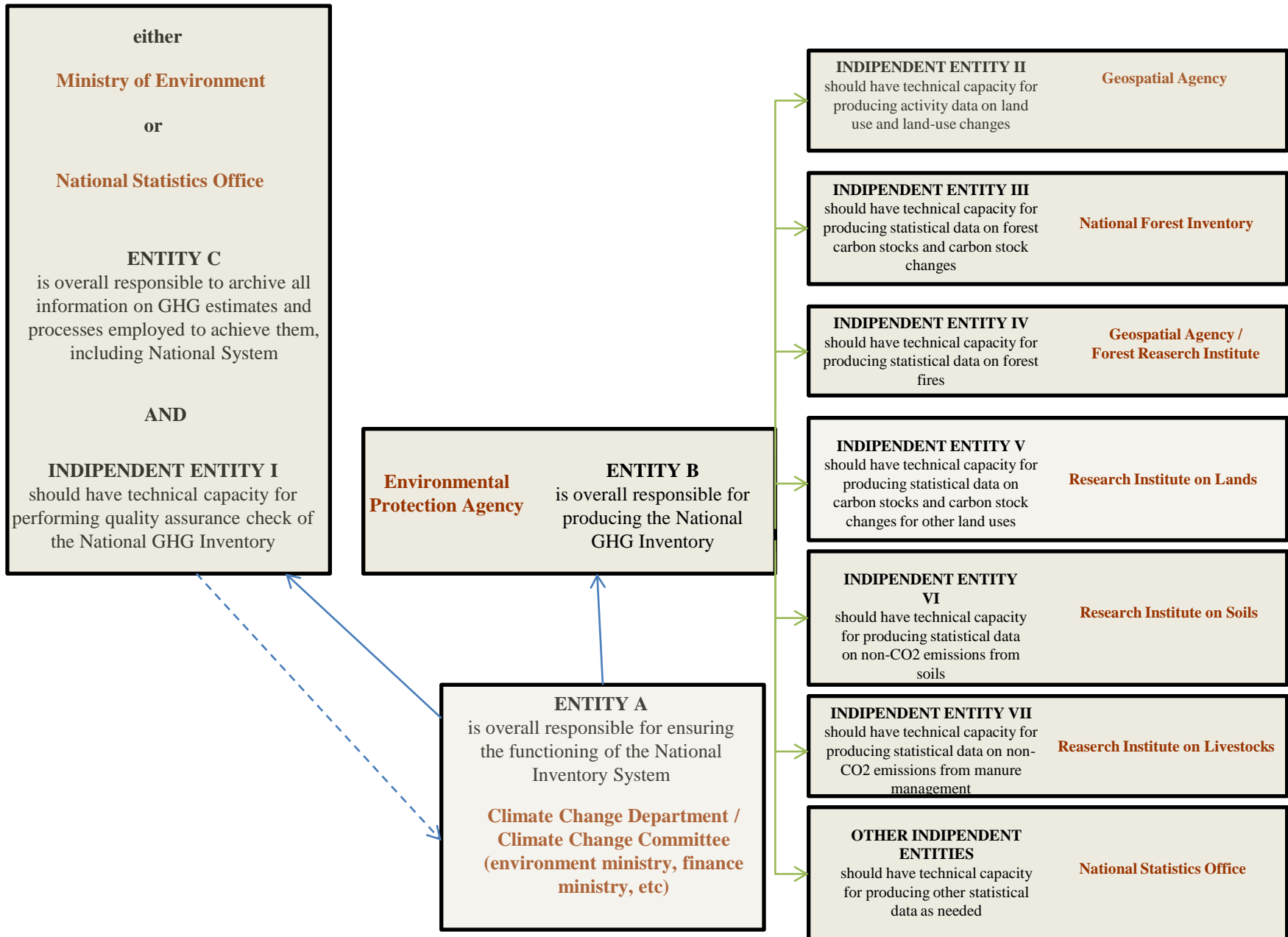
INDIPENDENT ENTITY VII
should have technical capacity for producing statistical data on non-CO2 emissions from manure management

OTHER INDIPENDENT ENTITIES
should have technical capacity for producing other statistical data as needed

Hierarchy among entities in performing the functions



Example



Example

Institutional Arrangement

A Legislative Decree establishes the National Inventory System (NIS) and gives the legal authority to the Climate Change Committee/Department (establishes it, if not present) for maintaining the NIS. Furthermore, it assigns functions to:

A periodic (annual) decree/assessment by the Climate Change Committee/Department provides for

Each entity issues and revises an internal regulation where procedures for fulfilling its functions are set. The regulation shall be periodically (annually) revised according to QA/QC and review processes

For each flux of information and data among entities a Memorandum of Understanding (MoU) shall be signed to clarify the timing of flux and the quality of data. The MoU shall be periodically (annually) revised according to QA/QC and review processes

Entity

(A) the Climate Change Committee/Department

(B) the Environmental Protection Agency

(C) National Academy/Institute for Research

Function

to ensure sufficient capacity (financial and human resources, facilities) for timely performance of the national inventory system functions

to give official consideration of the GHG inventory

to be overall responsible for delivering the national GHG inventory
to be open to be contacted by civil society for dissemination, Q&A, information

to elaborate the QA/QC plan and to set quality objectives

to collect sufficient activity data, process information and emission factors

to identify key categories

to prepare estimates in accordance with the methods described in the IPCC guidelines

to make a quantitative estimate of inventory uncertainty

to compile the national GHG inventory

to implement inventory Quality Control procedures

to respond to requests for clarifying information on the GHG inventory and on the national system

to archive all information and data ensuring safety

to provide access to all archived information

to perform/support QA assessment

improving the National Inventory System according to outcomes from QA/QC and review processes (linked to the maintenance function of the NIS)
official approval of the national GHG inventory