

Suitability of REDD+ actions vary with location – enhancing benefits, mitigating risks and minimising costs

Robert Munroe, UNEP-WCMC
10 October 2013

UN-REDD ASIA-PACIFIC REGIONAL WORKSHOP
Supporting planning for REDD+ activities through
spatial analysis



Overview



- REDD+ actions can only take place in certain locations
- Actions can be mutually exclusive
- Benefits and risks vary spatially
- Costs (implementation, transaction and opportunity) vary spatially



If REDD+ actions are expected to
yield results-based payments
+ additional benefits then...

Implementation, transaction and opportunity
costs v results-based payments = cost-effective

OR

Deliver valuable additional benefits =
worthwhile even though costs higher than
carbon income



Action: Extend PA network to reduce deforestation

Activity: reducing emissions from deforestation

Location determined by:

- Where possible
 - Natural forested PA location
 - Deforestation location
 - Future threats
 - Where PA **can** extend into
- Where to minimise costs
 - Avoid lucrative alternative land use designations
 - Size v benefit



Action: Extend PA network to reduce deforestation

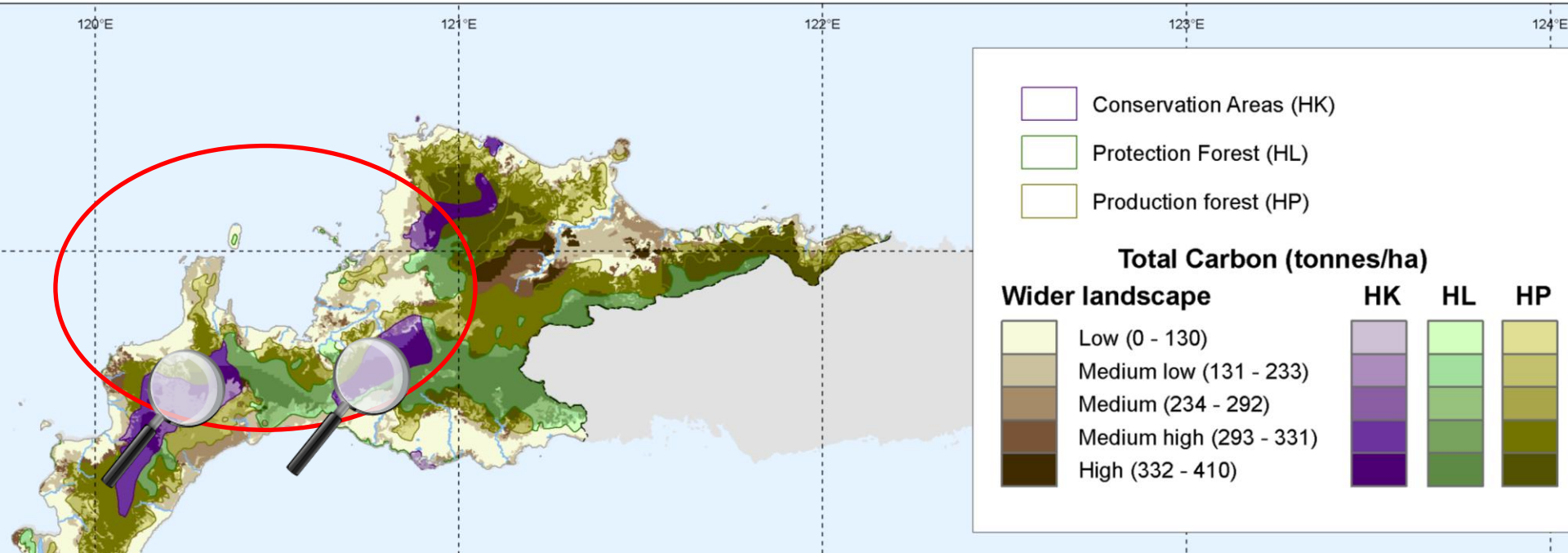
Activity: reducing emissions from deforestation

Location determined by (cont.):

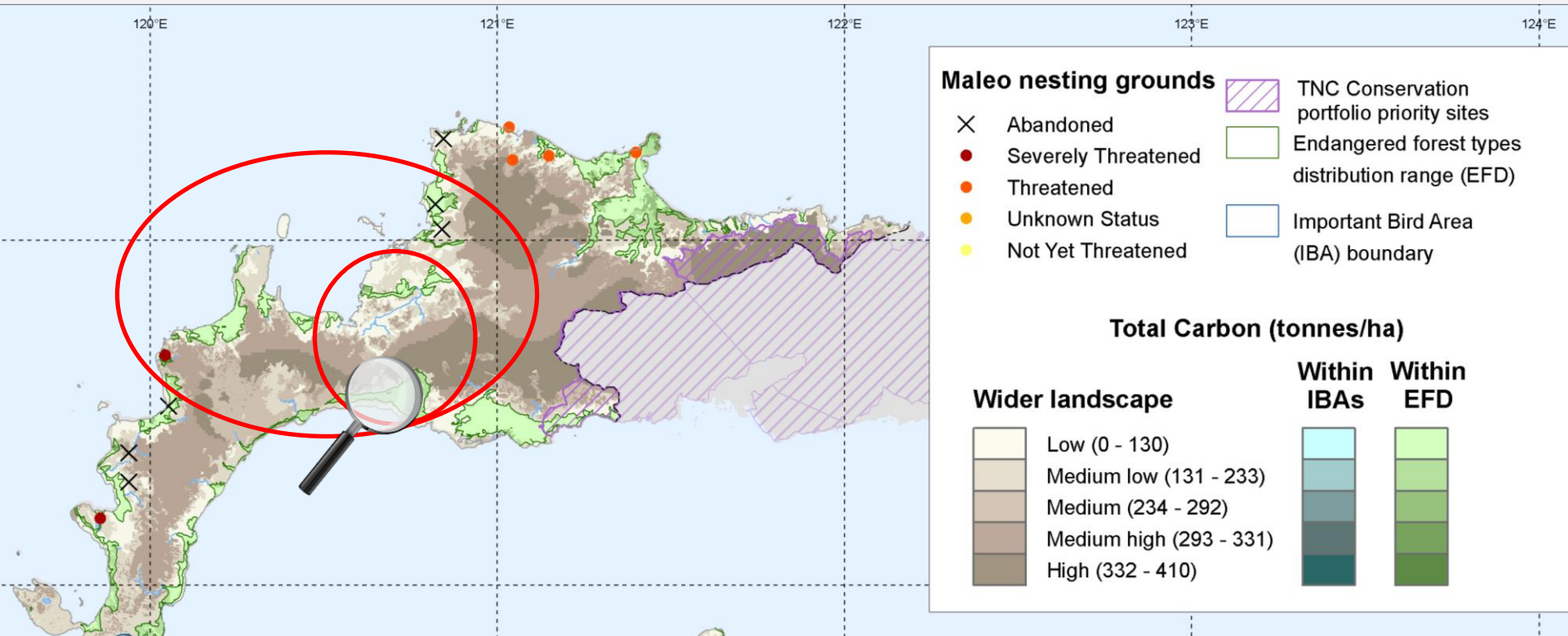
- Where to avoid risks
 - Areas of importance to IPs
 - Areas fundamental to livelihoods
 - Other areas important to biodiversity nearby
- Where are the possibilities for additional benefits
 - Extension include KBA (biodiversity conservation)
 - Accessibility, accommodation, presence of flagship species (ecotourism)
 - Watersheds, slopes, watercourses (erosion)



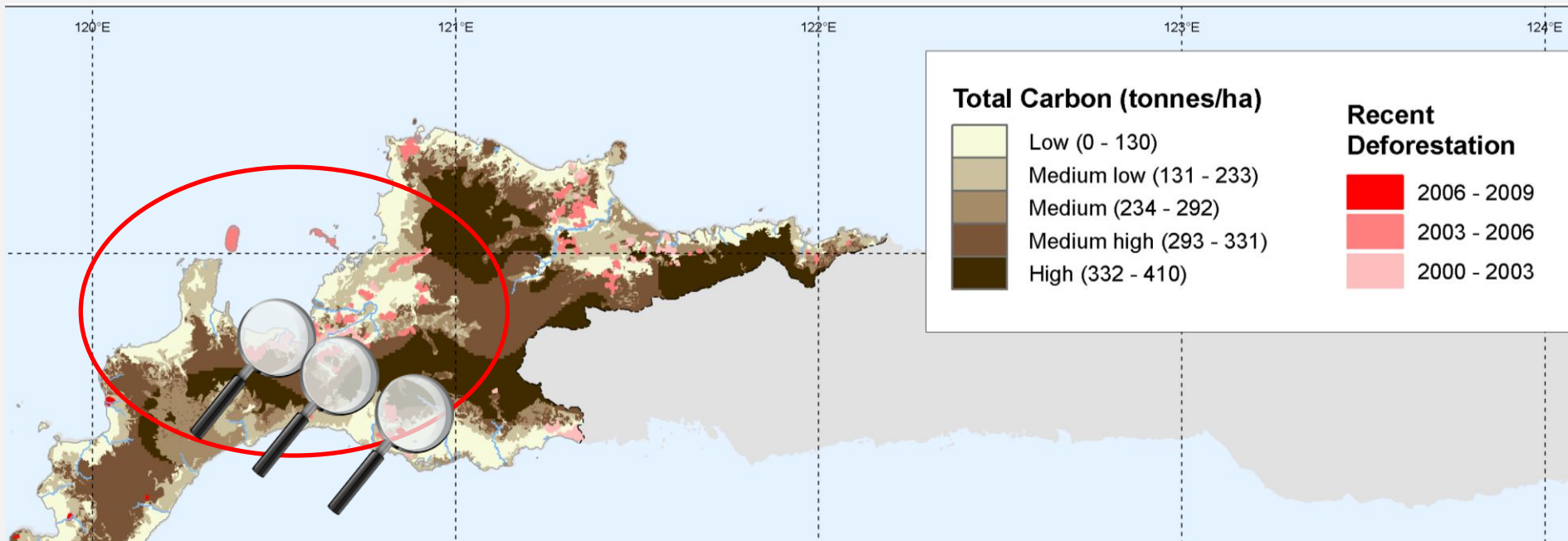
Where possible?



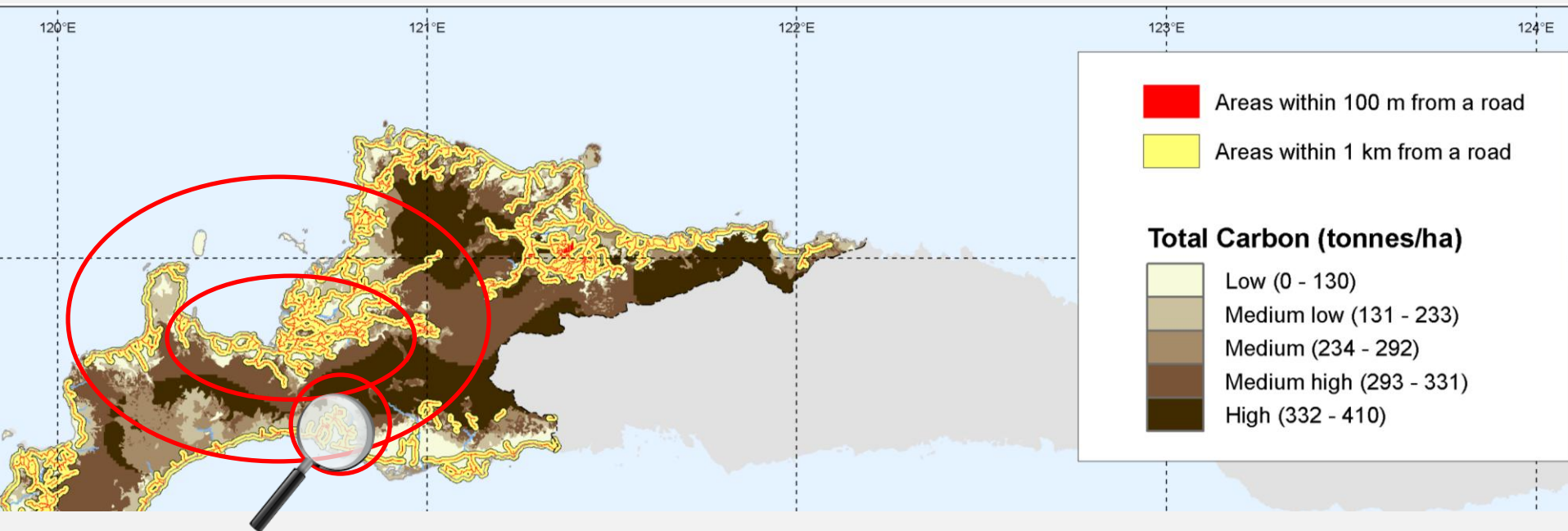
Where possible? / Benefits



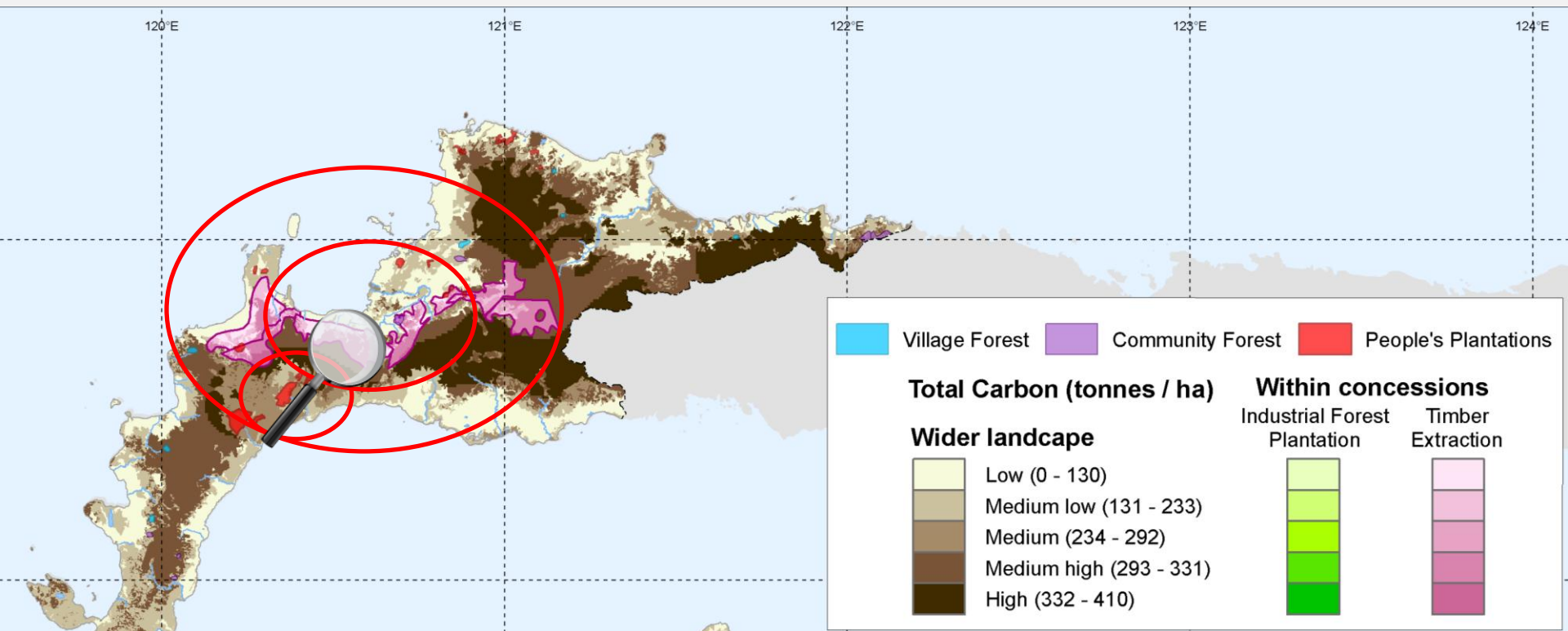
Future threat



Future threat



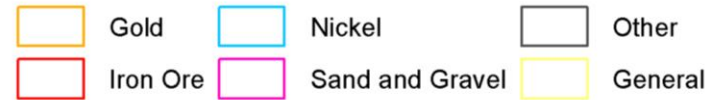
Avoid risk



Opportunity cost



Mining Concessions: Mineral type



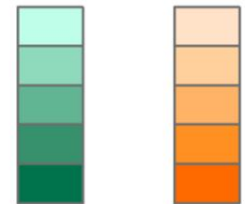
Total Carbon (tonnes / ha)

Wider Landscape



Total carbon within mining concessions

Mining	Mining
Exploration	Exploitation



Possible steps for addressing benefits and risks in REDD+ planning

Identify goals of REDD+ for the country: what benefits is REDD+ expected to deliver?

Identify REDD+ actions that can achieve those goals

Identify the potential benefits and risks associated with these actions

Identify priority areas where REDD+ actions could be implemented

Design the implementation of the REDD+ actions to promote benefits and minimize risks

Conclusions

- Spatial considerations = orientation for planning REDD+ actions
- Assumed that additional information on possible locations would be collected and participatory approach also undertaken
- Feed such spatial information into informing a spatially explicit plan for REDD+ implementation
- Combined with other sectoral plans → integrated plan for sustainable land use accepted across sectors



Aims of Day 2

- Profile **approaches and tools** for data analysis and presentation
- Share **country experiences** of using spatial planning approaches/tools
- **Priority** REDD+ spatial planning **questions** and information required to address them
- Understand utility of different approaches to **presenting spatial information** for REDD+ planning

