



Using technology
to enable
community based
forest monitoring

Patrick Newton
Chief Executive Officer
Helveta

Dr Jerome Lewis
Lecturer in Social Anthropology
University College London



Northern Congo Forest

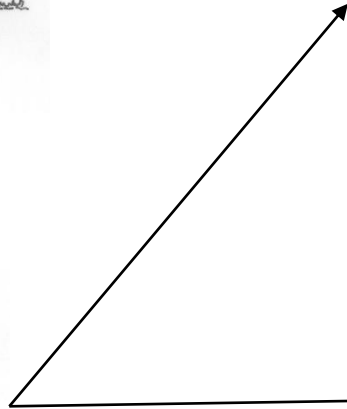
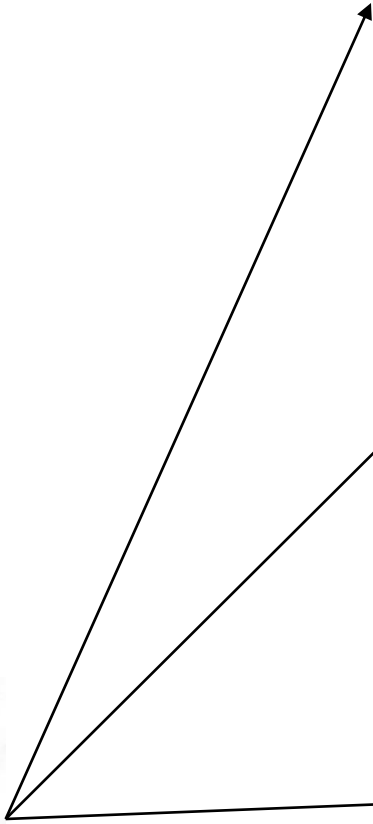
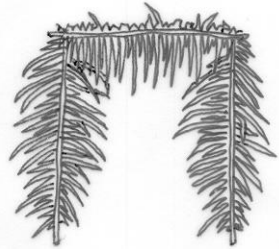
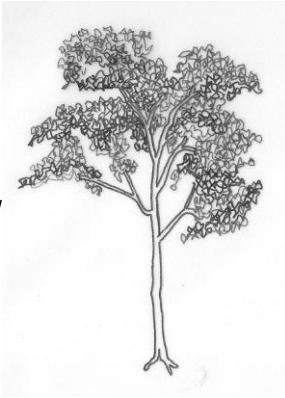
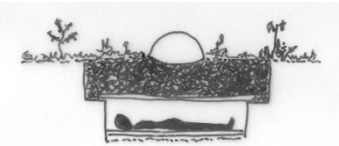
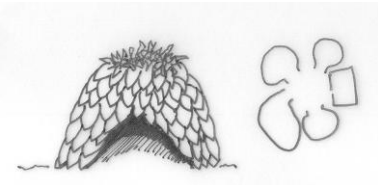
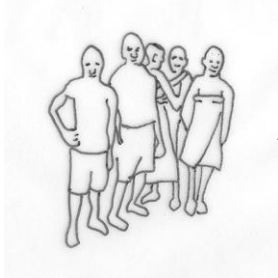
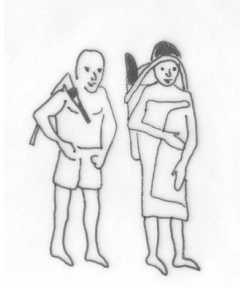
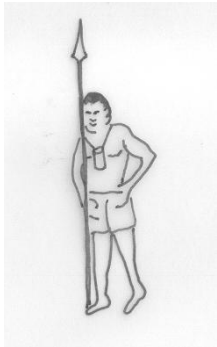




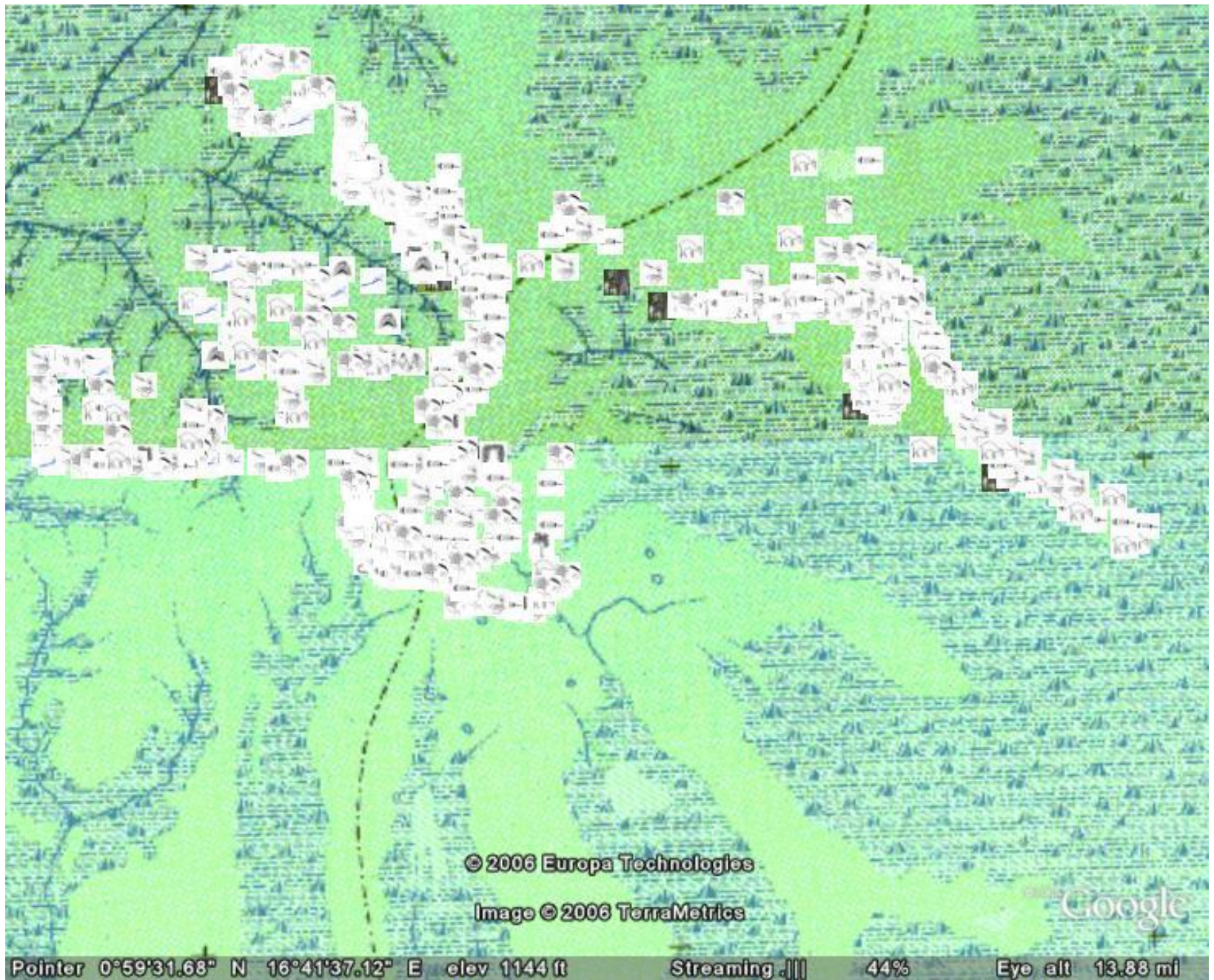
Screen 1

Screen 2

Screen 3







© 2006 Europa Technologies

Image © 2006 TerraMetrics

Google

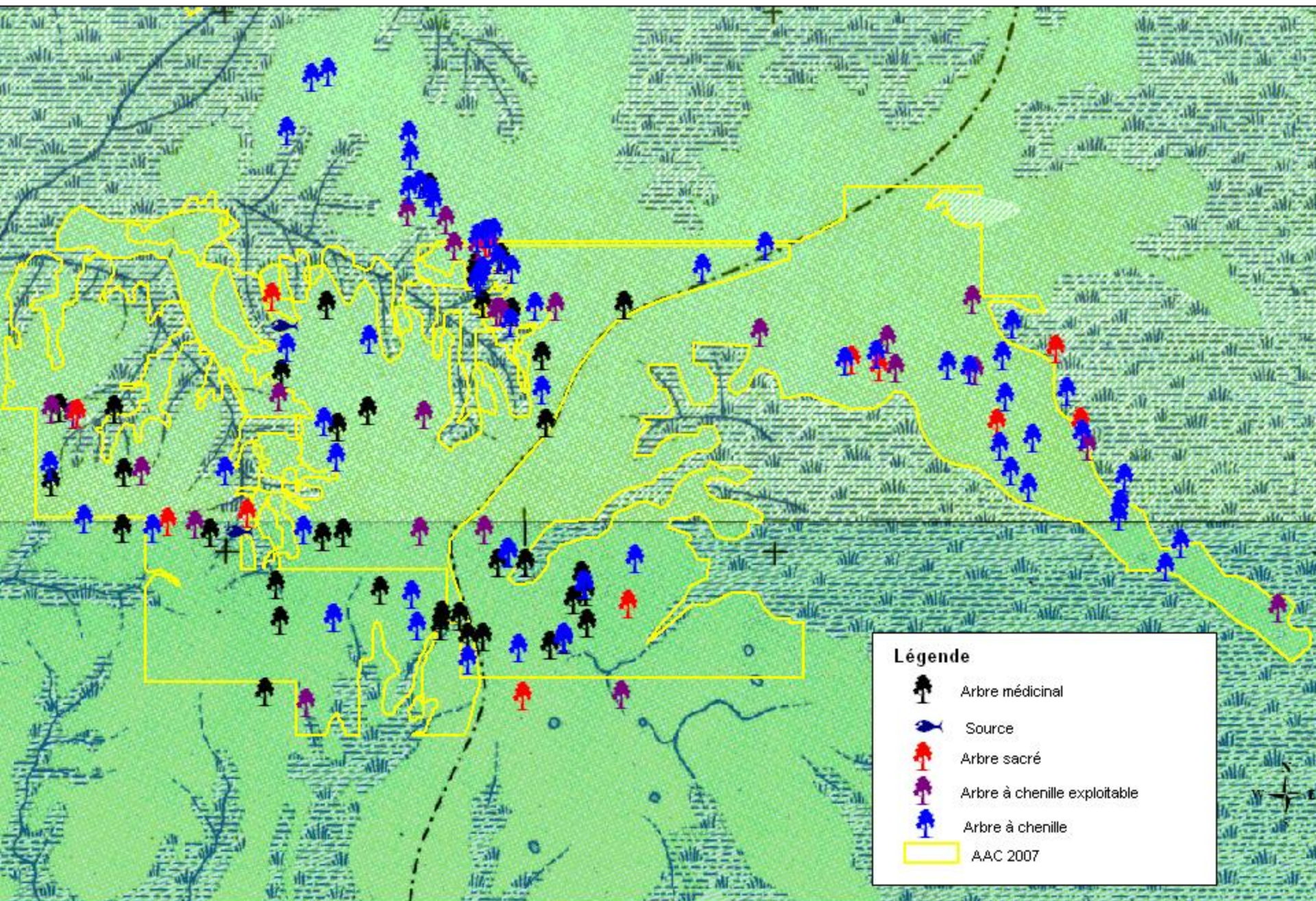
Pointer 0°59'31.68" N 16°41'37.12" E elev 1144 ft

Streaming .|||

44%

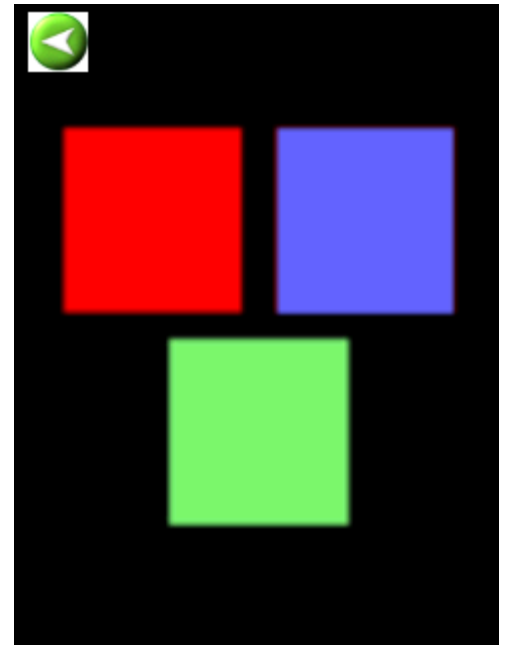
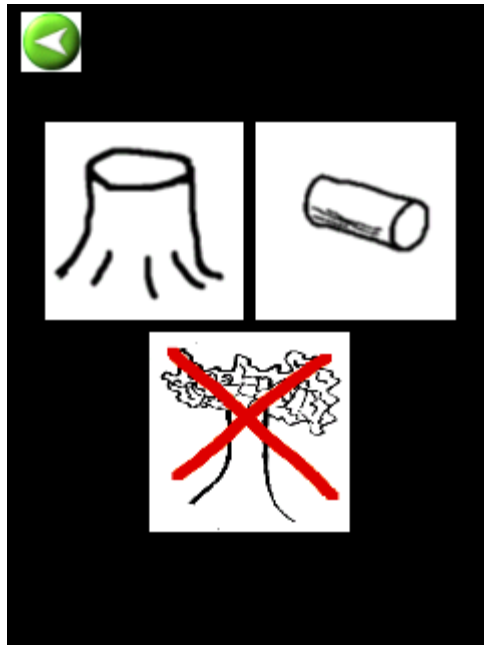
Eye alt 13.88 mi

CARTOGRAPHIE SOCIALE AAC 2007 UFA POKOLA



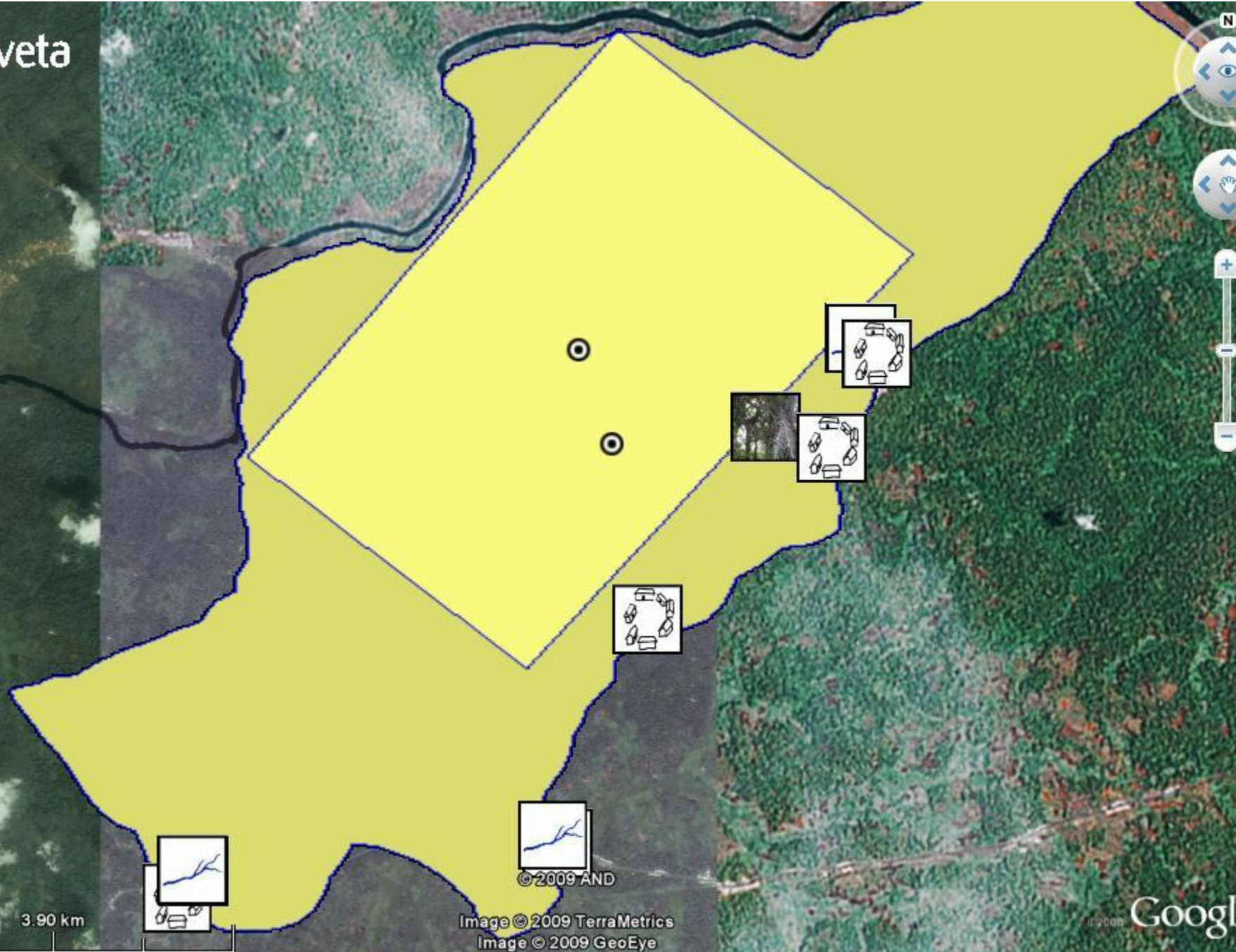


Baka, SW Cameroon









3.90 km

0.359° N 11°34.909° E

© 2009 AND

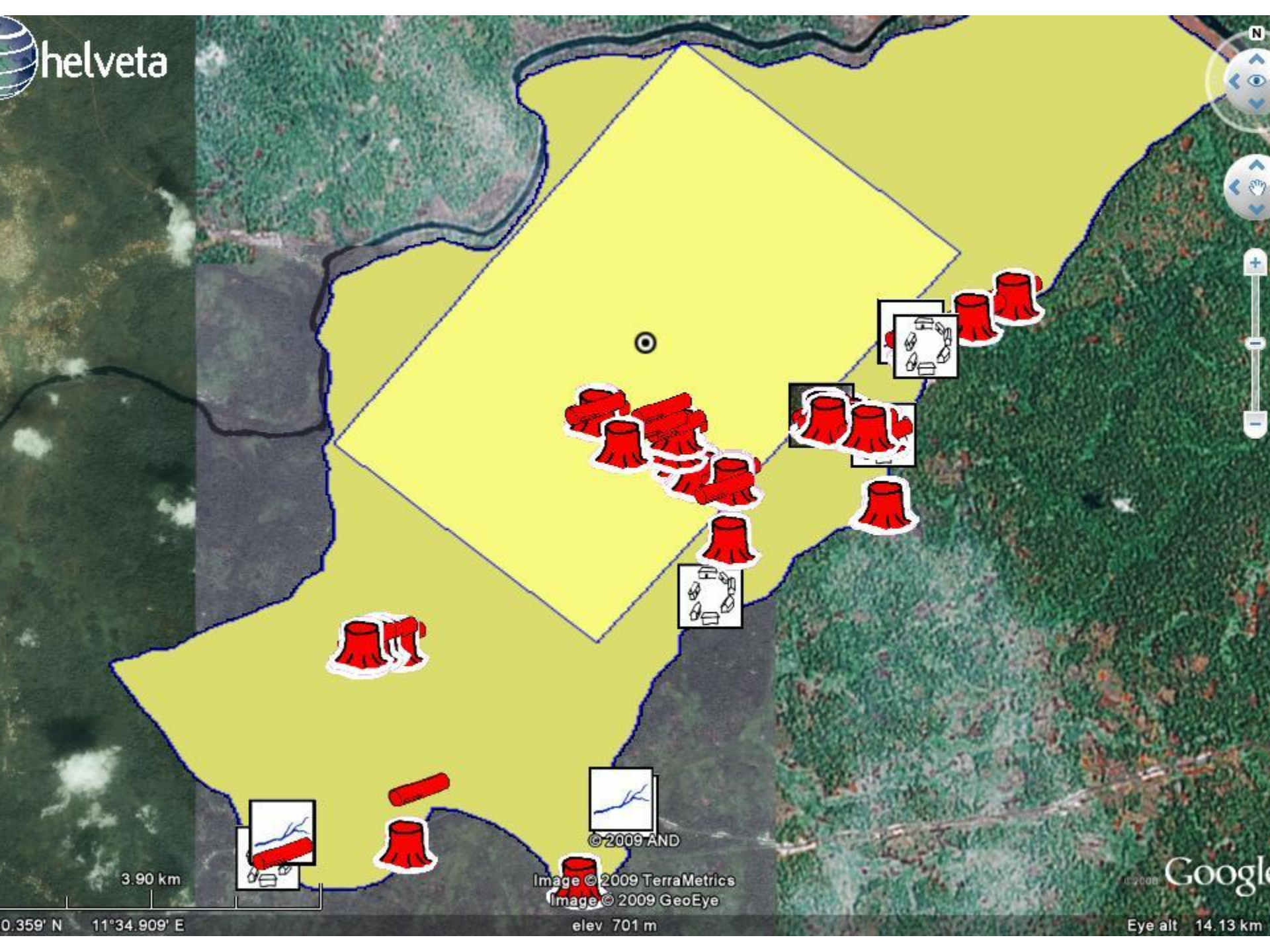
Image © 2009 TerraMetrics

Image © 2009 GeoEye

elev 701 m

© 2009 Google

Eye alt 14.13 km



3.90 km

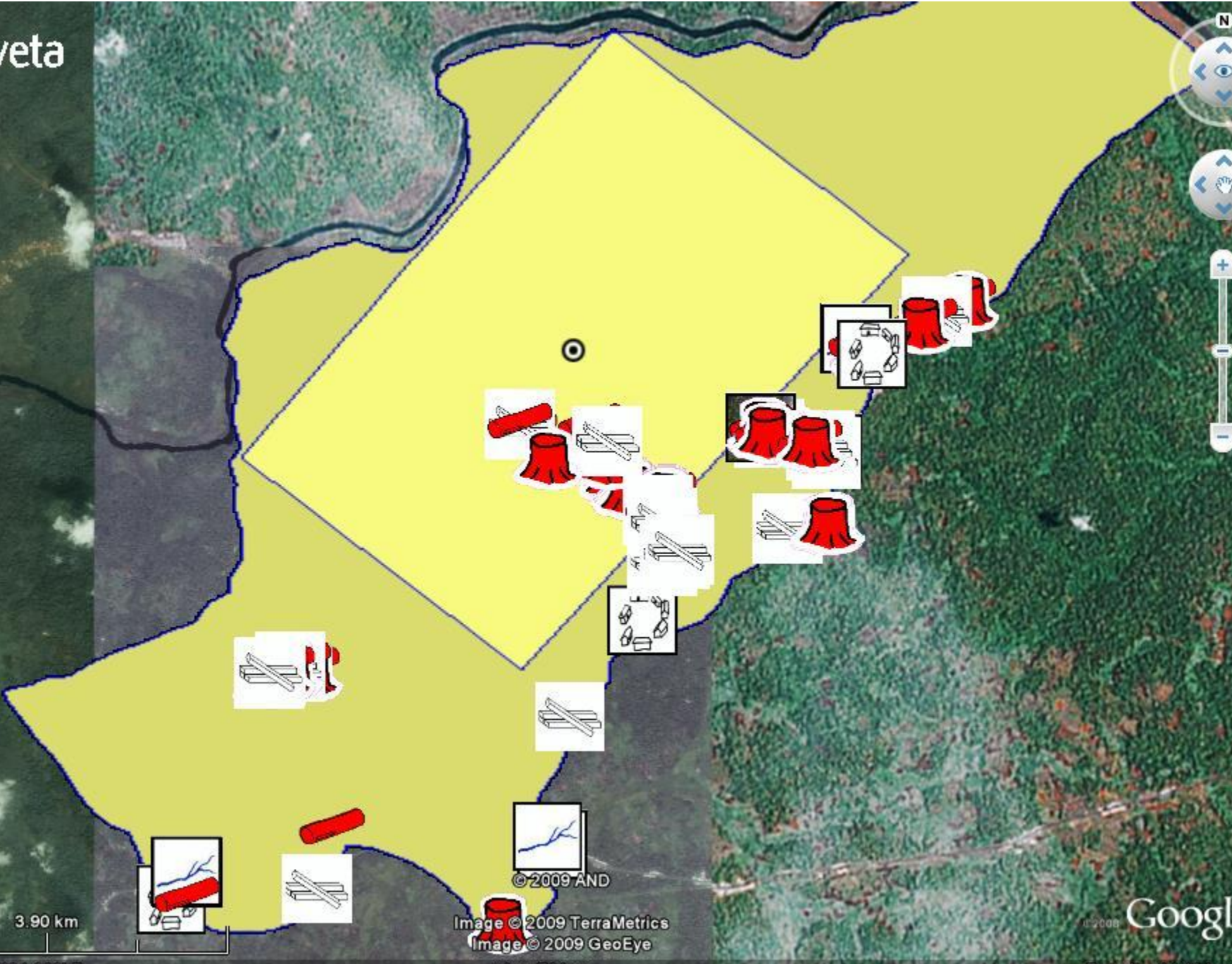
0.359° N 11°34.909° E

© 2009 AND
Image © 2009 TerraMetrics
Image © 2009 GeoEye

elev 701 m

© 2009 Google

Eye alt 14.13 km



3.90 km

0.359° N 11°34.909° E

© 2009 AND
Image © 2009 TerraMetrics
Image © 2009 GeoEye

elev 701 m

© 2009 Google

Eye alt 14.13 km




 **Goumbégerong**
4.90 km

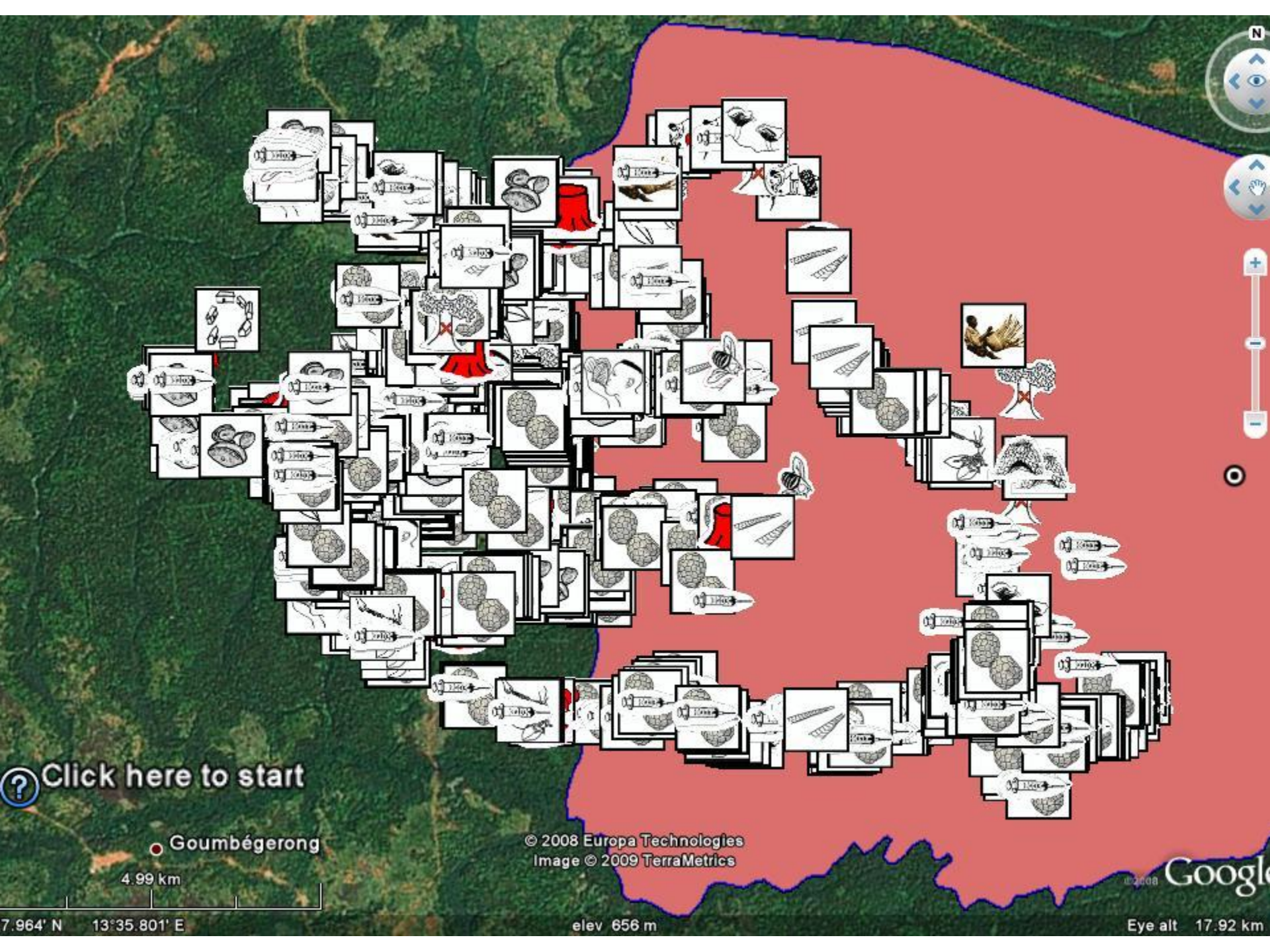
Image © 2009 TerraMetrics
© 2008 Europa Technologies


©2008 **Google**


7.998' N 13°36.014' E

elev 671 m

Eye alt 17.58 km



 Click here to start

 Goumbégerong

4.99 km

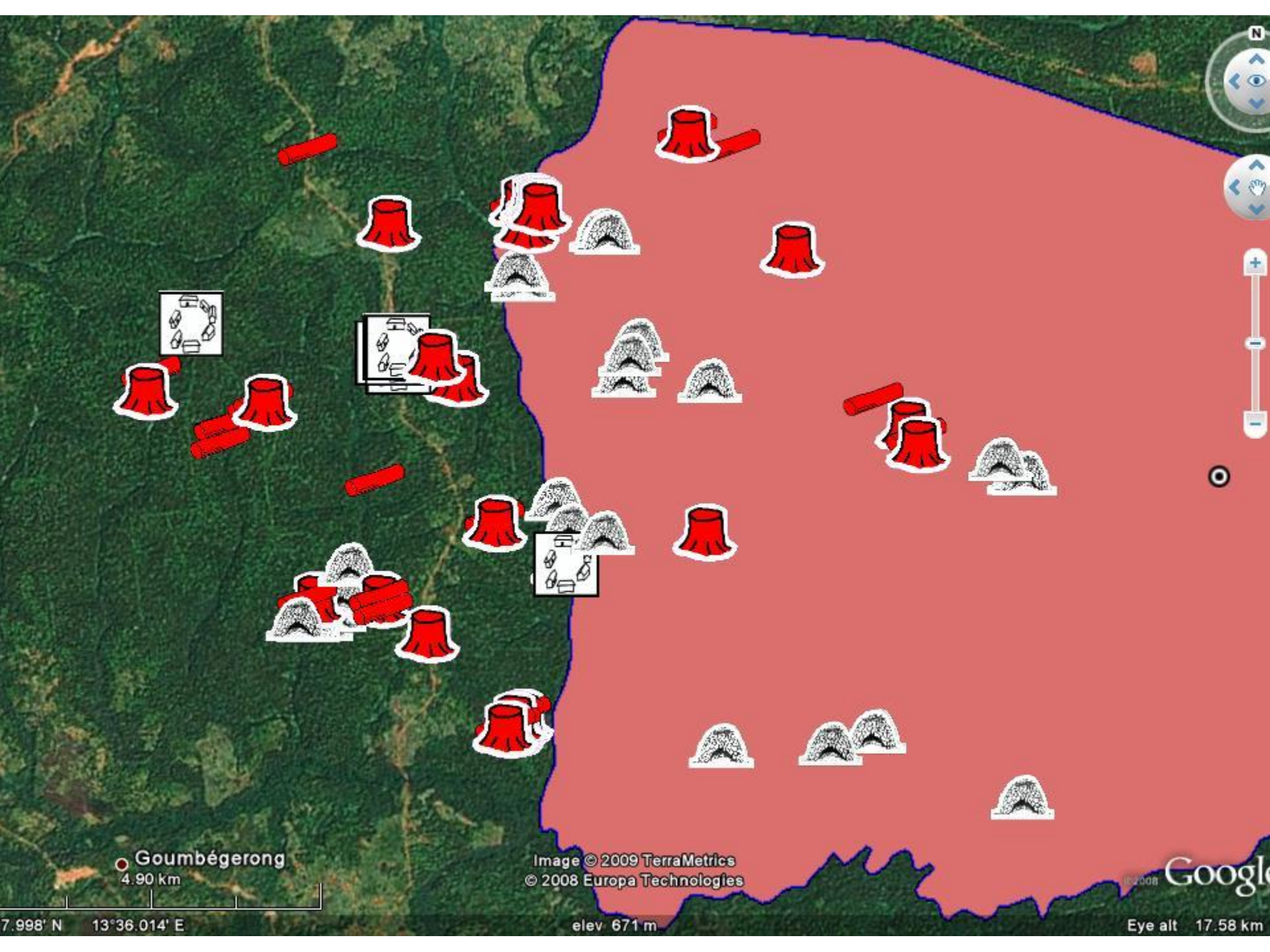
7.964° N 13.35.801° E

elev 656 m

© 2008 Europa Technologies
Image © 2009 TerraMetrics

© 2008 Google

Eye alt 17.92 km



Goumbégerong
4.90 km

Image © 2009 TerraMetrics
© 2008 Europa Technologies

elev 671 m

© 2008 Google

Eye alt 17.58 km

7.998° N 13°36.014' E



The new owners?

