



Selva Misionera



Yungas



REDD+
ARGENTINA



Bosque Chaqueño



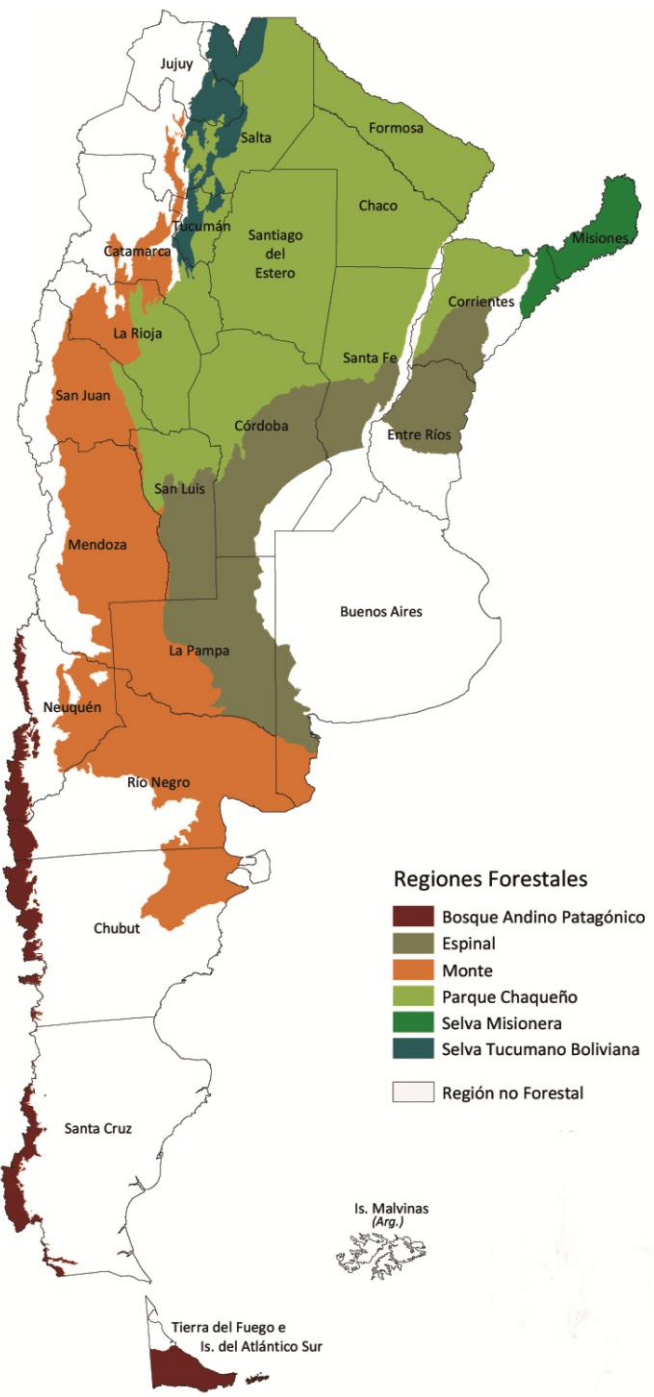
Bosque Patagónico



Secretaría de Ambiente
y Desarrollo Sustentable
de la Nación



Jefatura de
Gabinete de Ministros
Presidencia de la Nación



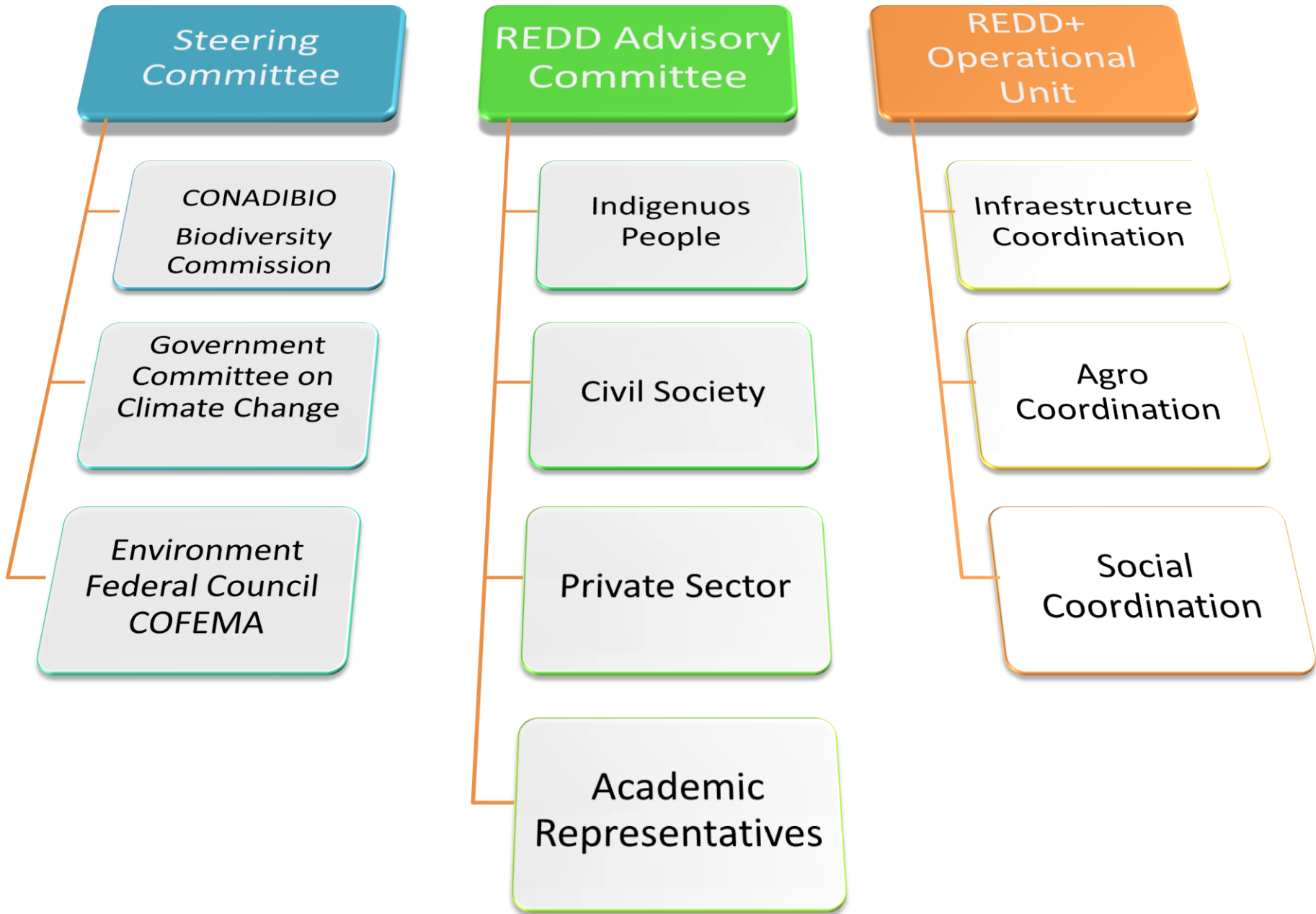
- Regiones Forestales**
- Bosque Andino Patagónico
 - Espinal
 - Monte
 - Parque Chaqueño
 - Selva Misionera
 - Selva Tucumano Boliviana
 - Región no Forestal

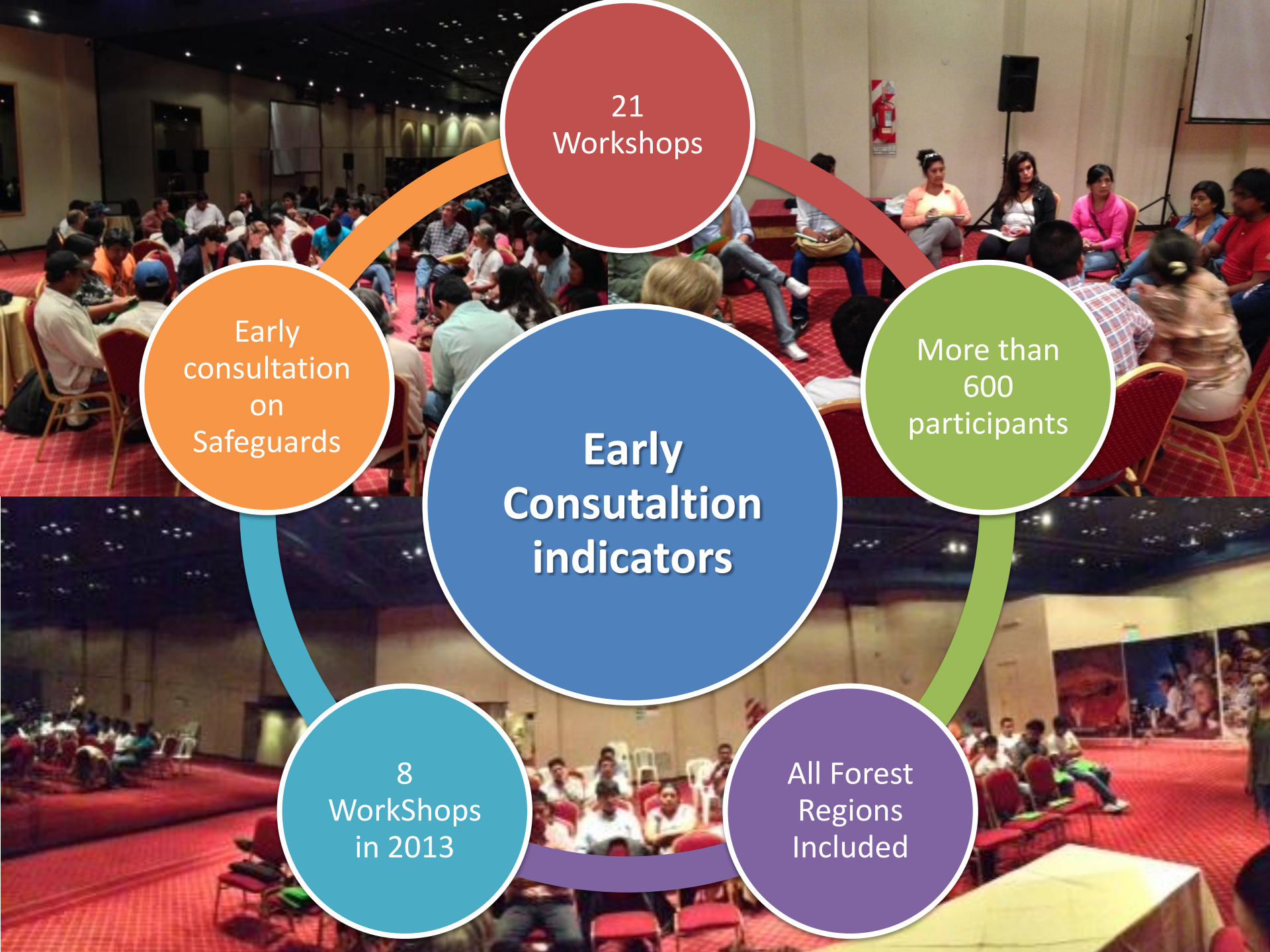
Mainland Area
2,780,400 km²

Population (2010)
40,117,096

Native Forests
29,900,000 ha

Forests Plantations
1,200,000 ha





21
Workshops

Early
consultation
on
Safeguards

More than
600
participants

Early
Consultation
indicators

8
Workshops
in 2013

All Forest
Regions
Included



REDD+ Free Prior Informed Consultation Protocol



ENCUENTRO NACIONAL DE
ORGANIZACIONES TERRITORIALES
DE PUEBLOS ORIGINARIOS

39 Indigenuos People Organizations

CONSULTATION AND PARTICIPATION

Phase 1

Information diffusion, Capacity building and consultation design



Identification of key actors and stakeholders

Phase 2

Pilot Implementation Plan (CPP) and Validation



Transparency and accountability

Phase 3

Full National Consultation



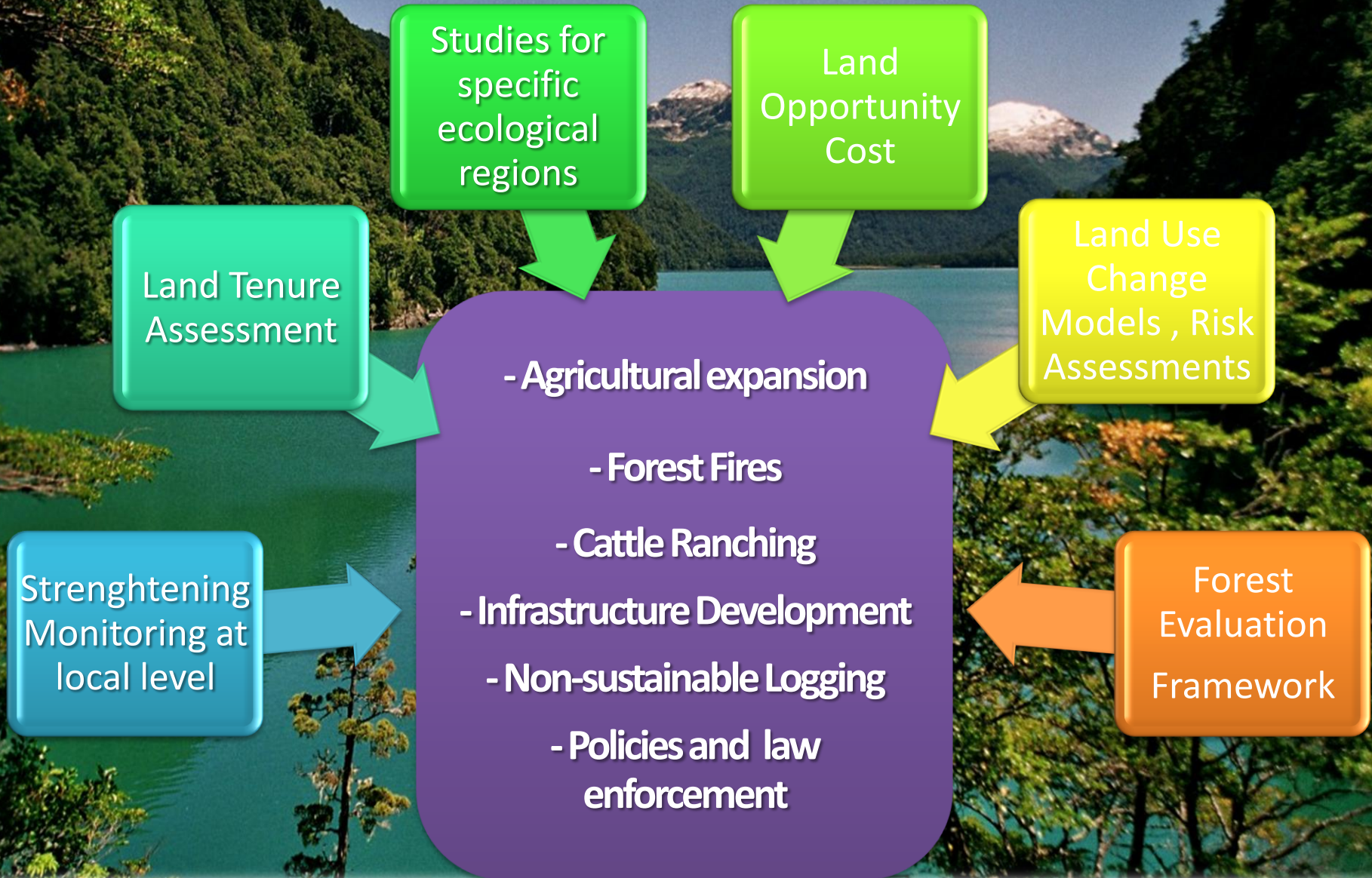
Conflict Resolution Mechanism



Ad hoc Consultation Strategy for Indigenuos Peoples

Phased Approach

Land Use Assessment and REDD+ Preparation Strategy



REDD+ Strategy Preparation

Main activities

*Strengthening
application of forest
act*

*Forest Incentives
program*

**Intersectorial
coordination**

**Stakeholders
participation**

**Environmental and
Social framework**

**Promotion of
sustainable forest
management**

**Sustainable
agriculture**

Ecotourism

REDD+ Implementation Framework

Main functions

***Financial
Management***

***Implementing
Institutions***

***Carbon
Rights***

***REDD+
Accounting
and register***

Environmental and Social Management Framework

1 Phase



Development of ESMF TORs

- Information from stakeholders
- Identificación of specific studies

2 Phase



ESMF Implementation

- Consultation and capacity building
- Risk early identification
- Problems analysis and diagnosis
- Public information on Safeguards

3 Phase



ESMF Built and Working

- Key issues identified and incorporated in the MRV
- ESMF results incorporated in the REDD+ strategy options
- Safeguards Information Systems Implemented

1937 Early Historical Data (Nat. Agricultural Census)

First National Forest Inventory of Native Forests (2005)

First National Forest Plantations Inventory (2001)

Act 26331 on Minimum Standards For Environmental Protection of Native Forests

First and Second National Communications on Climate Change (1997 and 2008)

R
E
F
E
R
E
N
C
E

RL should be take into account historical data and national circumstances (decision 4/CP15 2009)

Review of available data / Harmonization of methodologies for measurements and data collection

Sinergy with the preparation process of the Third National Communications on Climate Change

Analysis of the 1970-2013 period and the impact of the 2007 forest act

Modelling of basic economic factors (soy expansions, agroindustry, others) relating RL to drivers

Standarizations and improvemnt of available data sources (e.g. More accurate data on biomass content in different ecosystems)

W
O
R
K
I
N
G
P
R
O
G
R
A
M

Defining RL on the basis of spatially - explicit data and trends

Monitoring and Information System

FOREST MONITORING AND INFORMATION SYSTEM

CO-BENEFITS, IMPACTS AND SAFEGUARDS MONITORING AND INFORMATION

National Forest Inventory

Land Forest Monitoring

GHG Inventory

Socio-economic data

Governance Monitoring

D&D Causes Monitoring

Integrated Information System

Report and Verification

Component	2014	2015	2016	SubTotal	TOTAL UN-REDD
1a	650	345	315	1310	344
1c	300	213	163	676	443
2a	517			517	317
2b	1640	1050	585	3145	317
2c	325	245	105	675	480
2d	285	380	150	815	500
3	275	130	130	535	360
4	1075	455	345	1875	775
6	40	30	40	110	55
			GRAN TOTAL	9658	3591



Selva Misionera



Yungas

Thank you



Bosque Chaqueño



Bosque Patagónico



Secretaría de Ambiente
y Desarrollo Sustentable
de la Nación



Jefatura de
Gabinete de Ministros
Presidencia de la Nación