

Community MRV of REDD+ co-benefits

QuickTime™ and a
decompressor
are needed to see this picture.

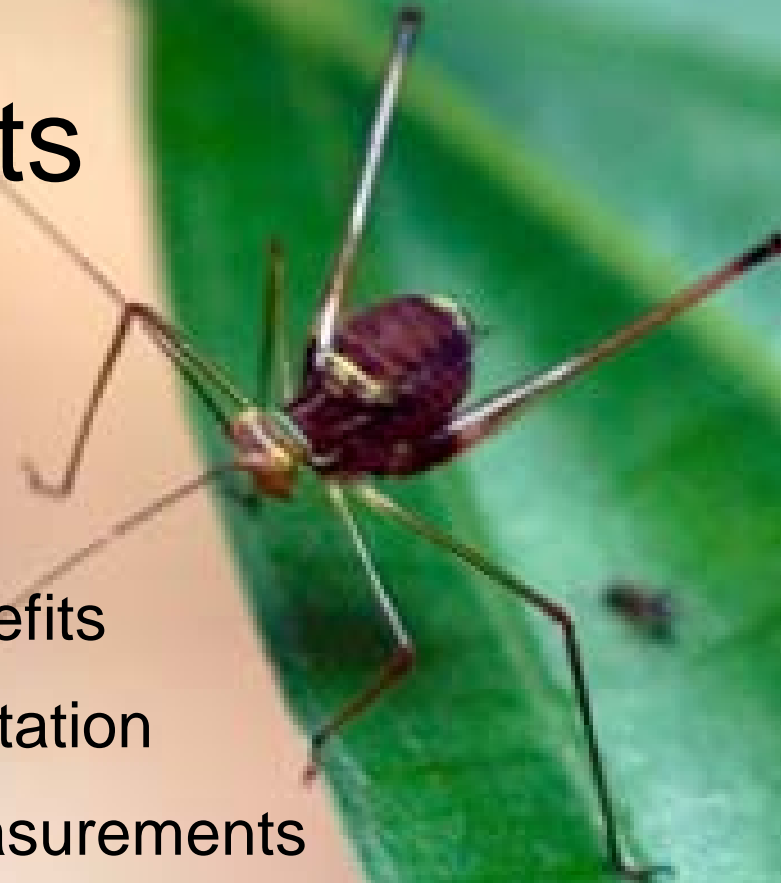


Mandar Trivedi

UN-REDD co-benefits workshop
April 2010

Main points

- Beyond co-benefits
- Mitigation-adaptation
- Locally-led measurements
 - Community MRV case study



Beyond co-benefits

QuickTime™ and a
decompressor
are needed to see this picture.

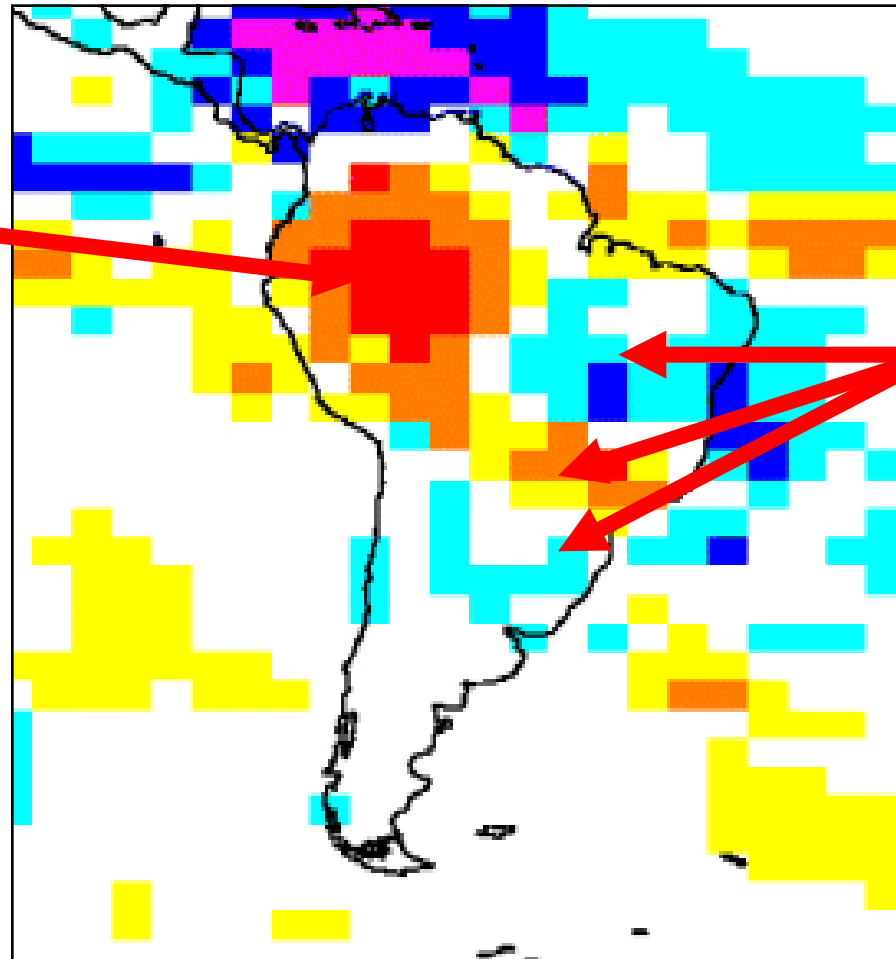
“I would like to draw the room’s attention to the co-benefits arising from healthy populations of primates and elephants - the gardeners of the forest - and urge measures to ensure the survival of these and other keystone species in forest ecosystems.”

Ian Redmond

UN Ambassador for the Year of the Gorilla

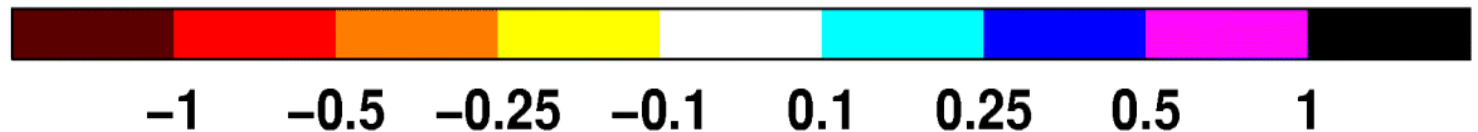
Implications of Amazon forest loss for South American climate

Further reduction in rainfall in Amazonia due to reduced “recycling” of water after forest loss



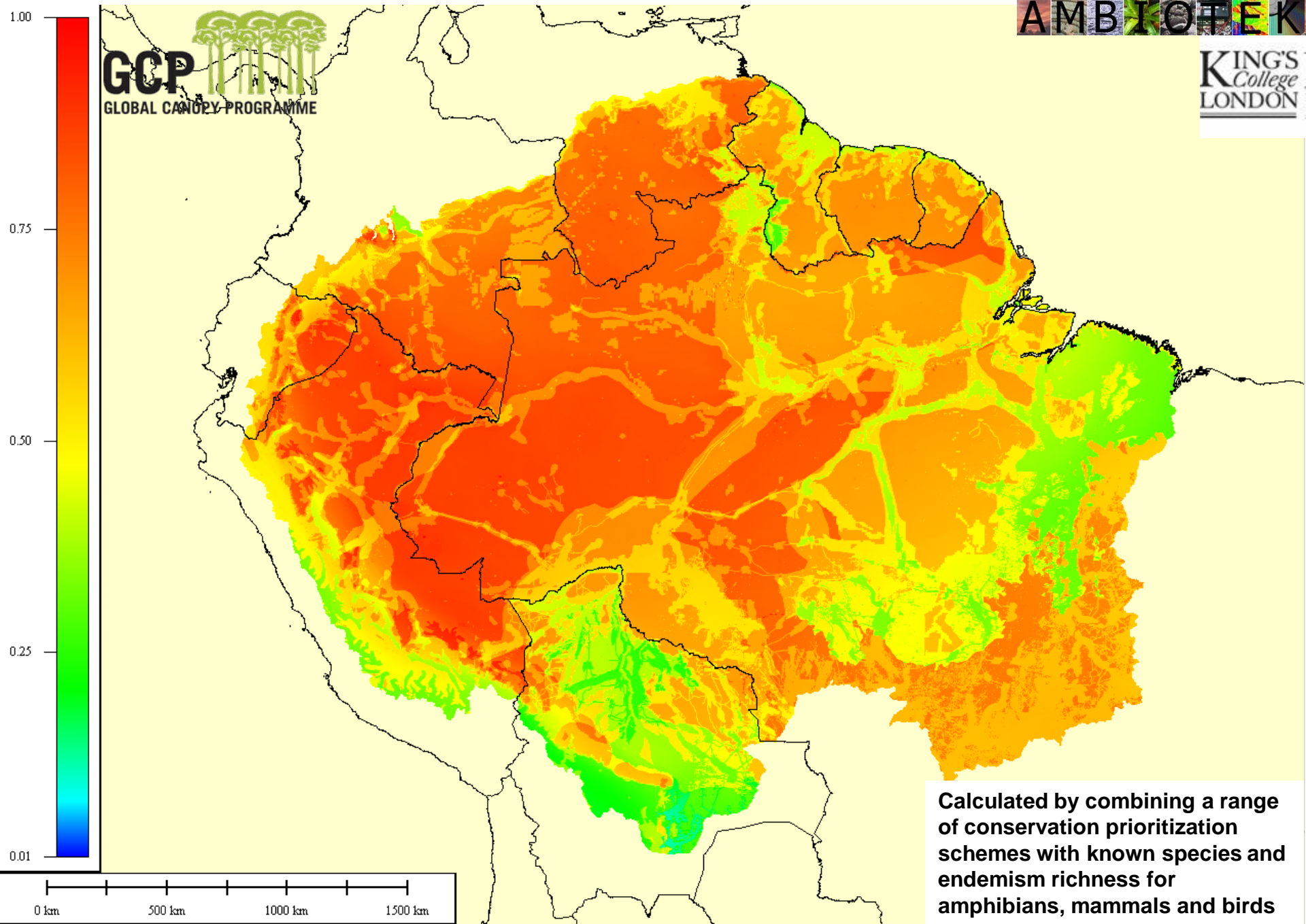
Changes in rainfall patterns across other parts of South America due to changes in atmospheric circulation

Rainfall change (mm day⁻¹) due to forest changes



Slide courtesy R. Betts

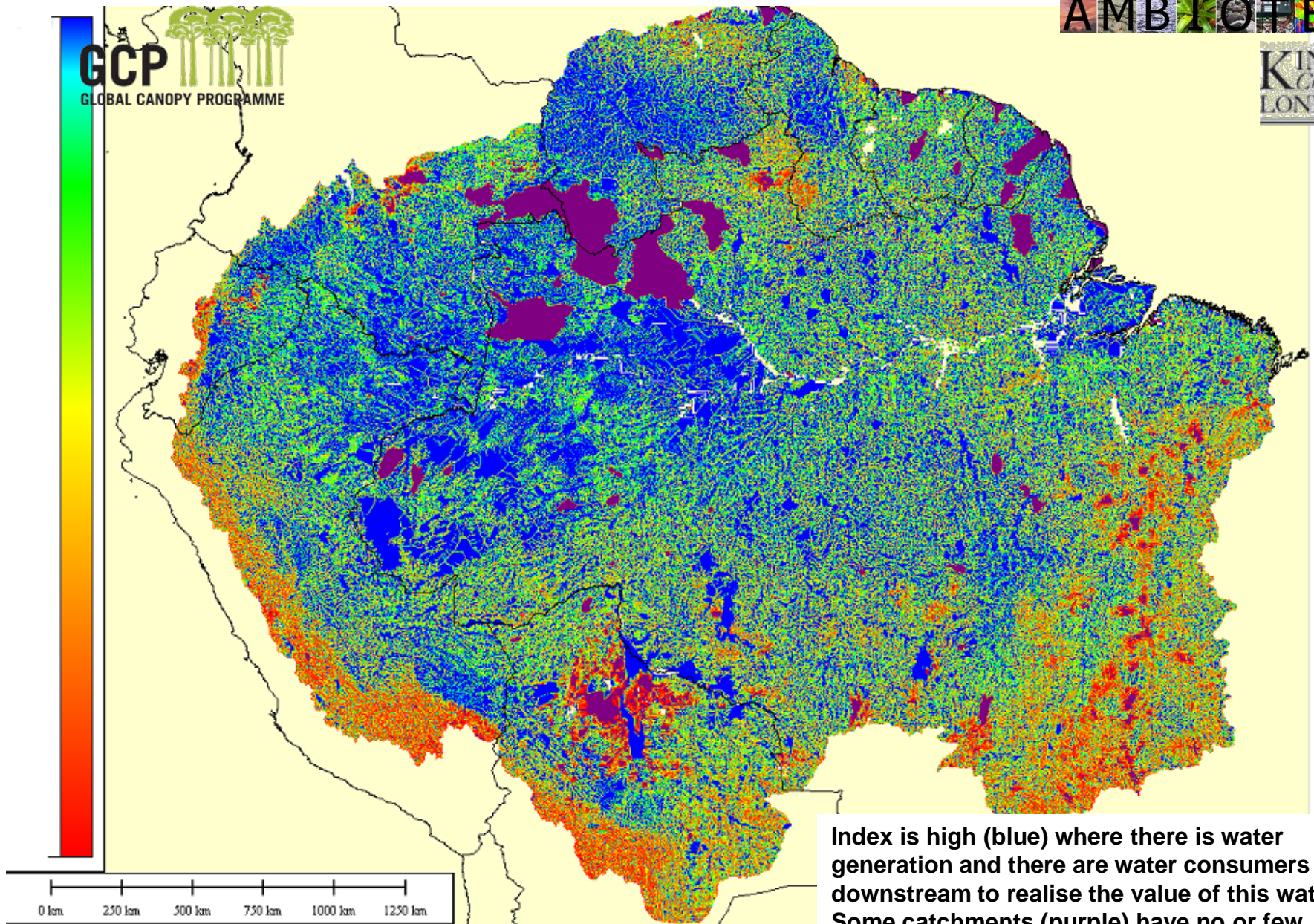
Biodiversity and ecosystem value index



Realisable water value index

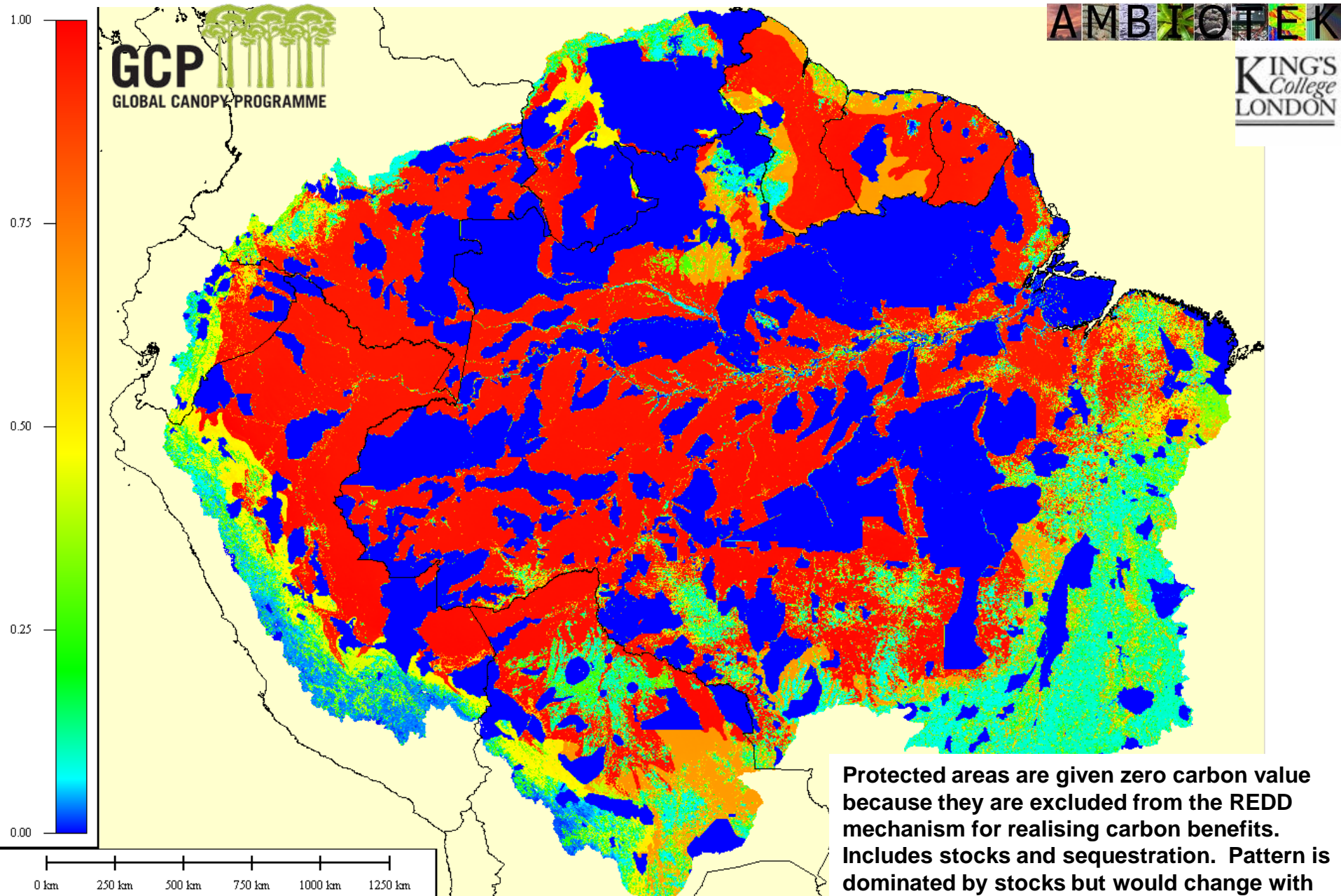
AMBIOTEK

KING'S
College
LONDON



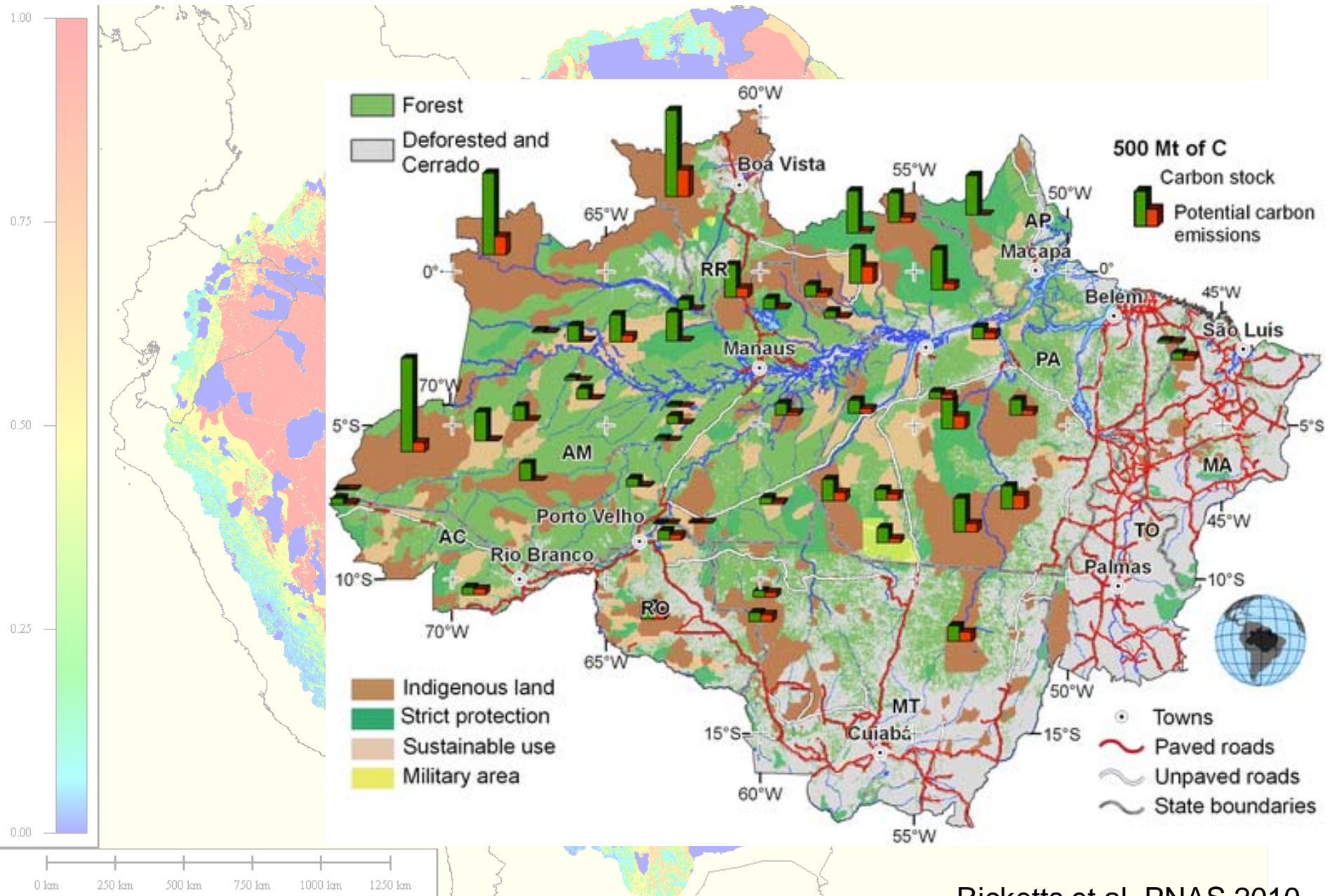
Index is high (blue) where there is water generation and there are water consumers downstream to realise the value of this water. Some catchments (purple) have no or few direct consumers downstream. Most water productive areas are in the NW of the basin

Carbon stocks and sequestration value index



Protected areas are given zero carbon value because they are excluded from the REDD mechanism for realising carbon benefits. Includes stocks and sequestration. Pattern is dominated by stocks but would change with the time period over which sequestration values are accounted.

Carbon stocks in Indigenous Lands and Protected Areas



BY RHETT BUTLER

Conservation



PROTECTING THEIR RAINFOREST

Amazon Tribes Embrace Technology to Save Land, Culture



BY RHETT BUTLER

Almir Suruí, Chief of the Suruí Indigenous Community

QuickTime™ and a
Decompressor
are needed to see this picture.



PROTECTING THEIR RAINFOREST

Amazon Tribes Embrace Technology to Save Land, Culture



Biocultural mapping (Amazon Conservation Team)

QuickTime™ and a
decompressor
are needed to see this picture.



Mapping Baka territory,
Cameroon. Source: Helveta

Kyoto-Think Global Act Local: www.communitycarbonforestry.org

Community MRV

QuickTime™ and a
decompressor
are needed to see this picture.

QuickTime™ and a
decompressor
are needed to see this picture.

- Devise monitoring scheme:
 - biodiversity
 - ecosystem services (local-global)
 - wellbeing
 - benefit-sharing
 - landscape approach
- Couple ‘community’ and ‘academic’ knowledge
- Link local ‘MRV’ to national MRV system
- Scalable

Thanks

- Mark Mulligan, King's College London
- Richard Betts, Met Office Hadley Centre
- Patrick Meir, University of Edinburgh
- Iwokrama International Centre & North Rupununi District Development Board

- DFID/NERC/ESRC "ESPA" Programme
- Prince Albert II of Monaco Foundation

Email: m.trivedi@globalcanopy.org

QuickTime™ and a decompressor are needed to see this picture.





Standalone, non-partisan,
multi-language online
platform focused on **sharing**
REDD+ resources, **identifying**
REDD Readiness best
practice, and **facilitating**
collaboration.

theREDDdesk.org

