



Targets, carbon stocks and deforestation reduction:  
Proposed benefit sharing in the Brazilian Amazon  
linking national and sub-national targets

Paulo Moutinho

[moutinho@ipam.org.br](mailto:moutinho@ipam.org.br)

[www.ipam.org.br](http://www.ipam.org.br)

Forest Day, Dec 13<sup>th</sup> 2009, Copenhagen

# BRAZIL

**60% = EMISSIONS  
BY DEFORESTATION  
(~ 170 MTC/YEAR;  
Amazon, 2008)**

**40% = FOSSIL FUEL  
(100 MTC/YEAR, ref.  
2008):**

**> 1.9 million ha/ano**

**~ 68 million ha  
deforested**

**18% of the brazilian  
Amazon**



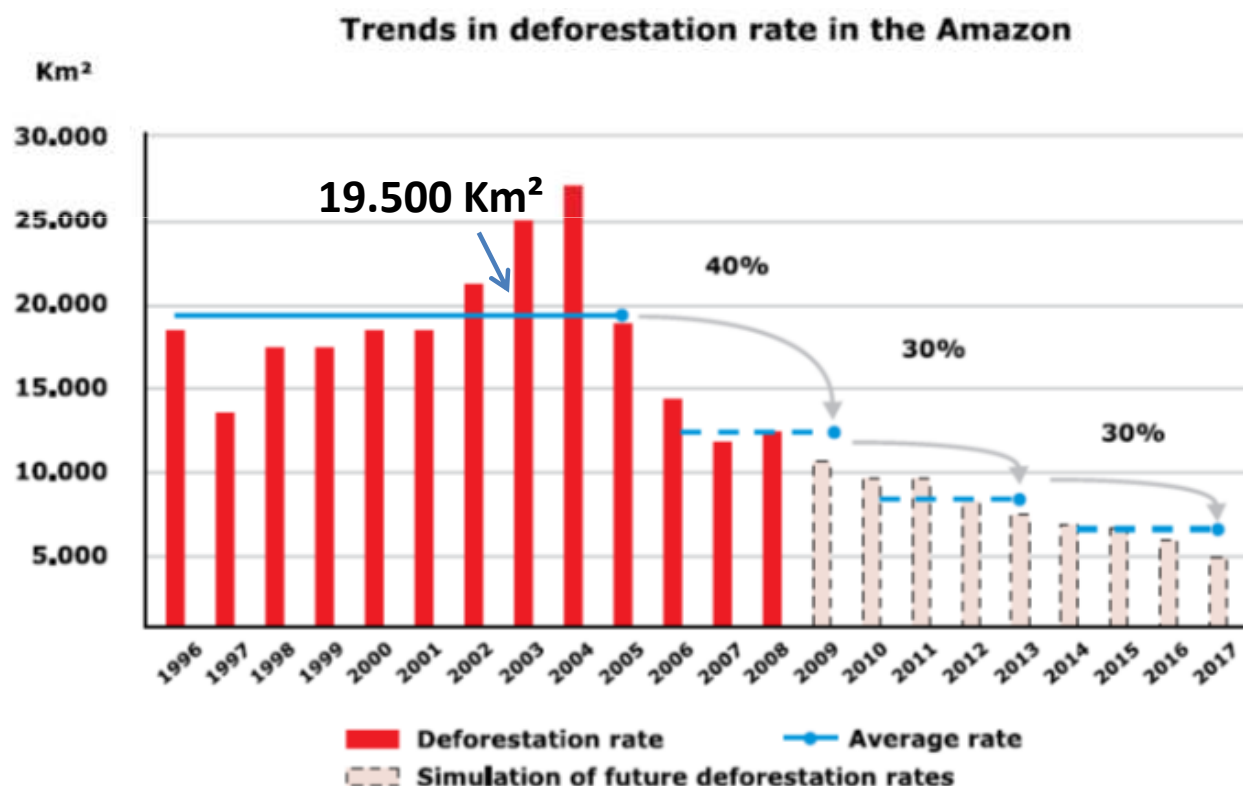
2001



# REDD in the Amazon/Opportunities

- National Action Plan to Prevent and Control Deforestation in the Amazon (**new phase, operating since 2004**)
- Amazon Fund, a voluntary-based mechanism that receives donations in order to compensate deforestation reduction and invest in prevention and control (**58 projects submitted, 5 approved**)
- National Plan on Climate Change – voluntary targets for emissions reduction from deforestation in the Amazon (**<80% up to 2020**)
- Amazon States start to develop State Plans to prevent and control Deforestation in the Amazon (**4 Major states = 85% forest Cover and represents 75% of the deforestation have already announced the state plans with targets and baselines analogue to NPCC** )
- National Target for emission reduction (**~40% by 2020 or 17% below 2005**)

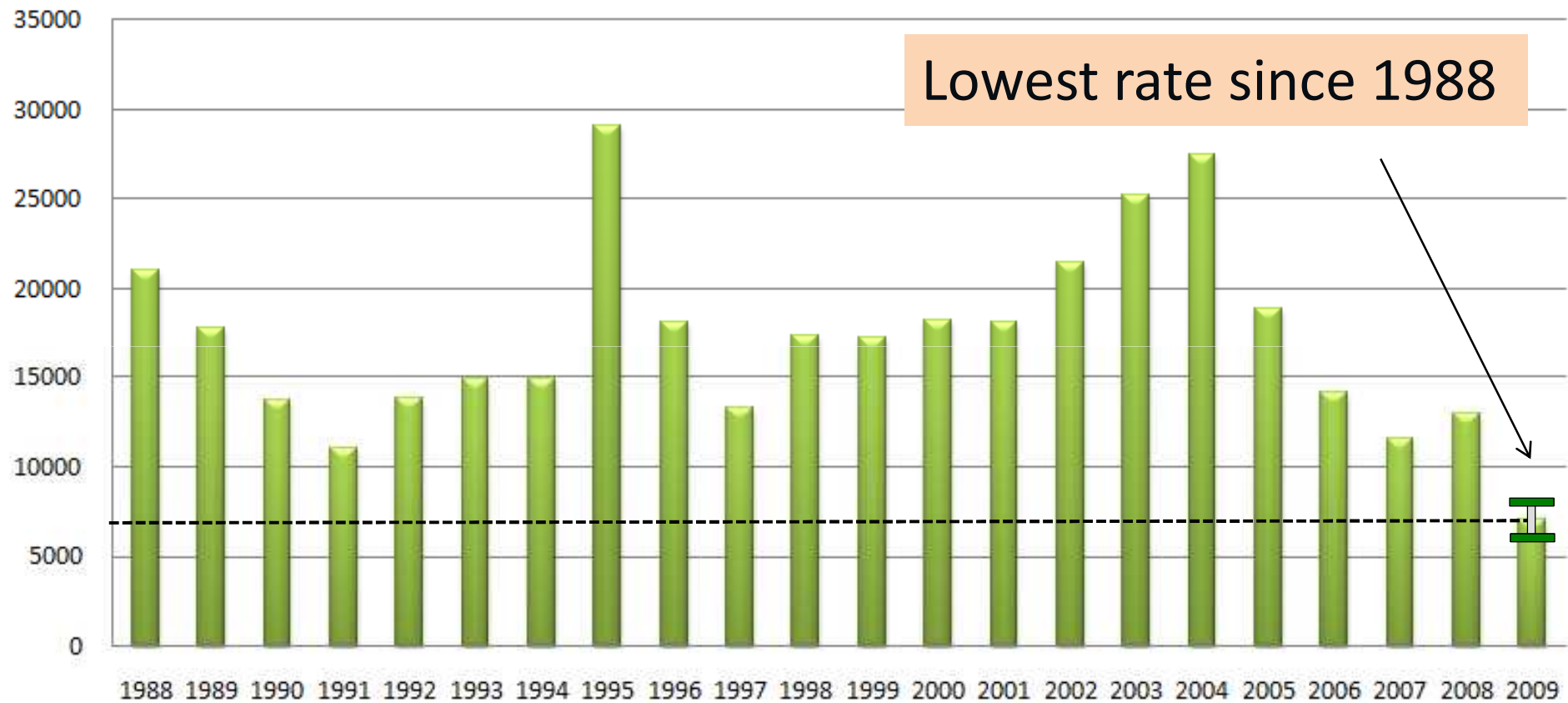
# BRAZILIAN NATIONAL PLAN ON CLIMATE CHANGE



Avoid emissions  
 ~ 4.8 billion tons of CO<sub>2</sub> between 2006 and 2020, considering a biomass carbon stock of 100 tC/ha.

Reduce deforestation by 80% by 2020

Deforestation Rates (km<sup>2</sup>) in Brazilian amazonia (1988-2009)



# The Amazon States

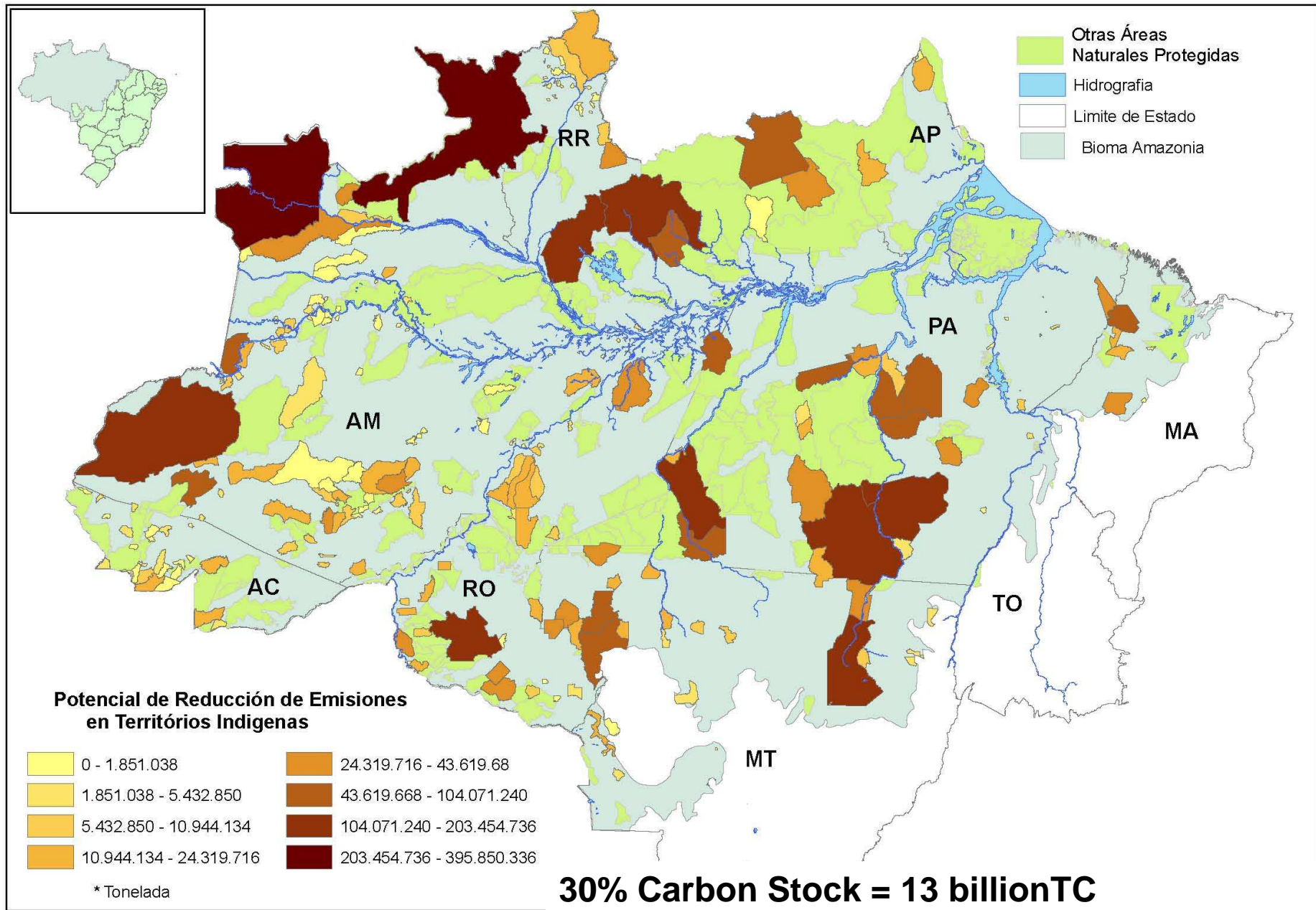


**How can a fair and equitable system for sharing financial benefits works from the national REDD mechanism to sub-national initiatives?**

# REDD in the Amazon

- Changing the driving forces of deforestation
- Identifying activities that contribute to the maintenance of standing forests
- Recognition of the rights to the lands, territories and resources which IPLC have traditionally owned or occupied





Source: Soares Filho, 2009, no published data

# REDD in the Amazon (REDD projects ?)

**NO Chicken-Pox REDD!**

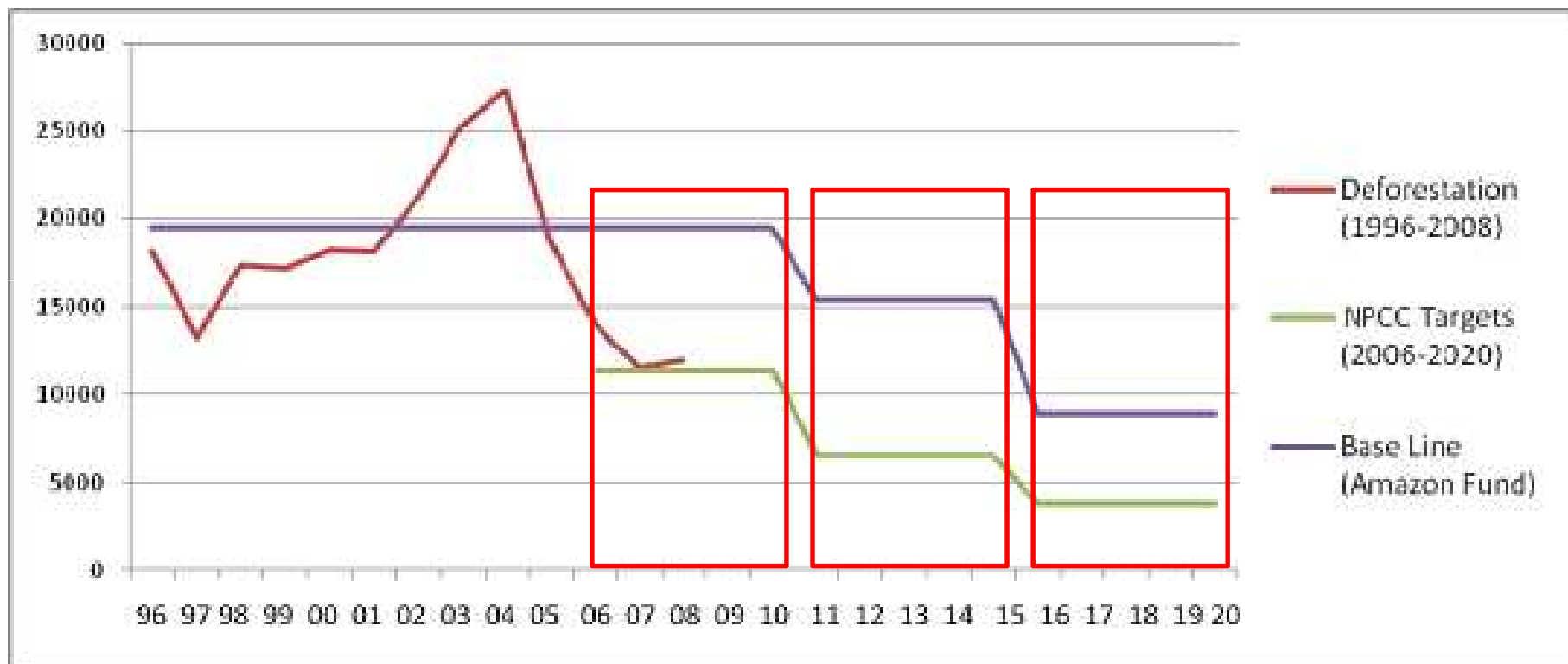
# Conecting subnational to national targets



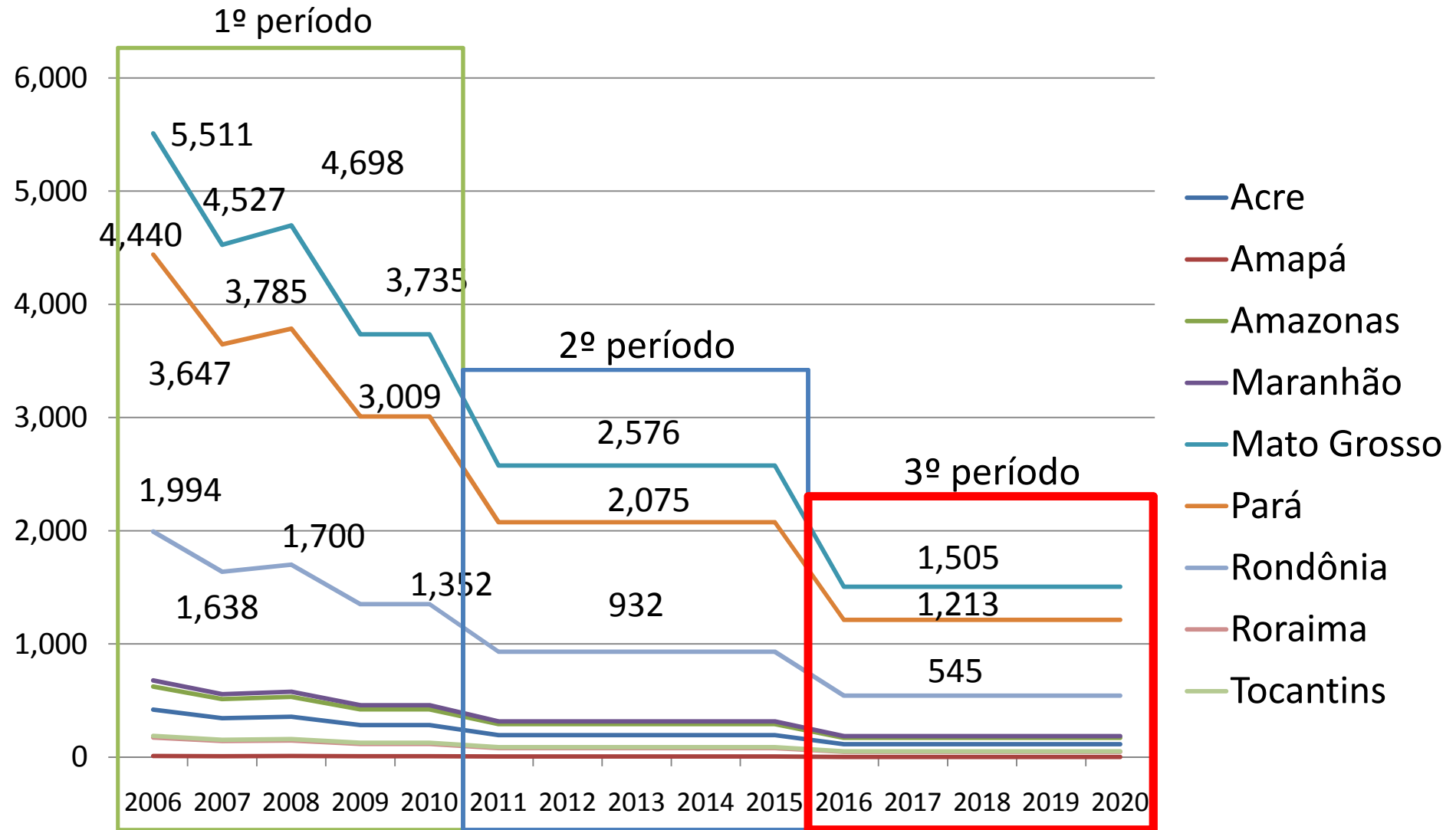
## Assumptions

- Amazon States should commit to deforestation reduction targets in **State deforestation Plan**.
- State targets must be consistent and integrated to the **National targets** proposed by NPCC
- If all **Amazon states adopt the same baseline method** and the same criteria for defining targets, NPCC will have full compliance with its target
- If all states reduce their deforestation below their respective target the country will have **additionality** in relation to the NPCC

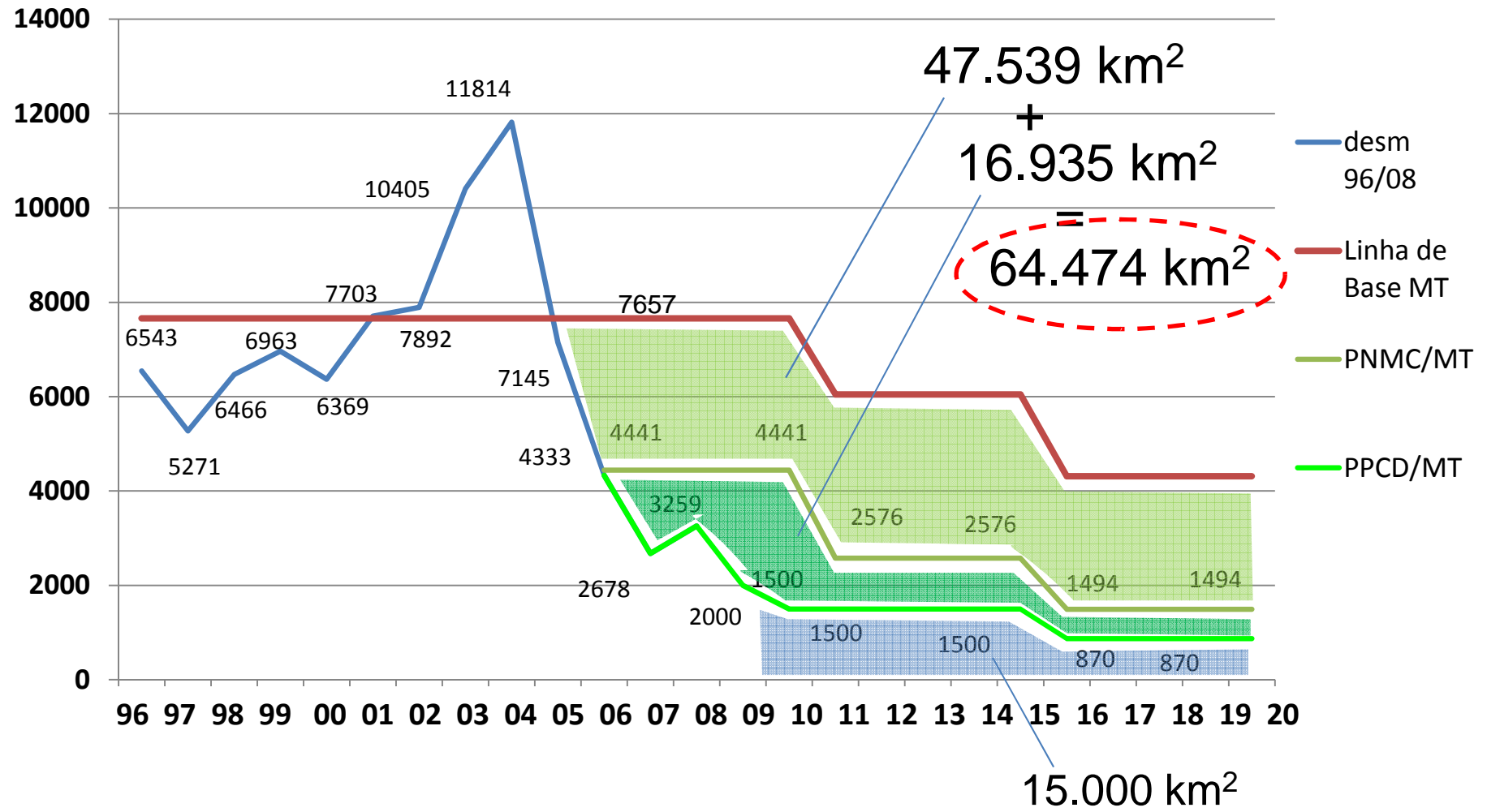
# Annual rates & NPCC targets



# Reduction Targets by Amazon States



# Mato Grosso State Targets (km<sup>2</sup>)



## Target, Stock and Emission Reduction

The achievement of **voluntary state target** coherent and integrated to the NPCC Targets

The **forest stock** and an estimated cost for the management of protected area in the region

The effective **deforestation reduction** and the opportunity cost of it.

## *National Plan on Climate Change And Deforestation Reduction*

**Table 1.** Deforestation emissions reduction verified between 2006 and 2008 considering the baseline established by the Amazon Fund\*

	2006	2007	2008	Total
Deforestation Reduction (km <sup>2</sup> )	5,461	7,968	7,532	20,961
CO <sub>2</sub> reduction (ton)	199,872,600	291,628,800	275,671,200	767,172,600

\* One hectare corresponds to 366 tCO<sub>2</sub>e (Amazon Fund value).



## Emission Reducton from 2006 to 2008

767 MtCO<sub>2</sub> = 100%

383,5 MtCO<sub>2</sub> = 50%

## Distribution of C-REDD Among States

40% Stock

30% Flow

30% Target

Emission Reduction from 2006 to 2008  
767 MtCO<sub>2</sub> = 100%

NPCC Reduction

C-REDD

Amazon Fund

Federal Government

PA

MT

AM

RO

AC

MA

TO

RR

AP

Project A

Project B

IL

CA

PP

STL

383,5 MtCO<sub>2</sub> = 50% (Projects and others REDD actions)

40% Stock  
30% Flow  
30% Target

230  
MtCO<sub>2</sub> =  
30%

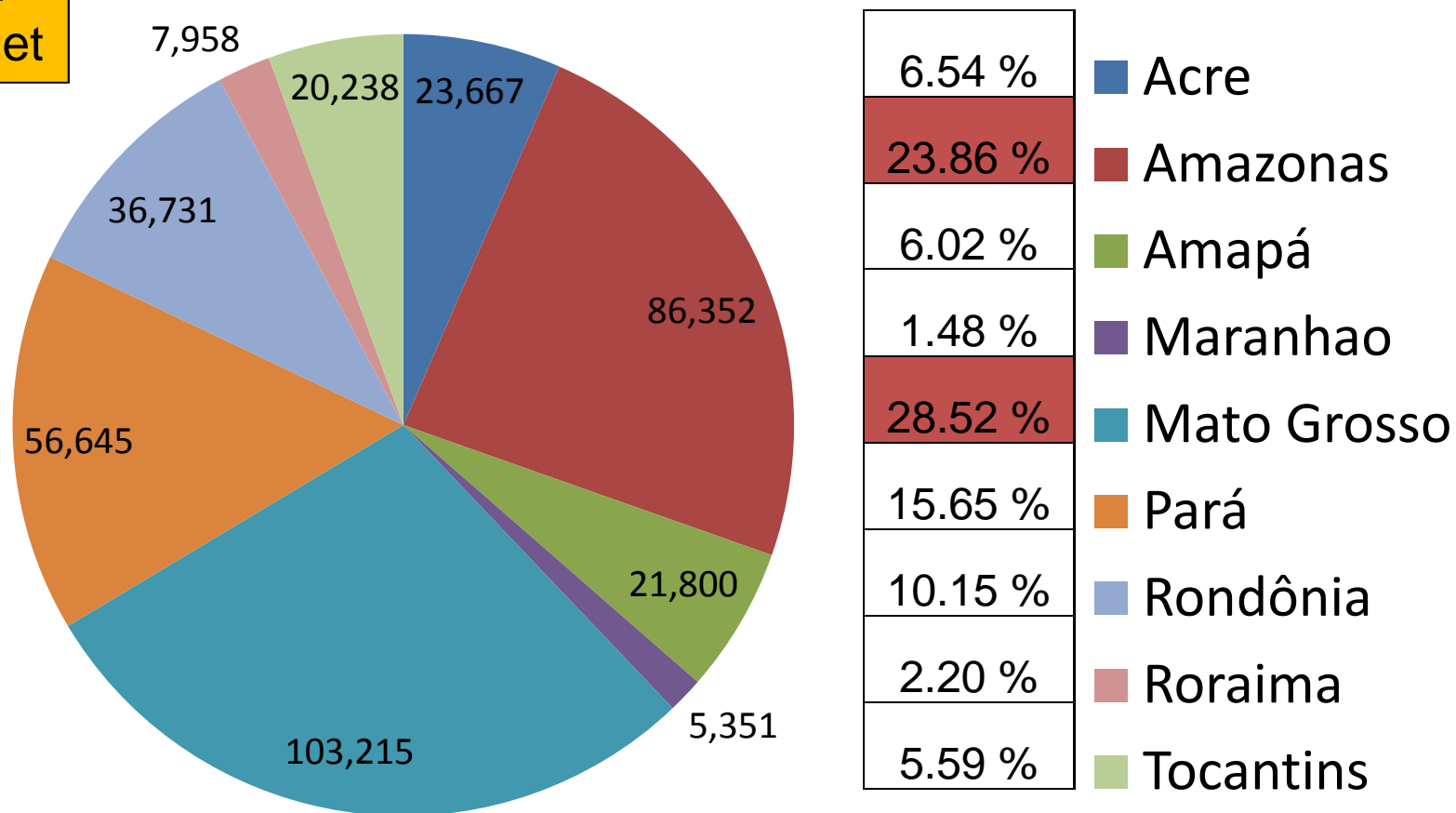
153,5  
MtCO<sub>2</sub> =  
20%



**383,5 MtCO2 = 50% (Projects and others REDD actions)**

40% Stock  
30% Flow  
30% Target

total 06/08 (C-REDD)



# REDD

**Scope:** What is being delivered?

**Reference Level:** How is it being measured?

**Distribution:** Where/to whom does the money go?

**Financing:** Where does the money come from?

Environmentally effective?

Economically efficient?

**Equitably distributed?**

**Politically feasible?**



IPAM - INSTITUTO DE PESQUISA  
AMBIENTAL DA AMAZÔNIA

Thank you!

[WWW.IPAM.ORG.BR](http://WWW.IPAM.ORG.BR)

**Paulo Moutinho**

[moutinho@ipam.org.br](mailto:moutinho@ipam.org.br)

**Instituto de Pesquisa Ambiental da Amazônia (IPAM)**