

# Developing the National REDD+ Strategy for Sudan

Dr. Patrick Van Laake

International Forestry Consultant

7 March 2012



# The National REDD+ Strategy

- The National REDD+ Strategy is necessary to build the National REDD+ Program of Sudan:
  - Describe the current situation of natural resources, socio-economic conditions of the rural population, governance aspects
  - Define priorities that the National REDD+ Program has to address
  - Identify modalities for implementation: activities, stakeholders, budget, time frame



# Developing the National REDD+ Strategy

- The National REDD+ Strategy will be developed over a period of up to 1 year or even longer
- It requires consultation with all relevant stakeholders:
  - Government agencies at national and state level
  - Academia
  - NGOs, civil society organizations
  - Local communities
  - Private sector
- After development it should be endorsed by the Government at the highest possible level



# Developing the National REDD+ Strategy

- The National REDD+ Strategy has to be inclusive of the interests of all relevant stakeholders, not only in its development but also in its priorities and implementation
  - All key land users need to be represented: forestry, agriculture, range, dams, transportation, mines
  - All legal and customary rights to land and use of water and forest resources need to be respected
  - Traditional rights and knowledge need to be respected
- The Strategy has to recognize other national priorities and commitments and seek for synergies where possible (e.g. UNCCD)



# Developing the National REDD+ Strategy

- The National REDD+ Strategy should encourage, foster, enhance, etc. secondary cross-cutting themes:
  - Poverty reduction, food security and sustainable rural development
  - Gender equality
  - Respect for the knowledge and rights of ethnic groups
  - Rational use of water resources
  - Combatting desertification



# Preliminaries for development

- In order to develop a proper strategy a careful analysis has to be made of the current situation and its history or causes:
  - **Natural resources base:** Mapping of land use and changes in land use over time
  - **Socio-economic situation:** National development priorities and policies. Long-term strategies
  - **Governance model:** How does governance work at the various levels in Sudan?
  - **Drivers of change:**
    - How do policies and economics impact land use?
    - What causes deforestation and forest degradation?

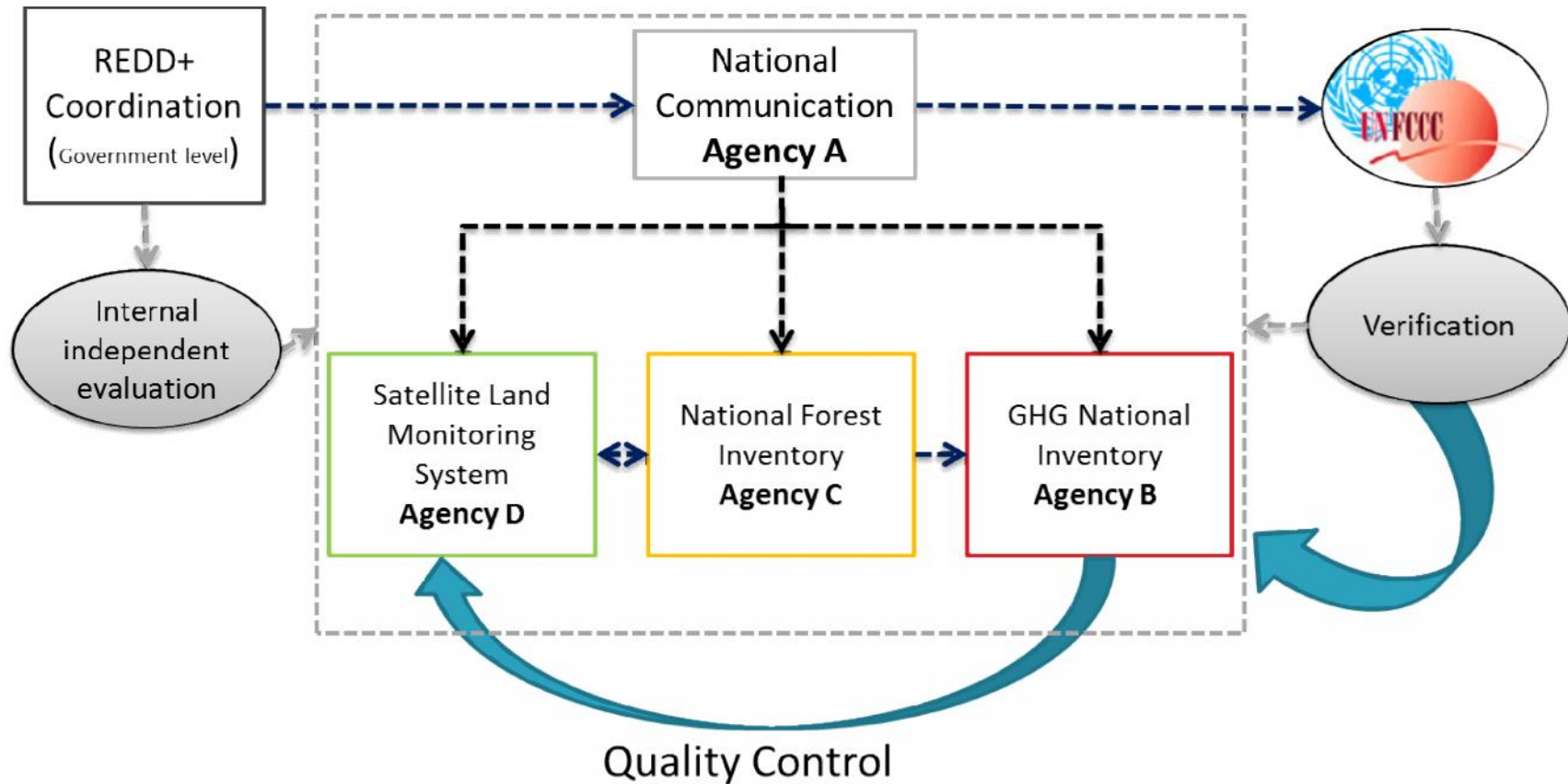


# Important elements of the Strategy

- Where is REDD+ going to be implemented?
  - On forest land
  - Other areas that could be forested (e.g. combatting desertification)
- How is it going to be implemented?
  - Which organizations have which mandates?
  - Relationship between central and state level
  - Role of local communities
  - Roles of academia, NGOs and private sector
- How are stakeholders compensated for their engagement?
  - Distribution of benefits
- And many more...



# Example of mandates - MRV



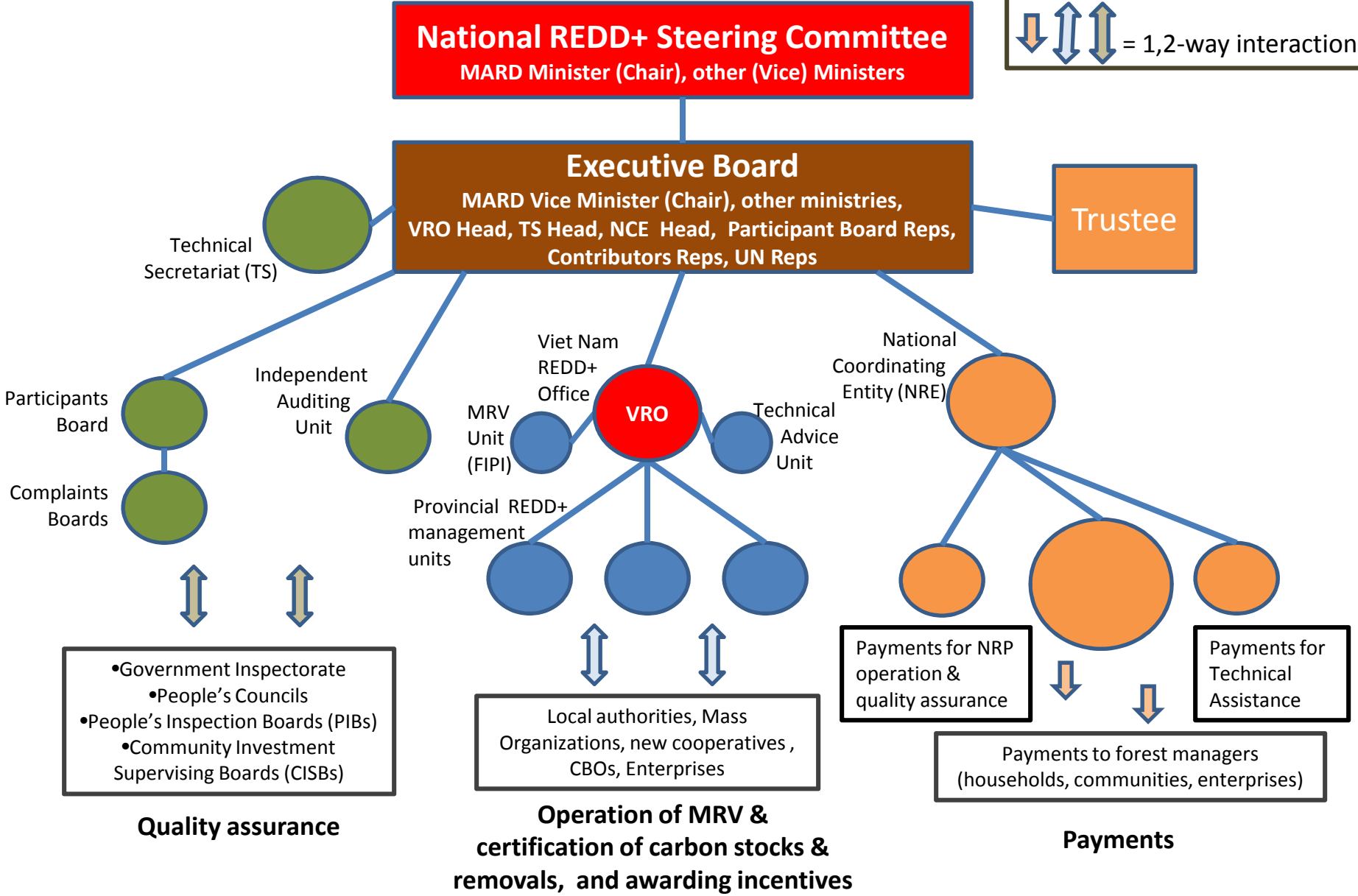


# Organigram National REDD+ Program (Full REDD+ Operation)

**Legend**

— = report, accountability

↕ = 1,2-way interaction



# Follow guidance

- UNFCCC documents should be followed as closely as possible, in particular that on *“Methodological guidance for activities relating to reducing emissions from deforestation and forest degradation and the role of conservation, sustainable management of forests and the enhancement of forest carbon stocks in developing countries”* (Decision 4/CP.15 and Decision 1/CP.16)



# From Strategy to Program

- Once the National REDD+ Strategy has been developed and endorsed it can be used to establish the National REDD+ Program
- The National REDD+ Program will implement the development priorities enumerated in the National REDD+ Strategy, using the modalities that are defined



# Key issues in developing the NRP

- The National REDD+ Program should aim to be contributing to the National Greenhouse Gas Inventory and contribute to the National Communications on Greenhouse Gas Emissions
  - Apply the National REDD+ Program on the Forest Land land-use category reported in the National Communications to the UNFCCC
  - Use IPCC Guidelines for the estimation of emissions and removals of GHGs from the forest

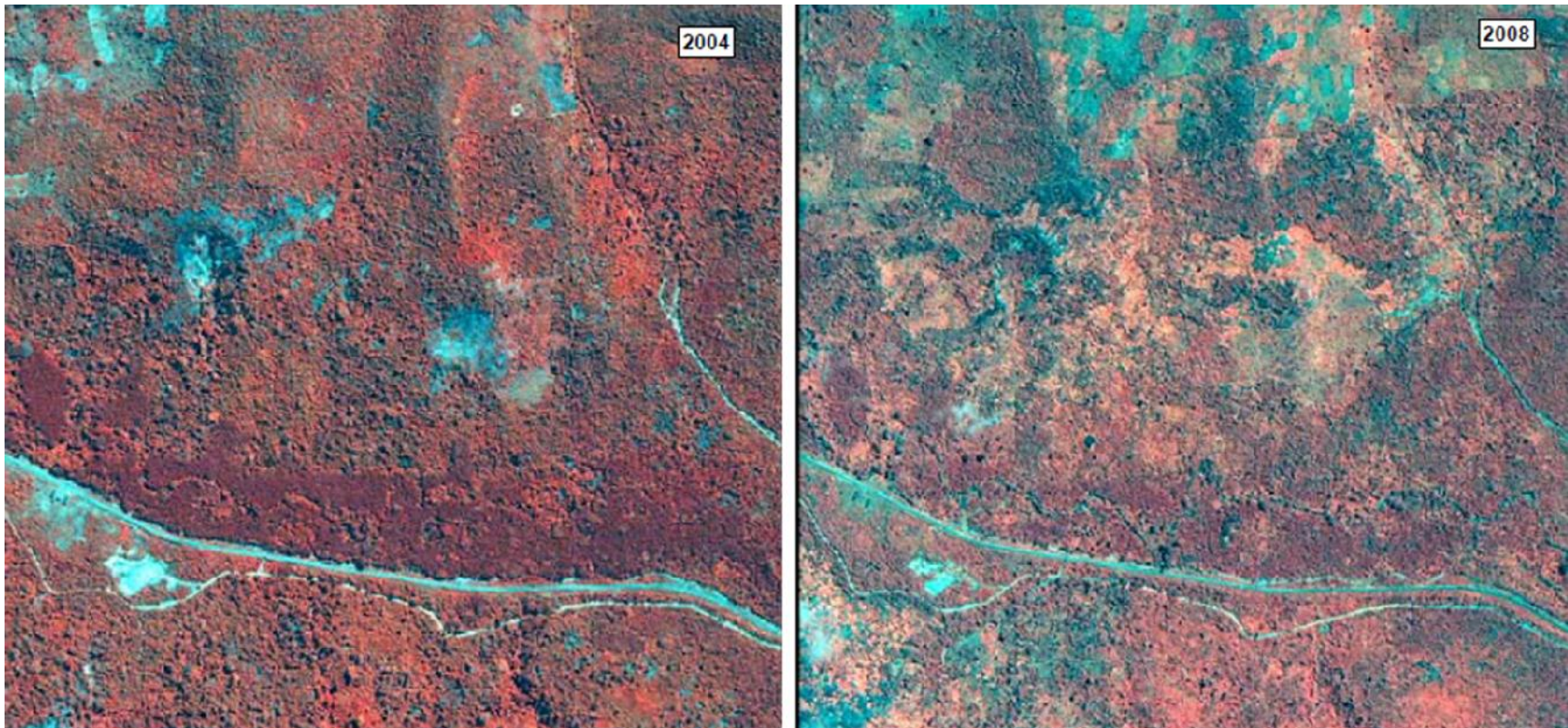


# Building capacity for the NRP

- The Strategy will identify many priorities and areas for which Sudan is currently lacking expertise
- A substantial effort in capacity building has to be made
  - Institutional capacities
  - Technical skills in staff



# Technical skills – Land use mapping



British Embassy



UNEP

# Technical skills – Land use mapping

