

Norwegian Land Resource Survey

Organizing a national monitoring centre: From data to information

Geir-H Strand, PhD
MRV and Monitoring for REDD+, Rome 1-3 March 2011

Norwegian Land Resource Survey

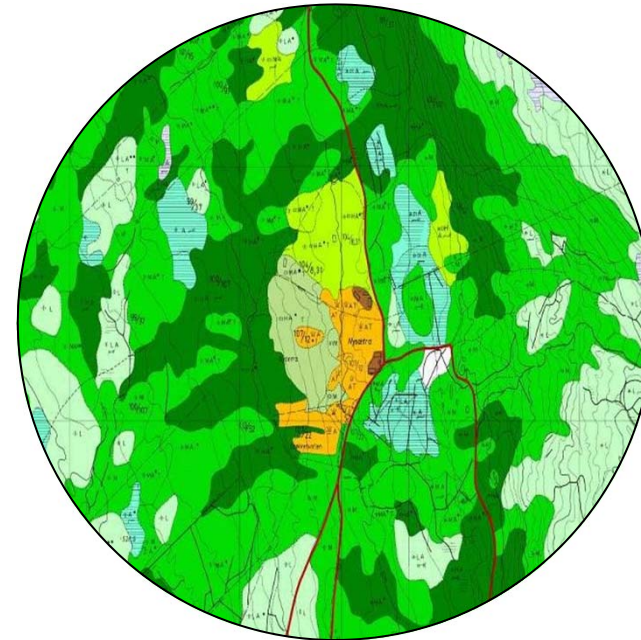


skog+
landskap

A responsibility of the
Norwegian Forest and Landscape Institute

Land resources:

- Land cover, land use
- Forest
- Agriculture
- Soils
- Landscape
- Pasture
- Outfields



Norwegian Land Resource Survey



skog+
landskap

**To supply decision makers
(public & private, national & international)
with information needed for decision making**



information



decision



Norwegian Land Resource Survey



skog+
landskap

... systematically,
using standardized methods, procedures and routines:
A (geographical) information system



Norwegian Land Resource Survey



skog+
landskap

Systems have three properties:

- a) A system has a purpose**
- b) A system operates routinely**
- c) A system is a group of components**

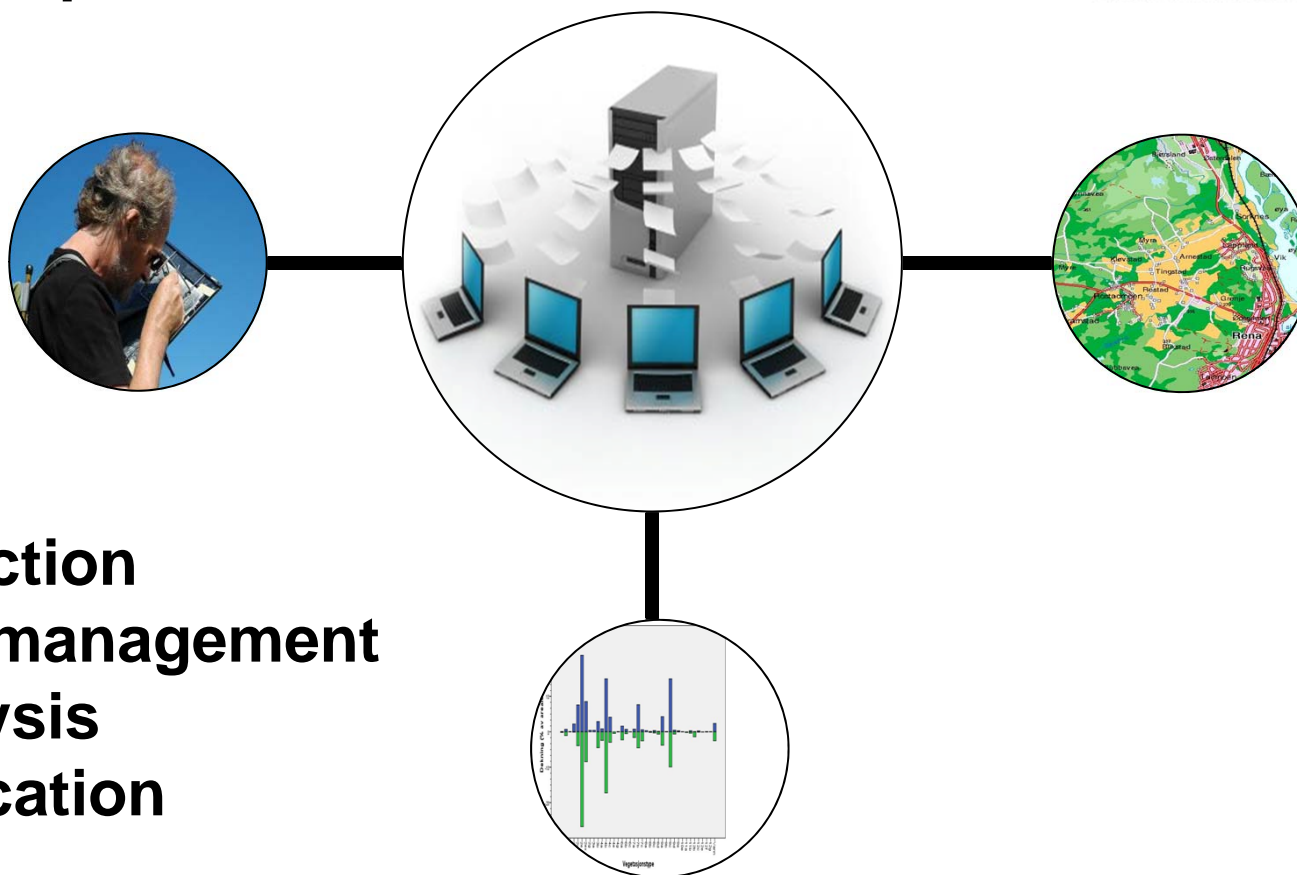


Norwegian Land Resource Survey



skog+
landskap

System components



Norwegian Land Resource Survey

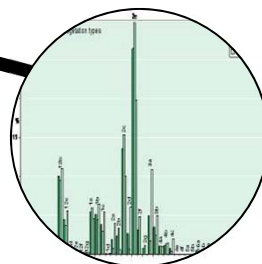


skog+
landskap

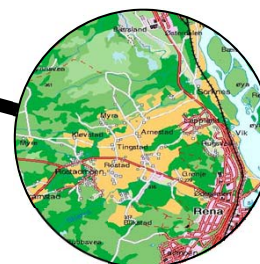
Collect



Analyse



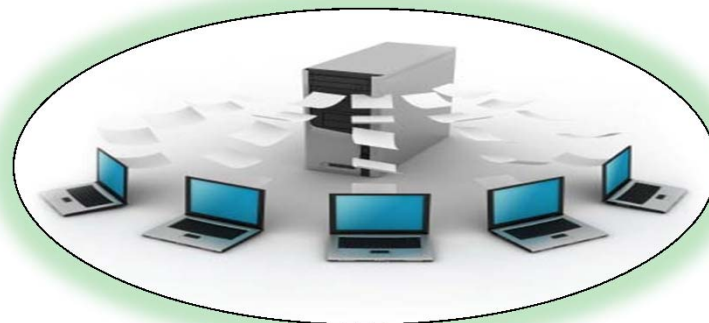
Communicate



Use



Archive



A chain of data production and dissemination
Database management is a core component

Norwegian Land Resource Survey



skog+
landskap

System design:

Level 1: The system (Purpose)

Level 2: Business processes

Level 3: Procedures (for each process)

Level 4: Steps (for each procedure)

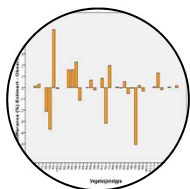
System design is a top-down process

Decide: “What” and “when” – leave “how” to the next level

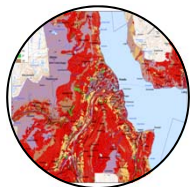
Norwegian Land Resource Survey



skog+
landskap



Clear and national role



Well-defined goals



Commitment (by authorities)



(Long term) continuity



Cooperation