



# UN-REDD Programme Social & Environmental Principles Approach – Social Principles Risk Assessment Tool



*Aki Kono*

*UN-REDD Regional Workshop*

*Bangkok, Thailand 8-12 November 2010*





# Rationale for the Social & Environmental Principles Approach

Responsibility to uphold UN conventions, declarations and policies:

- Human rights based approach
- UN Declaration on the Rights of Indigenous Peoples, ILO Convention 169
- UNFCCC, Convention on Biological Diversity  
...and many more...

Recognition that applying social and environmental principles will reinforce effectiveness of program interventions , overall 'readiness' , and emissions reduction potential

Build trust and demonstrate to stakeholders that UN-REDD Programmes respect these commitments

**UN-REDD**  
PROGRAMME

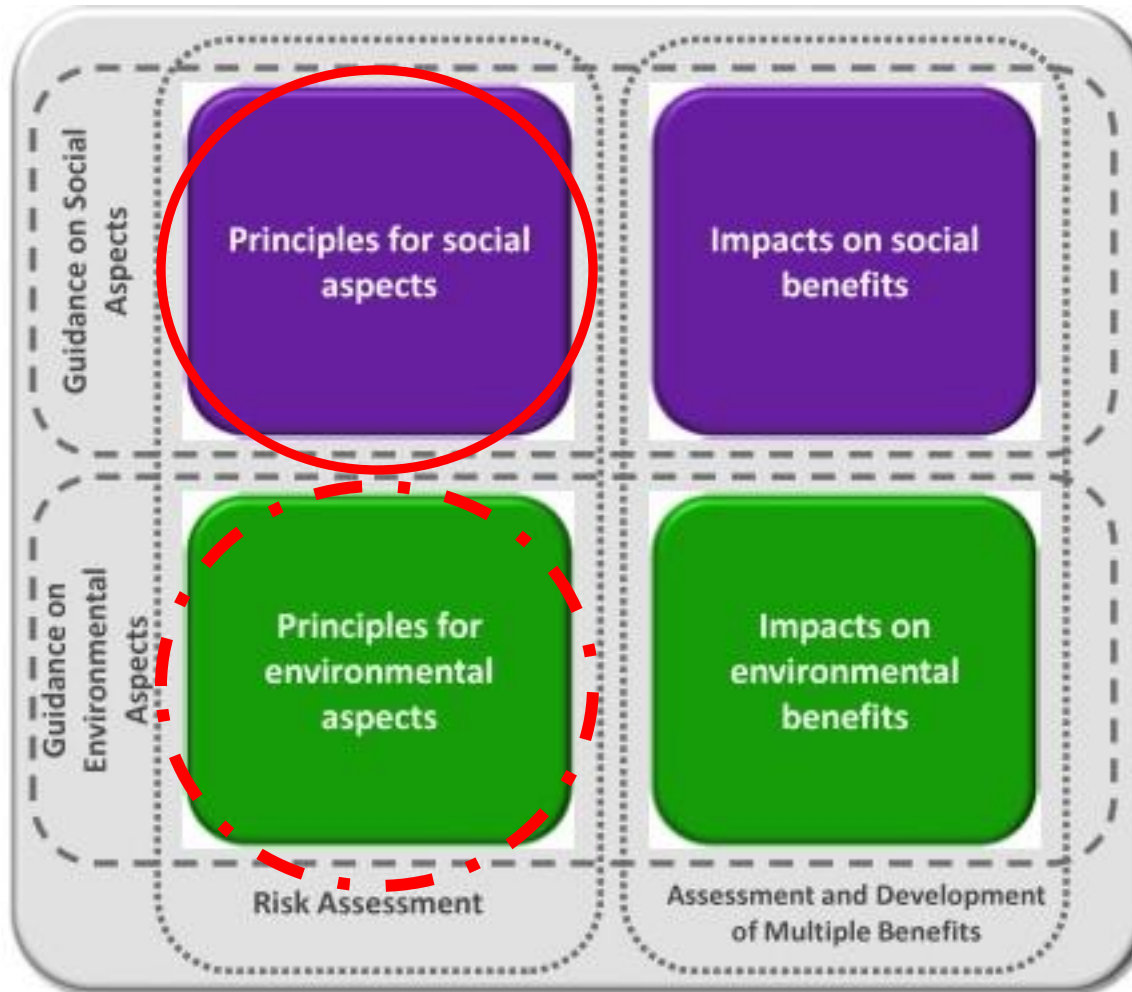


# Social & Environmental Governance

- **Social issues are broad:** inclusion, participation, financial benefit sharing, land tenure, recognition of indigenous knowledge and territorial planning practices, new community cartography approaches, fear of exclusion, poverty, tensions between people and logging companies, human rights abuses, etc.
- **Environmental issues are broad too:** “forests are more than Carbon”, plantations, biodiversity, water cycle roles, transformation of the forest sector (“step changes”), charcoal extraction, forest-farming tensions, protected areas, etc.
- Need to distinguish between **minimum standards** (risk management) and **co-benefits** (enhanced REDD mechanism, genuine forest transformation).

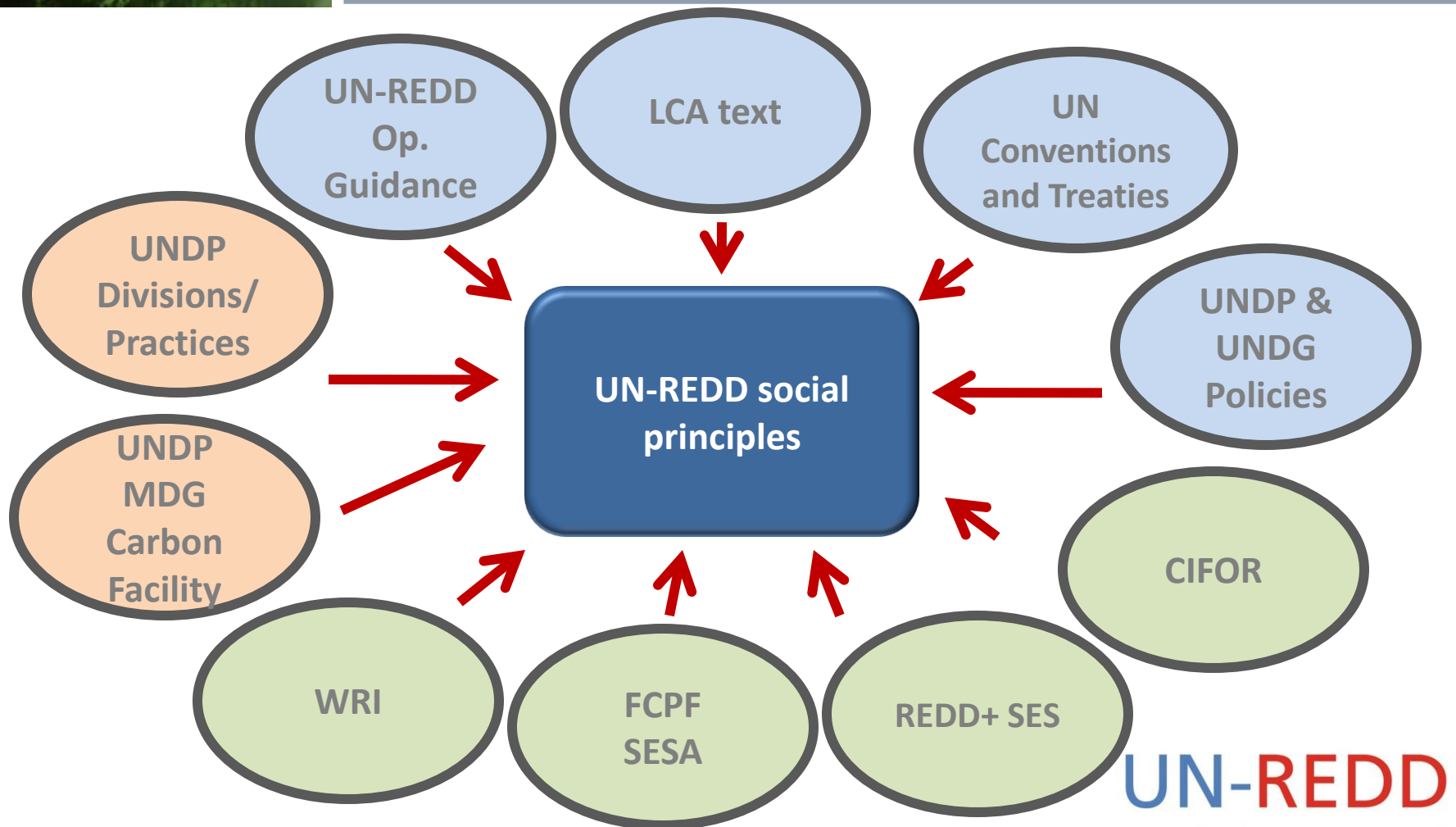


# Framework for Social & Environmental Principles Approach: Risk Assessment & Assessment of Positive Impact





# Inputs to UN REDD Social Principles Risk Assessment Tool



# Principles and Criteria for Social Aspects

Draft in progress

## Principle 1 – Good governance: The programme complies with standards of good governance.

**Criterion 1 – Integrity of Fiduciary and Fund Management Systems**

The programme has assessed and addressed corruption and fiduciary risks

**Criterion 2 – Transparency and Accountability**

Programme administration and REDD+ readiness activities are carried out in an accountable and transparent manner.

**Criterion 3 – Stakeholder participation**

a) All relevant stakeholders are identified and enabled to participate in a meaningful and effective manner; b) Special attention is given to most vulnerable groups and the free, prior and informed consent of indigenous peoples.

## Principle 2 – Stakeholder livelihoods: The programme assesses potential adverse impacts on stakeholders long-term livelihoods and mitigates effects where appropriate.

**Criterion 4 – Avoidance of involuntary resettlement**

The programme is not involved and not complicit in involuntary resettlement.

**Criterion 5 – Traditional Knowledge**

The programme is not involved and not complicit in alteration, damage or removal of any critical cultural heritage or the erosion of traditional knowledge. .

**Criterion 6 – Social and political well-being**

Social and political implications are assessed and adverse impacts on social and political structures mitigated. Benefits are shared equitably.

## Principle 3 – Policy coherence: The programme coheres with and complements sustainable development strategies and priorities, forestry plans and other relevant policies and treaties.

**Criterion 7 – Low-Emission, Climate Resilience Development Coherence**

The programme coheres with relevant strategies and policies at all levels of government.



# Risk Assessment Tool for Social Principles - Overview

## Objective of the Social Principles Risk Assessment & Mitigation Tool:

### **Improve program design and increase program's sustainability:**

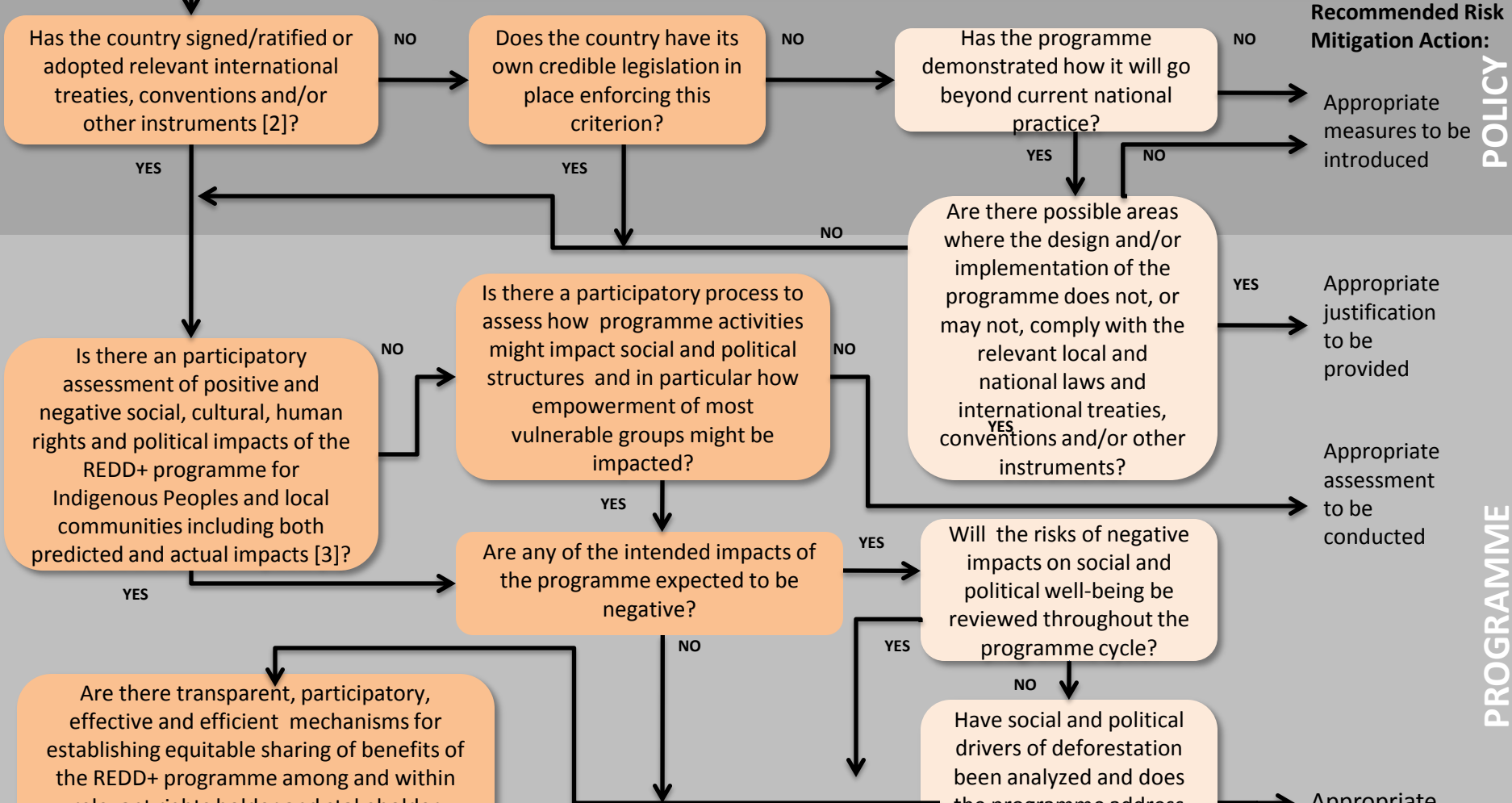
- Enabling program proponents to take social aspects into consideration early in the process and to design the program in a way that minimizes the risk of adverse impacts and include commensurate risk mitigation strategies where appropriate.
- Enabling stakeholders to verify compliance with social considerations and enhancing the program's long-term credibility and legitimacy.



Work in progress

# Social Principles Risk Assessment Tool – Example

**Criterion 6 – Social and political well-being:**  
Social and political implications are assessed and adverse impacts on social and political structures mitigated. Benefits are shared equitably. [1]

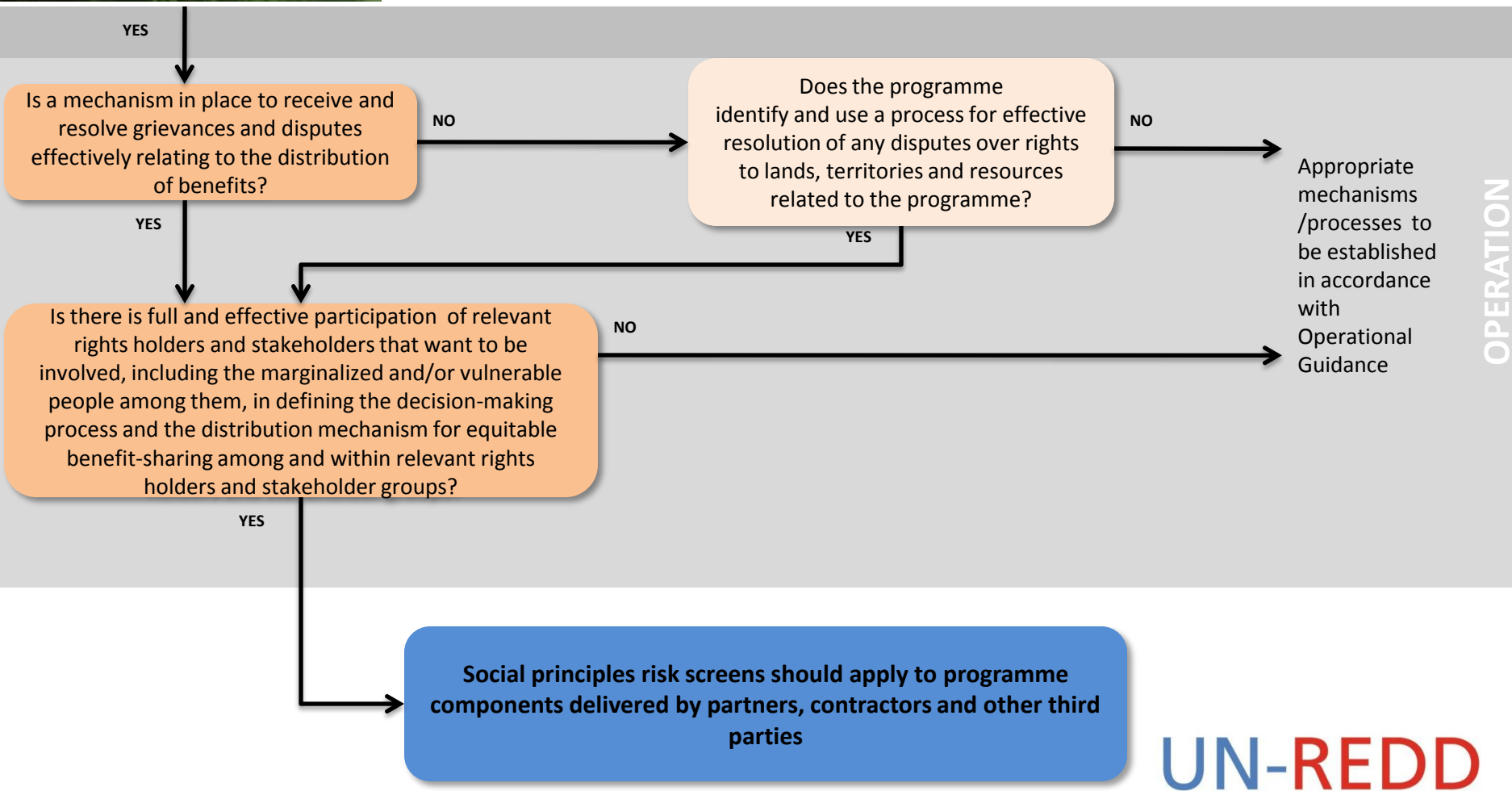






Work in progress

# Social Principles Risk Assessment Tool – Example – Cont.





# Next Steps

- Integrate environmental sta (Dec 2010-Jan 2011)
- Consult across UN-REDD partnership (Jan – Mar 2011)
- Coordinate with FCPF (Jan – Mar 2011)
- Pilot application of risk assessment and mitigation tool (March – June 2011)
- **We need a volunteer country in Asia-Pacific**
- Public comment period (Aug – Sept 2011)
- Role out Social & Environmental Principles Risk Assessment & Mitigation Tool and Sustainable Development Impact Assessment (End 2011)



## ...and the challenges

- **harmonisation with WB/FCPF safeguards' approach**
- **ensure it is practical and feasible (no overload)**
- **stakeholder recognition, appropriation and use**
- **organic approach: feedback, regular update**



***Thank You!***