

The UN-REDD Programme

Asia/Pacific Knowledge Management Action Plan, 2015

Regional Knowledge Exchange on National Strategies/Action Plans

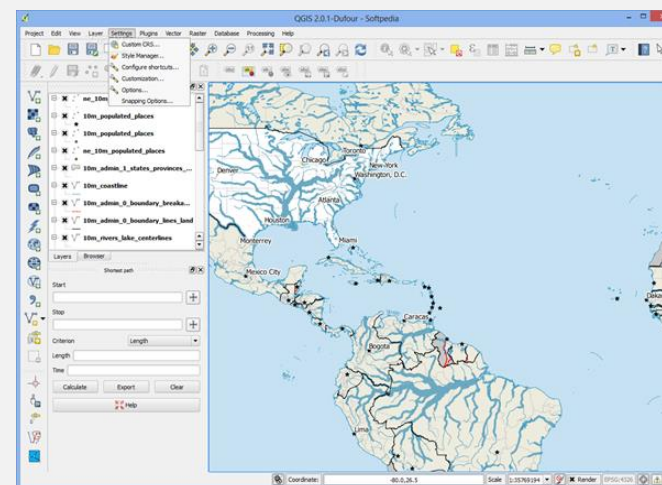
Bangkok, 29-31 July 2015

**Day 1, Session 3: Approaches to Spatial
Planning**



What is the role of spatial analysis in planning?

- Spatial analysis is much more than map-making.
- Making a map is not taking a decision!
- Technical input to a decision-making process (planning) which is also political



How is spatial analysis and planning relevant for REDD+?

Spatial analysis can support efficient REDD+ planning that enhances **benefits**, reduces **risks** and minimizes **costs**

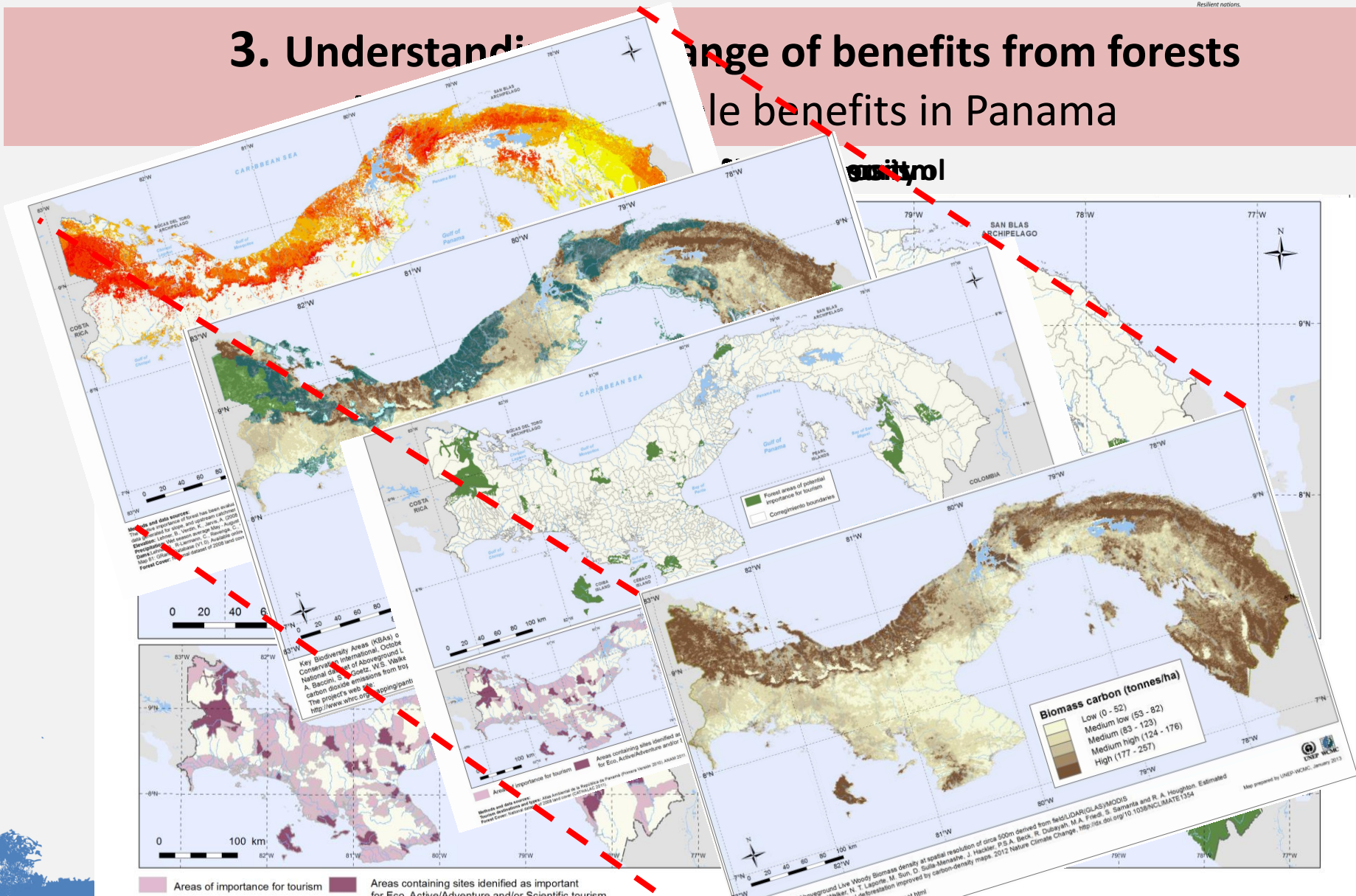
Examples of relevant spatial data

Examples of spatial analysis for REDD+ planning:

1. Understanding the range of benefits from forests and their distribution
2. Prioritizing areas for REDD+ implementation
3. Identifying areas for a given REDD+ action

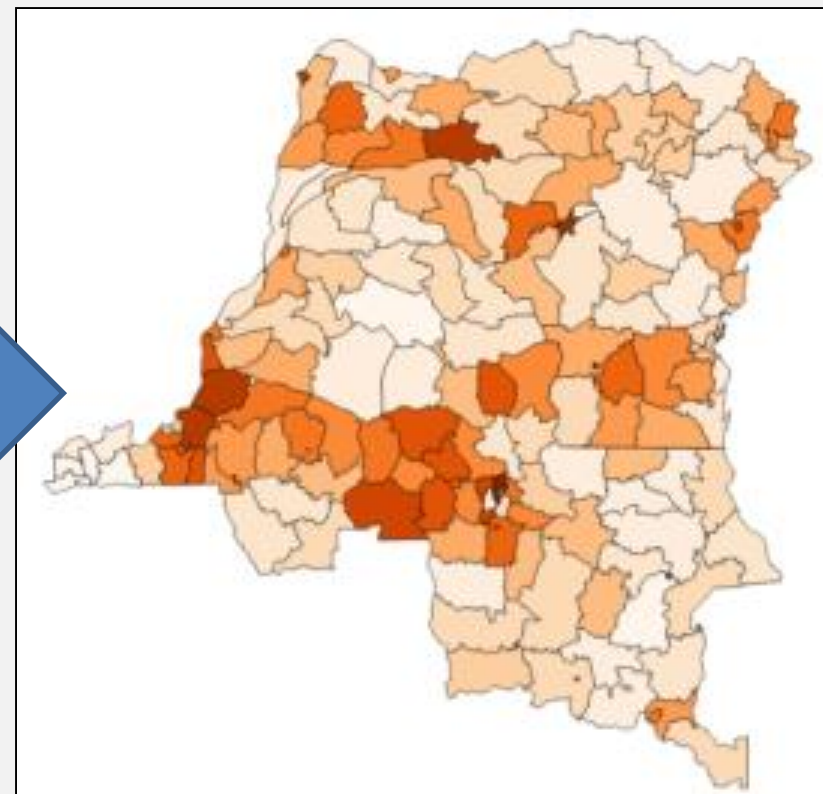
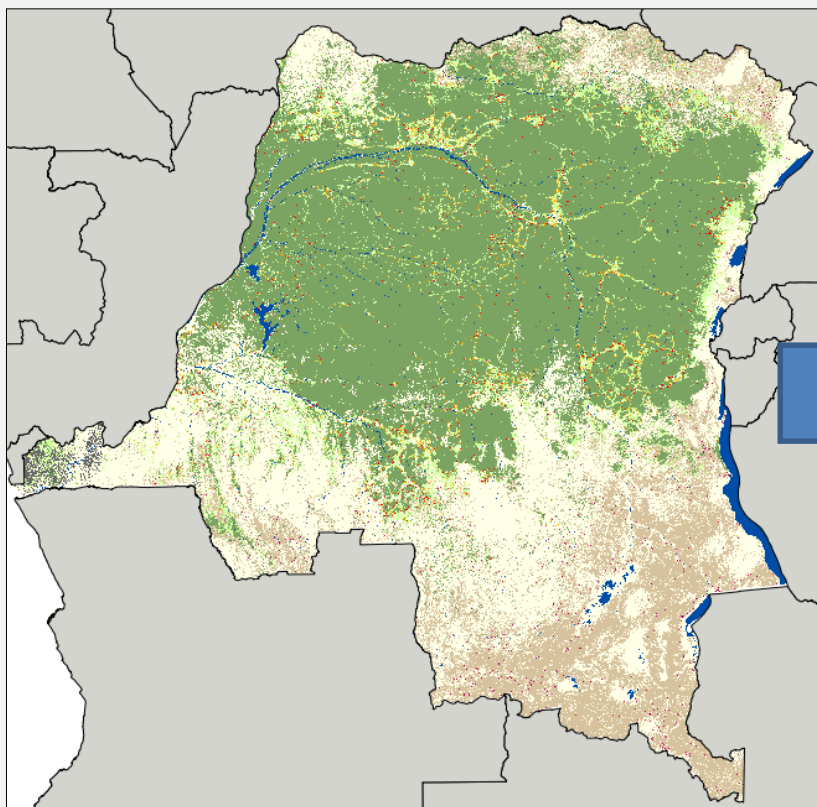


3. Understanding the range of benefits from forests and the multiple benefits in Panama



1. Prioritizing areas for REDD+ implementation

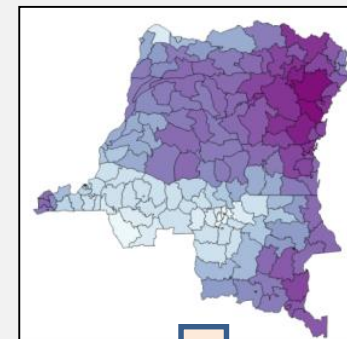
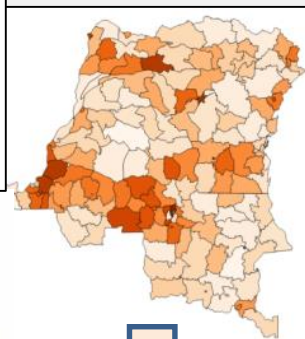
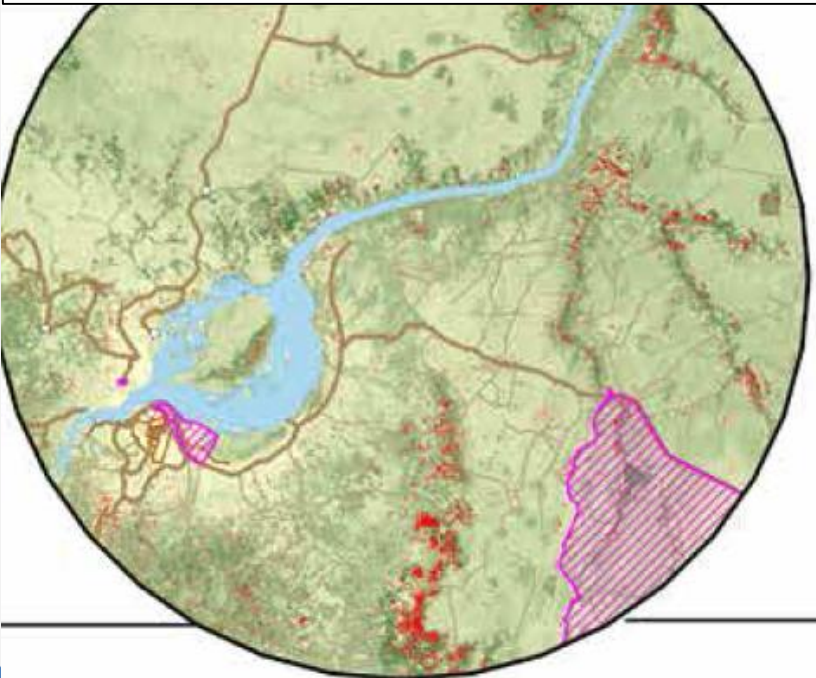
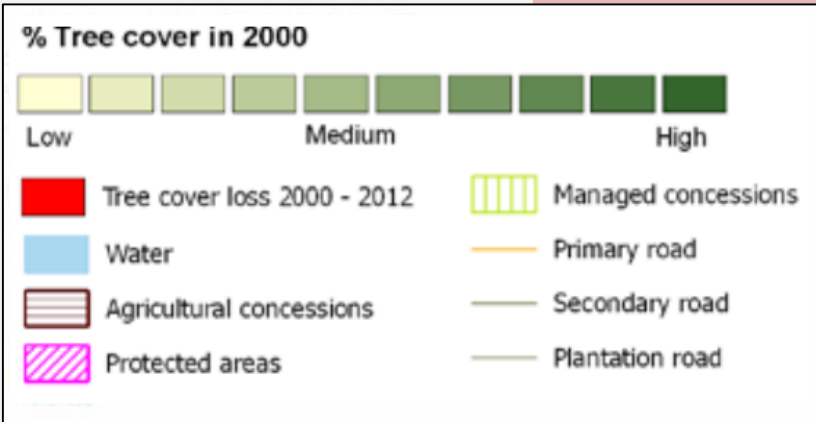
Planning of REDD+ investments in the DRC



Forest cover loss 2000-2010 (Source: OSFAC)

1. Prioritizing areas for REDD+ implementation

Planning of REDD+ implementations in the DRC

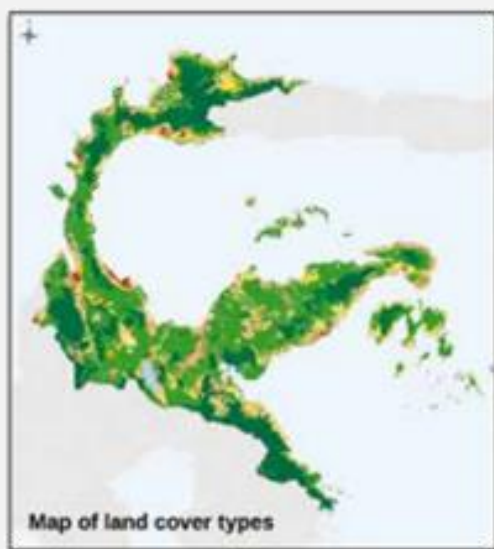


Concessions	Bénéfices additionnels	
	Biodiversité	Services écosystémiques
Mean deforestation rate 2000-2010	Importance index for protected species	Index of importance for soil erosion
4.25%	0.00	0.61
3.46%	0.00	0.00
1.88%	0.02	0.17
1.60%	0.05	0.00
1.19%	0.10	0.00
1.15%	0.06	0.00
1.14%	0.01	0.00

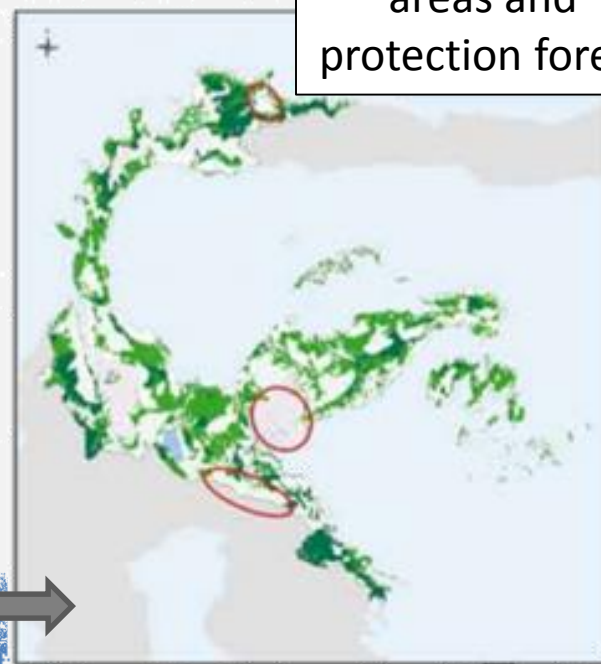
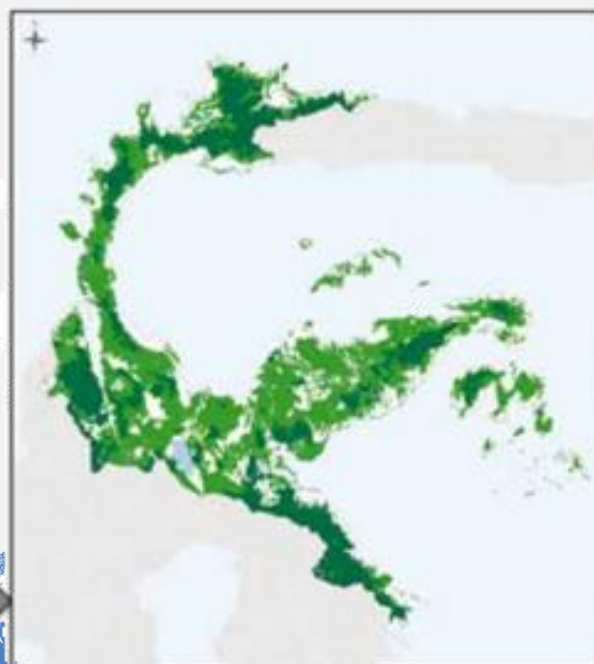
Kwamouth	15.11
Zongo	111.33

2. Identifying areas for a given REDD+ action

Potential areas for the sustainable management of forests
Central Sulawesi Province, Indonesia



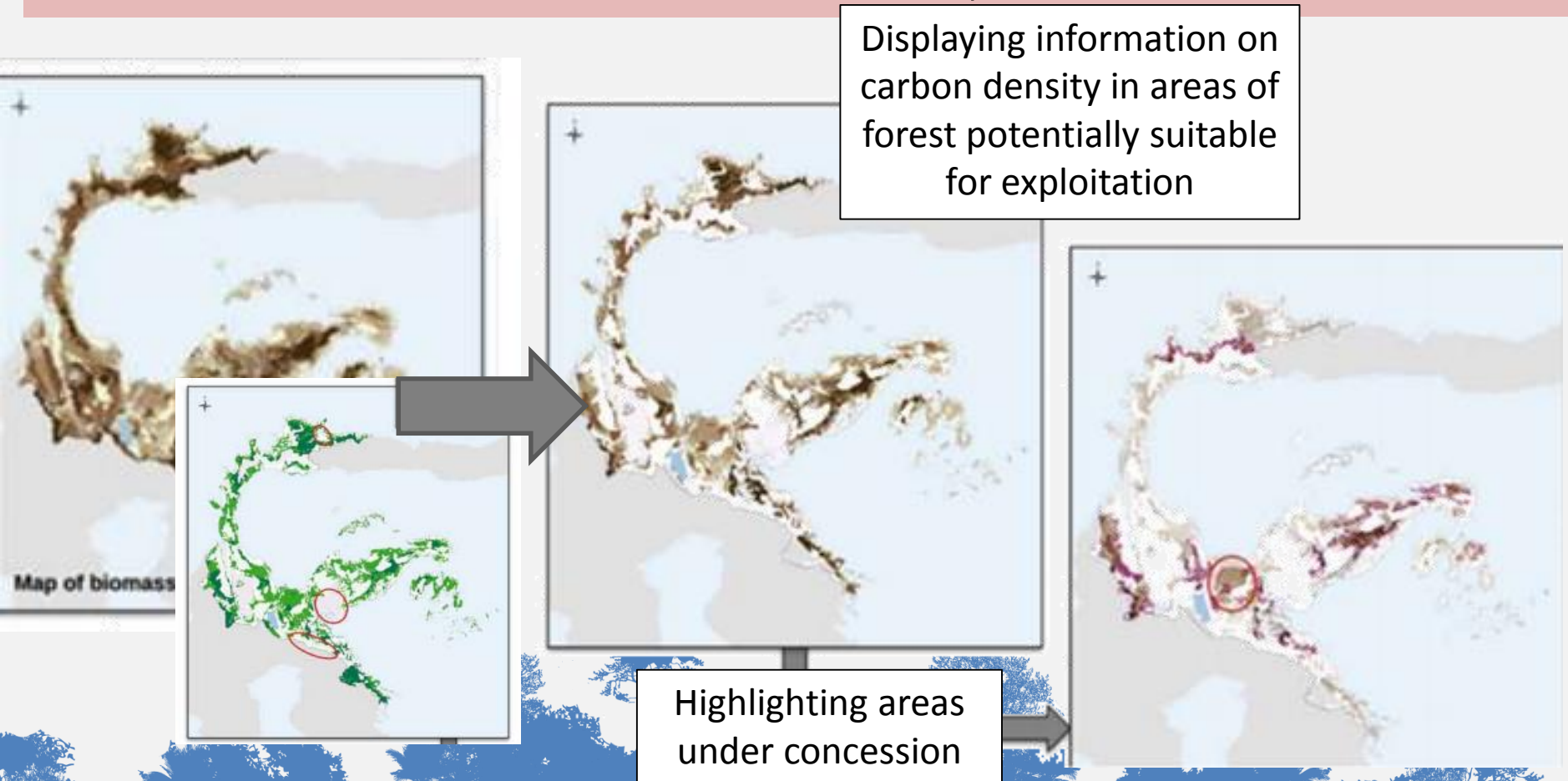
Masking out
non-forest
cover types

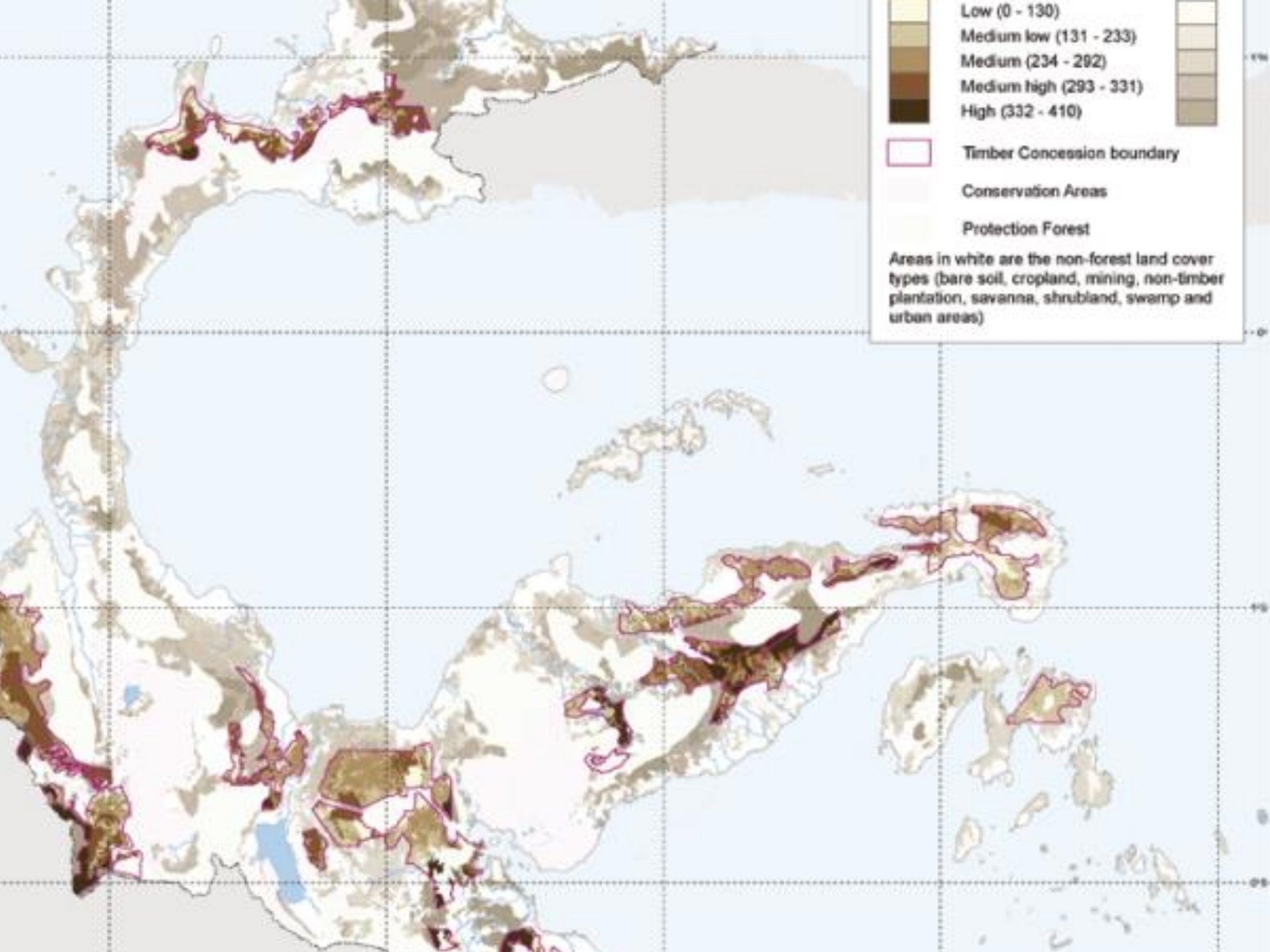


Masking out
conservation
areas and
protection forest

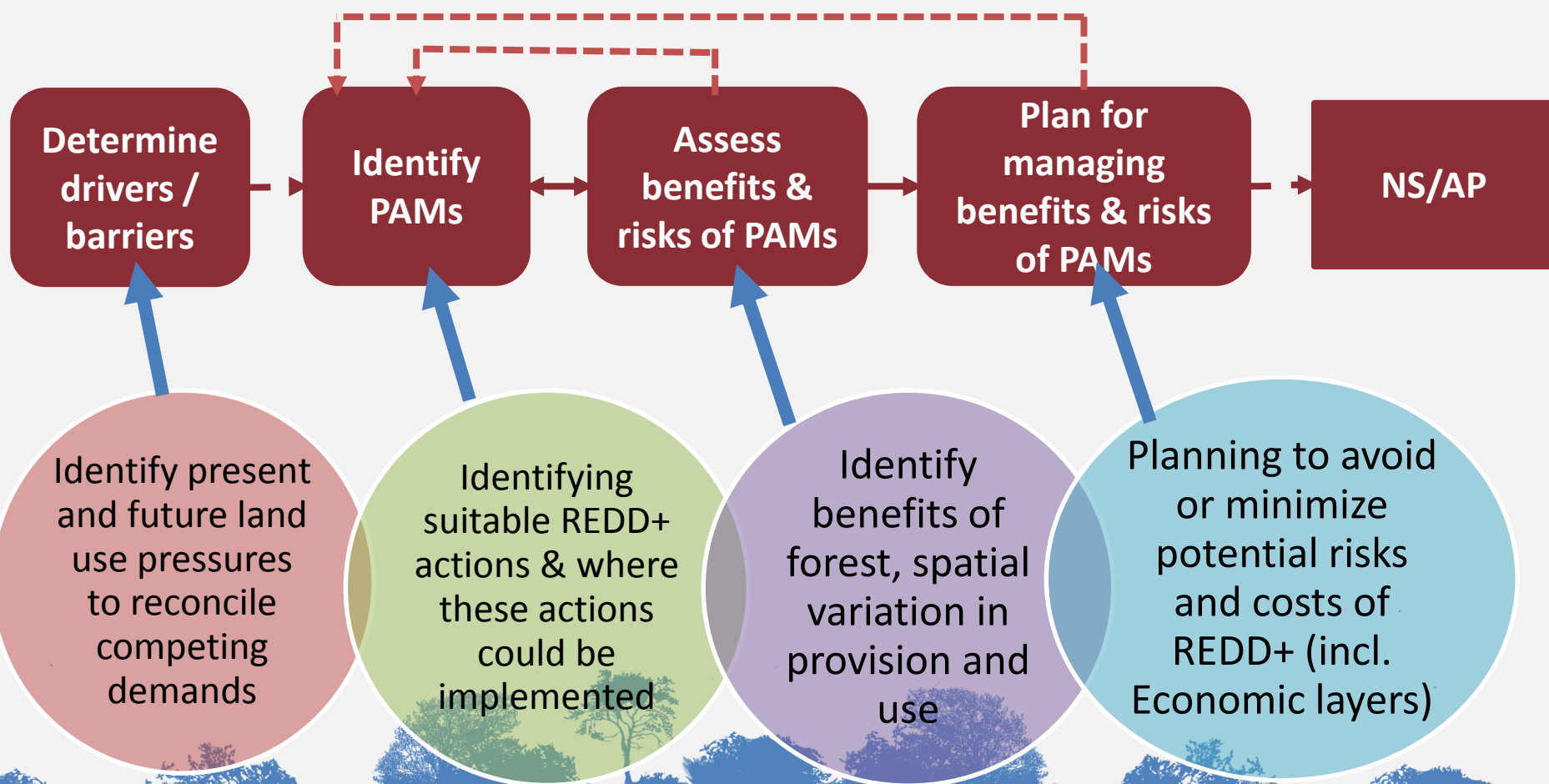
2. Identifying areas for a given REDD+ action

Potential areas for the sustainable management of forests
Central Sulawesi Province, Indonesia





Spatial Planning and the Development of a National REDD+ Strategy



Thank You

Blaise Bodin

Blaise.Bodin@unep-wcmc.org



**United Nations Environment Programme
World Conservation Monitoring Centre**

Cambridge, UK



