

# REL IN REDD

(Reference Emission Level *in* Reducing Emission from Deforestation and Forest Degradation)



**Wandojo Siswanto**

*Staf Ahli Menteri Kehutanan Bidang Kemitraan*

E-mail: [wandojos@yahoo.co.id](mailto:wandojos@yahoo.co.id)

# 1. INTRODUCTION

- The production of a REDD carbon credit requires implementation of a system consisting of a series of steps. This system is referred to as a REDD carbon credit supply chain (IFCA Study, 2008).
- Four elements of the REDD carbon credit supply chain:
  - A. Development of an organizational infrastructure
  - B. Identification of organizations to achieve emission reduction
  - C. Development of a carbon market system
  - D. Forest governance to ensure law enforcement

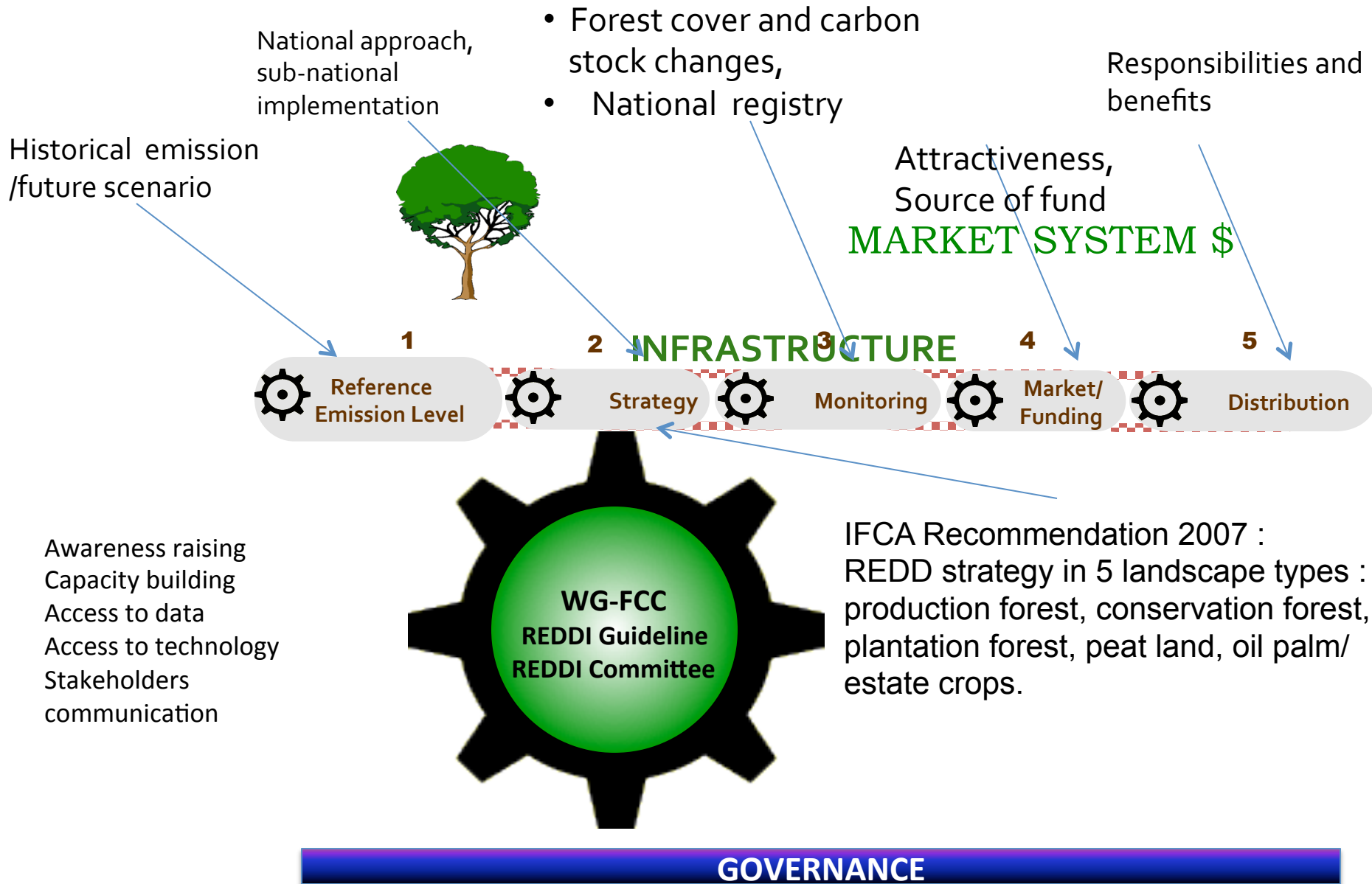
The relationship among elements is illustrated in FIGURE 1.

**A. The organizational infrastructure should be capable of:**

- 1. Set a baseline/reference emission level (REL)**
- 2. Set a strategy to reduce deforestation/degradation**
- 3. Monitor the changes**
- 4. Management of the sale of carbon credits**
- 5. Distribute income from carbon credits**

**The relationship among elements is illustrated in FIGURE 1.**

# Relationship among four elements of REDD



## 2. REFERENCE EMISSION LEVEL (REL)

- REL is the first component in the organizational infrastructure
- The SB 28 decision (ref) describes Reference Emissions Levels (REL) as follows:

*“Means to establish reference emission levels, based on **historical data**, taking into account, inter-alia, **trends, starting dates and the length of the reference period, availability and reliability of historical data, and other specific national circumstances.**”*

## **A REL/BASELINE (IFCA Study, 2008):**

- A projection of emissions from deforestation and forest degradation
- A reference for measuring reductions in emissions from deforestation and forest degradation

## **SCALE OF REL:**

- **Local** - individual project/sub national
  - » Leakage ?
- **National** - whole country
  - » Leakage ?
- **Global** - several countries in the system
  - » Leakage ?

### **3. CHALLENGES/ISSUES related to the draft of Permenhut REL:**

- What approach to establish REL
- Do we need to set REL at National, Sub-national and Project Levels? By whom? What is the mechanism?
- How to deal with leakage
- Data availability, uncertainty



## 4. POLICIES in REDD implementation

- Regional Autonomy/Decentralization
- Sustainable forest management
- Participation of people around the forests
- Stakeholders Involvement
- pro job, pro poor, pro growth

**THANK YOU**



**Ministry of Forestry  
of the Republic of Indonesia**