

Governance for REDD – Planned Work

Estelle Fach

1 February 2010

UN-REDD programme Scope of Work

“Towards an MRV for Governance”

- Good governance central to success of REDD policies and measures
 - Predictable and lasting delivery of emission reductions
 - Minimize negative social impact
 - Promotes sustainable development and livelihoods
 - May be required by countries that allow REDD credits into their domestic response to climate change
- “MRV for Governance” part of an overall MRV for REDD
- REDD governance baseline and progress : indicators

UNFCCC REDD LCA Text

Safeguards on Governance

2.Safeguards to be [promoted] [and] [supported]:

a) Transparent and effective national forest governance structures, taking into account national legislation and sovereignty

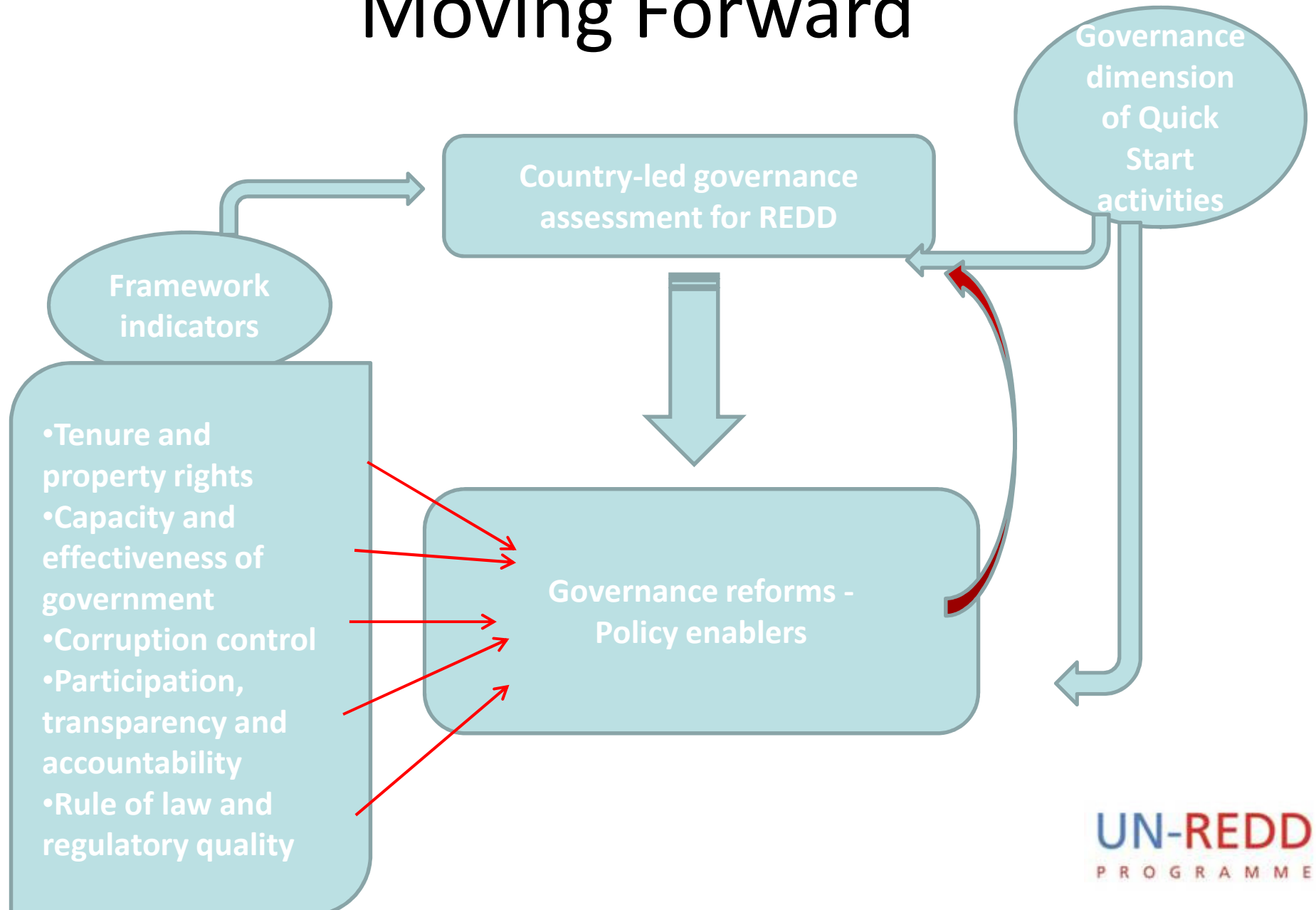
c) Full and effective participation of relevant stakeholders, including in particular indigenous peoples and local communities

..

Requests that a developing country Party aiming to undertake activities referred to in paragraph 3....develop:

- [A robust and transparent national forest monitoring system for the monitoring and reporting of the activities referred to in paragraph 3 above [, and the safeguards referred to in paragraph 2 above]....]

Moving Forward



Country-led Governance Assessments for REDD+

- Oslo Governance Centre
- Principles:
 - Country-led : global standards and local ownership
 - Inclusiveness and participation : explicit focus on marginalized and vulnerable groups (poor, women, IPs)
 - Capacity building
 - Alignment with national plans
 - Framework of indicators adaptable to national context
- Objectives
 - Provide accurate (comparable) & transparent information
 - Fuel evidence-based policy making
 - Inform transition to phases of readiness
 - Accountability mechanisms for non-state actors

Finding our niche

- Focus on forest sector governance
- Focus on measuring – reporting and verification more controversial
- External vs country-led assessments and independent monitoring
- In-country implementation
- Creating demand

Next steps

- Your input
- P4 in Oslo
- Country-led assessments rolling out in 2010
- Mapping out potential for collaboration
 - FAO's Forest Resources Assessment
 - REDD + Social and Environmental Standards (CCBA/CARE) : Ecuador, Tanzania
 - WRI's Governance of Forests Indicators : Indonesia
 - Global Witness's Forest Transparency Report Card : Liberia, possibly Guyana, Ecuador, DRC
 - Transparency International's Forest Corruption Monitoring Tool : Indonesia, Papua New Guinea, Solomon Islands
 - World Bank's Analytical Framework for Governance Reforms

Country-led Governance Assessments for REDD +

