



# PARAGUAY

## PROGRAMA NACIONAL CONJUNTO

# Background

- In order to implement REDD the establishment of a National Forest Monitoring System (NFMS) is needed
- Paraguay is giving a first important step toward the implementation of NFMS thanks to the targeted additional support received earlier this year

# PROCESS

- Open source tools developed by FAO and the Brazilian National Institute for Space Research (INPE) are been used.
- The three main partners of Paraguay's UN-REDD+ Program: INFONA, SEAM and FAPI worked together.

- With the support of FAO's experts capacity building activities were carried out, including:
- A training workshop on GIS with the participation of 17 technicians (INFONA, SEAM, and UNA) was organized in Asuncion.
- A workshop to share among FAO's partners the outcomes of the implementation of the tools developed by FAO/INPE.
- A training course for a delegation of Paraguay on the Geoserver/geostoretools was organized by FAO's UN-REDD+.
- At INFONA the work is organized in such way that synergies between the National Forest Inventory activities and the National Forest Monitoring System are ensured.

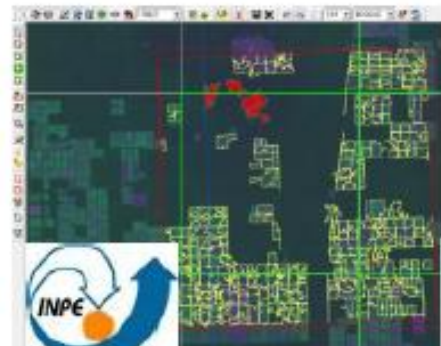
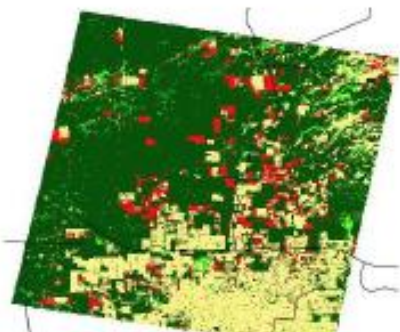


# Results

- A web-GIS forest information portal was developed.
- Information about forest cover is being produced and posted online.



 Sistema Nacional de Monitoreo Forestal de Paraguay



<http://paraguay-smf.org/>

**Sistema Nacional de Información Forestal de Paraguay**

Departamento: Boqueron

Estadística Zoom Estadística

Datos Producidos Durante El Taller De Formación

Estadística Zoom

Capas Capas Seleccionadas

- Capas de Base
- Áreas Administrativas
- Superficie Forestal y Cambio en la Superficie Forestal
  - Cobertura 2000
  - Cambio de la cobertura forestal entre 2000 y 2005. Primeros datos
  - Áreas Protegidas
  - Bosque Intacto
  - Catastro Alto Paraguay 2009
- Información Sobre Salvaguardias
- Otros

Nota de Información Encuesta de Satisfacción



2005

Comentarios

Estadística

Capas Capas Seleccionadas

Selected Layers

Blue Marble

Imágenes utilizadas en el taller

Cambio de la cobertura forestal entre 2000 y 2005. Primeros datos

Cobertura 2000

Departamentos

Limites del País

Lat: -60.43- Lon: -21.75

Capa: Deforestation

Año: 2000-2005

Nombre:

Email:

Comentarios:

Cancel Submit Query

ra forestal entre 2000 y 2005.

005

005



# PNC



## Directrices de FAPI para ser aplicado en territorios indígenas:

- Propuesta de consulta y consentimiento, previo libre e informado.
- Elaborar análisis y propuesta de titulación de tierra y territorio.
- Socialización sobre cambio climático y programa ONU-REDD

# Acciones futuras de la FAPI

- Taller sobre beneficios múltiples con pueblos indígenas
- Elaboración de mapas de sitios sagrados desde la cosmovisión de los pueblos indígenas.







**AGUIJE – GRACIAS**  
**THANK YOU**