

REDD+

Monitoring and Safeguards

Joel Scriven
UN-REDD Programme
FAO



Cancun, Mexico



United Nations

FCCC/CP/2010/7/Add.1



**Framework Convention on
Climate Change**

Distr.: General
15 March 2011

Original: English

Conference of the Parties

**Report of the Conference of the Parties on its sixteenth
session, held in Cancun from 29 November to
10 December 2010**

Addendum

**Part Two: Action taken by the Conference of the Parties
at its sixteenth session**

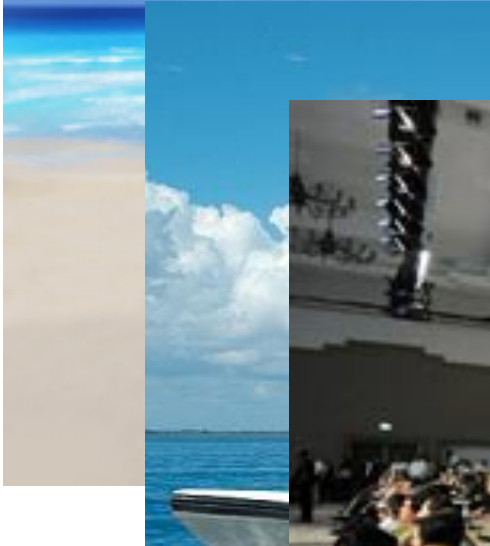
Contents

Decisions adopted by the Conference of the Parties

		<i>Page</i>
<i>Decision</i>		
1/CP.16	The Cancun Agreement: Outcomes of the work of the Ad Hoc Working Group on Long-term Cooperative Action under the Convention	2



Please recycle





Cancun Agreements

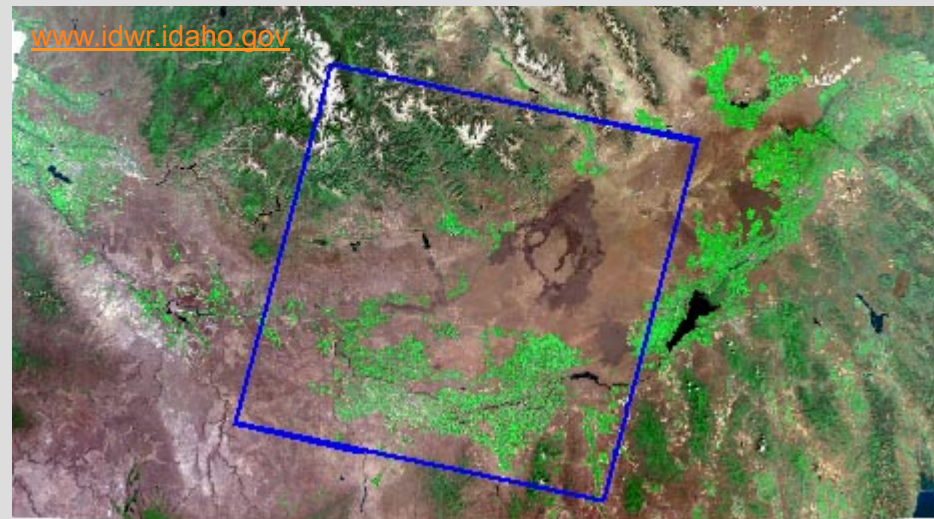
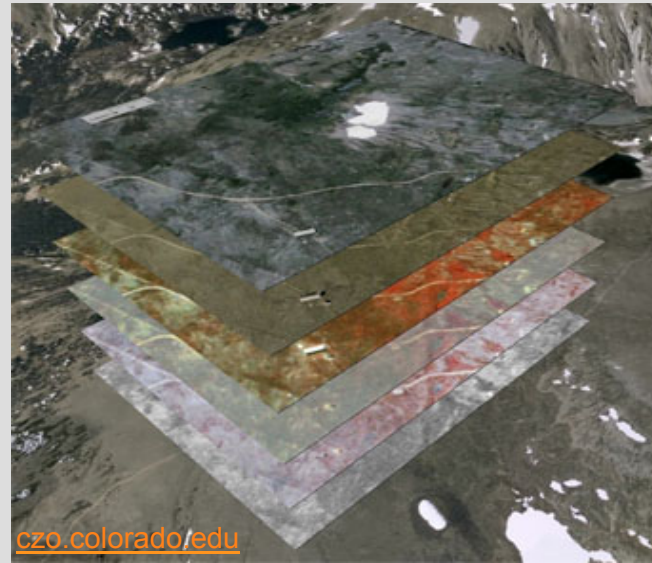
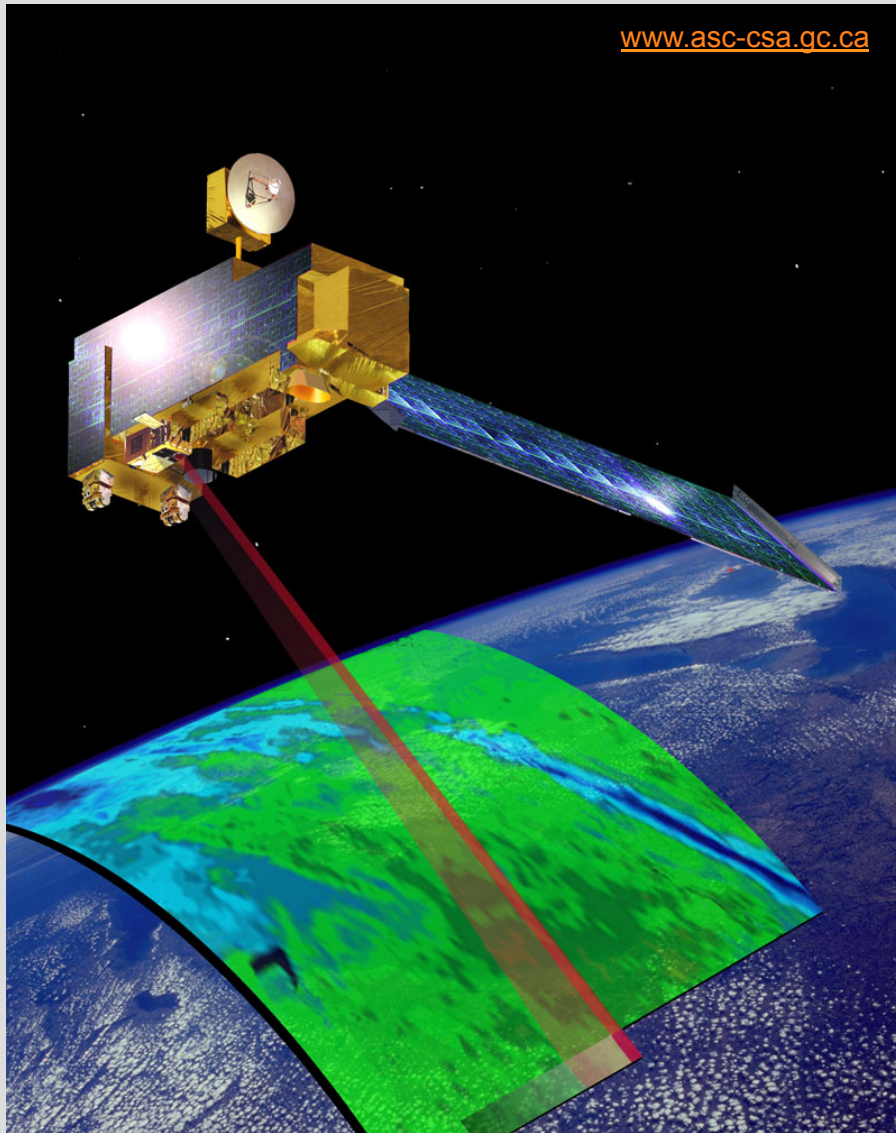
REDD+ and Safeguards

- **Section C:** “Policy approaches and positive incentives on issues relating to reducing emissions from deforestation and forest degradation in developing countries; and the role of conservation, sustainable management of forests and enhancement of forest carbon stocks in developing countries” → **REDD+**
 - National forest monitoring system for the **monitoring of REDD+ activities**
 - REDD+ safeguards should be **promoted and supported** (paragraph 69)
 - Countries should develop a **system for providing information** on how the REDD+ safeguards are being **addressed and respected** (paragraph 71(d))
- **Annex I:** Guidance and **safeguards for REDD+**

Forest Monitoring for REDD+

A thick red horizontal bar that tapers to the right, positioned below the main title.

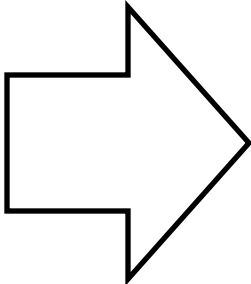
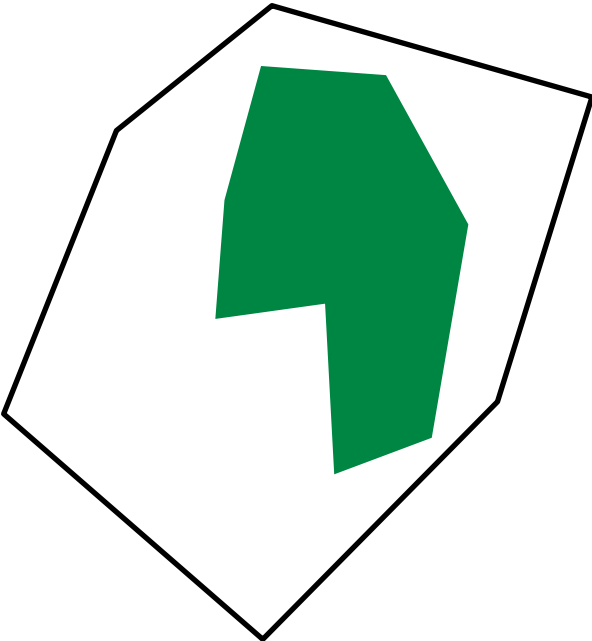
FAO in UN-REDD Programme: Forest monitoring



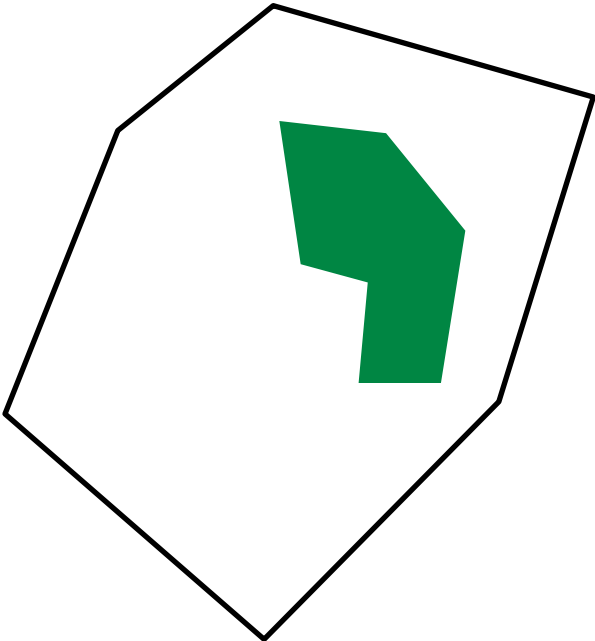
FOREST MONITORING FOR REDD+

REDD+ Activity: Enhancement of forest carbon stocks

Time 1



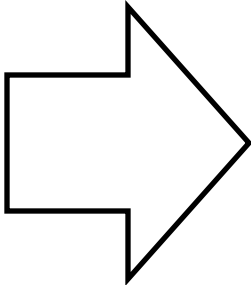
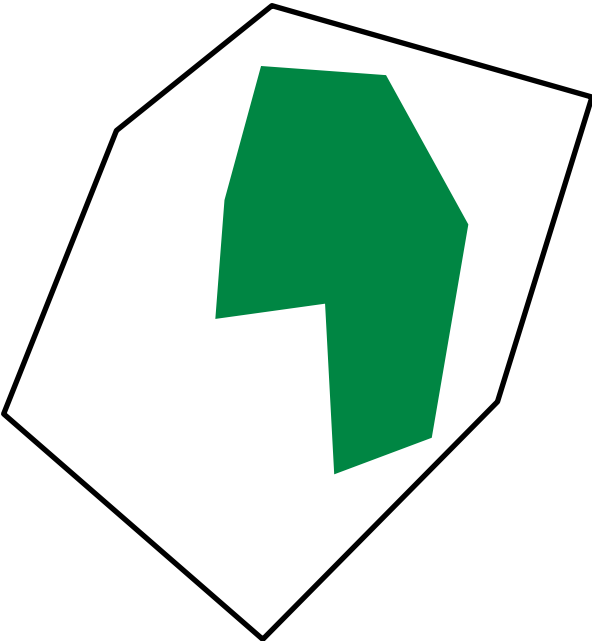
Time 2



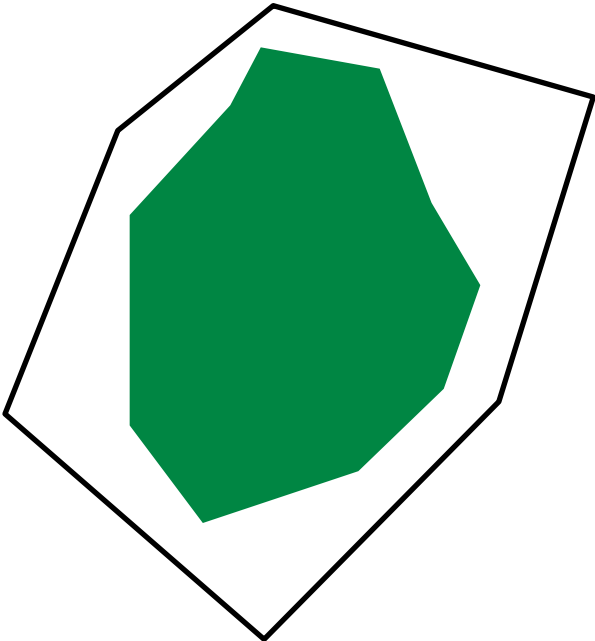
FOREST MONITORING FOR REDD+

REDD+ Activity: Enhancement of forest carbon stocks

Time 1



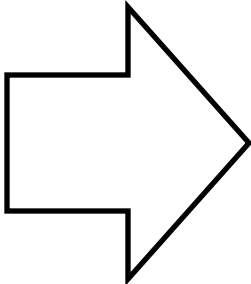
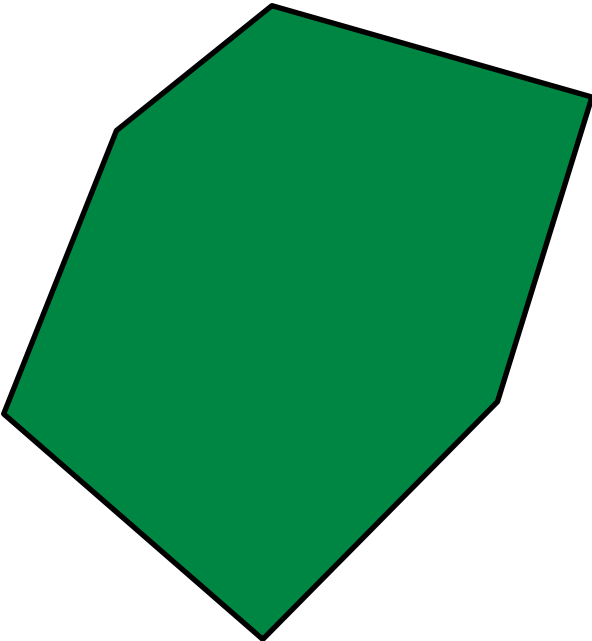
Time 2



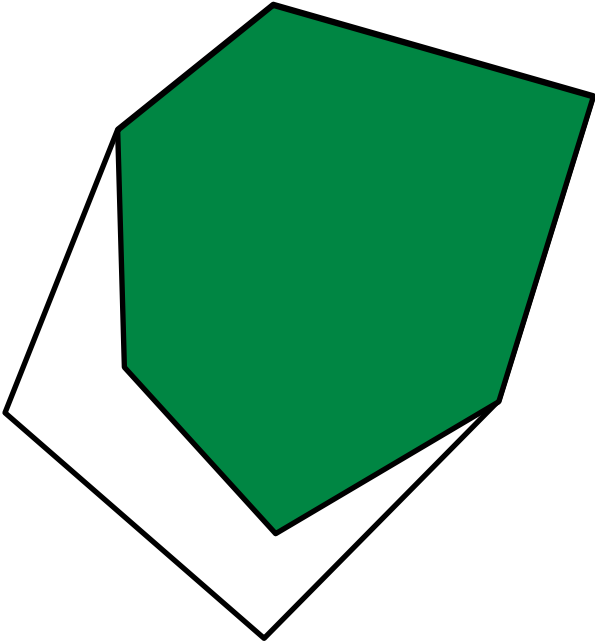
FOREST MONITORING FOR REDD+

REDD+ Activity: Conservation of forest carbon stocks

Time 1



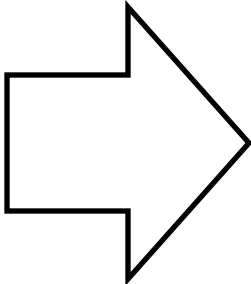
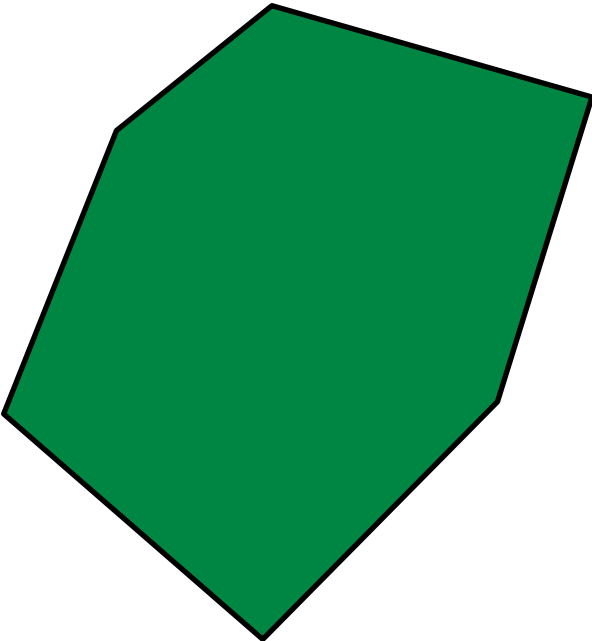
Time 2



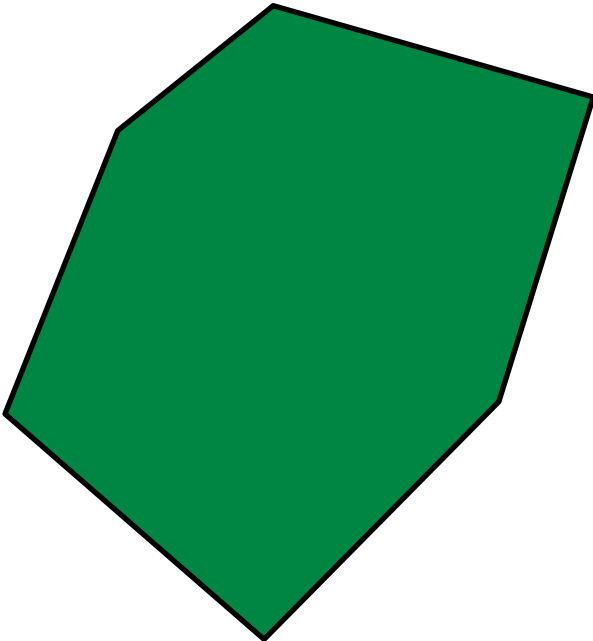
FOREST MONITORING FOR REDD+

REDD+ Activity: Conservation of forest carbon stocks

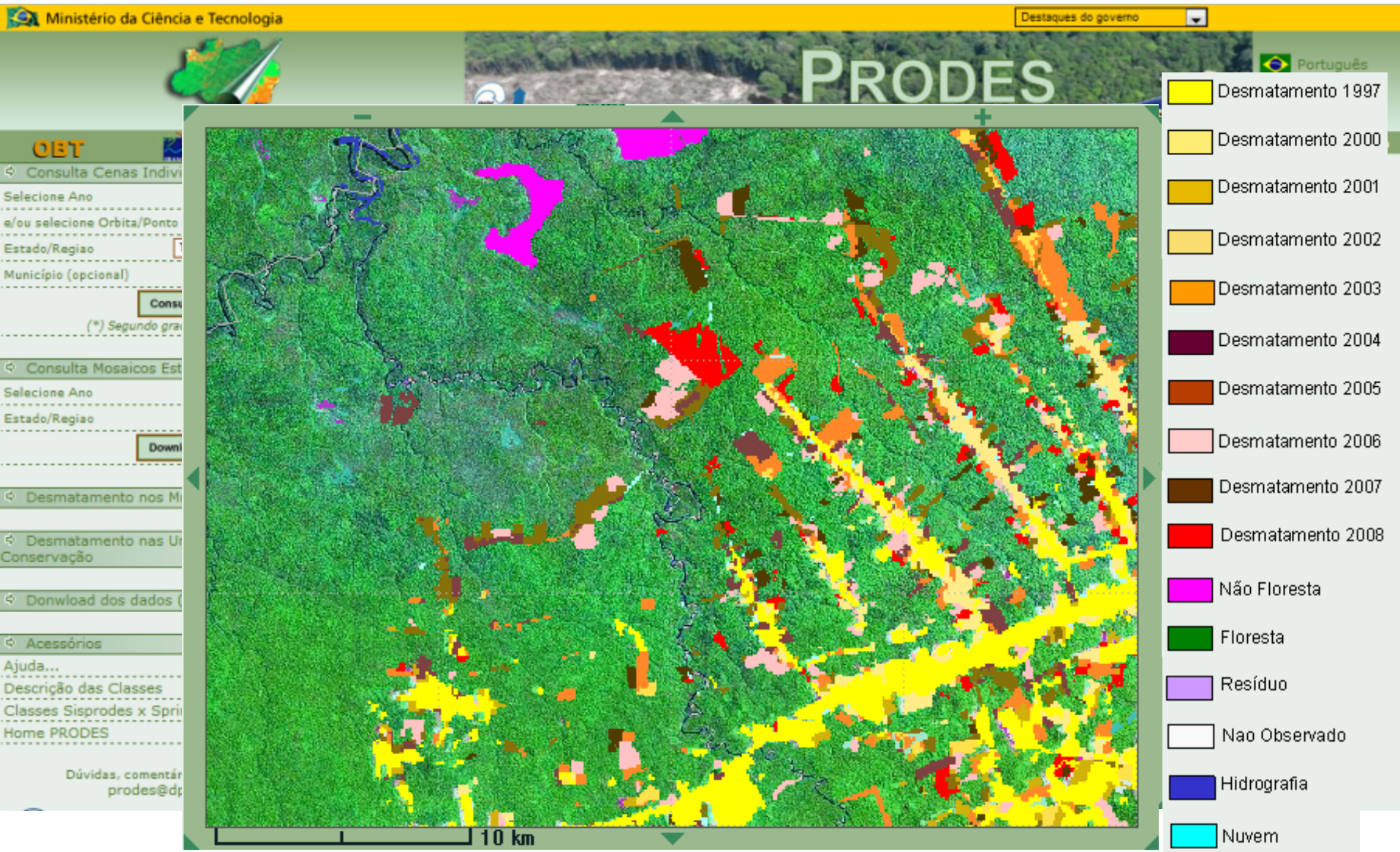
Time 1



Time 2




MONITORING: Brazil's System




<http://www.dpi.inpe.br/prodesdigital/prodes.php>

Democratic Republic of Congo's Forest Monitoring Web-GIS Portal



National Forest Monitoring System
Democratic Republic of the Congo



2010

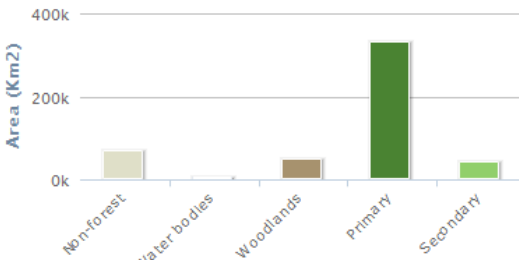
Layers Selected layers

- ▶ Base Layers
- ▶ Administrative Areas
- ▶ REDD+ Initiatives
- ▶ REDD+ Registry
- ▶ Forest area and forest area change
- ▼ Other
 - Plots
 - Protected Areas
 - Logging Concessions
 - Hydrography
 - Ecoregions
 - Roads
 - Settlements

Information note Satisfaction survey Disclaimer

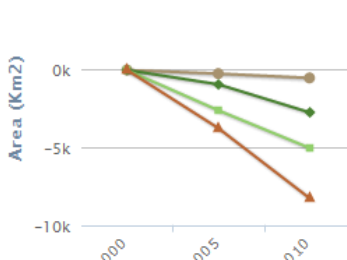
Orientale

Forest Classification * 2010



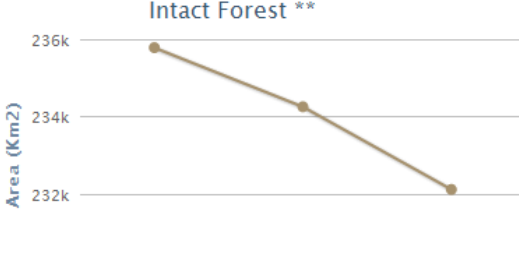
Category	Area (Km2)
Non-forest	~80k
Water bodies	~10k
Woodlands	~60k
Primary	~350k
Secondary	~50k

Forest Area Change *



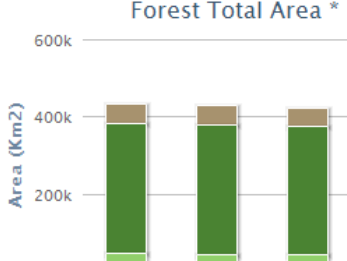
Category	2000	2005	2010
Woodlands	0	~0	~0
Primary	0	~-2k	~-10k
Secondary	0	~-10k	~-20k
Total	0	~-12k	~-30k

Intact Forest **



Year	Area (Km2)
2000	~235.8k
2005	~234.3k
2010	~232.2k

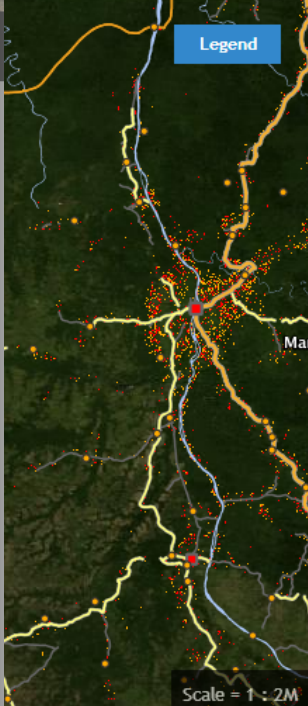
Forest Total Area *



Year	Woodlands	Primary	Secondary	Total
2000	~50k	~350k	~50k	~450k
2005	~50k	~340k	~50k	~440k
2010	~50k	~330k	~50k	~430k

English Français

Legend



Scale = 1 : 2M

Please place the mouse pointer over the charts to see values
The statistics are based on *FACET and **Greenpeace data

Forest Monitoring & REDD+ Safeguards

A thick red horizontal bar that tapers to the right, positioned below the main title.

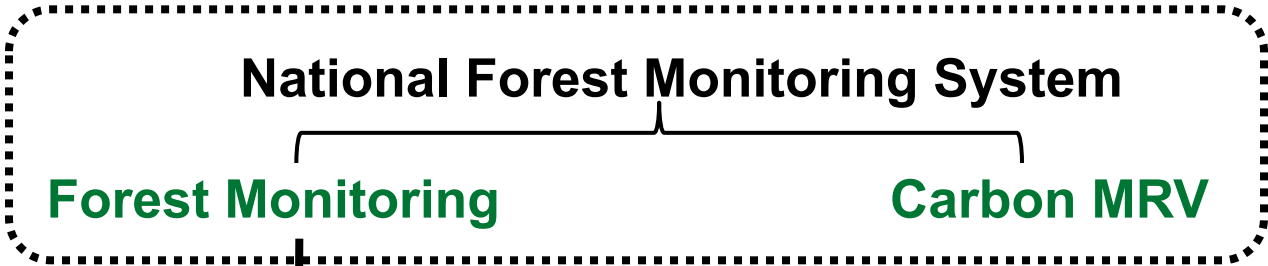


REDD+ Safeguards

Cancun Decision

- The seven Cancun Agreements (Decision 1/CP.16) REDD+ safeguards
 - a) Consistent with the objectives of NFPs and international agreements
 - b) Transparent and effective national forest governance structures
 - c) Respect for the knowledge and rights of indigenous peoples and local communities
 - d) The full and effective participation of relevant stakeholders
 - e) Consistent with the conservation of natural forests and biological diversity
 - f) Actions to address the risks of reversals (permanence)
 - g) Actions to reduce displacement of emissions (leakage)

How can forest monitoring help [*promote/support/address/respect*] the REDD+ safeguards?



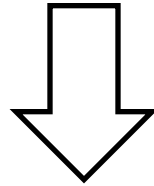
INFORMATION

**REDD+ Safeguards /
Safeguards Info System**

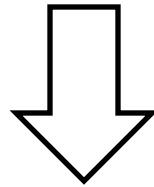


REDD+ Safeguard 1

Consistency with the objectives of national forest programmes and international agreements



Information in the form of ...



Documentation, legislation, policies, etc

REDD+ Safeguard 2

National Forest Monitoring System
Democratic Republic of the Congo

2010

Feedback

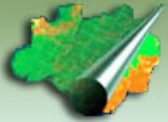


Layers Selected layers

- ▶ Base Layers
- ▶ Administrative Areas
- ▶ REDD+ Initiatives i
- ▶ REDD+ Registry
- ▶ Forest area and forest area change i
- ▼ Other
 - Plots
 - Protected Areas i
 - Logging Concessions i
 - Hydrography i
 - Ecoregions i
 - Roads i
 - Settlements i

Information note Satisfaction survey Disclaimer NFMS mailing list

REDD+ Safeguard 3



OBT **DPI**

↳ Consulta Cenas Individuais

Selecione Ano: 2000 a 2012

e/ou selecione Orbita/Ponto (*)

Estado/Regiao: TODOS

Município (opcional)

Consultar

(*) Segundo grade Landsat TM

↳ Consulta Mosaicos Estaduais

Selecione Ano: 2012

Estado/Regiao: Toda Amazonia Legal

Download

↳ Desmatamento nos Municípios

↳ Desmatamento nas Unidades de Conservação

↳ Download dos dados (sem interface gráfica)

↳ Acessórios

Ajuda...

Descrição das Classes

Classes Sisprodes x Spring

Home PRODES

Dúvidas, comentários e sugestões:
prodes@dpi.inpe.br

Recompor Imagens Satélite Cartografia Mapas Temáticos Tamanho da Tela

Mosaico NASA LandSat 2000 (AMS)/Terras Indigenas/Nenhuma

- Divisão Política
- Rios Principais
- Estradas Principais
- Unidades Conservacao Federais Brasil
- Terras Indigenas**
- Unidades Conservacao Estaduais Brasil
- Biomias Brasileiros
- Grade LandSat TM
- Grade LandSat MSS
- Grade CBERS
- Grade IRS
- Grade CBERS/HRC
- Nenhuma

2000 km N-15-0-0-49-12-0

REDD+ Safeguard 4

National Forest Monitoring System
Democratic Republic of the Congo



2010 [Feedback](#)

Layers Selected layers

- Base Layers
 - Blue Marble i
 - FACET Forest Classification i
 - UCL Forest Classification i
 - Landsat (2005) i
 - Hillshade i
- Administrative Areas
- REDD+ Initiatives i
- REDD+ Registry
- Forest area and forest area change
- Other

Information note Satisfaction survey Disclaimer NFMS mailing list

Dissemination of information

REDD+ Safeguards 5

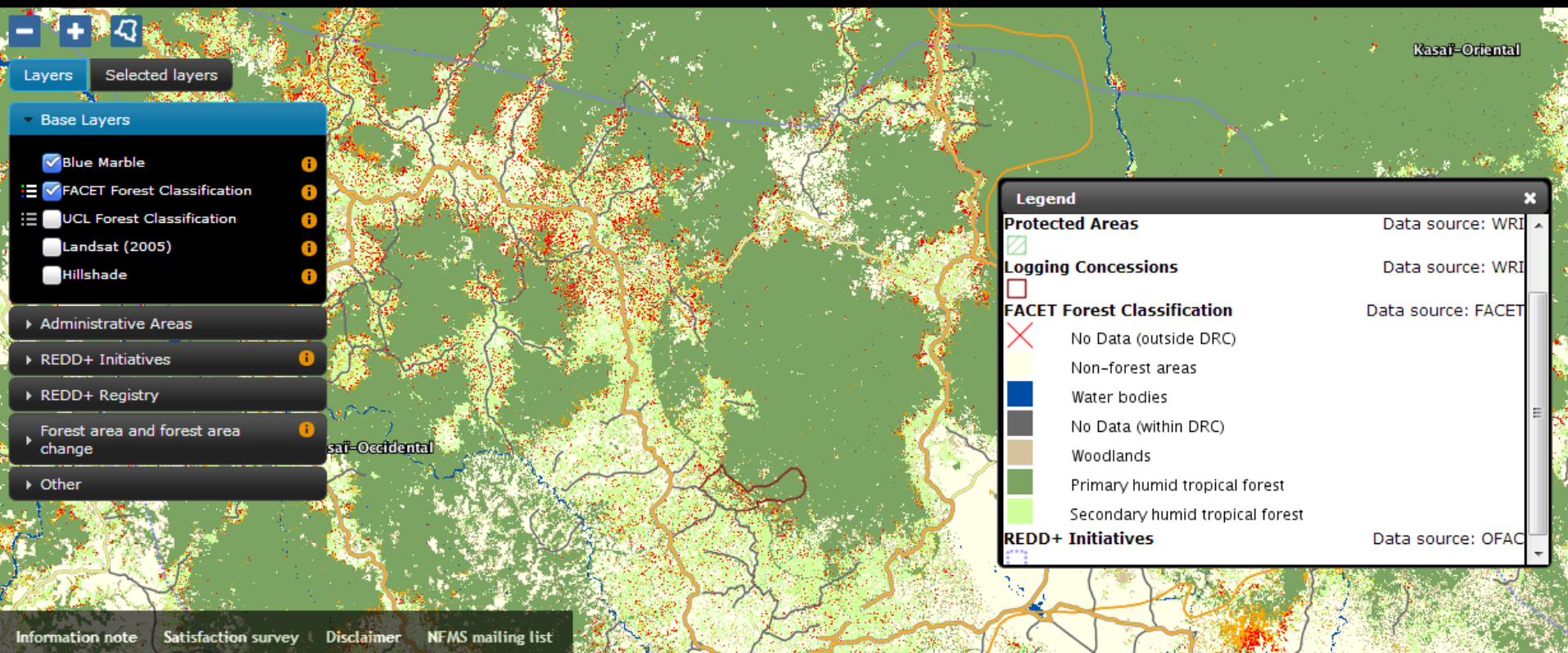


National Forest Monitoring System
Democratic Republic of the Congo

2010

Feedback

Engli



Information note Satisfaction survey Disclaimer NFMS mailing list

REDD+ Safeguards 6 & 7



National Forest Monitoring System
Democratic Republic of the Congo

2010

Feedback



Layers Selected layers

Base Layers

Administrative Areas

REDD+ Initiatives

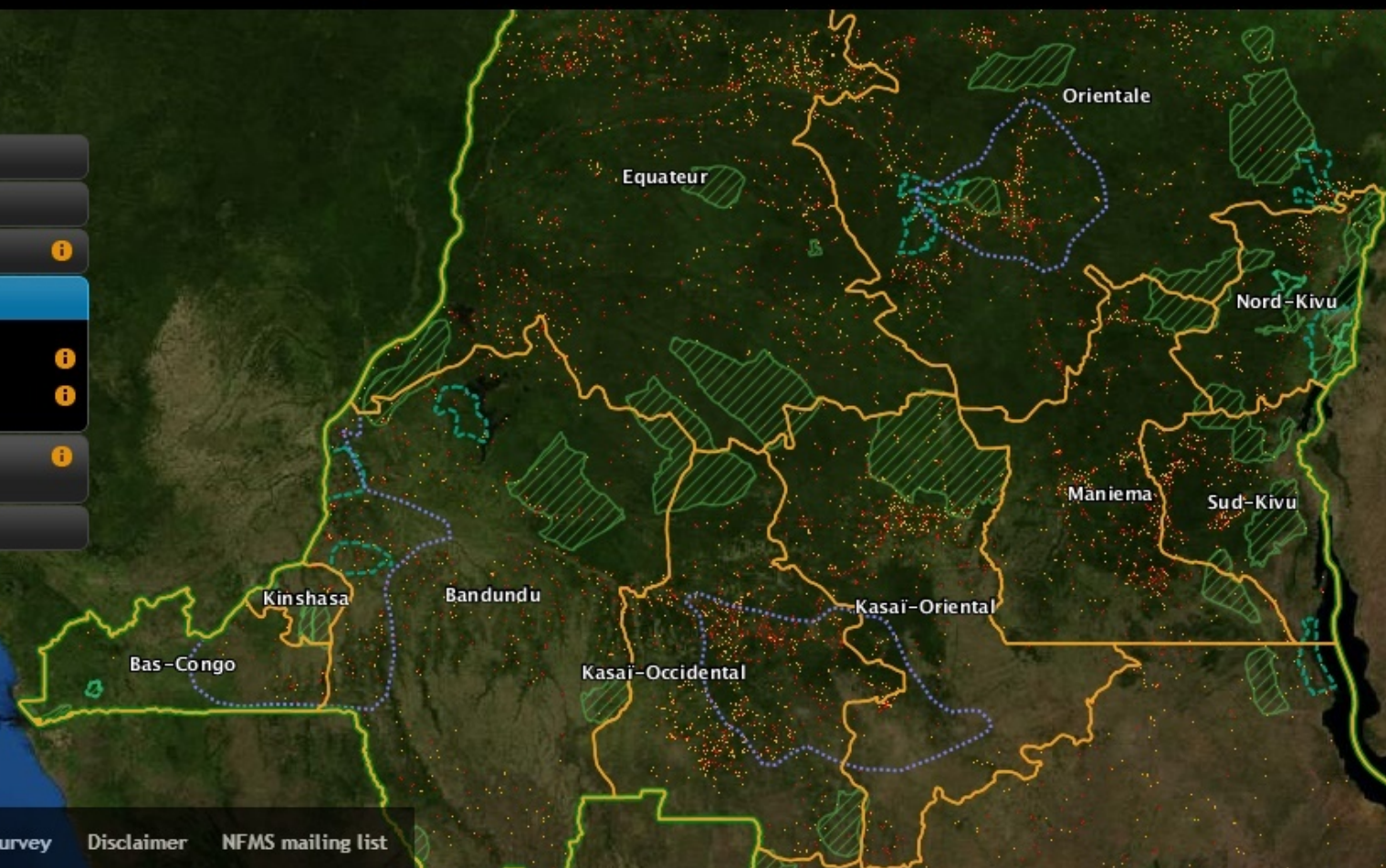
REDD+ Registry

REDD+ Projects

REDD+ Initiatives

Forest area and forest area change

Other



[Information note](#) [Satisfaction survey](#) [Disclaimer](#) [NFMS mailing list](#)



Summary

- Forest monitoring is required to assess the outcomes of REDD+ activities
 - Are the activities working??
- Forest monitoring can also provide useful information on the REDD+ safeguards
- Online “web-GIS portals” can allow open access to forest monitoring (and therefore some safeguard) information
- Forest monitoring is not a silver bullet!
 - Useful for as part of the *system to provide information* on the safeguards
 - Other information is needed!

THANK YOU FOR YOUR ATTENTION!



In Bangkok:

Joel.Scriven@fao.org

Ben.Vickers@fao.org

In Rome:

Matieu.Henry@fao.org

Inge.Jonckheere@fao.org

Danilo.Mollicone@fao.org

UN-REDD
PROGRAMME