



 **Ministerio  
del Ambiente**

# Methodology for generation of the Deforestation Baseline in mainland Ecuador



**CONDESAN**  
Consortio para el Desarrollo Sostenible  
de la Ecorregión Andina

Manuel Peralvo



Jeaneth Delgado

Ecuador

# Objective



Ministerio  
del Ambiente

- Develop and validate a methodological protocol to monitor in a spatially explicit way the historical deforestation of forests nationwide.

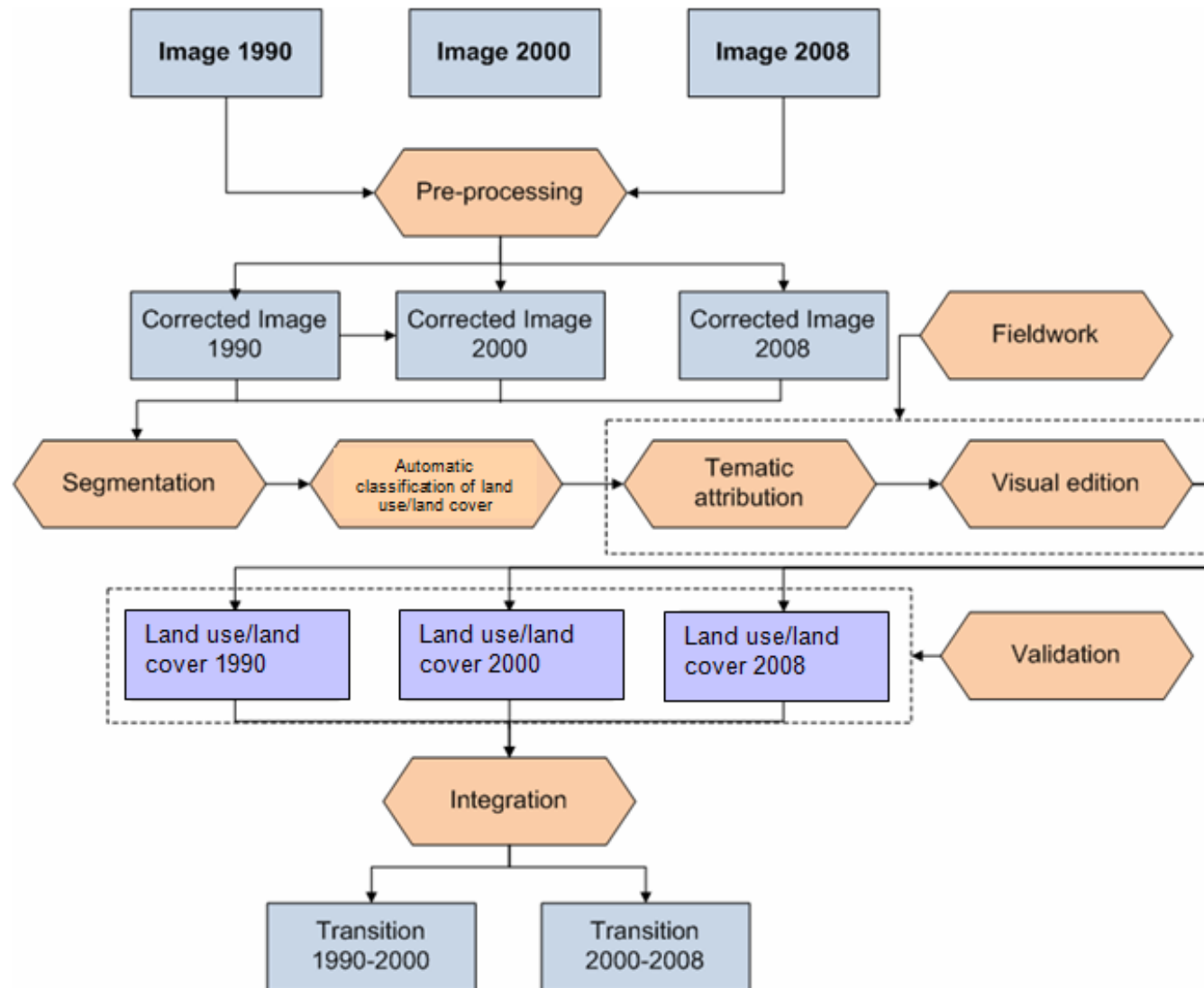
# Specific objectives



Ministerio  
del Ambiente

- To build a methodological proposal to characterize the deforestation nationwide in the years 1990, 2000 and 2008 in a systematic and coherent way.
- To establish procedures for documentation, verification and validation to assess the quality of the information generated.
- To implement and validate the methodology on a set of pilot sites representing the diversity of environmental conditions associated with forest ecosystems in Ecuador.

# Process diagram



# *Initial considerations*



Ministerio  
del Ambiente

- Spatial resolution and study years

Reference years	Periods
1990	1986-1991
2000	2000-2002
2008	2005-2008

- National coverage
- Pixel size 30 m
- MMU 1 ha

# Initial considerations

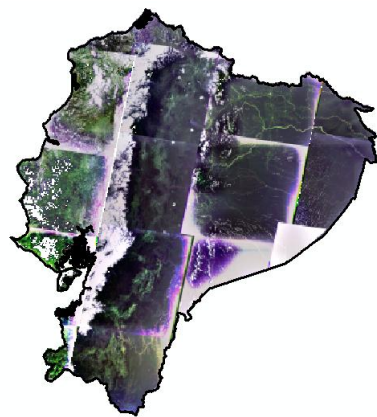


 **Ministerio  
del Ambiente**

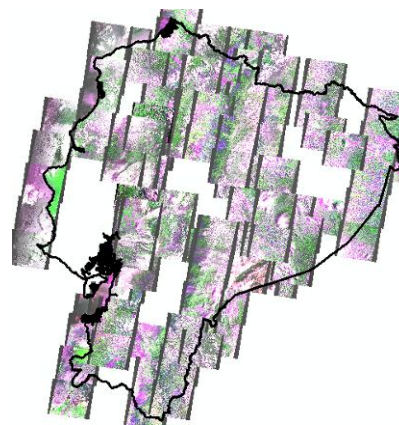
- Selection and gathering of satellite images



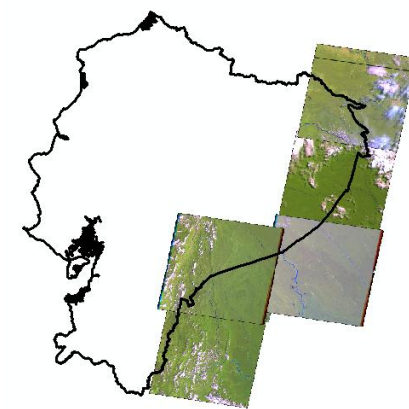
**1990 Landsat**



**2000 Landsat**



**2008 Aster**



**2008 Landsat**

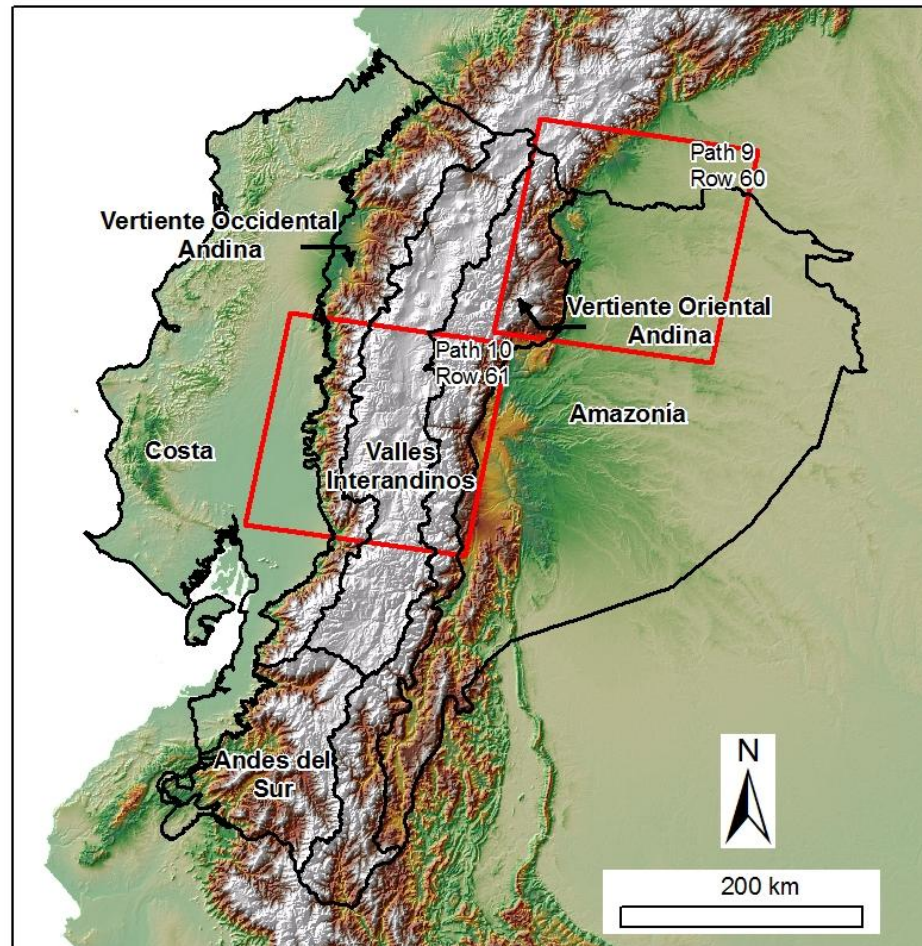


# Initial considerations



Ministerio  
del Ambiente

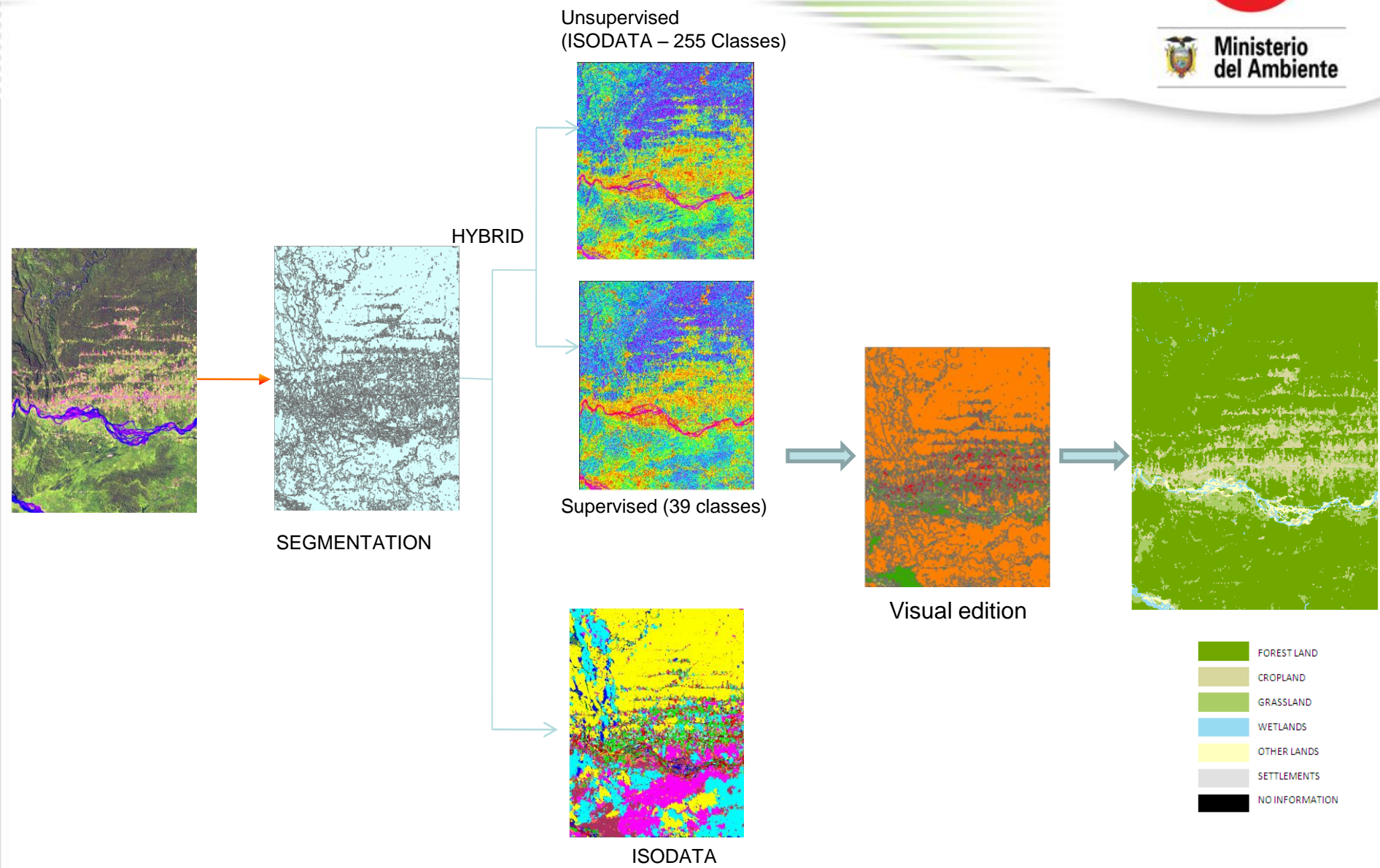
- Definition of sub – regions:



# Clasificación de satellite images



Ministerio del Ambiente





# Accuracy Assessment



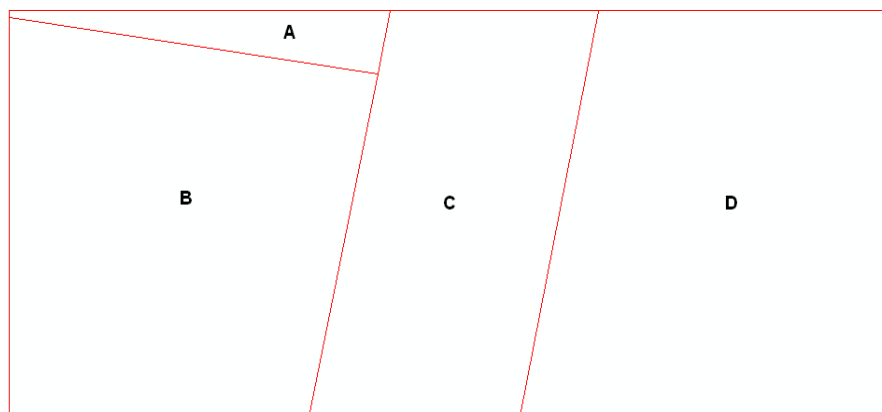
Methodology	Robustness criteria			Image data			Where
	Independent data source	Independent interpretation	Higher quality reference data	1990	2000	2008	
Visual Inspection with the same image	No	Yes	No	Yes	Yes	Yes	Everywhere
Visual Inspection of high resolution imagery	Yes	Yes	Yes	When available**	When available	When available	Where available**
Field Survey	Yes	Yes	Yes	No	No	Yes*	Where feasible



# Report trajectories of change in forest cover

- Transition 2000-2008: Baeza-Papallacta

Initial \ Final	Forest Land	Cropland	Grassland	Wetlands	Settlements	Other lands	No information	Initial area
<b>Forest Land</b>	1537.56	0.36	239.4	2.16				<b>1779.48</b>
<b>Cropland</b>			19.17					<b>19.17</b>
<b>Grassland</b>	322.74	86.58	4452.93	28.71				<b>4890.96</b>
<b>Wetlands</b>	3.69		40.68	175.77				<b>220.14</b>
<b>Settlements</b>								<b>0.00</b>
<b>Other lands</b>								<b>0.00</b>
<b>No information</b>								<b>0.00</b>
<b>Final area</b>	<b>1863.990</b>	<b>86.940</b>	<b>4752.180</b>	<b>206.640</b>	<b>0.00</b>	<b>0.00</b>	<b>0.00</b>	<b>6910</b>
<b>Net change</b>	84.51	67.77	-138.78	-13.50	0.00	0.00	0.00	



Annual rate of Deforestation		
Period	Fragment	Rate %
2001-2005	A	1.19
2001-2007	B	1.47
2001-2005	C	-2.31
2002-2005	D	-0.59

# Recommendations



Ministerio  
del Ambiente

## Implementation of the methodology

- Develop and implement training protocol / control.
- Continue access and systematization process of high resolution information (eg SIG-Tierras).
- Total or partial automation of processes in the methodology.
- Communication / socialization of the protocols.
- Implement continuous improvement and review program of methods.

# Recommendations



Ministerio  
del Ambiente

## ***Research and development topics should include:***

- Complementary processes of pre-processing and classification
- Explore direct classification of changes
- Integration with detection change methods
- Use of active sensors (RADAR) in areas with permanent cloud cover / seasonal phenological variation
- Integration of sensors with low spatial resolution and high temporal resolution (MODIS)



Ministerio  
del Ambiente

## *Un compromiso de Ecuador con el clima, los bosques y las personas*

[www.ambiente.gov.ec](http://www.ambiente.gov.ec)

[manuel.peralvo@condesan.org](mailto:manuel.peralvo@condesan.org)

[mdelgado@ambiente.gov.ec](mailto:mdelgado@ambiente.gov.ec)

**SocioBosque**



Programa de protección de bosques



**CONDESAN**

Consortio para el Desarrollo Sostenible  
de la Ecorregión Andina