

## South-South Knowledge Exchange on national REDD+ fund architectures Oslo, 28 October 2013

### Practical Information

#### Venue

Best Western Karl Johan Hotell

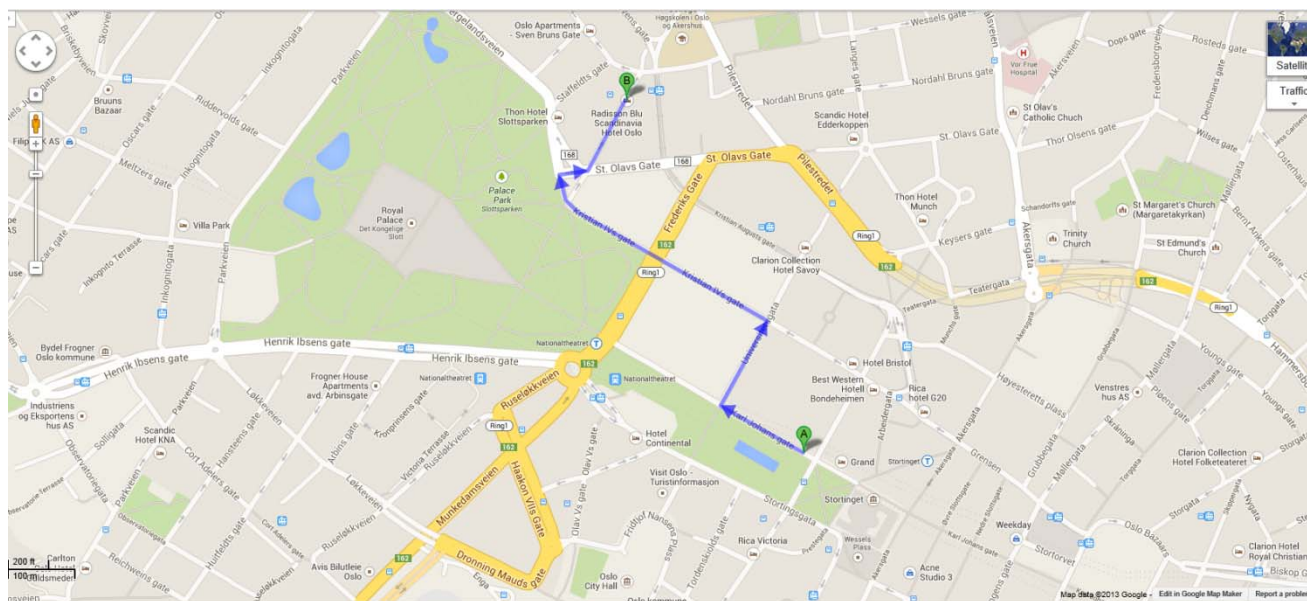
Karl Johans gate 33, 0162 OSLO

Tel: +47 23 16 17 00

[booking@karljohan.no](mailto:booking@karljohan.no) or [bookingsjef@karljohan.no](mailto:bookingsjef@karljohan.no)

[www.karljohan.no](http://www.karljohan.no)

The meeting's venue is located a 3 minute stroll from the metro station "Stortinget" (Parliament) or the metro/ train station "Nationaltheateret" (National Theatre). The latter is also one of the stops for the airport express train. Below is the map from (A) Best Western Karl Johan Hotel to (B) Radisson Blu Scandinavia Hotel where the Oslo REDD+ Exchange (ORE) meeting will be held for those participating in the ORE meeting:



#### Travelling to Norway: visa requirements

Norway forms part of the Schengen area. We recommend all participants to check whether they need a visa, and the processes necessary to obtain such a visa. Please visit the link:

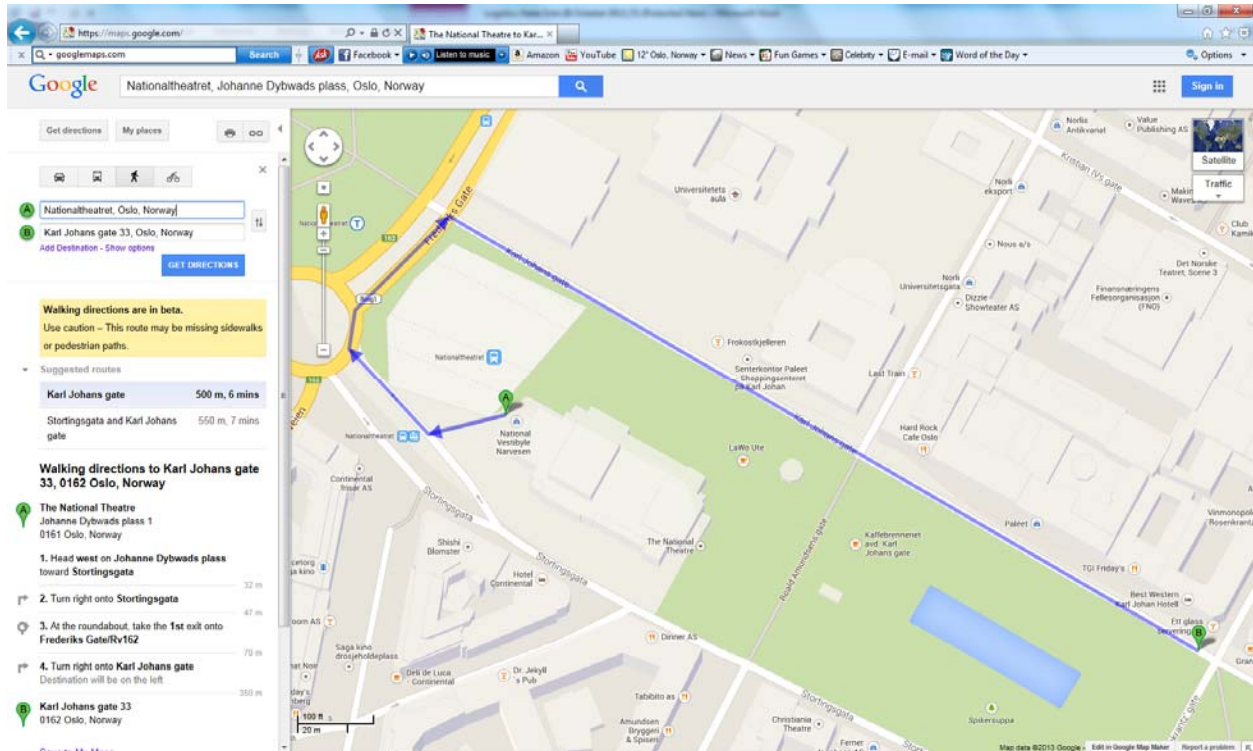
[www.visitnorway.com/en/about-norway/travel-facts/before-you-go/passport-and-visa-requirements](http://www.visitnorway.com/en/about-norway/travel-facts/before-you-go/passport-and-visa-requirements)

for updated information.

#### Transport to/from Oslo Airport Gardermoen

You can travel to and from Oslo Airport Gardermoen, Oslo's international airport, by bus, train, taxi or car. The airport is located 47 km northeast of Oslo.

To get to the hotel, you can take from the airport the “Flytoget Airport Express Train” to “Nationaltheateret” (National theatre). Make sure to chose the exit marked “Nationaltheateret”, and then from the station the easiest way is to take a left turn to get to the main street – Karl Johan – and follow the pavement for 2-3 minutes (in the opposite direction of the castle and towards the Parliament). On your left hand side, after Paleet shopping centre, you will see the hotel. You can get all the information at [www.visitoslo.com/en/transport/transport-airport/oslo-gardermoen](http://www.visitoslo.com/en/transport/transport-airport/oslo-gardermoen)



### How to find your way around Oslo

You will find many ways to get around the city, whether you choose to travel by metro, taxi or on foot in Oslo. All the information can be found at [www.visitoslo.com/en/transport](http://www.visitoslo.com/en/transport)

### Weather in October

The climate in Oslo is fairly mild considering its northerly latitude. However, autumn in Oslo is generally quite chilly and often also rainy. The average temperature in September-October is between 6°C to 10°C. We therefore recommend that you pay attention to weather forecasts in the week before arriving to get a better idea on what to expect. Updated weather forecasts can be found at [www.yr.no](http://www.yr.no).

### General information

Currency: 1 Norwegian krone (NOK) = approximately USD 0.167

Electricity: 230 V; Plugs C & F.

Local time: GMT + 1 hour

Useful link: [www.visitoslo.com/en](http://www.visitoslo.com/en)

## Contact Numbers

Ms. Dina Hajj  
UNDP/UN-REDD Programme  
Mobile: + 41 79 610 6791  
E-mail: [dina.hajj@undp.org](mailto:dina.hajj@undp.org)

Ms. Berta Pesti  
UNDP/UN-REDD Programme  
Mobile : + 41 78 761 2013  
E-mail : [berta.pesti@undp.org](mailto:berta.pesti@undp.org)