

REDD readiness MRV Progress

4th November 2009

Peter Holmgren FAO



Outline

1. Scope of MRV/Monitoring for REDD
2. Long-term Institutional needs
3. Global remote sensing data – now for all
4. Support to National MRV

UN-REDD delivers on MRV for REDD

- at **Country** level
- at International/**Global** level
- with **Partners**
- through **Normative** role
- through **Implementation** on the ground

Some MRV outputs

UN-REDD
PROGRAMME

Role of satellite remote sensing in REDD

by Peter Holmgren
UN-REDD PROGRAMME
13 October 2008



Food and Agriculture Organization of the United Nations
United Nations Development Programme
United Nations Environment Programme

UN-REDD Programme
MRV Working Paper 1
2008



Building Confidence in REDD

Monitoring Beyond Carbon
Executive Summary

Global Witness October 2009

Measuring and Monitoring Terrestrial Carbon

*The State of the Science
and Implications for Policy Makers*

August 2009

Prepared by Tanja Havemann for

The Terrestrial Carbon Group

www.terrestrialcarbon.org

THE
HEINZ
CENTER

and

UN-REDD
PROGRAMME

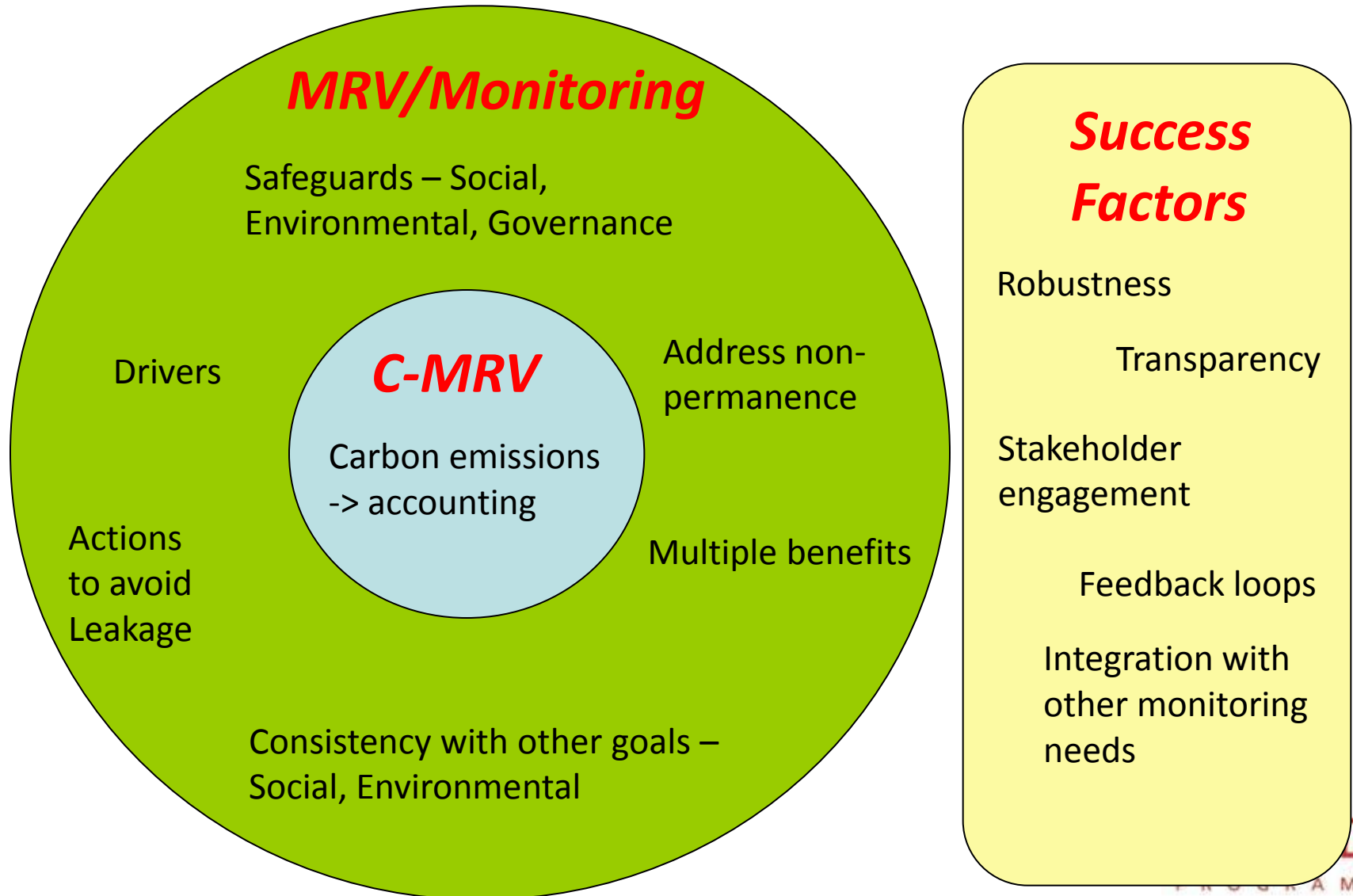
The United Nations Collaborative Programme
on Reducing Emissions from Deforestation and
Forest Degradation in Developing Countries



www.un-redd.org

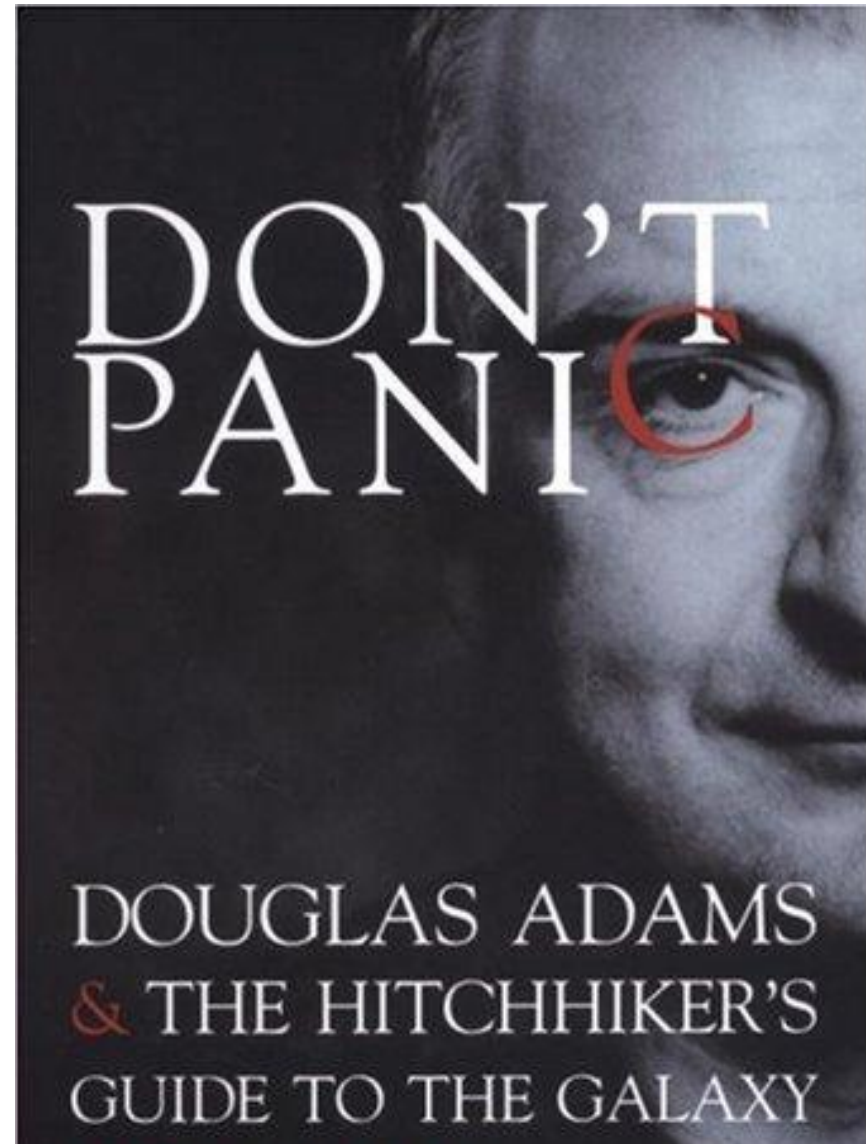
UN-REDD
PROGRAMME

1. Scope of MRV/Monitoring for REDD

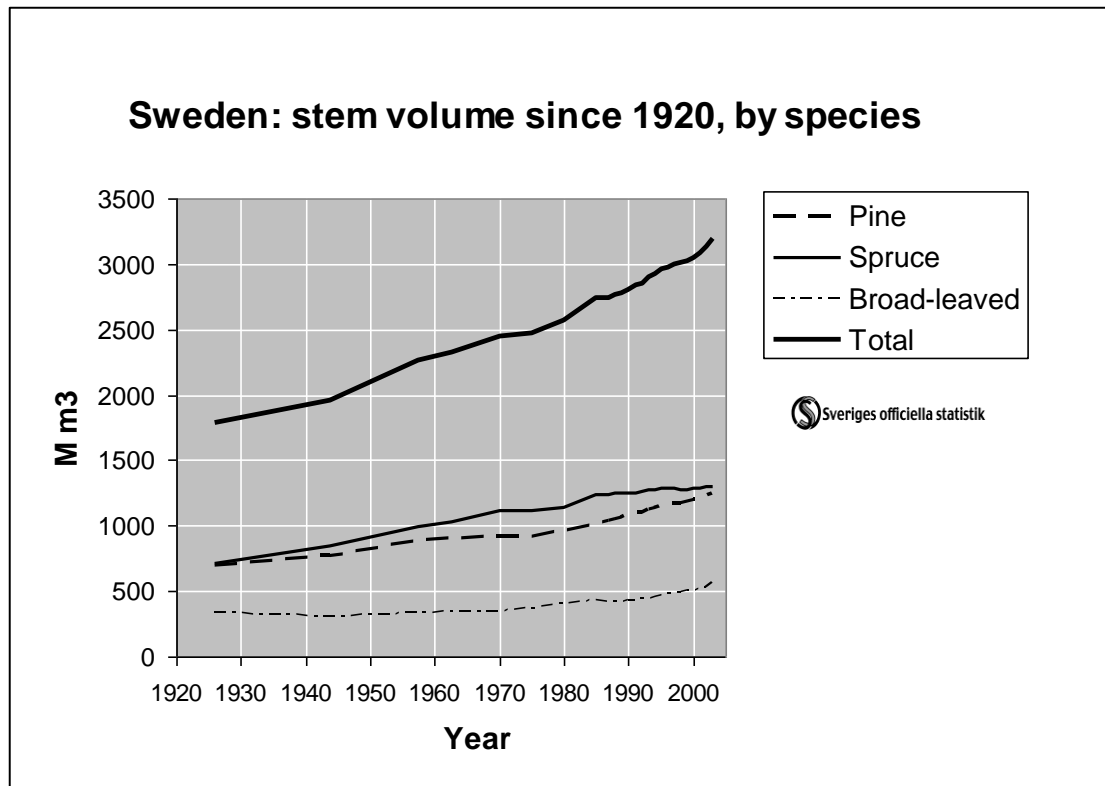


Don't Panic!

- Cost-effective methods are available
- Experience is around
- No need for detailed decisions now
- Give the process time
- Phased approach



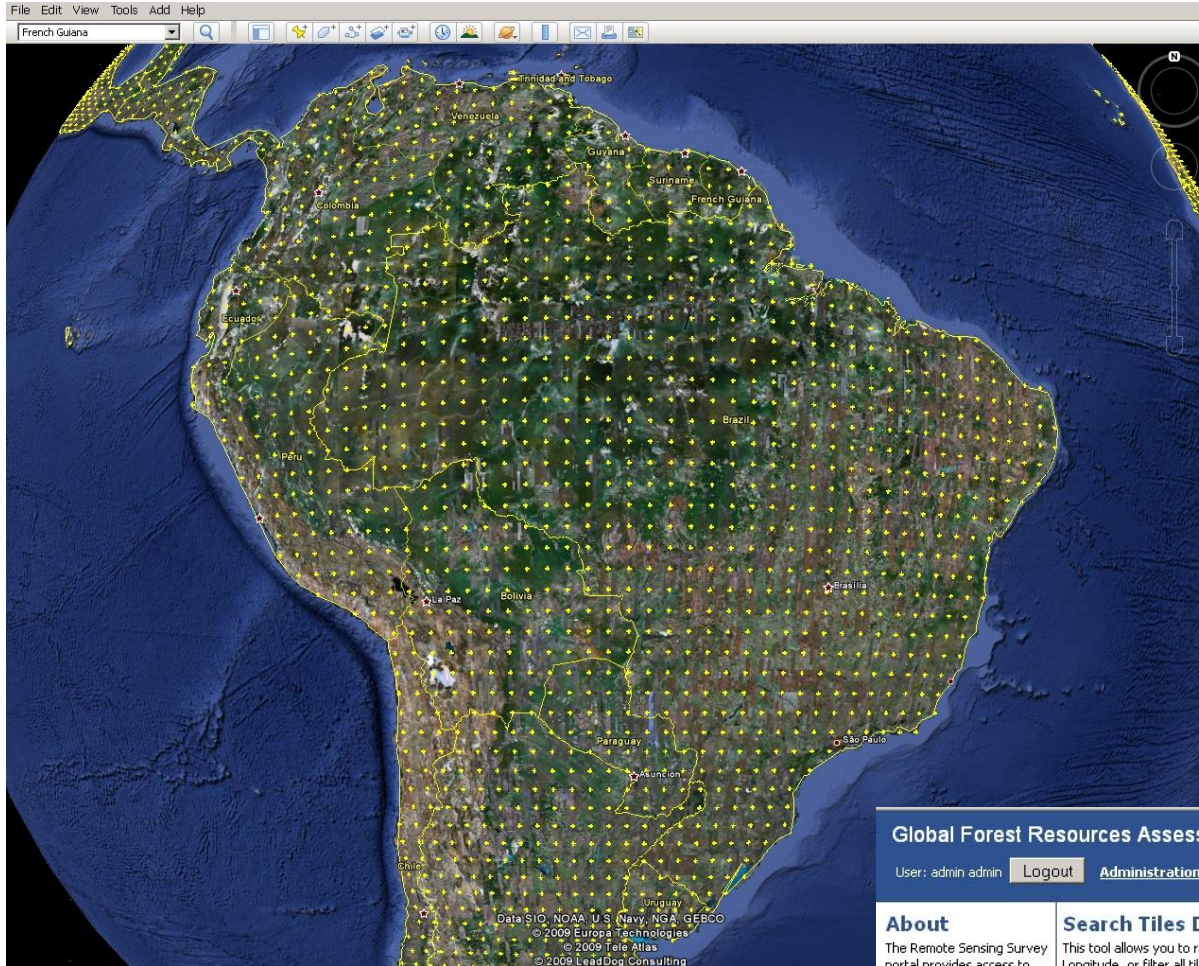
2. Long-term Institutional needs



3. Global Remote Sensing Data

- Needed for detecting change (Activity data)
- Should be
 - Free (part of infrastructure, accessible to all)
 - Frequent (draw from available satellite systems)
 - Useful (standardized deliverables, **ready-to-use**)
- Framework for data now **launched** by FAO
 - Designed for Global Forest Resources Assessments
 - Can also serve national monitoring
 - Included in UN-REDD Country Programmes


Global 1x1 degree grid (13 000 sites)



www.fao.org
Google Earth

Global Forest Resources Assessment Portal

User: admin admin [Logout](#) [Administration](#) [Report](#)



About
The Remote Sensing Survey portal provides access to global sample tiles used by the [Global Forest Resource Assessment \(FRA-RSS\)](#). It enables the search, display and download of tile information, associated satellite imagery and auxiliary data. The database consists of 13,689 samples of 10 km squares located at the junction of each latitude and longitude

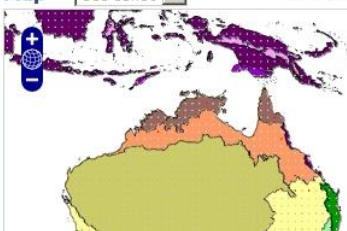
Search Tiles Database
This tool allows you to retrieve single tiles by Latitude and Longitude, or filter all tiles by country and/or ecological region.

Latitude:
Longitude:

Search by **country**:

and/or **ecological zone**:

Map e107s38



DRC 1990 - 2005



10 km

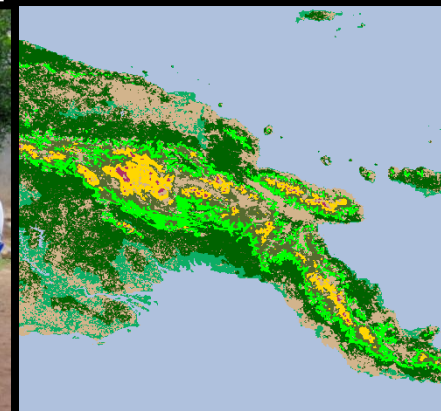
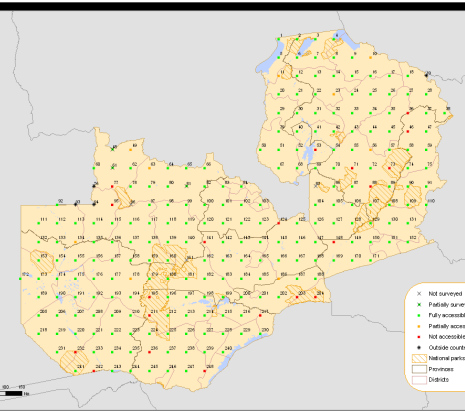
1991 - 2002



10 km

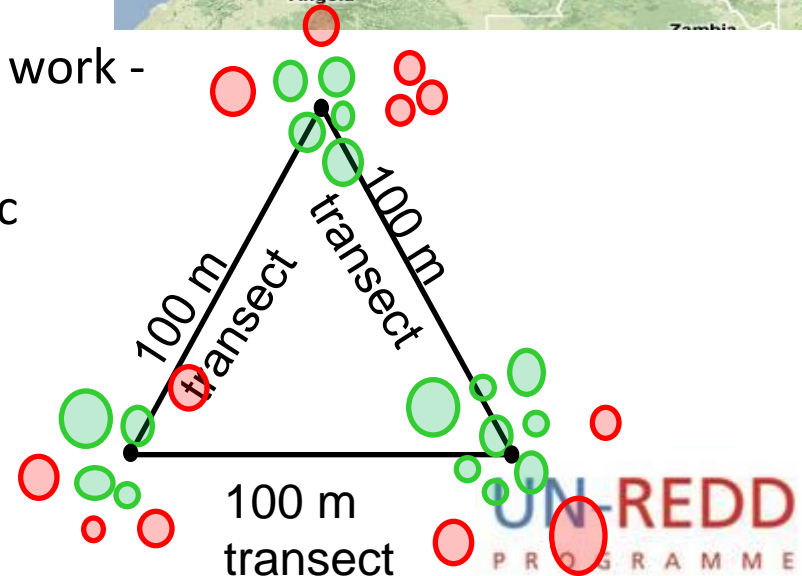
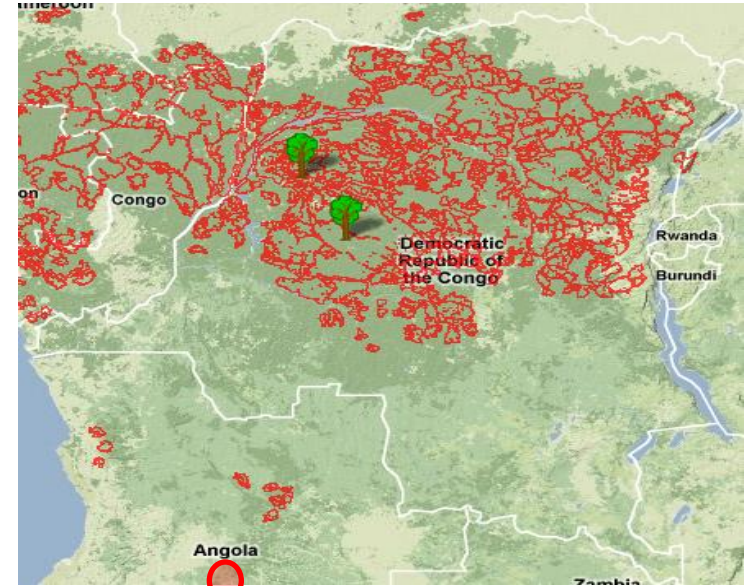
4. Support to National MRV

- Key for **Country Programmes** -> Readiness
- UN-REDD engages country teams
 - e.g. meeting of country experts 10-11 Sep
- In-country consultations
- Development of practical options
 - building on IPCC GPG



DRC: UN-REDD country programme case

- A proposal for a NFI in DRC:
 - **Phase I:** Planning,
 - Institutional arrangements,
 - Stakeholder engagement
 - Remote sensing / Stratification;
 - Preliminary design
 - Carbon
 - Multiple benefits
 - **Phase II:** Preliminary sampling, Field work -> Final design;
 - **Phase III:** Field work, Socio-economic survey, Reporting



Proposal for C-MRV for REDD+

Proposal for a National Carbon Monitoring System for REDD+

MODULE 1:

Background issues & Lesson learned

- UNFCCC reporting requirements
- Legal requirements,
- Definitions system under UNFCCC
- etc.
- Review of National GHGs inventories (Annex I countries and EU)
- Summary tables for comparison and evaluation of the processes and their progress (i.e. are the countries moving forwards? Which are the main difficulties encountered in reporting? Which were or are the most difficult data to collect? Etc.)

MODULE 2:

Systems for data input

- **Guidelines on NFI (National Forest Inventory)**
- **Guidelines on RS land monitoring system to assess activity data**

Some partners

- UN-REDD Programme (FAO, UNDP, UNEP)
- UN-REDD countries
- UNFCCC Secretariat
- Brazil – INPE
- EPA and FIA (USA)
- ITTO - REDDES
- GTZ
- GOFC-GOLD
- GEO FCT
- Terrestrial Carbon Group
- Google
- Coalition for Rainforest Nations (CfRN)
- WB FCPF
- Australia

Concluding thoughts about MRV

- MRV scope is **broad**
- Need for **guidance** on national MRV options
- **Science based** and developed with proven methodologies
- Take in consideration **national circumstances** and developments
- **Stakeholder engagement**
- **Robust and Transparent**
- Don't Panic!