

GIS working sessions - maps tailored to answering specific questions

Lucy Goodman

10 October 2013



Why make maps? Planning

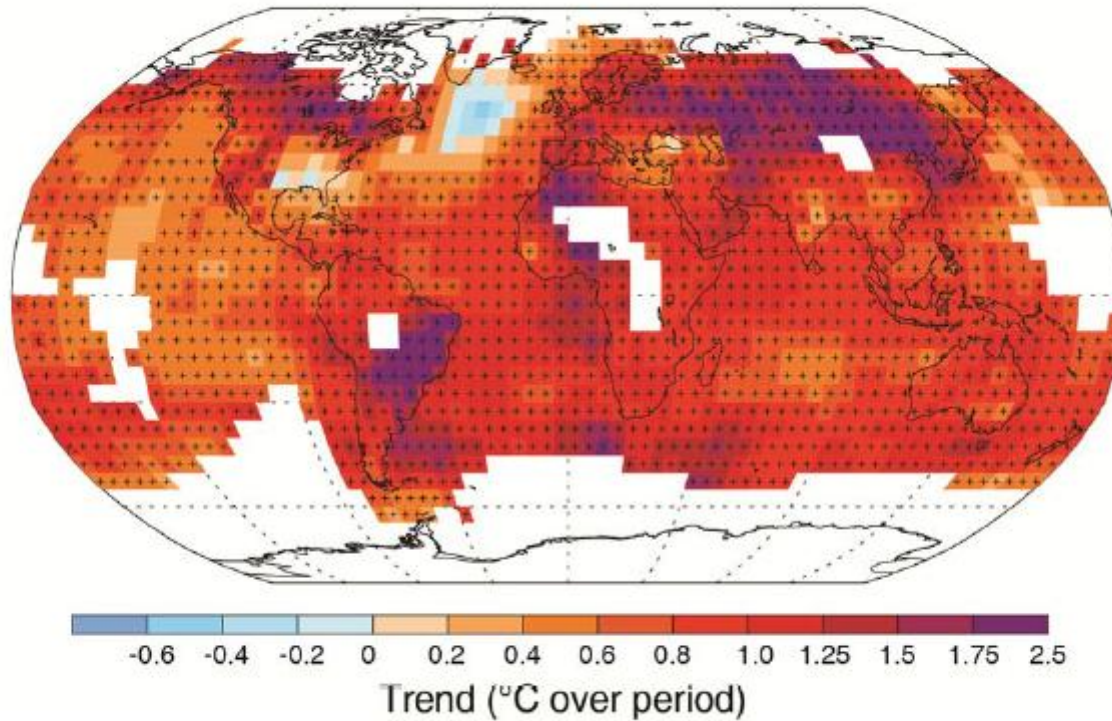


Why make maps? Engagement

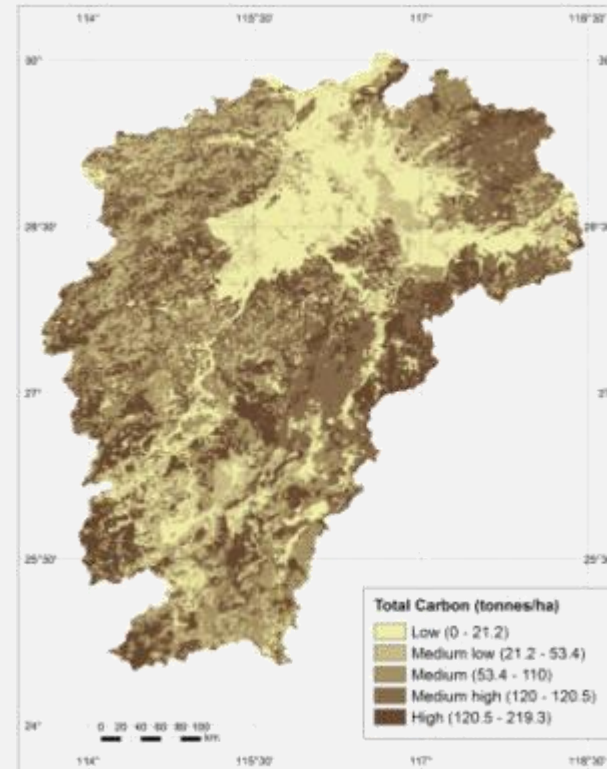


Why make maps? Awareness raising

Observed change in average surface temperature 1901–2012



- **REDD+ planning**
- Stakeholder engagement to understand priorities
- Develop awareness raising materials

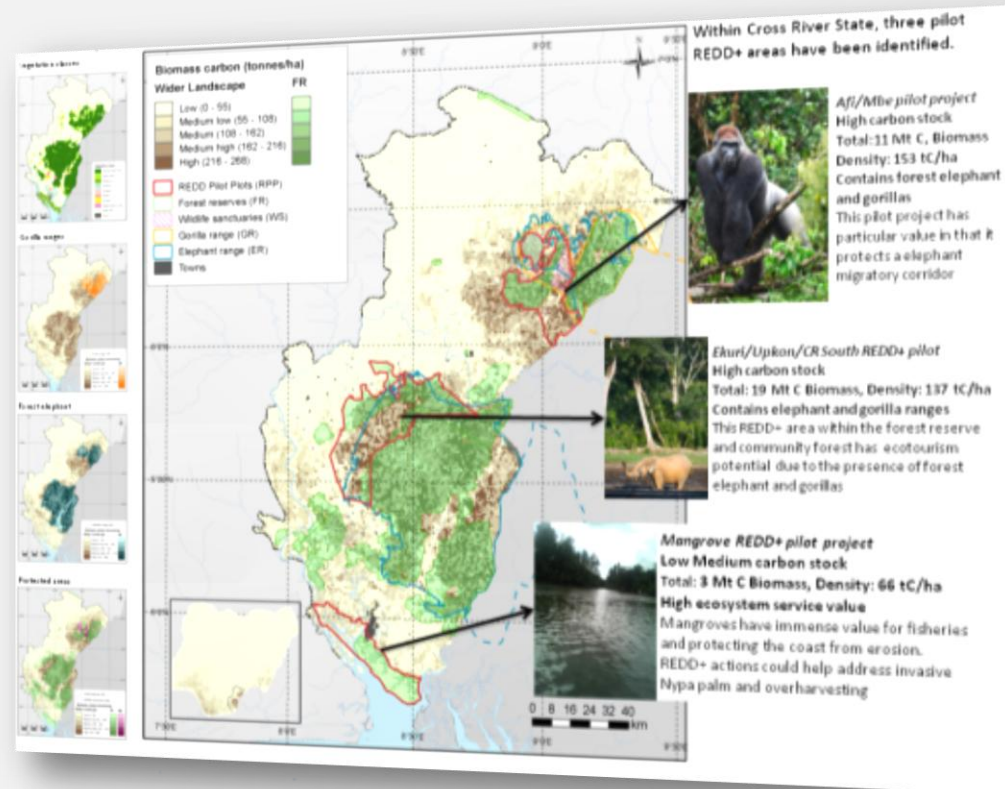


GIS Working session objectives

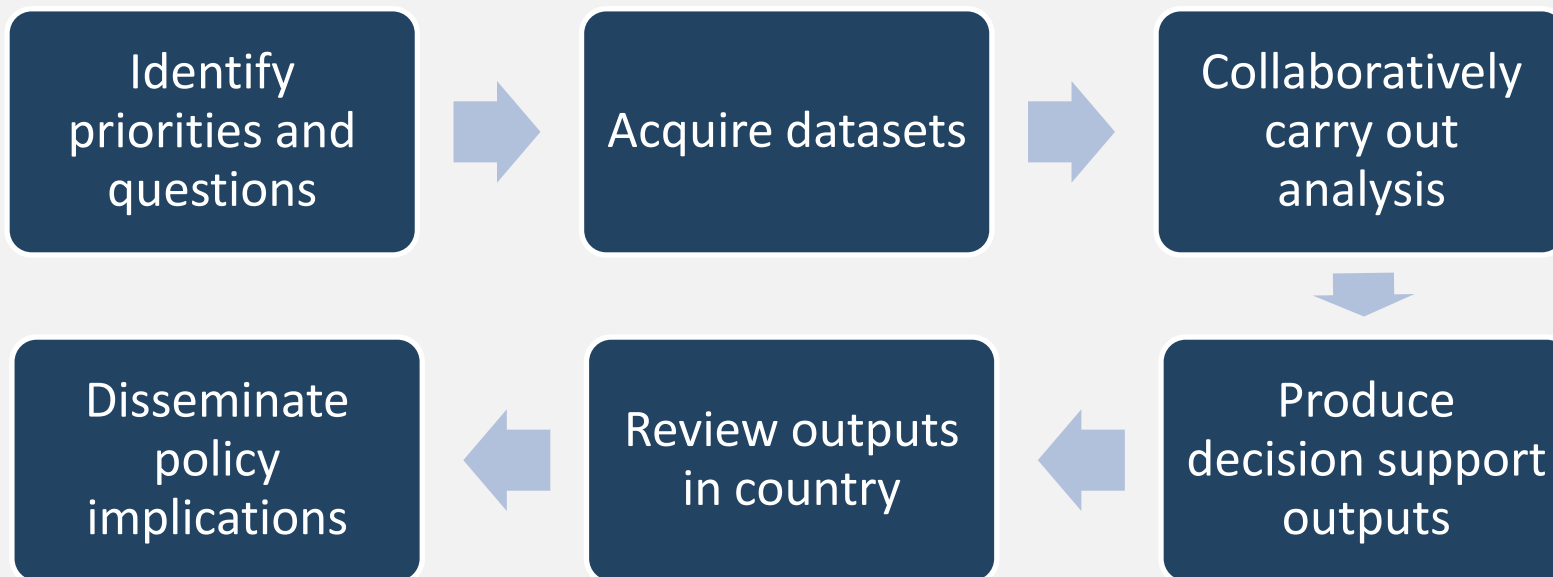
- REDD+ planning
- **Stakeholder engagement to understand priorities**
- Develop awareness raising materials



- REDD+ planning
- Stakeholder engagement to understand priorities
- **Develop awareness raising materials**



Working session sequence



Questions maps can answer

- Where is there **overlap** between the **benefits from REDD+?**

National geographic



Questions maps can answer

- Where are the **trade offs**?



- National databases
 - Government
 - Civil society
 - Private sector
- International databases
 - Carbon in biomass
 - Carbon in soil
 - Vegetation cover
 - Key biodiversity areas
 - ...



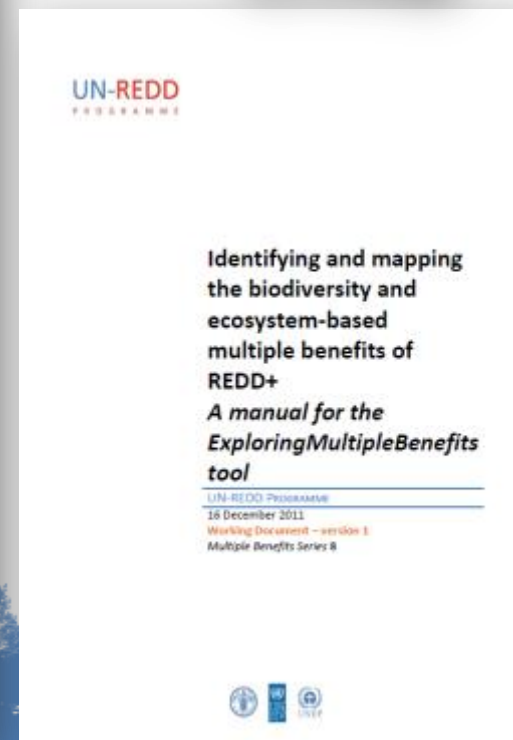
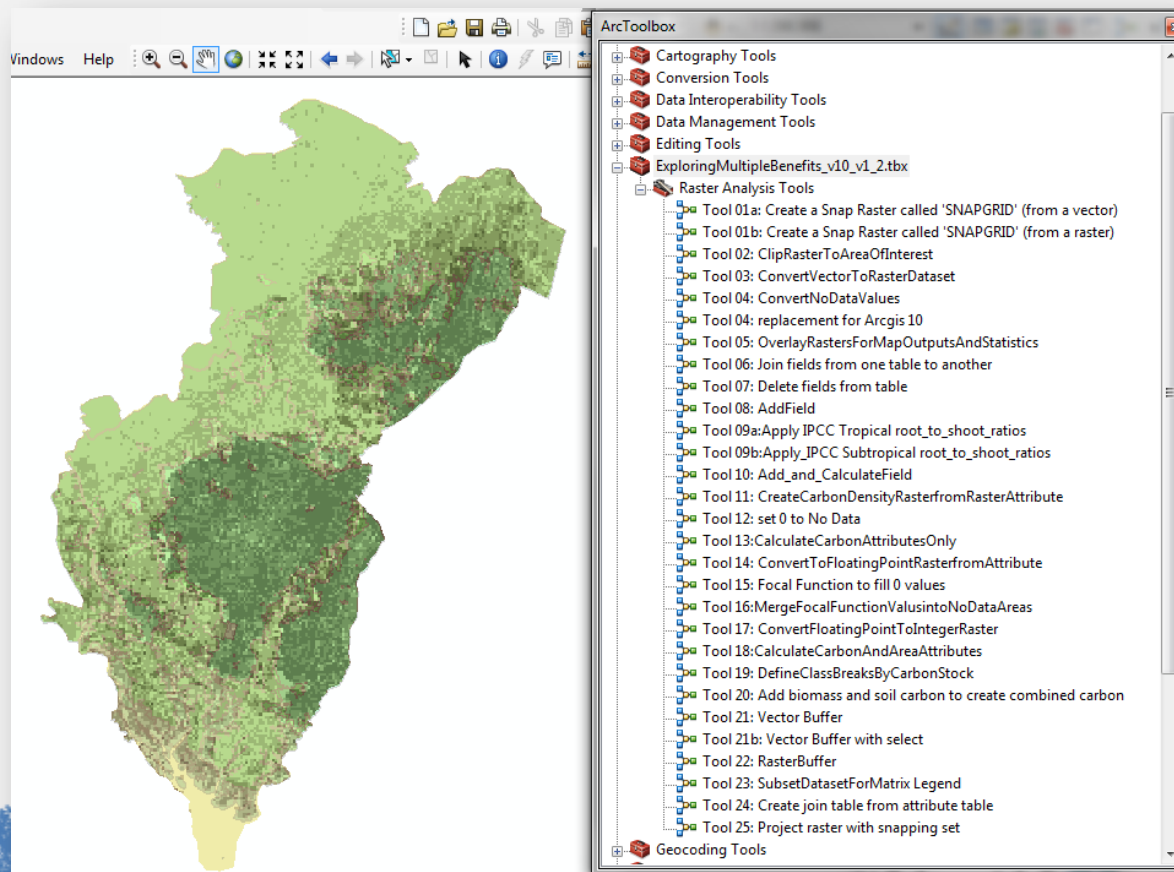
- National databases
 - Government
 - Civil society
 - Private sector
- International databases
 - Carbon in biomass
 - Carbon in soil
 - Vegetation cover
 - Key biodiversity areas
 - ...

Day 3 - Clinic sessions

| Time | Session | Presenters / Facilitators |
|------------|--|--|
| 8.50-9.00 | Recap of Day 2 | Participant volunteer |
| | Aim of Day 3 | Robert Munroe (UNEP-WCMC) |
| 9.00-12.00 | 3 clinics (each clinic session lasts for 90 minutes, participants will attend two): | |
| | How local stakeholders can effectively participate in collecting and validating data, and how spatial analysis can also be used to help enhance participation in decision making | Facilitator: Aki Kono (UNDP) |
| | Free global spatial datasets available for REDD+ planning that enhances multiple benefits | Facilitator: Lucy Goodman (UNEP-WCMC) |
| | Economic analyses for REDD+ | Facilitator: Robert Munroe (UNEP-WCMC) |
| 10.30 | Coffee and snacks available | |



http://www.un-redd.org/Multiple_Benefits_GIS_Mapping_Toolbox/tabid/79198/Default.aspx



Cancun safeguards (2010):

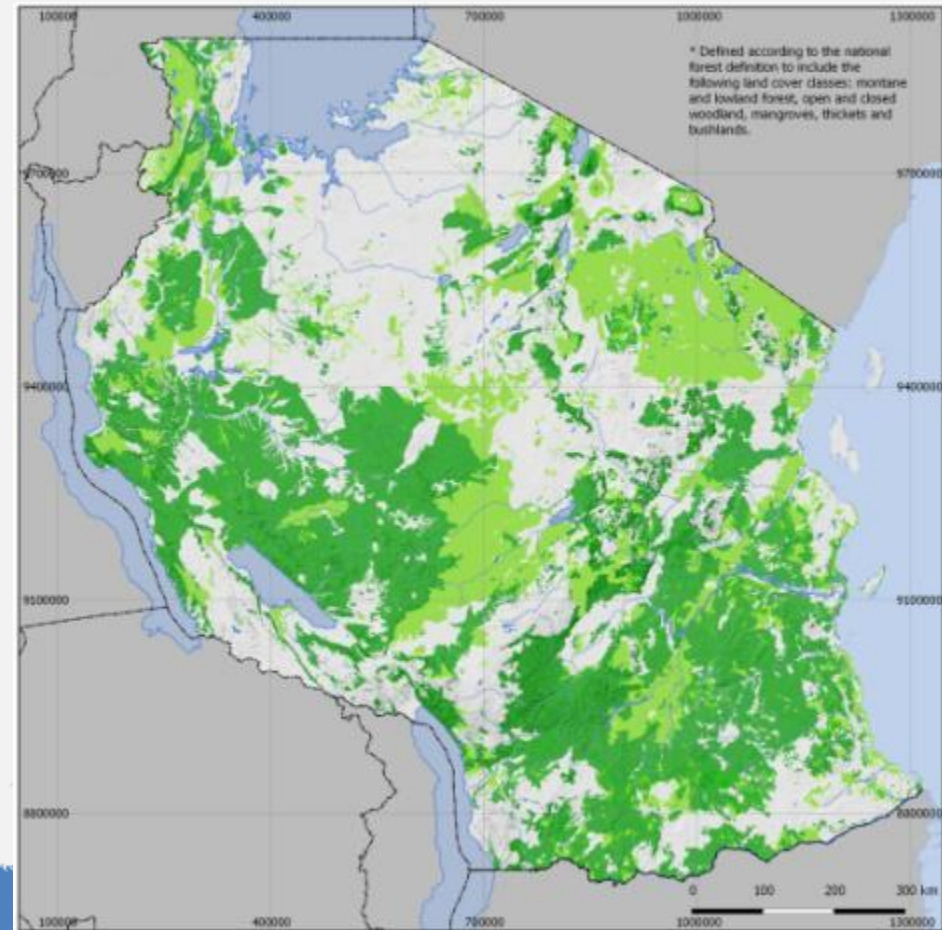
- “[REDD+] Actions are consistent with the conservation of **natural forests** and biological diversity, ensuring that actions referred to in paragraph 70 of this decision are not used for the conversion of **natural forests**, but are instead used to incentivize the protection and conservation of **natural forests** and their ecosystem services, and to enhance other social and environmental benefits”

Cancun Agreement: FCCC/CP/2010/7/Add.1 Appendix I

Natural forest

Forest composed of indigenous trees, not planted by man.





**For afforestation and reforestation project activities -
Host Party's selected single minimum:**

**A single minimum tree
crown cover value
between 10 and 30 per
cent**

**A single minimum
land area value
between 0,05 and 1
hectare**

**A single minimum
tree height value
between 2 and 5
metres**

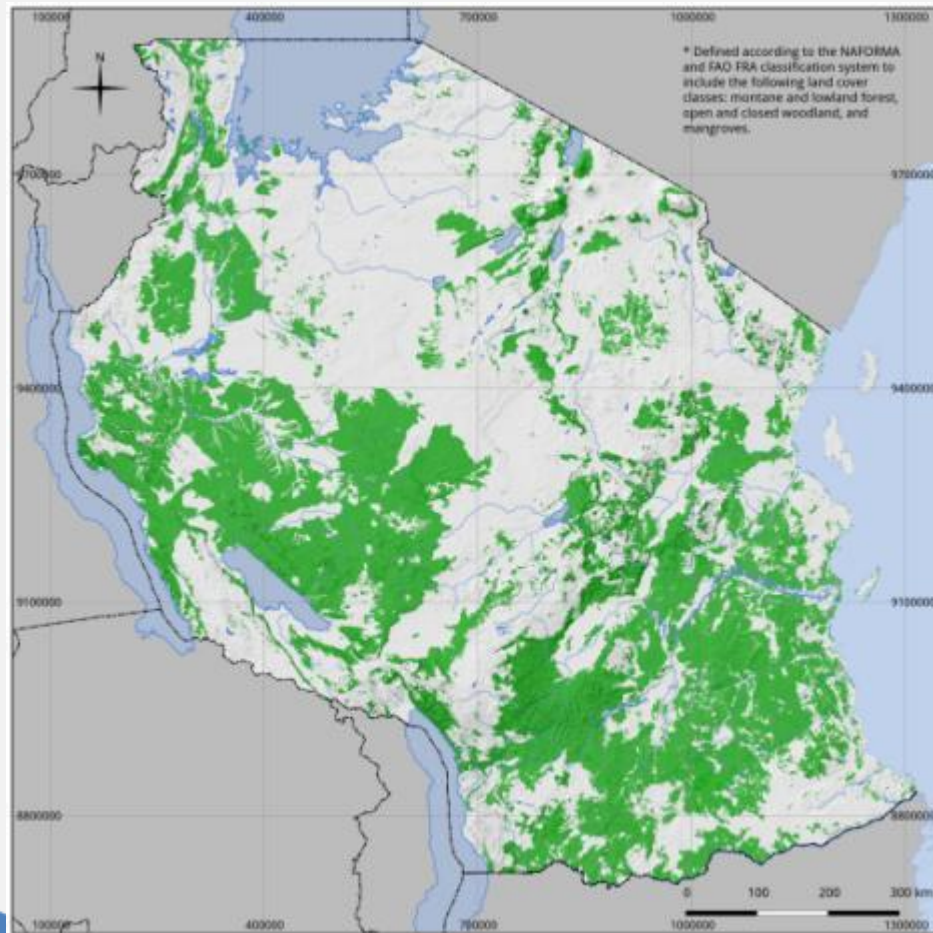
**United
Republic of
Tanzania**

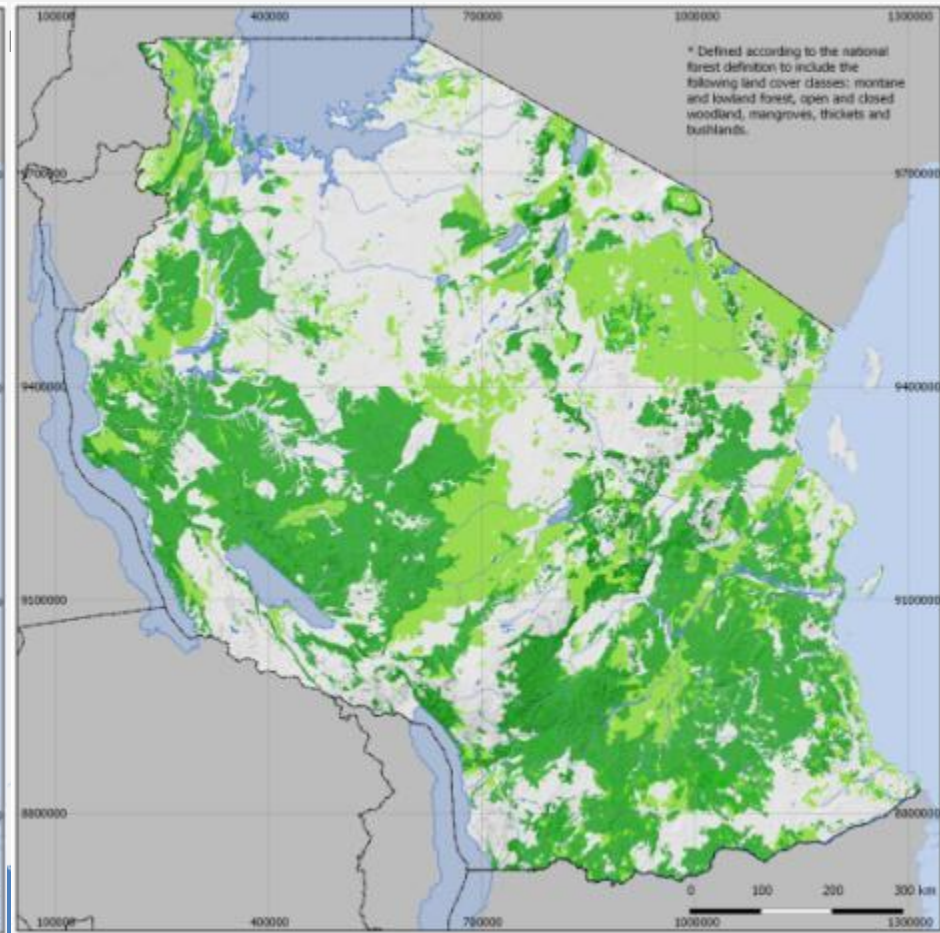
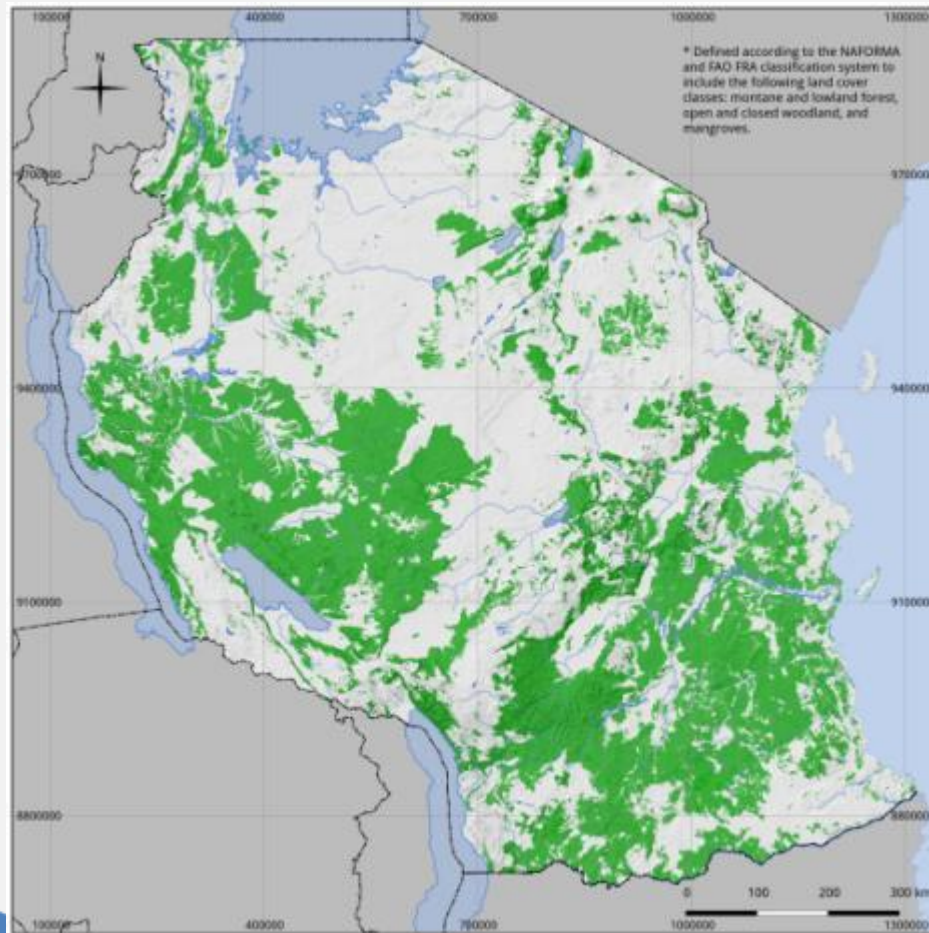
10

0.05

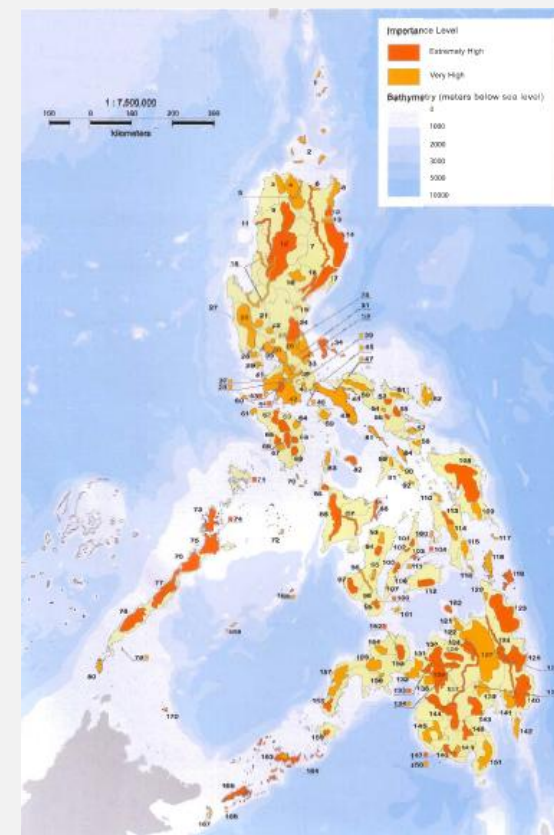
2







- What are the **important questions for REDD+ planning**, and the **priorities for the benefits from REDD+**?
- What **data is available**, and what has already been done before that we can **add value to**?
- How to link **GIS technicians to policy makers**



Thank you!



lucy.goodman@unep-wcmc.org

