



Mongolian forest community participation in REDD+ and from international experiences



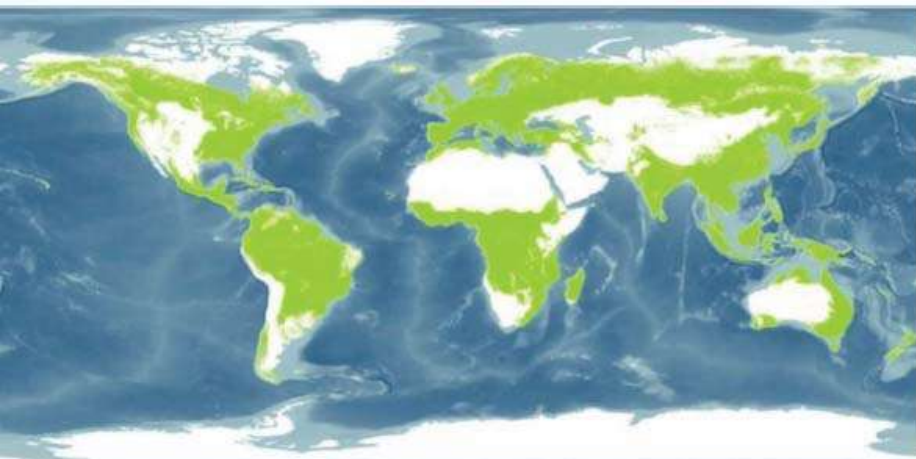
Speaker
MEGD, “Forest research and development center” УТҮГ-ЫН officer Togoldor S.



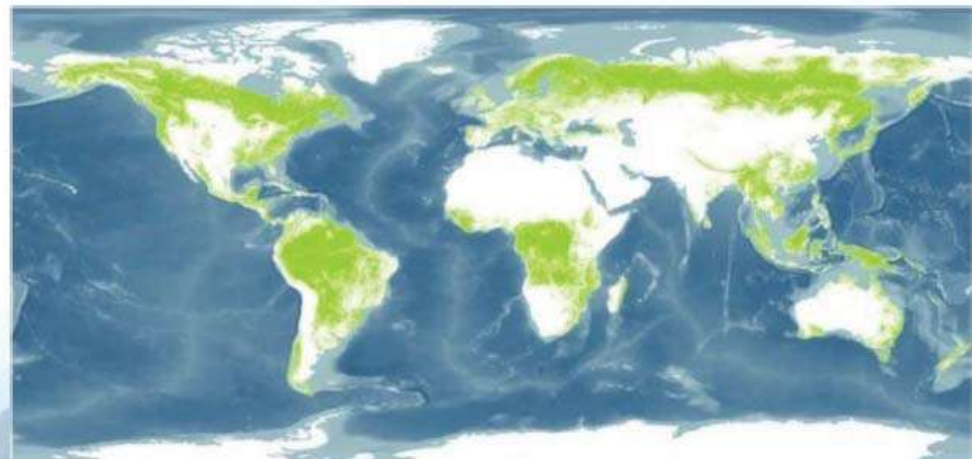
FLR at a Glance



✓ More than half of the Earth forests have been removed



Original Forest Cover

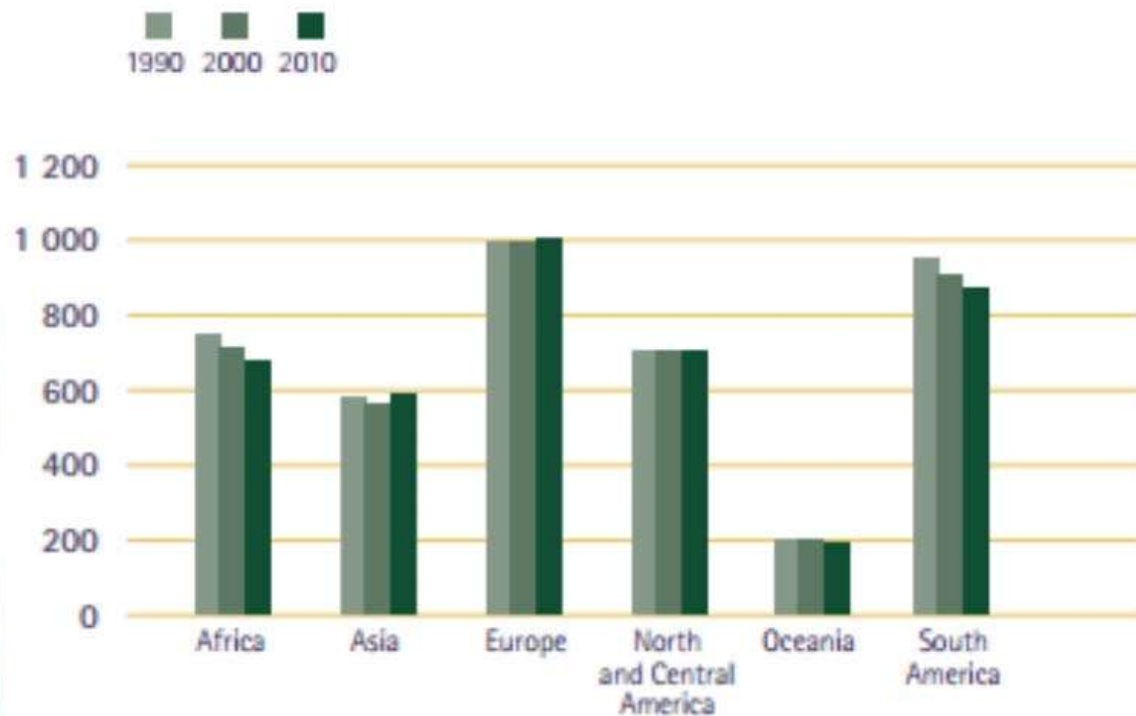


Current Forest Cover

* Source : World Resources Institute / South Dakota State University, 2009

✓ 13 million hectares of forests are lost every year (FAO, FRA 2010)

Trends in forest area, 1990-2010 (million ha)



✓ Over 1.6 billion people's livelihoods depend on forest (UN, 2011)

✓ Forests are home to more than 300 million people worldwide (UN, 2011)



CURRENT STATE OF FOREST AREA CONTRACTORS

There is a survey that 624 forest communities were owning 1843723 hectares of forest area and 59 forest area contractors 311732 hectares of forest area as of February 23, 2011.

1062 forest communities owned 2310663 hectares of forest area as of January 1, 2013 and 1082 forest communities have been owning 3074744.65 hectares of forest area as of November 1, 2013.

A number of communities increased by 20 at the end of 2013



Example from Indonesia

- Forests cover 60% of all land area;
- The world's third largest area of rainforest;
- 1.1 million hectares of forest cleaning and degradation between 2003 and 2006;
- REDD+ phase I implementation completed in October 2012.



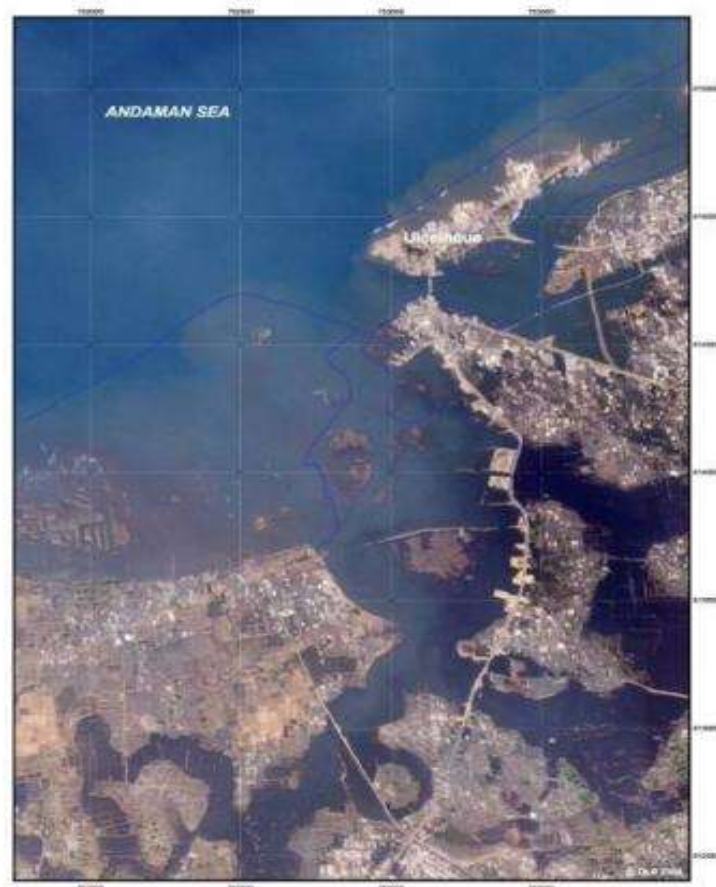
Indonesia - Banda Aceh Subset 1

IKONOS - January 10, 2003 - PRE-DISASTER IMAGE



1 : 7.500

IKONOS - December 29, 2004 - POST-DISASTER IMAGE



Center for Satellite Based Crisis Information
Emerging Mapping & Disaster Monitoring

German Remote Sensing Data Center
German Aerospace Establishment

Legend

- Nonce - Subsets
- Damaged Area
- Coastline before Tsunami

Information

This map shows a part of the northwestern island of Sumatra in the island of Sumatra (Indonesia) before and after the devastating Tsunami flood wave, which struck many coasts in the Indian Ocean on December 26, 2004. The tsunami images were taken on January 10, 2003 and December 29, 2004, respectively.

The flood wave has washed away almost the entire city, which was densely populated, and big parts of the beach used for agriculture. Banda Aceh is one of the cities, which was most seriously damaged.

Scale

0 100 200 300 400 500 600 700 800 900 1000

1 : 7.500

Projection: UTM Zone 48 N
Datum: WGS84
Datum: 1983.00

CRISP
National University of Singapore

SPACE IMAGING
Space Information, Video, Earth

Map created December 30, 2004 by: DINGCHANG
updated January 4, 2004 Version: 02



UN-REDD
PROGRAMME



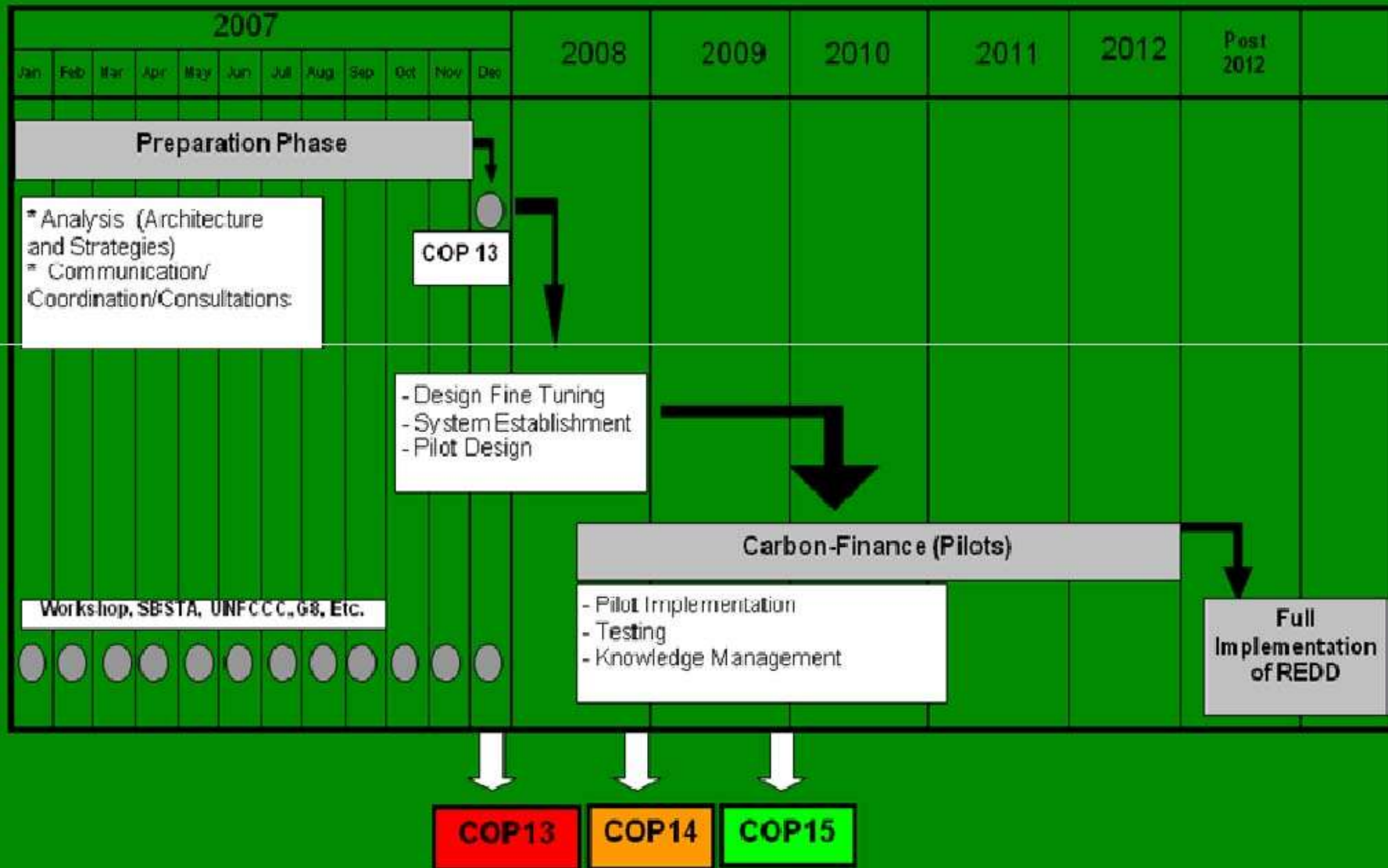
Examples from other countries

- Suitable climatic conditions;
- Higher investment into a forest sector;
- Community based projects and programs;
- Good national forest policies;
- Good reforestation and regeneration;





REDD+ Indonesia Road Map



“Appropriate management phases for forest community”

Moist climate;

Direct cooperation from police in community activities;

International organizations and NGOs support;

Higher influence from religion in community activities;

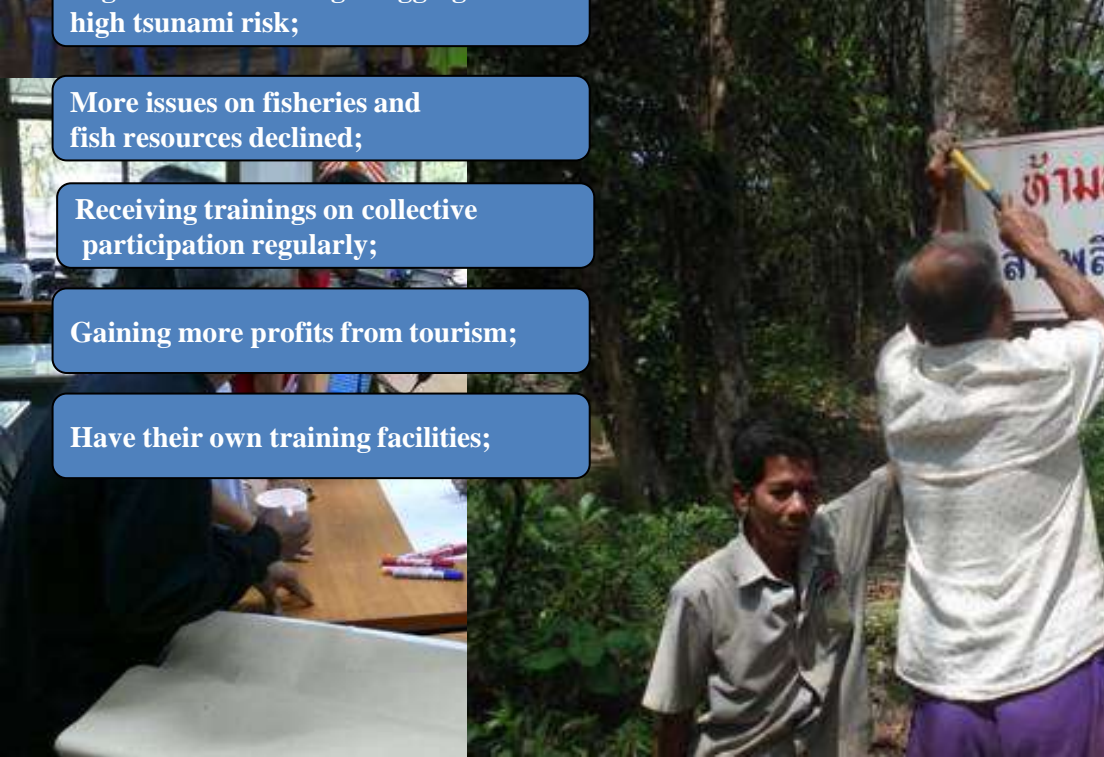
High estimates of illegal logging and high tsunami risk;

More issues on fisheries and fish resources declined;

Receiving trainings on collective participation regularly;

Gaining more profits from tourism;

Have their own training facilities;





THANK YOU FOR YOUR
ATTENTION