

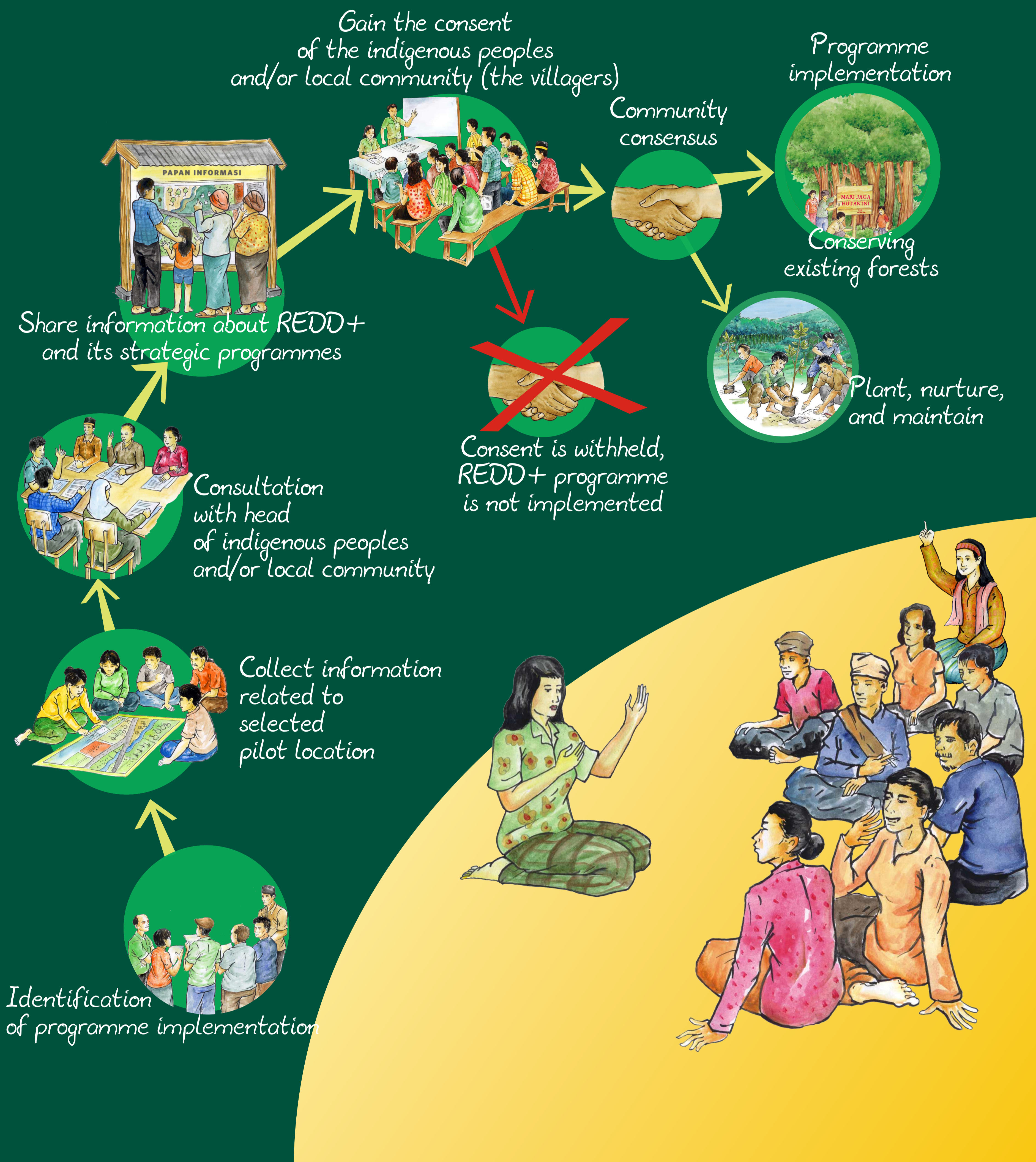


SERVICE FORESTRY
CENTRAL SULAWESI PROVINCE



DIRECTORATE GENERAL OF FORESTRY PLANNING
MINISTRY OF FORESTRY OF REPUBLIC INDONESIA

Free, Prior, Informed, and Consent CONSENSUS PROCESS



Indigenous peoples and/or local community who live in or around forest area are respected and positioned as important partners in the emissions reduction efforts. The community's role is performed through their involvement in the planning and implementation of REDD+ activities.



UN-REDD Programme Indonesia
Secretariat: Manggala Wanabakti Building Block IV, 5th Floor, Suite 525C
Jl. Jenderal Gatot Subroto, Jakarta 10270, Indonesia
Ph. +62 21 - 570 3246/65, Fax. +62 21 - 574 5748

UN-REDD Programme Indonesia Central Sulawesi
Secretariat: Service Forestry Central Sulawesi
Jl. S. Parman No. 9 Palu, Central Sulawesi
Ph. +62 451 - 421 260/61, Fax. +62 451 - 426 860

UN-REDD Programme Indonesia is a partnership among Republic of Indonesia's (RI) Ministry of Forestry, Food and Agriculture Organization (FAO), United Nations Development Programme (UNDP), and United Nations Environment Programme (UNEP).

The programme aims to support the Government of Indonesia (GoI) to progressively build a REDD+ architecture that allows a fair, equal and transparent REDD+ implementation, as well as to achieve REDD+ readiness.