



REPUBLIC OF CONGO



FREL OF REPUBLIC OF CONGO: LESSONS LEARNED

*Par Georges Claver Boundzanga
Coordonnateur National REDD – ER*

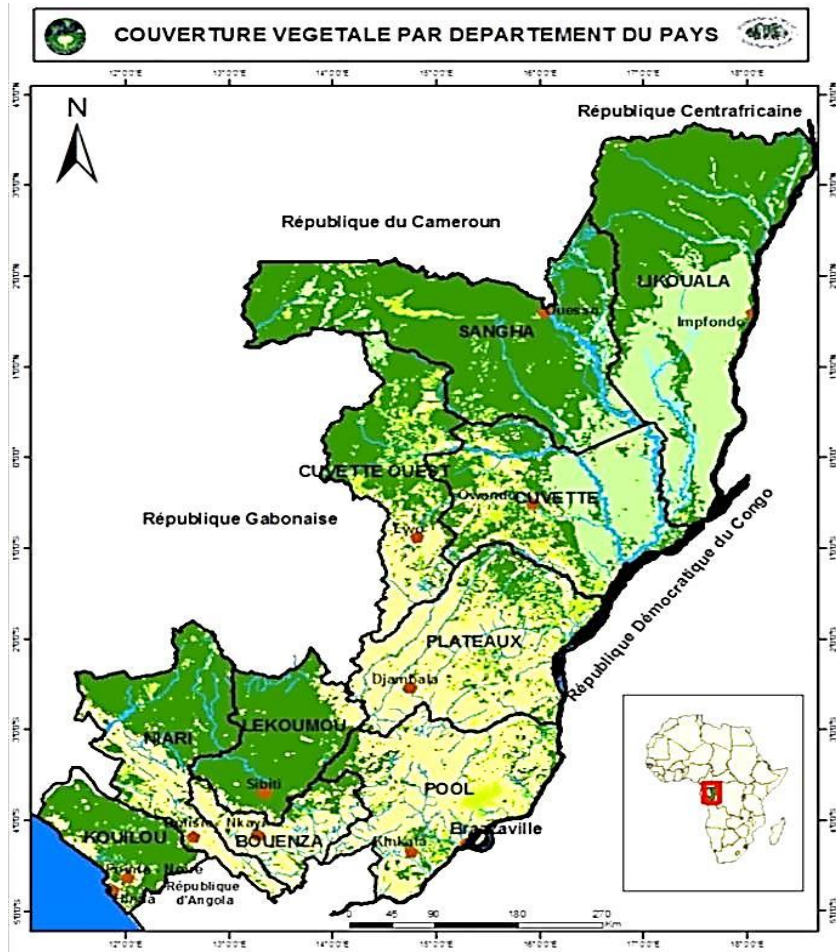


PLAN DE L'EXPOSÉ

1°- Introduction

2°- Main lessons learned

* Introduction



- Total area of the country: 342,000 km²
- Total Population: 4.8 million inhabitants
- Total forest area: 23.5 million ha (69% of the country)..

The Republic of the Congo has developed 2 FREL:

- FREL national
- FREL sub-national or juridictionnel.

The national FREL was approved by UNFCCC in July 2016.

The sub-national FREF was approved by FCPF in June 2016.

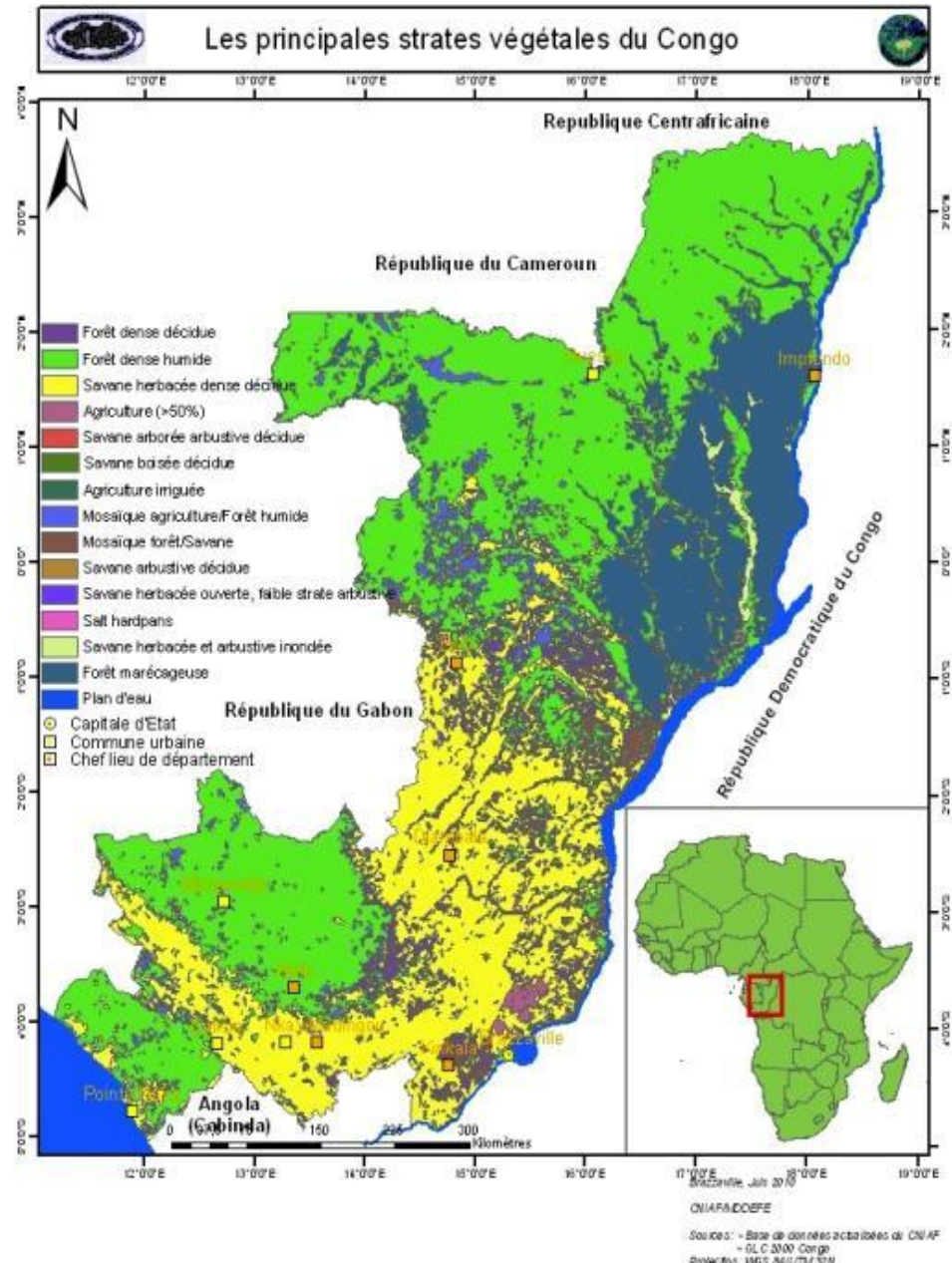
The resolution n°PC/22/2016/3 of FCPF authorized the Republic of the Congo, to beginning Phase 2 and 3 of the REDD + payment phase.

**Phase 3 : Paiements
upon performance**

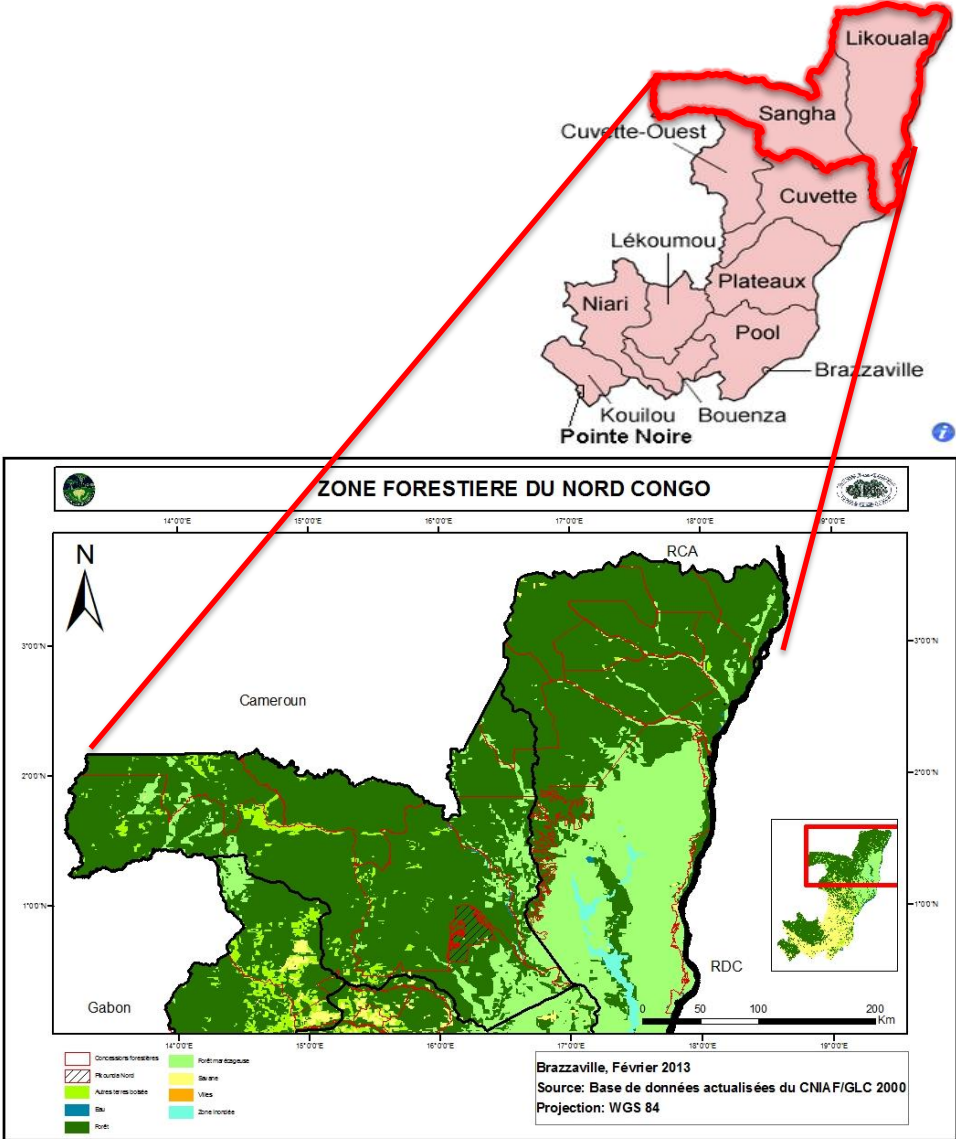
Phase 2 : Investments

Phase 1 : REDD+ Preparation

The national NERF is built on the basis of the guidelines of UNFCCC.



The sub-national FREL is built on the basis of the methodological framework of the FCPF.



The 2 FREL have included deforestation and degradation

The 2 FREL have in included Adjustment



FREL

```
graph LR; FREL[FREL] --> PD[Planned Deforestation]; FREL --> UFD[Unplanned Deforestation]; FREL --> PDE[Planned Degradation]; FREL --> UDE[Unplanned Degradation];
```

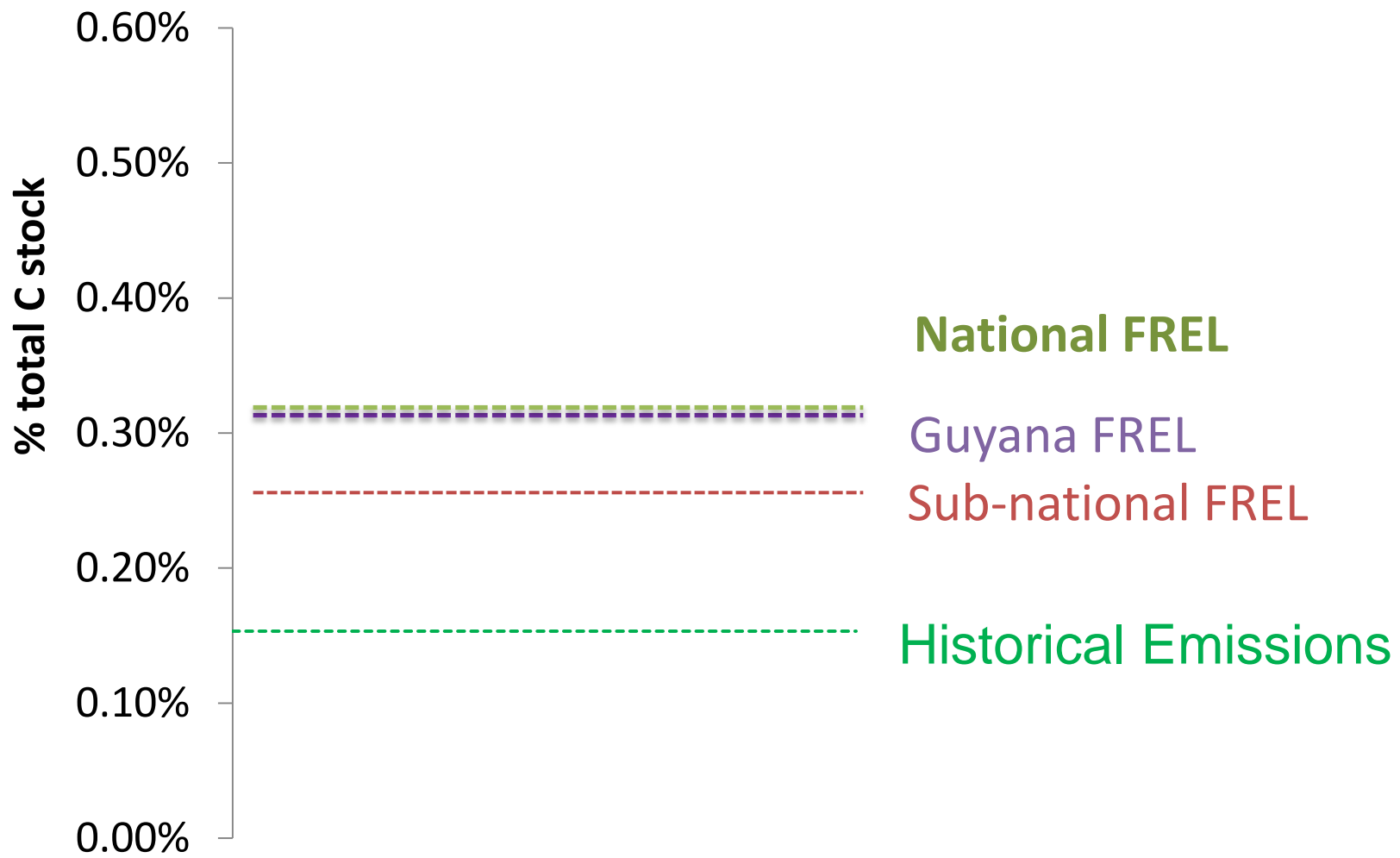
Planned Deforestation

Unplanned Deforestation

Planned Degradation

Unplanned Degradation

EMISSIONS	FREL_Nat	FREL S/Nat
HISTORICAL EMISSIONS		
Planned Deforestation	6.033.203	1.225.188
Unplanned Deforestation	316.520	2.441.659
Planned Degradation	12.858.849	990.487
Unplanned Degradation	0	1.469.881
ADJUSTMENT		
Planned Deforestation	13.611.724	3.649.255
Unplanned Deforestation	0	295.150
Planned Degradation	2.655.357	2.432.832
Unplanned Degradation	0	196.767
FREL	35.475.653	12.701.223



2°- Main lessons learned

Lesson 1:

Obligation to ensure coherence between national level data with data from the sub-national level or jurisdiction

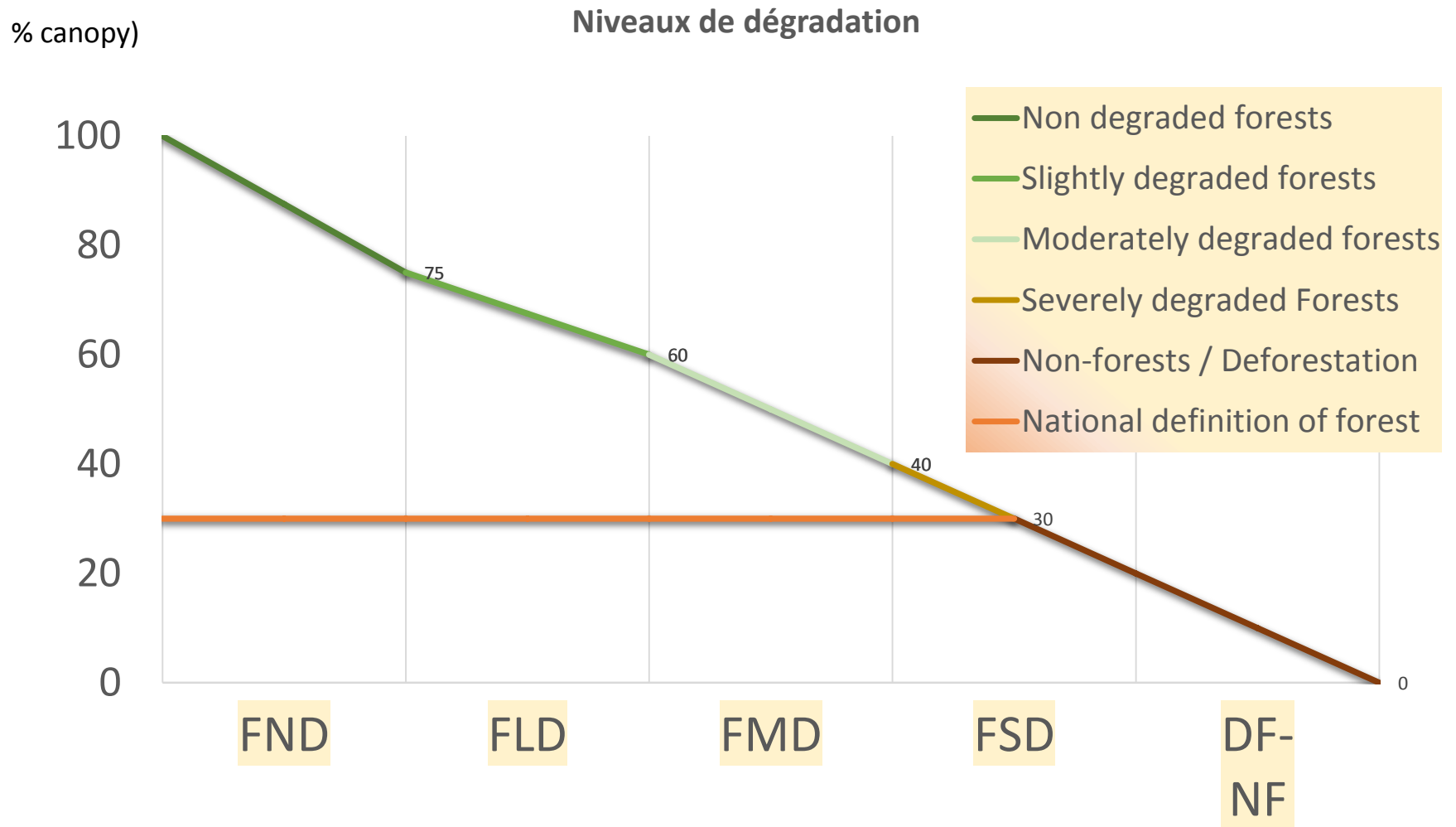
Lesson 2:

There are some differences between the UNFCCC guidelines and the FCPF methodological framework.

The adjustment of FCPF is calculated on the basis of 10% of the carbon stocks of the forest i.e. 0.1 of the carbon stock.

For the UNFCCC The adjustment is calculated on the basis of the national circumstances.

The absence of the precise definition of forest degradation

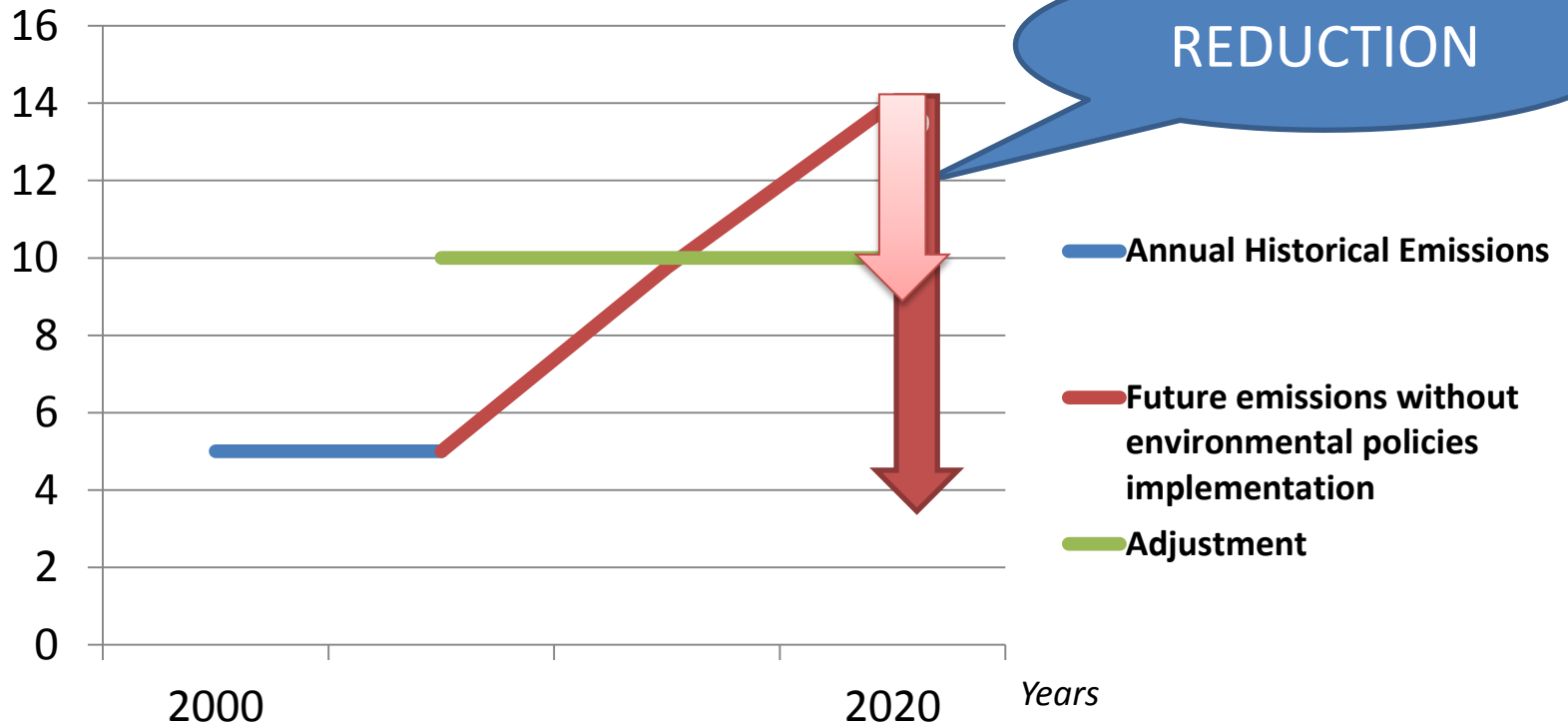


Lesson 4:

All emissions reductions will not give the payments.

Is there enough money to investment in REDD+

Carbon million tons



THANK YOU



Georges Claver Boundzanga

REDD+ National Coordinator

Tel: + 242 06 666 73 21

Email: bouzgegeredd@gmail.com

Ministry of the Forestry Economy, Republic of Congo