

The UN-REDD Programme

Asia/Pacific Knowledge Management Action Plan, 2015

Regional Knowledge Exchange on National Strategies/Action Plans

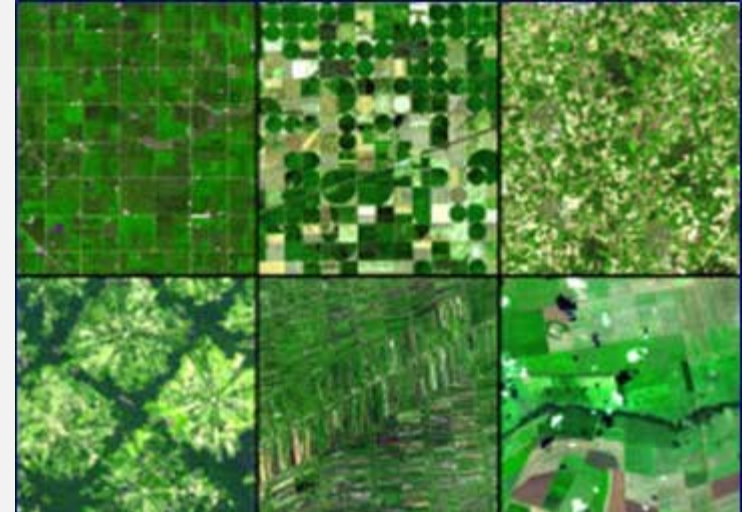
Bangkok, 29-31 July 2015

Day 1, Session 3: Approaches to Spatial Planning



What is Spatial Analysis and Planning?

- Spatial analysis is much more than map-making.
- Making a map is not taking a decision!
- Technical input to a decision-making process (planning) which is also political



How is Spatial Analysis and Planning Relevant for REDD+?

Spatial analysis can support efficient REDD+ planning that enhances benefits, reduces risks and minimizes costs

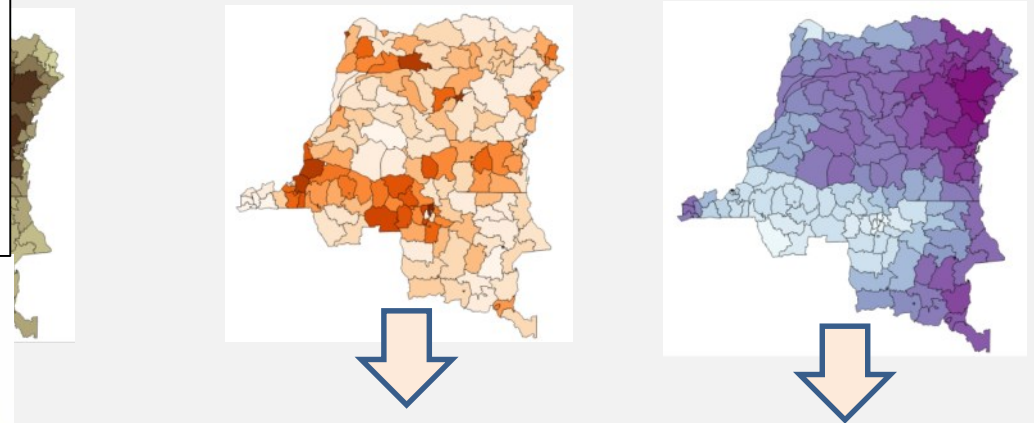
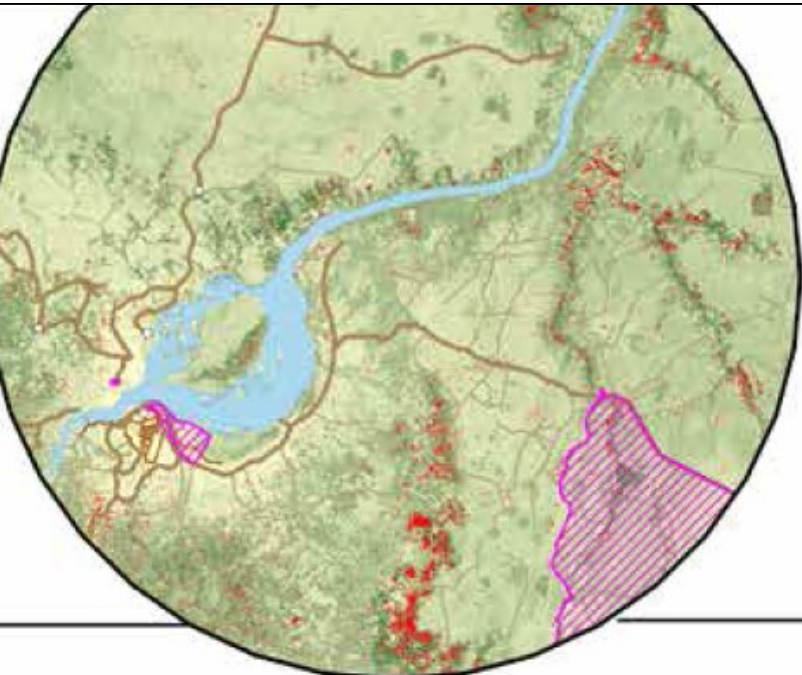
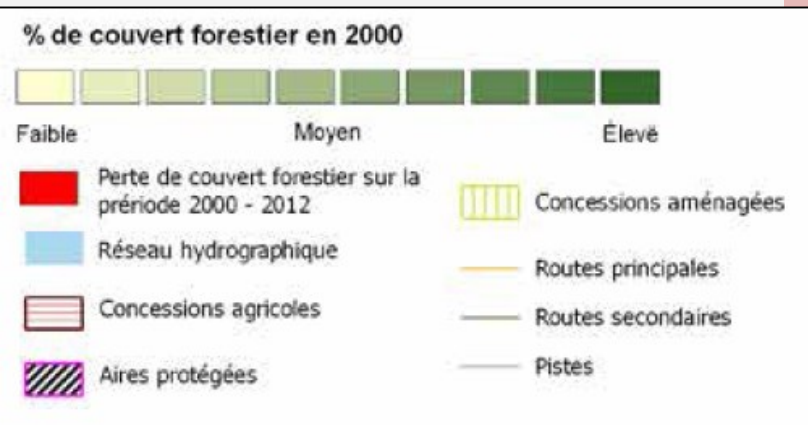
Examples of spatial analysis for REDD+ planning:

1. Prioritizing areas for REDD+ implementation;
2. Identifying areas for a given REDD+ action; and
3. Understanding the range of benefits from forests and their distribution.

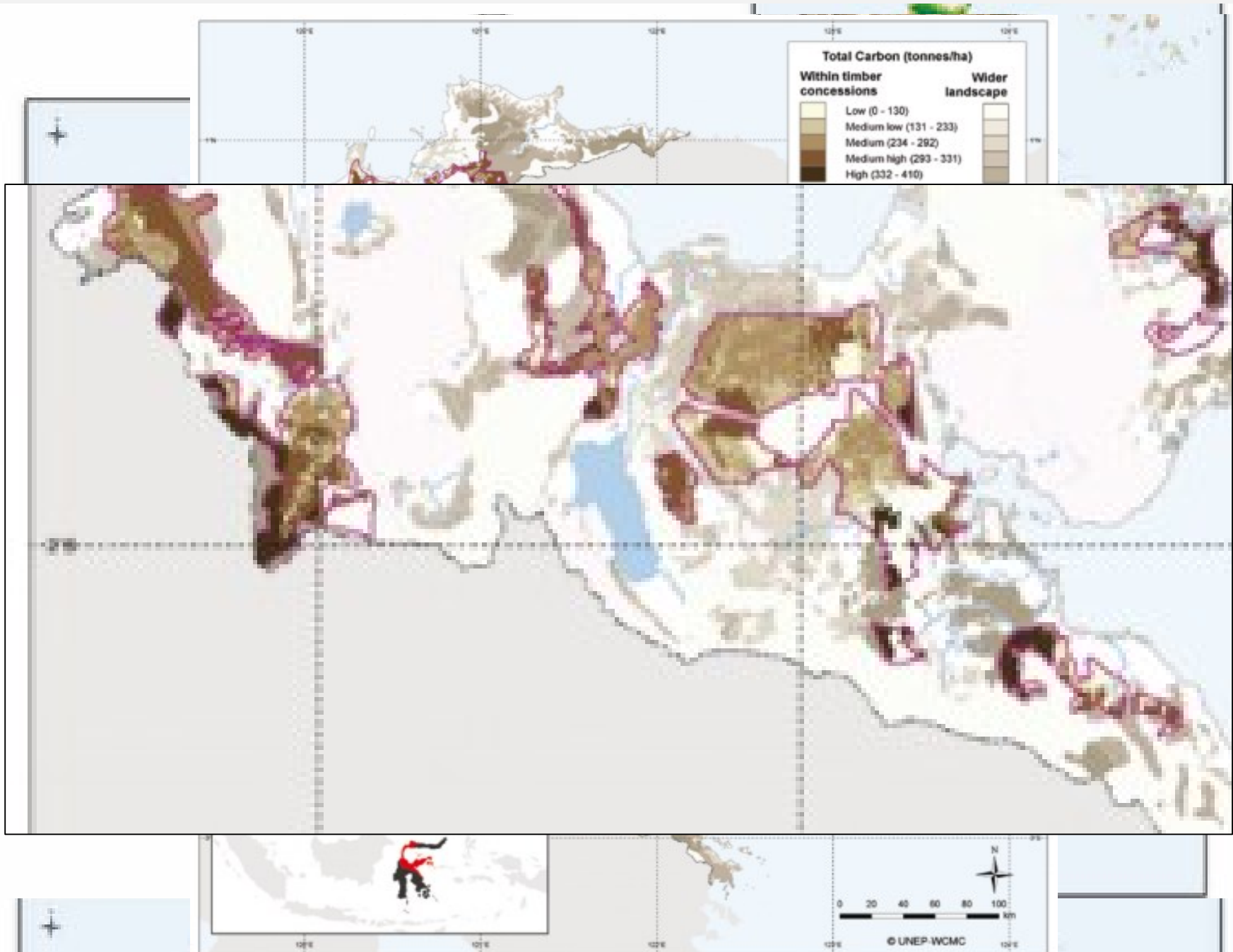


1. Prioritizing areas for REDD+ implementation

Planning of REDD+ investments in the DRC

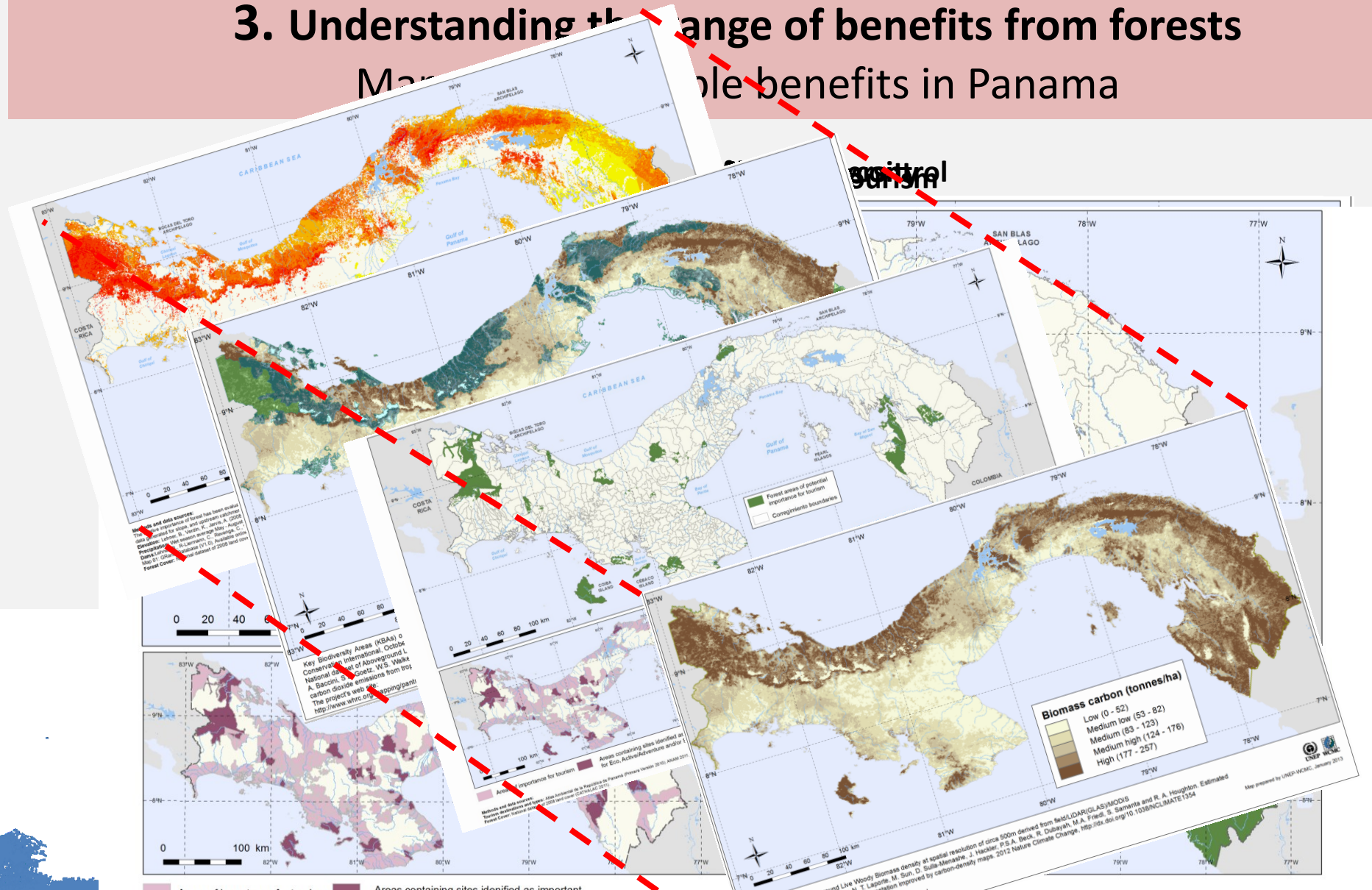


	Pressions	Bénéf
	Biodiversité	
CarHa	Taux de déforestation annuel	Richesse moyenne en espèces menacées
179.25	0.17%	2.0
64.97	0.07%	5.7
15.52	0.49%	6.6
188.98	0.06%	6.3
37.26	0.49%	1.0
169.10	0.31%	3.4
170.40	0.28%	3.0



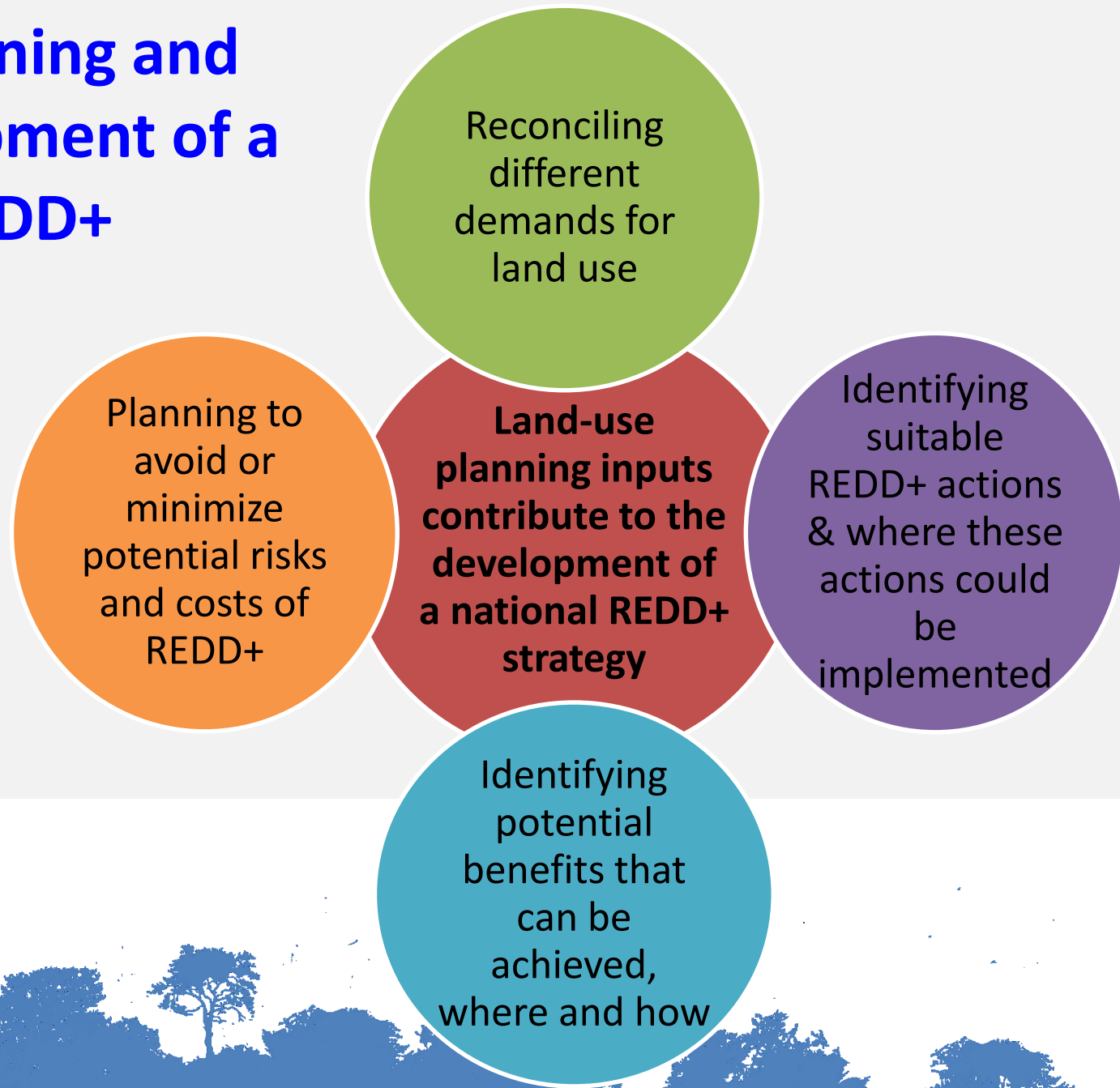
3. Understanding the range of benefits from forests

Mapping multiple benefits in Panama



Areas of importance for tourism Areas containing sites identified as important

Spatial Planning and the Development of a National REDD+ Strategy



Thank You

Blaise Bodin

Blaise.Bodin@unep-wcmc.org

UNEP – World Conservation Monitoring Centre

