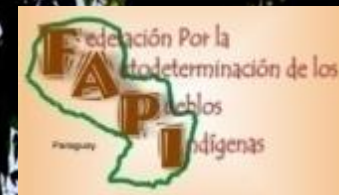


PNC ONU REDD PY

FC
FORE

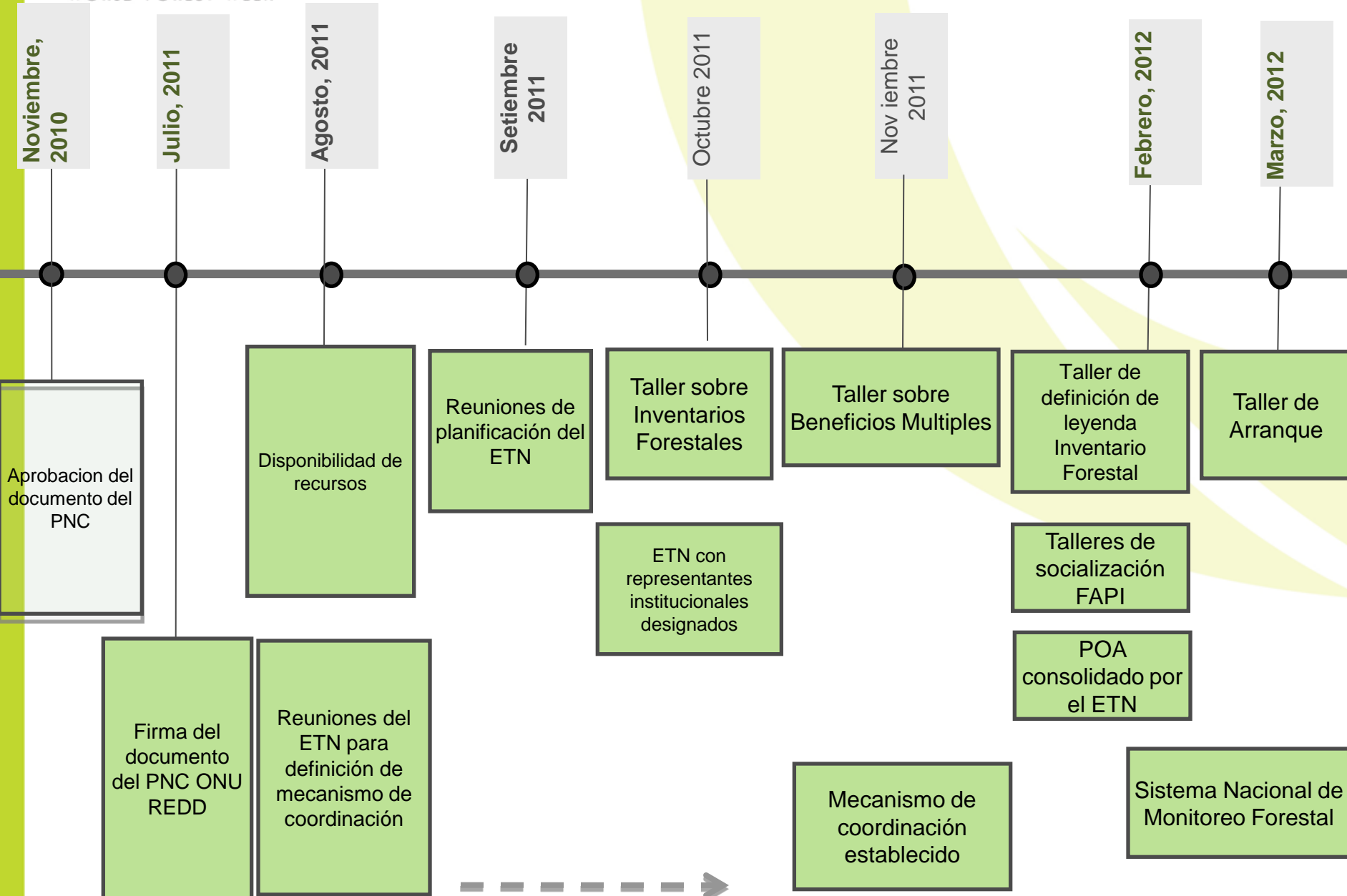


PARAGUAY PROGRAMA NACIONAL CONJUNTO



WORLD FOREST WEEK

PNC ONU REDD PY



Paraguay National Forest Monitoring System

*Building capacity to implement
REDD+ in Paraguay*

**FORESTS:
A GREEN PATHWAY
FOR HUMAN
DEVELOPMENT**

COFO 21
WORLD FOREST WEEK



Background

In order to implement REDD+ the establishment of a National Forest Monitoring System (NFMS) becomes a need.

Paraguay has giving a first important step toward the implementation of the NFMS thanks to the targeted additional support received earlier this year.

Process

Open source tools developed by FAO and the Brazilian National Institute for Space Research (INPE) are being used.

The three main partners of Paraguay's UN-REDD Programme (UNEP, FAO, and FAPI) worked together.

With the support of FAO's experts capacity building activities including:

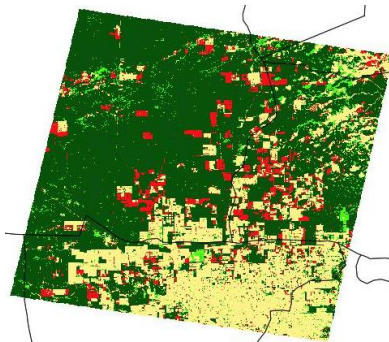
- A training workshop on GIS with the support of FAO (INFONA, SEAM, and UNA) was organized in Asuncion.
- A workshop to share among FAO and UN-REDD Programme the implementation of the tools developed by FAO and INPE.
- A training course for a delegation of Paraguayan technicians on Geoserver/geostore tools was organized in Asuncion.
- At INFONA the work is organized in such way that synergies between the National Forest Inventory activities and the National Forest Monitoring System are ensured.



Results

A web-GIS forest information portal was developed.

Information about forest cover is being produced and posted online.



Sistema Nacional de Inventario Forestal de Paraguay

Departamento: Boqueron

Estadística Zoom

Datos Producidos Durante El Taller De Formación

Estadística Zoom

Capas Capas Seleccionadas

- ▶ Capas de Base
- ▶ Áreas Administrativas
- ▶ Superficie Forestal y Cambio en la Superficie Forestal
 - Cobertura 2000
 - Cambio de la cobertura forestal entre 2000 y 2005. Primeros datos
 - Áreas Protegidas
 - Bosque Intacto
 - Catastro Alto Paraguay 2009
- ▶ Información Sobre Salvaguardias
- ▶ Otros

Nota de Información Encuesta de Satisfacción

Cambio en la Superficie Forestal

Superficie total de deforestación

| Año | Superficie (Km ²) |
|------|-------------------------------|
| 2002 | 23,500 |
| 2004 | 23,550 |

% de la superficie forestal

| Año | Superficie % |
|------|--------------|
| 2002 | 70.2 |
| 2004 | 67.5 |

Por favor, coloque el puntero del ratón sobre los gráficos para ver los valores

Paraguay National Forest Monitoring Portal - Windows Internet Explorer

http://paraguay-smf.org/

Secure Search McAfee

Paraguay National Forest Monitoring Portal

Sistema Nacional de Monitoreo Forestal de Paraguay

2005 Comentarios Estadística

Capas Capas Seleccionadas

Selected Layers

- Blue Marble
- Imágenes utilizadas en el taller
- Cambio de la cobertura forestal entre 2000 y 2005. Primeros datos
- Cobertura 2000
- Departamentos
- Limites del País

Lat: -60.43- Lon: -21.75

Capa: Deforestation

Año: 2000-2005

Nombre:

Email:

Comentarios:

Cancel Submit Query

... forestal entre 2000 y 2005.

005

005

Nota de Información Encuesta de Satisfacción

Next Steps!

- A FAO/INPE mission will take place on October to continue the capacity building process.
- The information that will be produced at the National Forest Inventory have to be integrated to the System.
- INFONA and SEAM have to ensure the continuity of the work initiated by creating the organizational structures to support the National Forest Monitoring System.

Thank you!

