

UN-REDD

P R O G R A M M E



# Bangladesh REDD+ Readiness Roadmap Outline

REDD+ Readiness Roadmap Technical  
Advisory Team

Dhaka, Bangladesh, 17<sup>th</sup> January 2012

# Roadmap Elements

UN-REDD/  
FCPF  
Readiness  
Preparation  
Plan (R-PP)  
Template

Component 1:  
Organise and Consult

Component 2: Prepare  
the REDD+ Strategy

Component  
3: Develop  
RELS/RLs

Component  
4: Design a  
Monitoring  
Systems

Bangladesh  
REDD+  
Readiness  
Roadmap

Section 1: REDD  
+ Readiness  
Management  
Arrangements

Section 2:  
Stakeholder  
Consultation  
and  
Participation

Section 3:  
Development  
and Selection of  
REDD+  
Strategies

Section 4:  
Implementation  
Framework

Section 5:  
Development of  
RELS/RLs

Section 6:  
Development of  
the Monitoring  
System

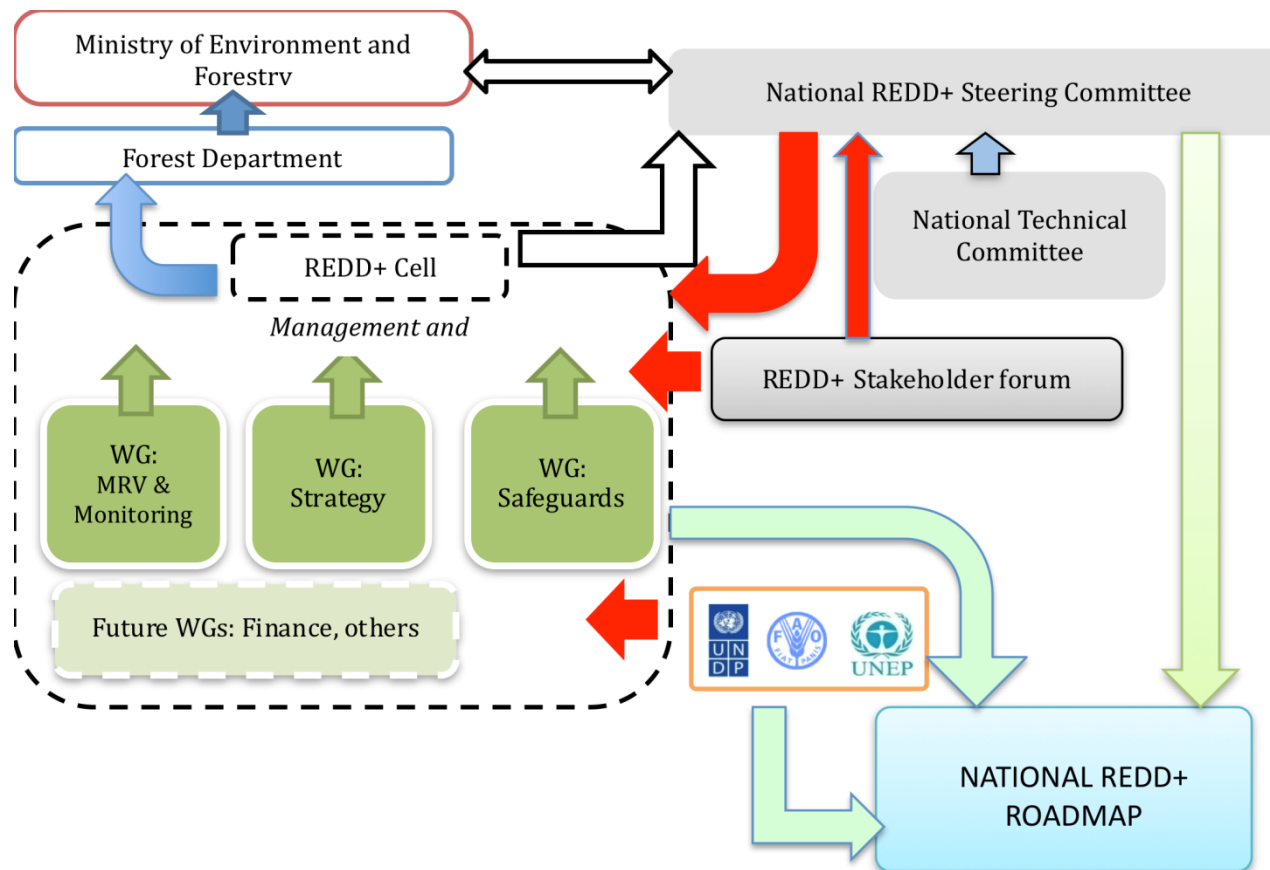
# Introduction

- **Country profile:** Geography, population, economy, brief political history, land use map, system of government,
- **Bangladesh and climate change:** Projected impacts, current actions, institutions, international engagement,
- **Bangladesh Forest Sector:** Institutional mapping, Current policies/legislation, Programmes and projects, Budget, Investment, Products/markets, Statistics (FRA and other sources)
- **Background to REDD+:** Brief summary of REDD+ mechanism, Understanding of the fundamental principles of REDD+
- **Relevance of REDD+ for Bangladesh:** Estimated future trends in forestry and land use, Summary of main issues in the forest sector (drivers of deforestation/degradation), Origin of the Roadmap process in Bangladesh and progress to date



# Section 1

## REDD+ Readiness Management Arrangements





## Section 1

# REDD+ Readiness Management Arrangements

- **Existing institutional arrangements (climate change and forests):**
  - Description of existing institutions relevant to climate change and forests
  - Institutional networks, coordination and decision-making (existing legislative and procedural arrangements),
  - Projects, programmes, NGOs and private sector involvement in forest sector (potential partners in REDD+ Roadmap),
  - Gaps in existing institutional arrangements which REDD+ Readiness must address
- **Proposed REDD+ Readiness management arrangements:**
  - Proposed institutional setup for management arrangements,
  - Adaptation of existing institutions, creation and justification of new institutions (achieved and planned) to fit the proposed arrangements
  - Composition and ToRs for: Decision-making body, implementing body, Multi-stakeholder forum, Technical Working Groups; how will they be adapted, created, developed and managed?



## Section 2: Stakeholder Consultation and Participation

### Consultation Processes to Date

- **Stakeholder mapping:**
  - *Results of past mapping*
  - *Updating for REDD+ context*
  - *Relevance of each stakeholder group for REDD+*
  - *Potential roles of each stakeholder in a REDD+ programme*
- **Practical consultation activities already conducted:**
  - *Workshops and meetings: methodologies, agendas, participants results*
  - *Rationale and objectives for past consultations, and shortcomings*
- **Lessons from past consultation processes:**
  - *including REDD+ consultations to date as well as other relevant consultation processes*



## Section 2: Stakeholder Consultation and Participation

**Planned consultation processes:** Development of a long-term, ongoing consultation strategy involving all stakeholder groups. Including:

- **Awareness raising strategy:**
  - *How each stakeholder group's specific information needs will be addressed;*
  - *Development of awareness raising materials*
  - *Other means information delivery methods (multimedia)*
  - *Extension activities*
- **Framework for stakeholder engagement:**
  - *Using REDD+ management structure to ensure neutral, transparent two-way communication during REDD+ Readiness and Implementation*
- **Consultation activities:**
  - *Workshops and consultations on management structure development*
  - *Workshops and consultations on REDD+ strategy development*



## Section 2: Stakeholder Consultation and Participation

- **Gender inclusiveness:**
  - *Activities and institutional developments to ensure gender-neutral outcomes.*
- **Compliance with principles of Free, Prior and Informed Consent (FPIC):**
  - *Obligations to FPIC in the context of REDD+.*
  - *Activities and institutional development to ensure that adherence with FPIC can be upheld and verified.*
- **Grievance Mechanism:**
  - *Rationale for a grievance mechanism for REDD+ Readiness and Implementation*
  - *Existing grievance mechanisms (government or non-govt).*
  - *Steps to develop an independent, transparent and unbiased grievance mechanism and its relationship to legislative processes.*





## Section 3: Development and Selection of REDD+ Strategies

- **Assessment of land use, forest policy and governance:**
  - Overview of the national situation with regard to deforestation and forest degradation
  - Key policies affecting the forest sector
  - Effectiveness of the forest governance system in achieving policy objectives
  - Effectiveness of past and present projects and programmes in achieving policy objectives
- **Initial assessment of drivers of deforestation and degradation:**
  - Summaries of past studies and consultations of forest sector policies and drivers of deforestation and degradation,
  - Results of past assessments, showing proximate and ultimate causes.
- **Forest governance assessment framework for REDD+:**
  - Methods for consultations and studies for identifying drivers of deforestation and degradation.
- **Preliminary workplan for assessing REDD+ strategy options:**
  - Methods for identifying potential REDD+ strategies and performing analyses of risks, costs and benefits.
- **Feasibility assessment:**
  - Methods to analyse the feasibility of potential REDD+ strategies, including the institutional capacity, infrastructure and potential livelihood and conflict-related impacts.



## Section 4: Implementation Framework

- ***Institutional Strengthening:***
  - *Institutional analysis of the REDD+ management structure and the key institutions in the structure with respect to necessary improvements in:*
    - *Governance and decision-making systems*
    - *Communication*
    - *Administration*
- ***Capacity Building:***
  - *Development of a Competency Framework for REDD+ in Bangladesh: the knowledge and skills required by each stakeholder group in order for REDD+ strategies to be successful*
  - *Design and implementation of a REDD+ Capacity Building Needs Assessment (CBNA): Identifying the gaps in skills and knowledge against the Competency Framework*
  - *Design and implementation of a REDD+ Capacity Building Action Plan: To respond to the needs identified in the CBNA*
- ***Information Management:***
  - *Developing supportive communication and information networks for REDD+, including the use of existing forest information systems at national level and international REDD+ networks.*



## Section 4: Implementation Framework

- **Policy and Legal Alignment:**
  - *Process to review the policies and legislative procedures to ensure alignment between sectors, clarity of decision-making processes*
- **Forest and Land Tenure Systems:**
  - *Forest ownership and use according to statutory and customary law*
  - *Outline a system to review statutory and customary land tenure systems for potential conflicts under a REDD+ programme.*
- **Carbon Rights:**
  - *A process for identifying the meaning of carbon rights in the REDD+ context and, if necessary, a process for allocating such rights*
- **Financial framework and REDD+ resource distribution:**
  - *Outline a study to identify and define the authority that will receive REDD+ finances*
  - *Potential partner agencies: Describe potential sources of co-financing for Bangladesh REDD+ Roadmap implementation. Describe a targeted strategy for lobbying and fundraising from each potential partner, and the agencies or bodies responsible for this role.*
  - *Resource distribution (benefit sharing): Describe a process to explore resource distribution within a REDD+ programme to ensure finances reach stakeholders that can effect the necessary behavioral change.*



## Section 4: Implementation Framework

- ***Social and Environmental Safeguards:***
  - *Outline the main risks of REDD+ programmes which safeguards are meant to address.*
  - *Describe the national and international obligations of Bangladesh to comply with the safeguards*
  - *Describe a process to develop a nationally-specific set of Social and Environmental Standards (SES) to ensure that these safeguards are complied with, including:*
    - *Formation of a Working Group for developing national indicators for SES*
    - *Development of SES indicators, including consultation processes to produce and incorporate feedback on drafts*



## Integration of the MRV REL/RL into the National REDD+ Roadmap

### General Information

Component 1: Organize and Consult

Component 2: Prepare the REDD+ Strategy

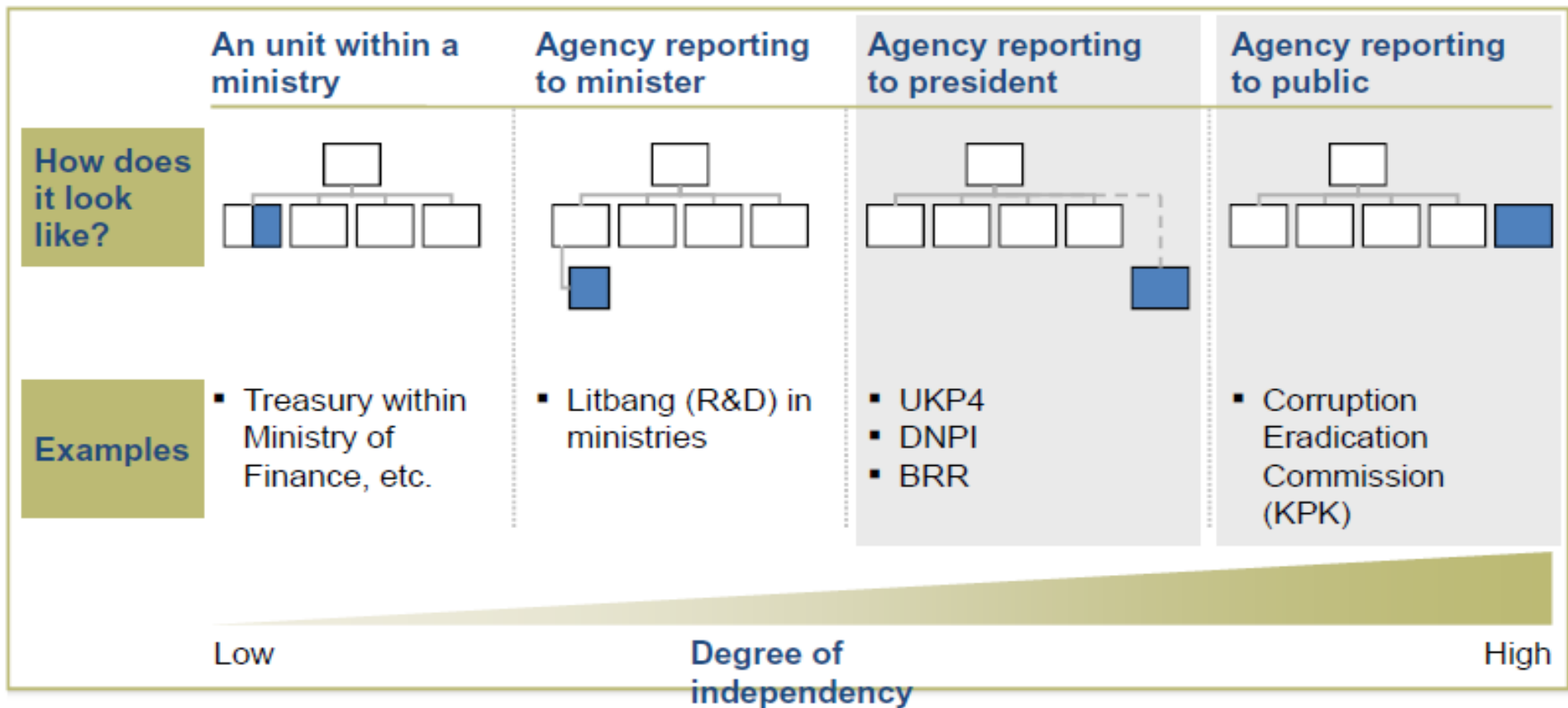
Component 3: Develop a National Forest  
Reference Emission Level and/or a Forest  
Reference Level

Component 4: Design Systems for National  
Forest monitoring and safeguards



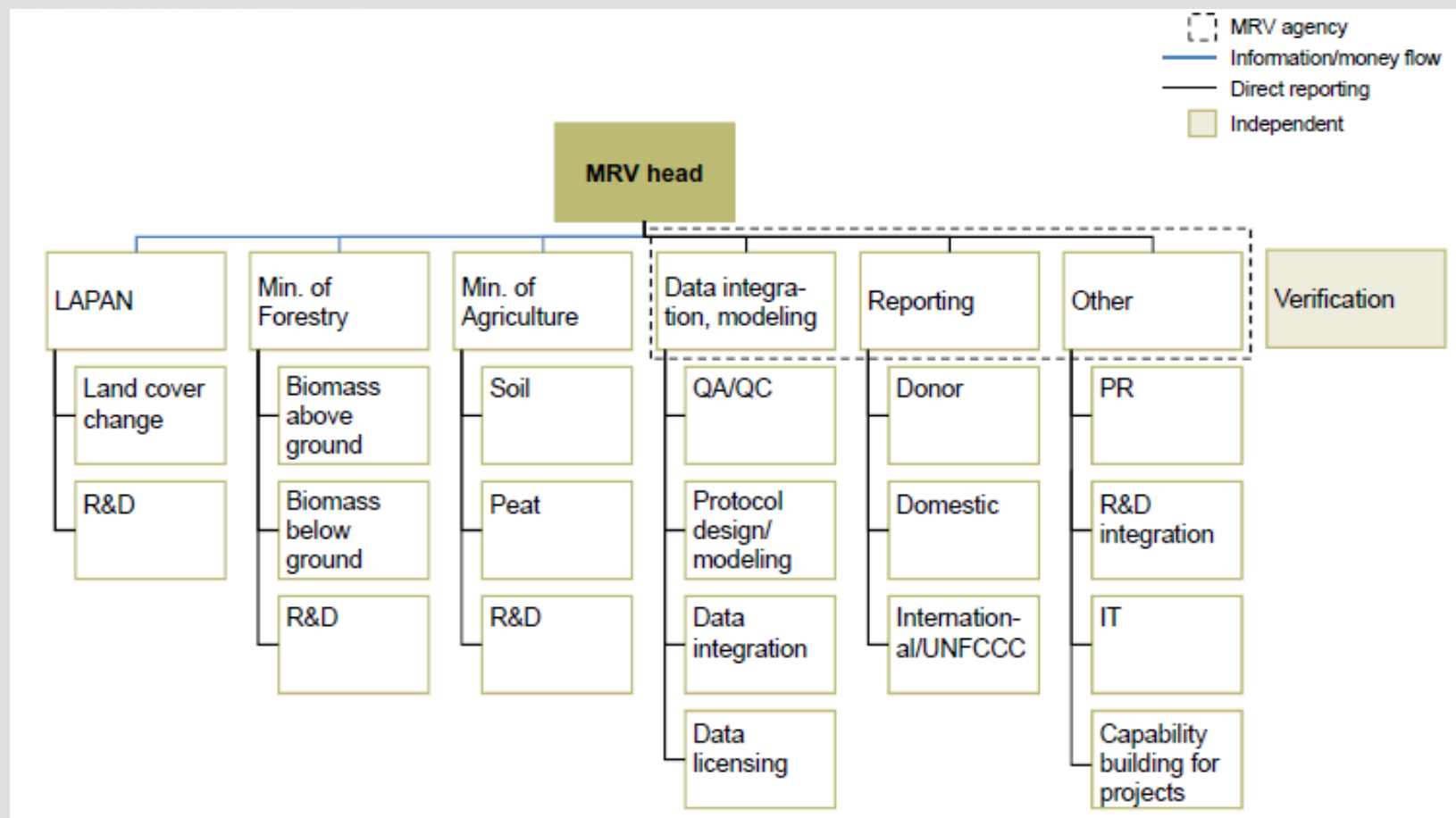
## Possible legal structures for an independent MRV agency, the case of Indonesia in 2010

 MRV agency





## Organizational design, the case of Indonesia in 2010



SATUANTUGAS PEMBENTUKAN KELEMBAGAAN REDD+, MRV agency design, November 2010,



## In 2011 MRV activities fall into seven categories, the case of Indonesia in 2010

Categories	Description	Activities
<b>Operationalize MRV agency</b>	<ul style="list-style-type: none"> <li>Responsible for monitoring, reporting and verification of emission from deforestation and degradation in Indonesia</li> </ul>	<ul style="list-style-type: none"> <li>Identify and hire employees</li> <li>Capacity building (office, IT, etc.)</li> <li>Capability building</li> <li>Establish MRV data registry (coordination with participating agencies and NGOs)</li> </ul>
<b>Land cover</b>	<ul style="list-style-type: none"> <li>Activity data, which shows changes in forest and peat cover over time</li> </ul>	<ul style="list-style-type: none"> <li>Refine and verify annual land cover change 1999-2009 through ground truthing and compare with other existing data sources, such as ICRAF land cover change 1990-2005</li> <li>Develop methodology to monitor degradation</li> </ul>
<b>Biomass above/below ground</b>	<ul style="list-style-type: none"> <li>Biomass above/below ground, dead wood, and litter</li> </ul>	<ul style="list-style-type: none"> <li>Protocols for field survey data collection: Above-ground biomass, litter, dead wood, below-ground calculation, biodiversity</li> <li>Collect data from field surveys: 300 plots for model building, 100 plots for internal verification</li> <li>Potential refinement of remote sensing</li> </ul>
<b>Peatlands</b>	<ul style="list-style-type: none"> <li>Forest and non-forest peat areas need to be determined in terms of land cover, depth and carbon content</li> </ul>	<ul style="list-style-type: none"> <li>Collect data from roughly 50 sites around Indonesia (Papua, Kalimantan and Sumatra)               <ul style="list-style-type: none"> <li>8 locations</li> <li>~6 sites per location</li> </ul> </li> <li>Involve universities etc. to establish further data plots</li> <li>Process data</li> </ul>
<b>Data integration and reference emission level</b>	<ul style="list-style-type: none"> <li>Is used to as reference for future emission levels to determine verified emission savings</li> </ul>	<ul style="list-style-type: none"> <li>Integrate data</li> <li>Define econometric country specific data, such as GDP, population growth, which can determine business as usual emission scenario</li> <li>Start define preliminary REL</li> </ul>
<b>Ongoing monitoring</b>	<ul style="list-style-type: none"> <li>Ongoing monitoring to determine annual emissions from deforestation and degradation</li> </ul>	<ul style="list-style-type: none"> <li>Annual land cover change</li> <li>Live monitoring: bi-weekly land cover changes</li> <li>Ongoing biomass and peatland changes (frequency TBD)</li> </ul>
<b>Reporting and verification</b>	<ul style="list-style-type: none"> <li>Verify and report annual emissions towards national and international stakeholders</li> </ul>	<ul style="list-style-type: none"> <li>Develop communication platform (website)</li> <li>Assess potential reporting structures</li> <li>Market search on verification partners</li> </ul>

PRELIMINARY

SATUANTUGAS PEMBENTUKAN KELEMBAGAAN REDD+, MRV agency design, November 2010,





## The Philippine National REDD+ Strategy (PNRPS) presents a strategy for over 10-year time horizon (2010-2020)

### The Philippine National REDD-plus Strategy

Prepared by The Philippines REDD-plus Strategy Team  
Spearheaded by Department of Environment and Natural Resources – Forest Management Bureau  
and CoDe REDD-plus Philippines

#### List of participating institutions:

AnthroWatch  
Ateneo School of Government  
Climate Change Commission  
Conservation International - Philippines  
DENR-Ecosystems Research Development Bureau (ERDB)  
DENR- Forest Management Bureau (FMB)  
Environmental Legal Assistance Center (ELAC)  
Environmental Leadership Training Initiatives (ELTI)  
Fauna and Flora International (FFI)  
Forestry Development Center  
DOST-Forest Products Research and Development Institute (FPRDI)  
Go Organic Mindanao (GOM)  
Greenpeace Southeast Asia  
IUCN National Committee of the Netherlands (IUCN NL)  
Institute for the Development of Educational and Ecological Alternatives (IDEAS) Inc.  
Kitanglad Integrated NGOs  
Kalahan Educational Foundation  
Municipal Mayor's Office of Quezon, Palawan  
Nagkakaisang Mga Tribu ng Palawan, Inc (NATRIPAL)  
National Mapping and Resource Information Authority (NAMRIA)  
National CBFM Peoples Organizations Federation  
Non-Timber Forest Products- Exchange Programme for South and Southeast Asia (NTFP-EP)  
National Commission on Indigenous Peoples (NCIP)  
Palawan Council for Sustainable Development (PCSD)  
Philippine Council for Agriculture, Forestry and Natural Resources Research and Development (PCARRD)  
Philippine Federation for Environmental Concerns  
DENR-Protected Areas and Wildlife Bureau-DENR (PAWB)  
Provincial Technical Working Group on Community-Based Forest Management in Southern Leyte  
Society of Filipino Foresters (SFF)  
Technical Working Group Adaptation to Climate Change & Conservation in Biodiversity (ACCBio) -  
Upholding Life and Nature (ULAN)  
Women's Initiatives for Society, Culture, and Environment, Inc (WISE, Inc.)  
World Agroforestry Center, ICRAF-Philippines

Details on all the related consultations and participants are available in Appendix A.

### Objectives:

>> to develop a multistakeholder REDD+ strategy

>> to facilitate REDD+ development

>> Guide REDD+ discussions within the development of the National Framework Strategy and Program on Climate Change

>> Inform international donors and investors of country intentions

>> Provide national resources for institutions interested in REDD+ and stakeholder engagement



## Institutional arrangements LULUCF sector in Mexico

### Activity data

**INEGI** produces national land cover and land use cartography

**Conafor** monitors land use changes annually, forest fire monitoring and management

**Semarnat** issues management permits

### Emission factors

**Conafor** undertakes national forest inventory

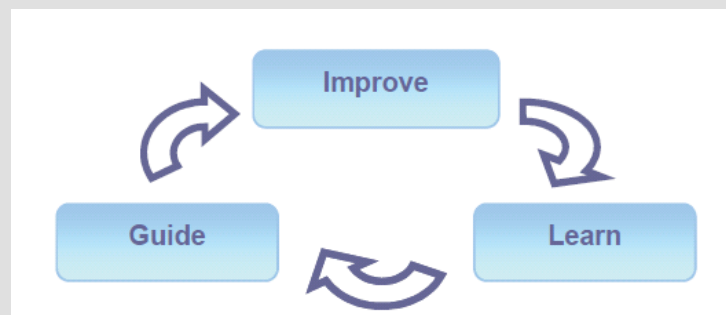
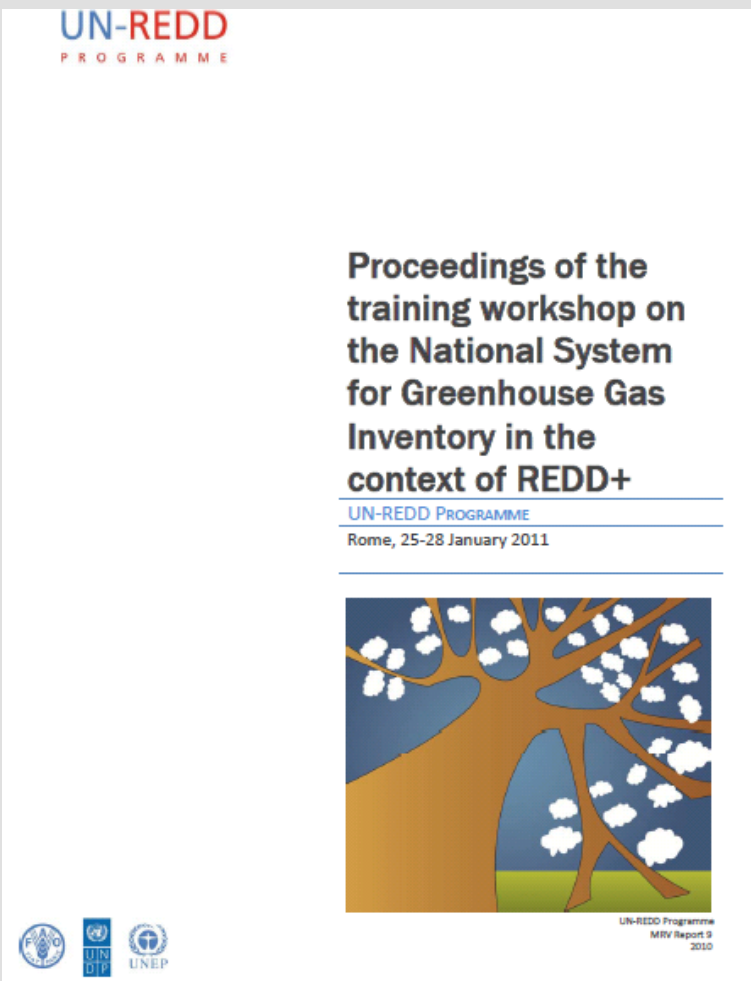
### GHG Inventory

**INE** established methodology and commissions studies and undertake QC

**Research** institutes integrate information and produce GHG inventory data for LULUCF



## Possible legal structures for an independent MRV agency, the case of Indonesia in 2010



Approach for continuous  
inventory improvement

**Thank you for your attention**

A thick red horizontal bar that tapers to the right, positioned below the main text.