



Forest & Land Use in Papua New Guinea -2013

Gewa Gamoga
a/REDD & Climate Change Manager
PNG Forest Authority
Papua New Guinea

**ASIA-PACIFIC
FORESTRY WEEK 2016**
GROWING OUR FUTURE!

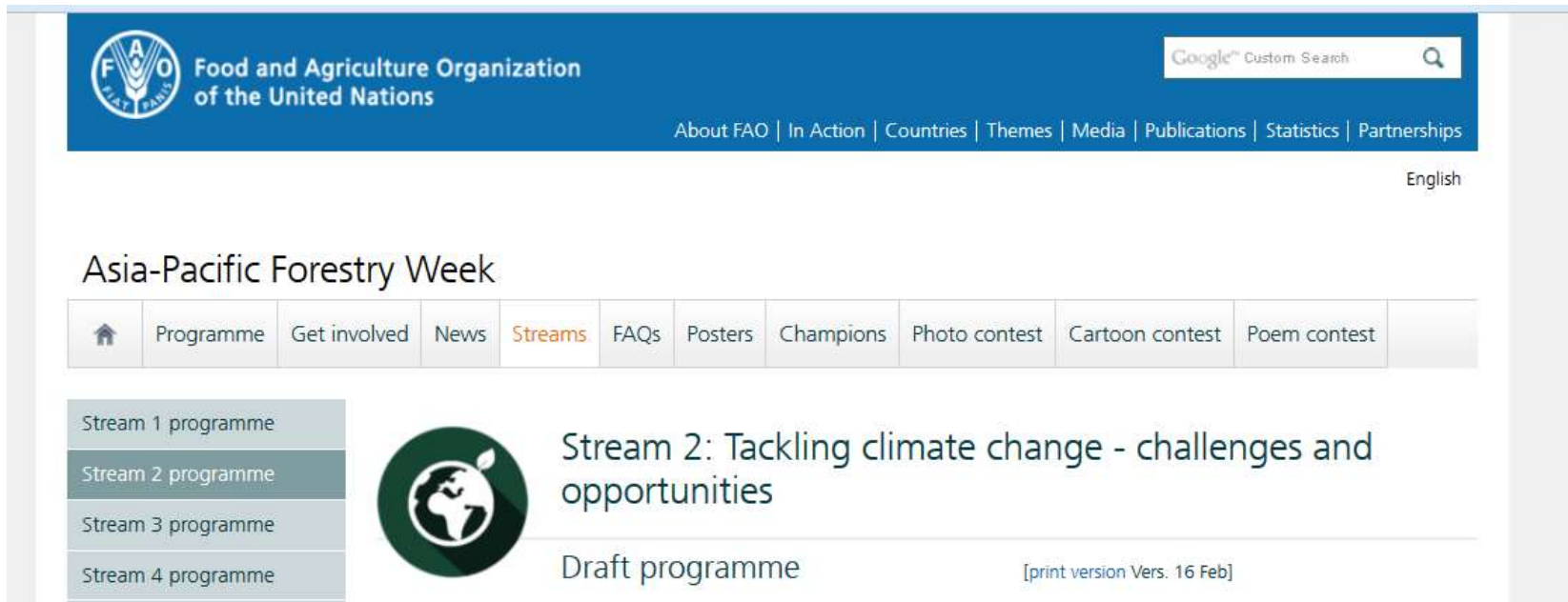


Example of using Collect-Earth

Forest and land use in PNG 2013,

Gewa Gamoga

<http://www.fao.org/about/meetings/asia-pacific-forestry-week/streams/stream-2-programme/en/>




The screenshot shows the website for the Asia-Pacific Forestry Week. At the top, there is a blue header with the FAO logo and the text "Food and Agriculture Organization of the United Nations". To the right of the logo is a search bar labeled "Google™ Custom Search". Below the header is a navigation menu with links: "About FAO", "In Action", "Countries", "Themes", "Media", "Publications", "Statistics", and "Partnerships". The language is set to "English".

Asia-Pacific Forestry Week

Home Programme Get involved News **Streams** FAQs Posters Champions Photo contest Cartoon contest Poem contest

- Stream 1 programme
- Stream 2 programme**
- Stream 3 programme
- Stream 4 programme

 Stream 2: Tackling climate change - challenges and opportunities

Draft programme [print version Vers. 16 Feb]

Presentation Outline

1. Papua New Guinea in Brief
2. Methodology
3. Findings
4. Next steps
5. Key Message

PNG in Brief



1. PNG is the eastern part of the Island of New Guinea
2. This Island is said to embrace the third largest mass of undisturbed tropical rainforests following Amazon and the Congo Basin with vast bio-diversity.
3. Fauna is significantly different from Asia
4. We have between 5-10% of the world's plant and animal species
5. World's smallest frog and parrot, and world's largest butterfly
6. 97% land is customary own
7. 85% live in Rural areas



Methodology



Open Foris is a set of free and open-source software tools that facilitates flexible and efficient data collection, analysis and reporting.

The initiative is a collaborative effort of numerous public and private institutions and it is hosted by the Forestry Department, FAO.



Collect

Easy and flexible survey design and data management



Collect Mobile

Intuitive data collection and validation in the field



Collect Earth

Innovative land assessment through freely available satellite imagery



Calc

Efficient and collaborative data analysis and results dissemination



Geospatial Toolkit

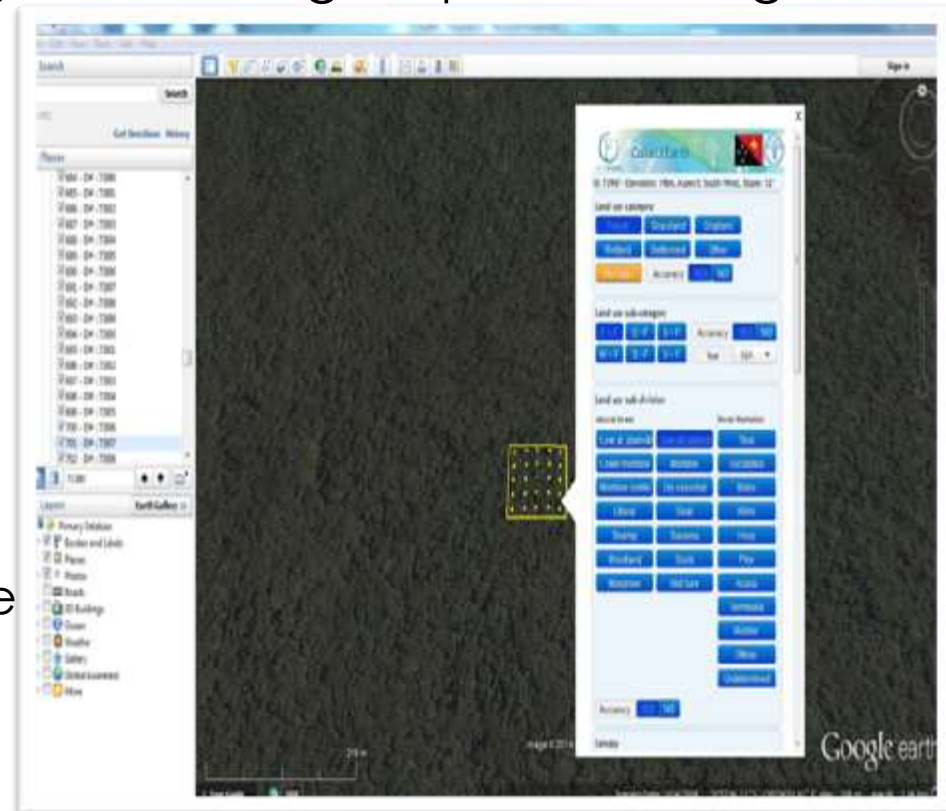
Powerful command-line utilities for processing geospatial data

Collect Earth

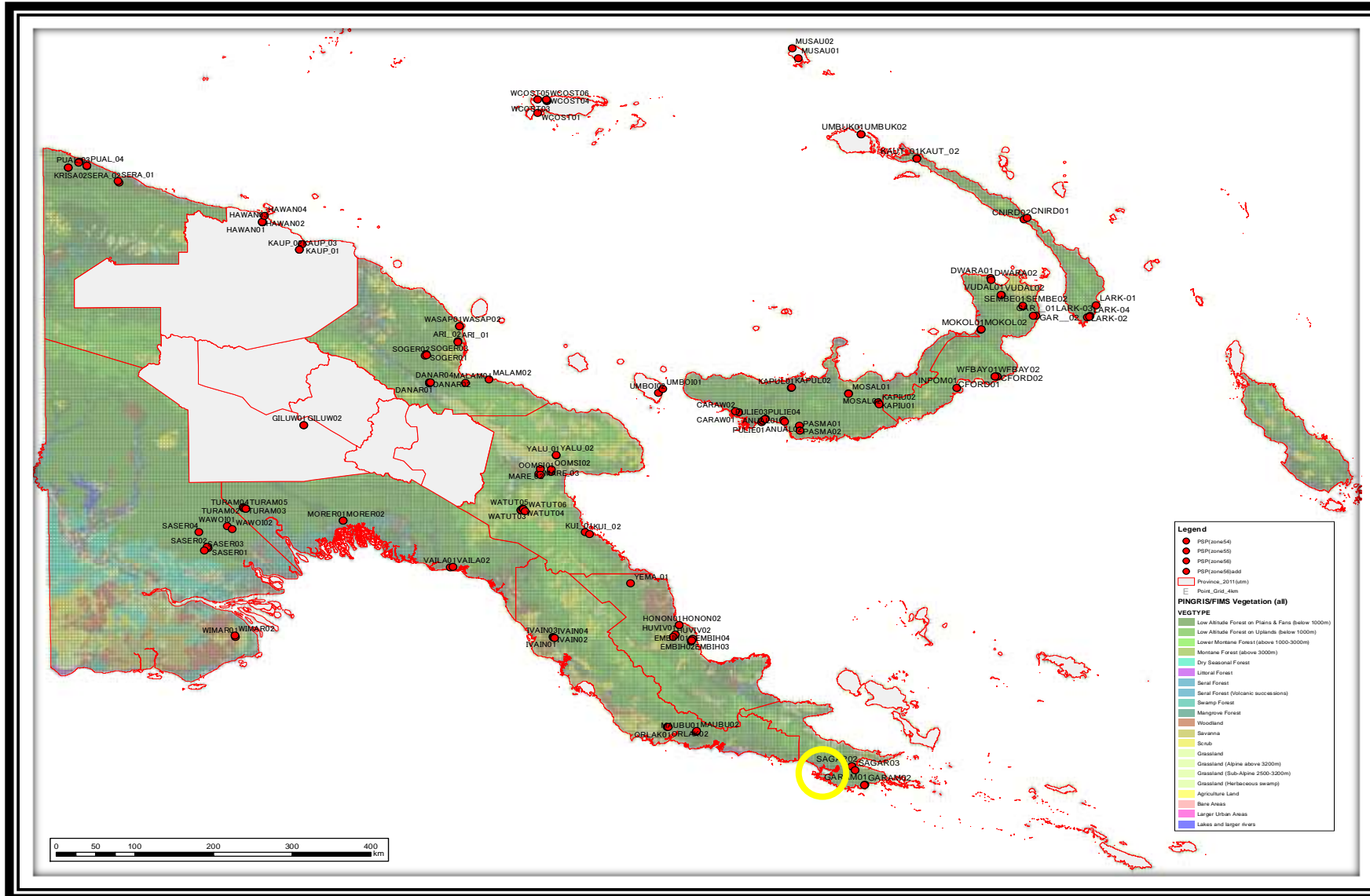
- ✓ A user-friendly GIS and remote sensing tool developed by FAO
- ✓ Uses a Google Earth interface and
- ✓ Facilitates the interpretation of high and medium spatial resolution imagery in Google Earth, Bing Maps and Google Earth Engine.

Sampling Intensity for PNG

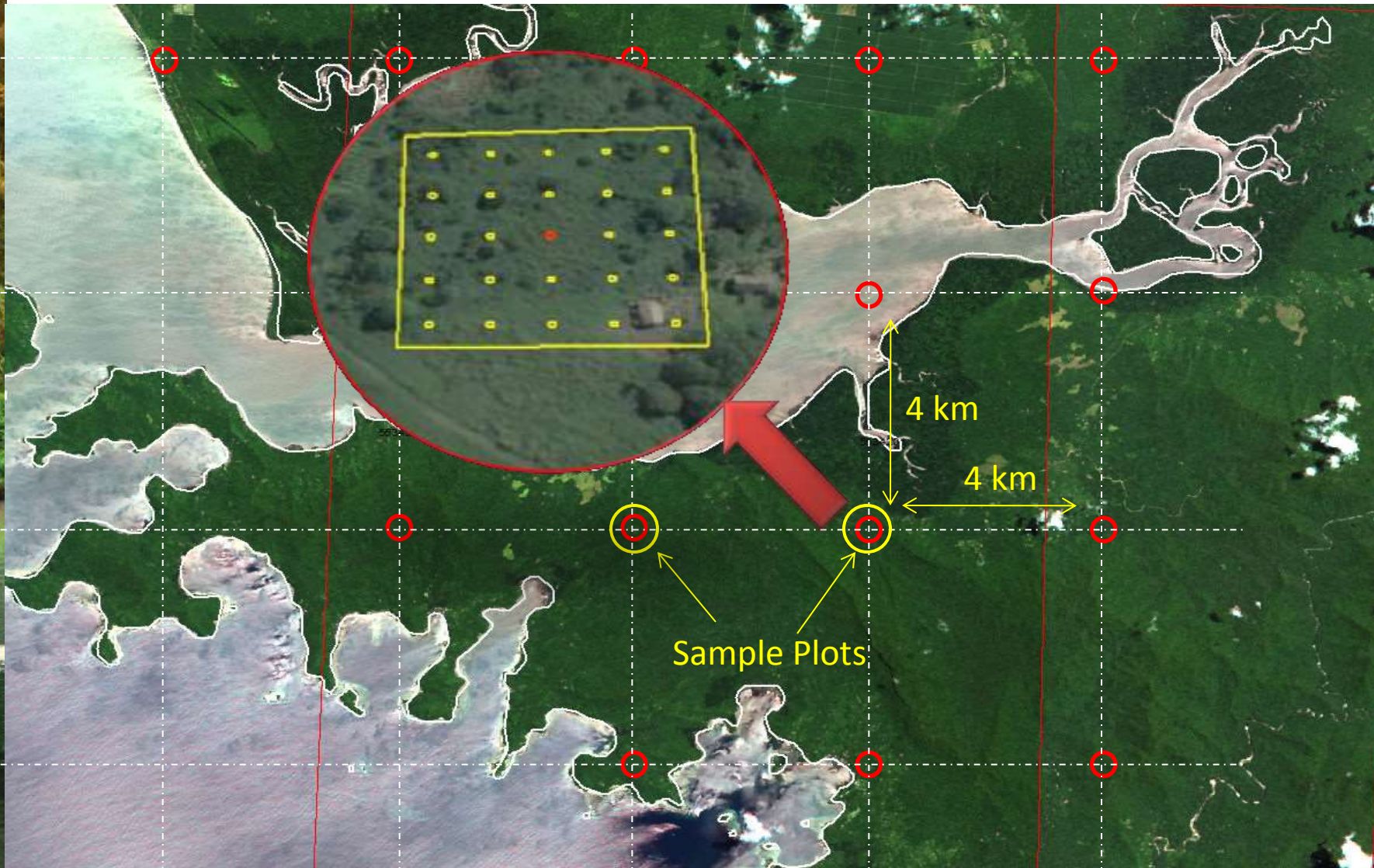
- ❑ Point Sampling
- ❑ 0.04 X 0.04 degree grid (4.44 X 4.44 km)
- ❑ 0.02 X 0.02 degree grid for the smallest three provinces
- ❑ 25,279 “plots”



4x4 km systematic grid over laid over PNG



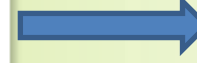
Landscape detail of Rapid Eye image coverage with sample plots distribution



Land use









Land use
subdivision



Human
impact

IPCC guideline

	Forest	→
	Grassland	
	Cropland	
	Wetland	
	Settlement (Village, large settlement, Infrastructure)	
	Other (river, barren soil, sand soils, landslides, rock, lake)	

12 forest types in PNG

1. Low altitude forest on plain & fans
2. Low altitude forest on uplands
3. Lower montane forest
4. Montane forest
5. Swamp forest
- ⋮
12. Montane coniferous forest
13. Forest Plantations



Forest & land use

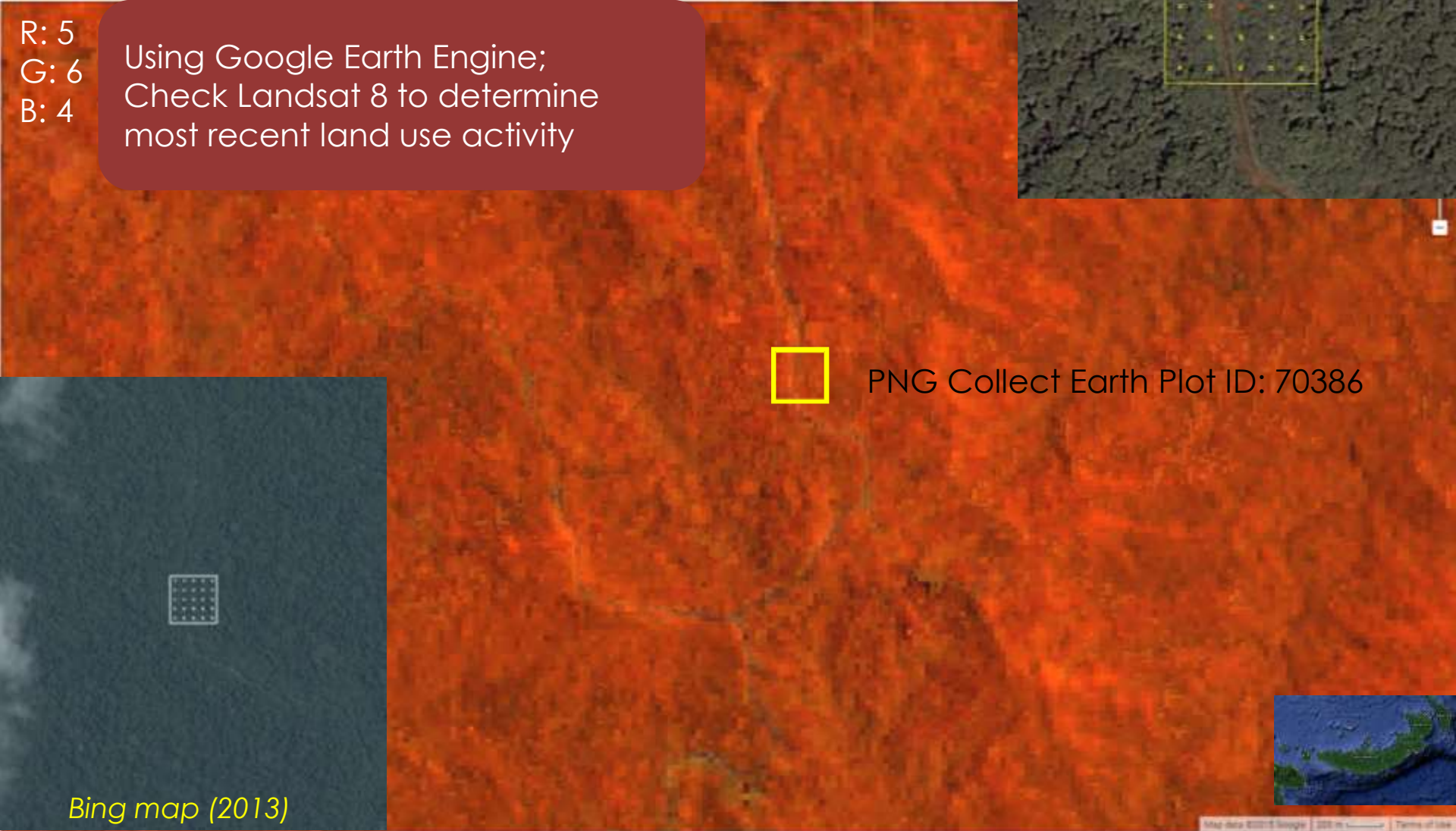
Landsat 8 - 2015

Google Earth (2011)



R: 5
G: 6
B: 4

Using Google Earth Engine;
Check Landsat 8 to determine
most recent land use activity



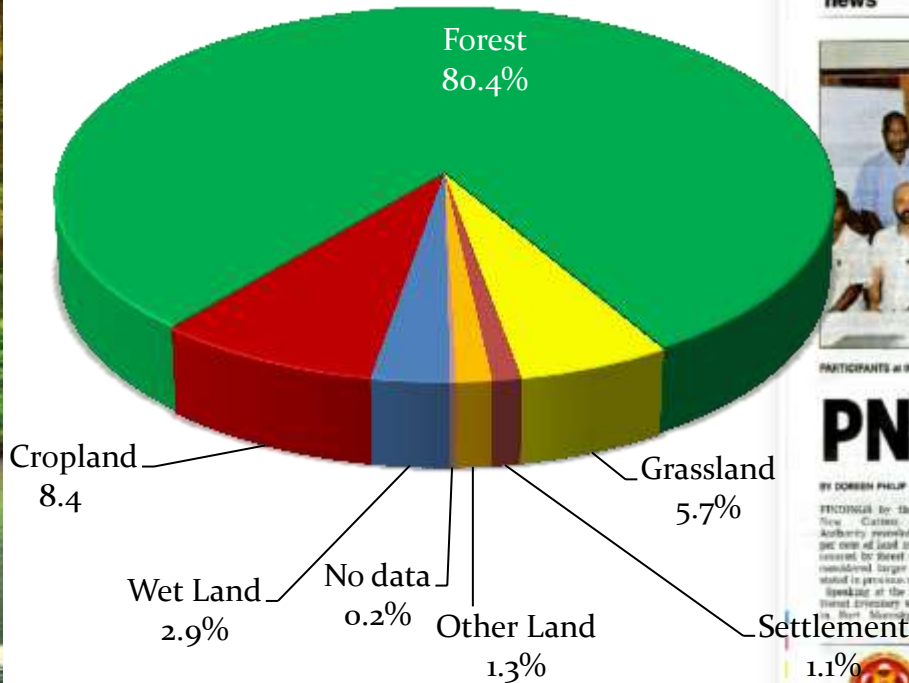
PNG Collect Earth Plot ID: 70386



Bing map (2013)



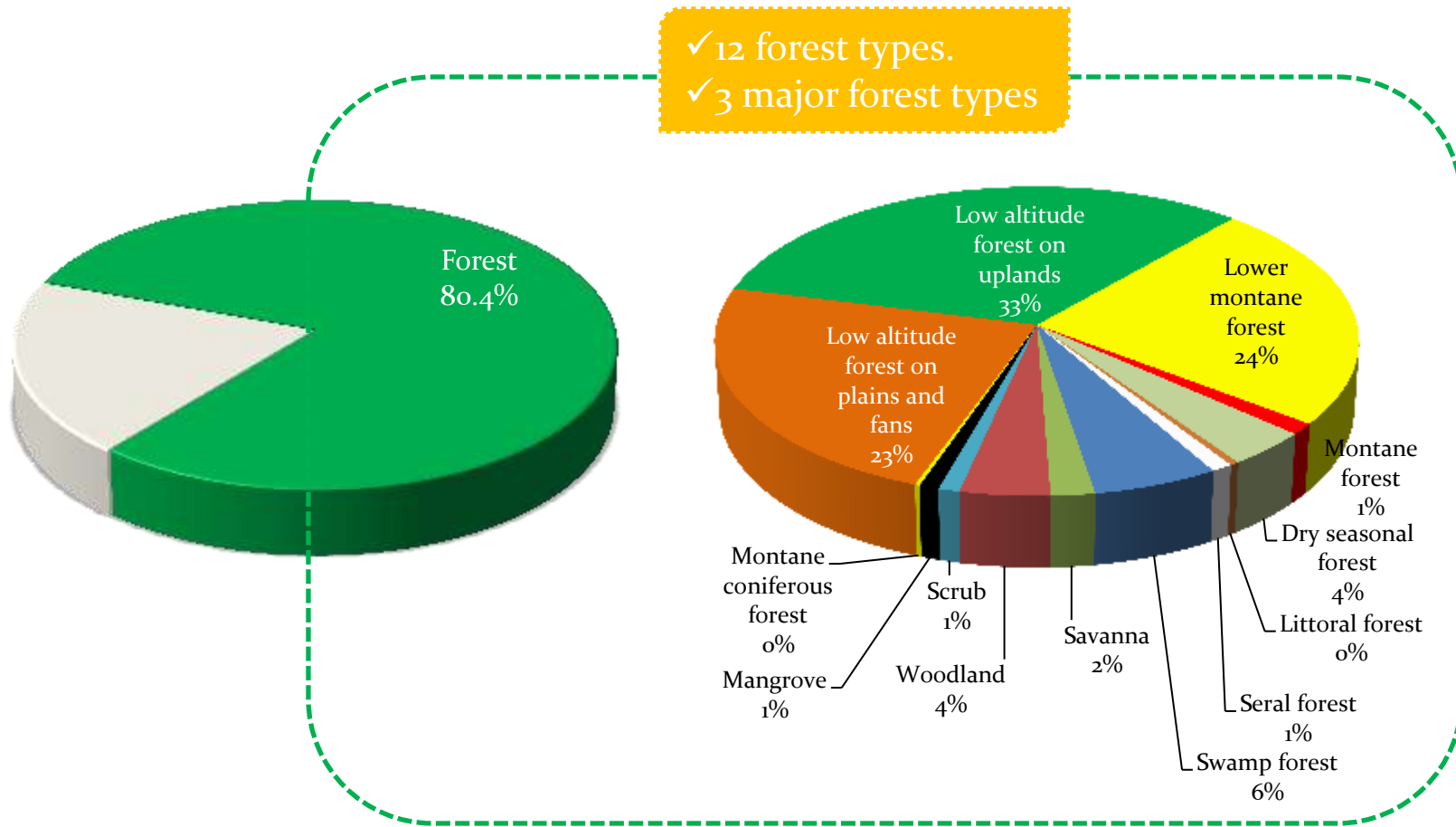
Findings: Forest & Land Use



Post Courier, 21st May 2014

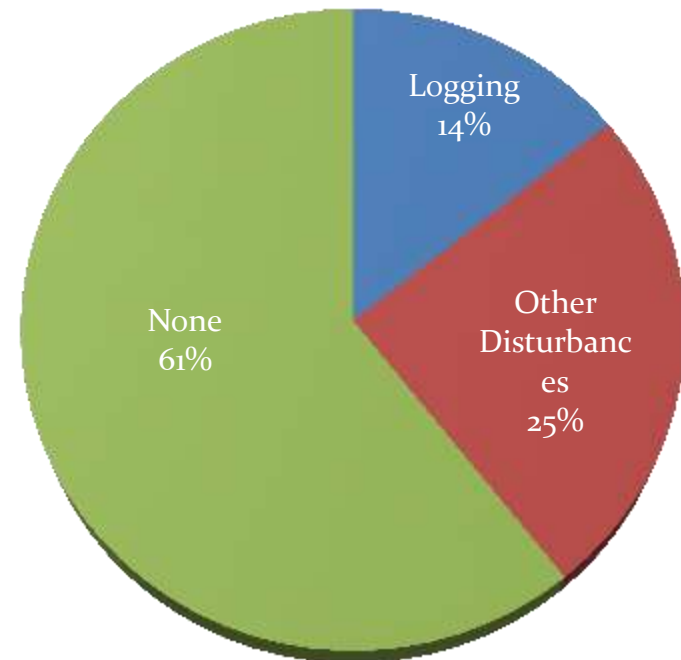
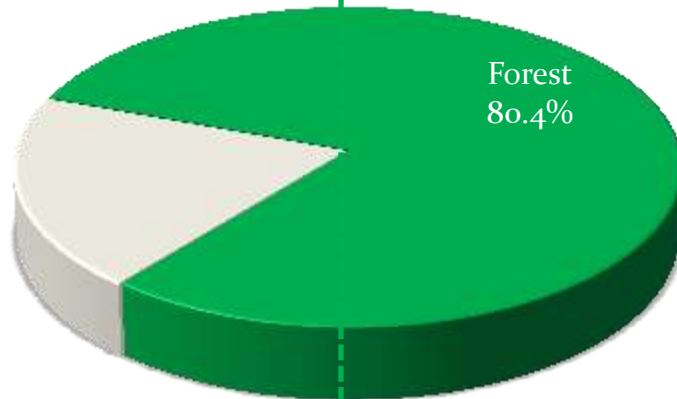
PNG forest cover reported in FRA 2010 was 62%!

Forest Composition

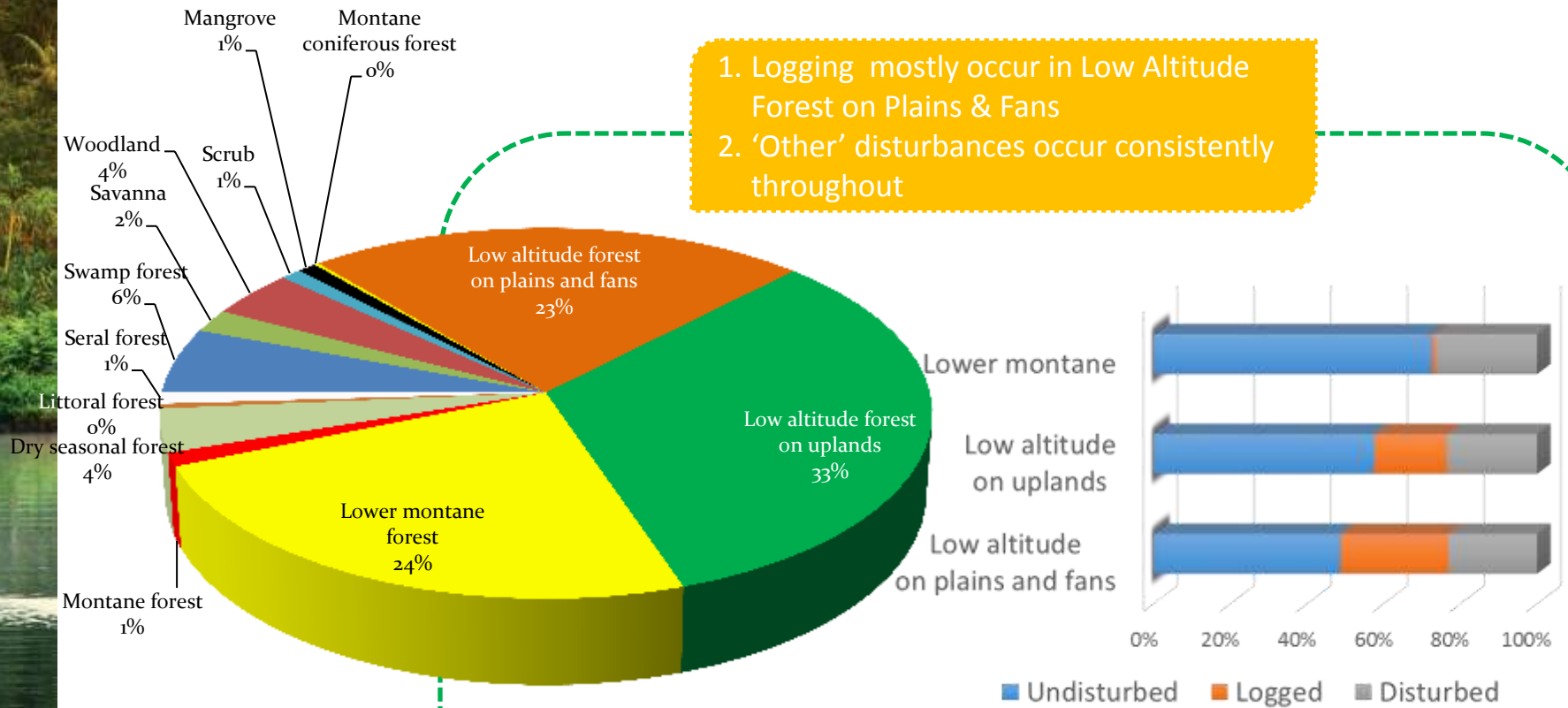


Forest Disturbance

About 60% is still intact or not disturbed by human activities

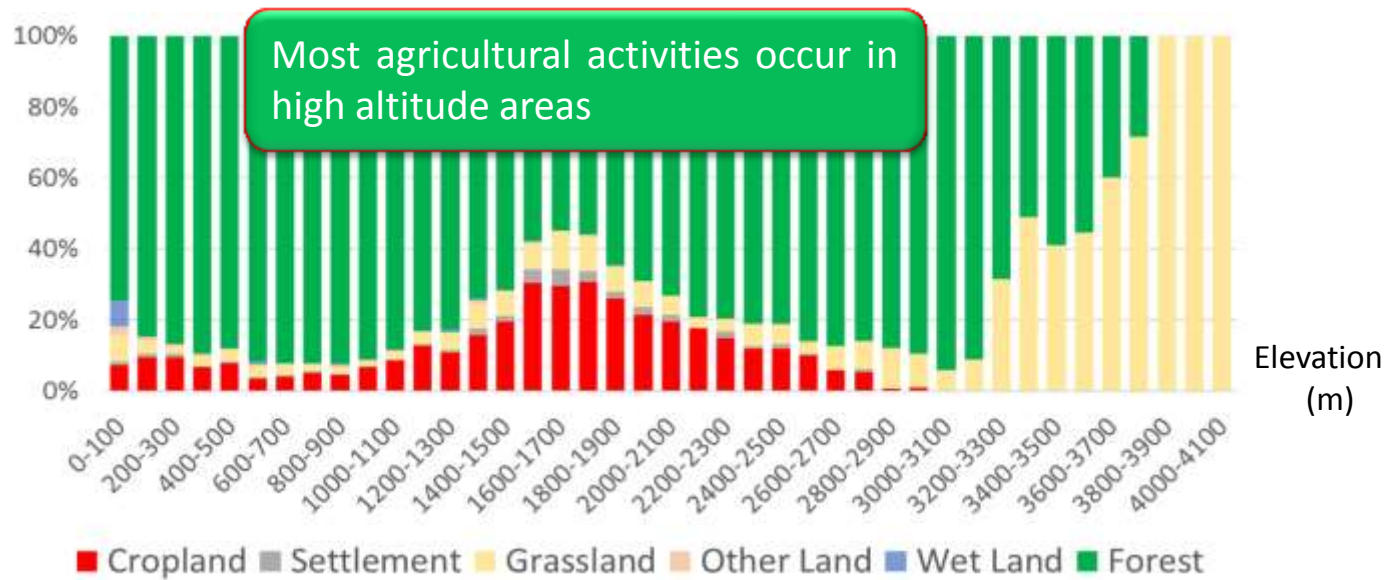


Disturbance in Forest Types

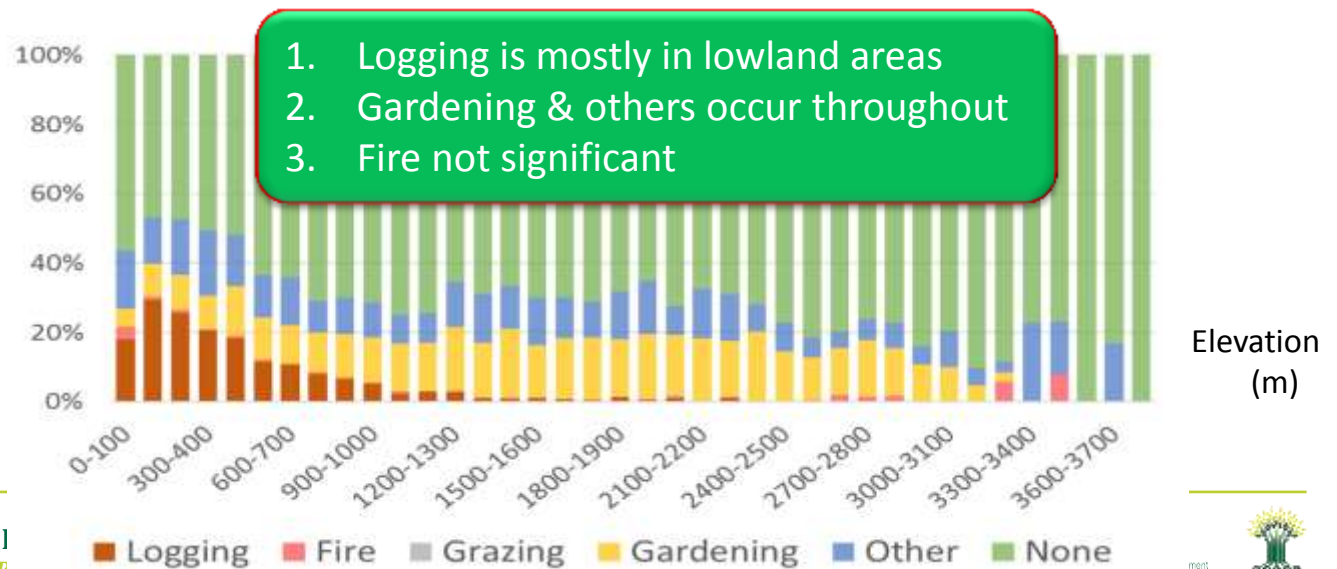


Land use and Forest Disturbance at Elevation Range

Land use in elevation range

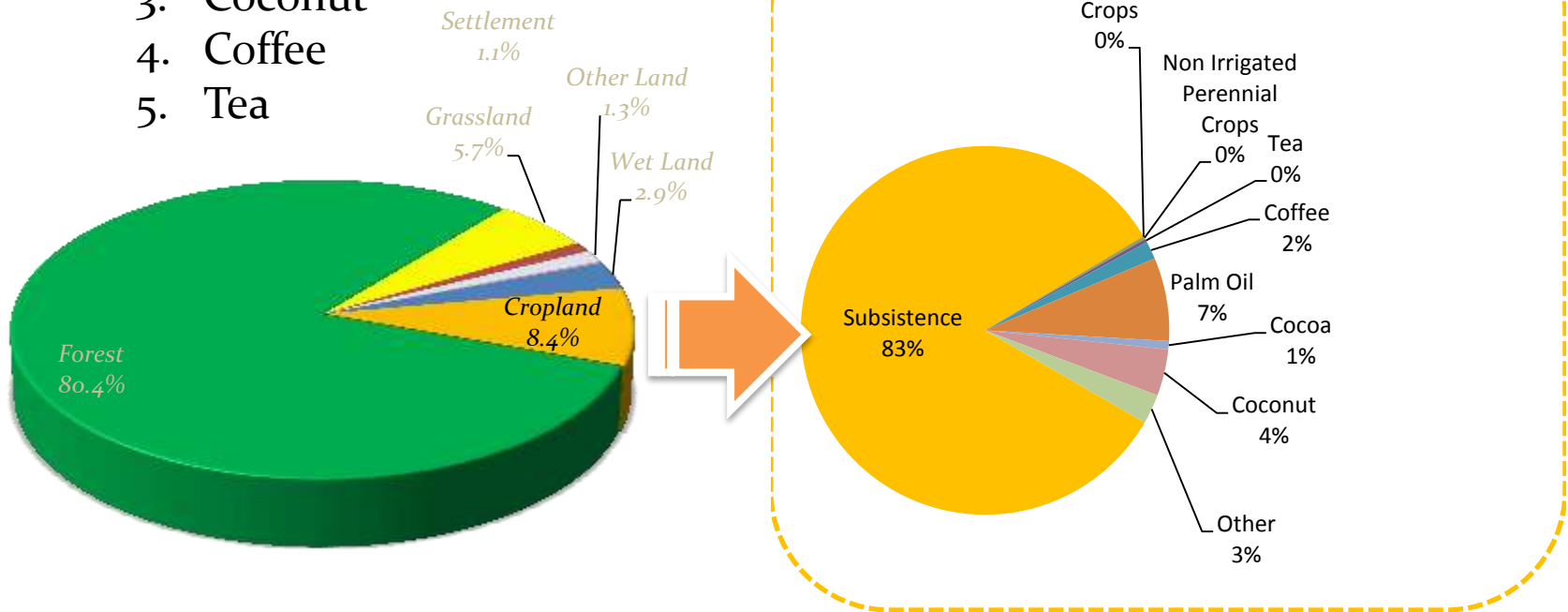


Forest disturbance in elevation range



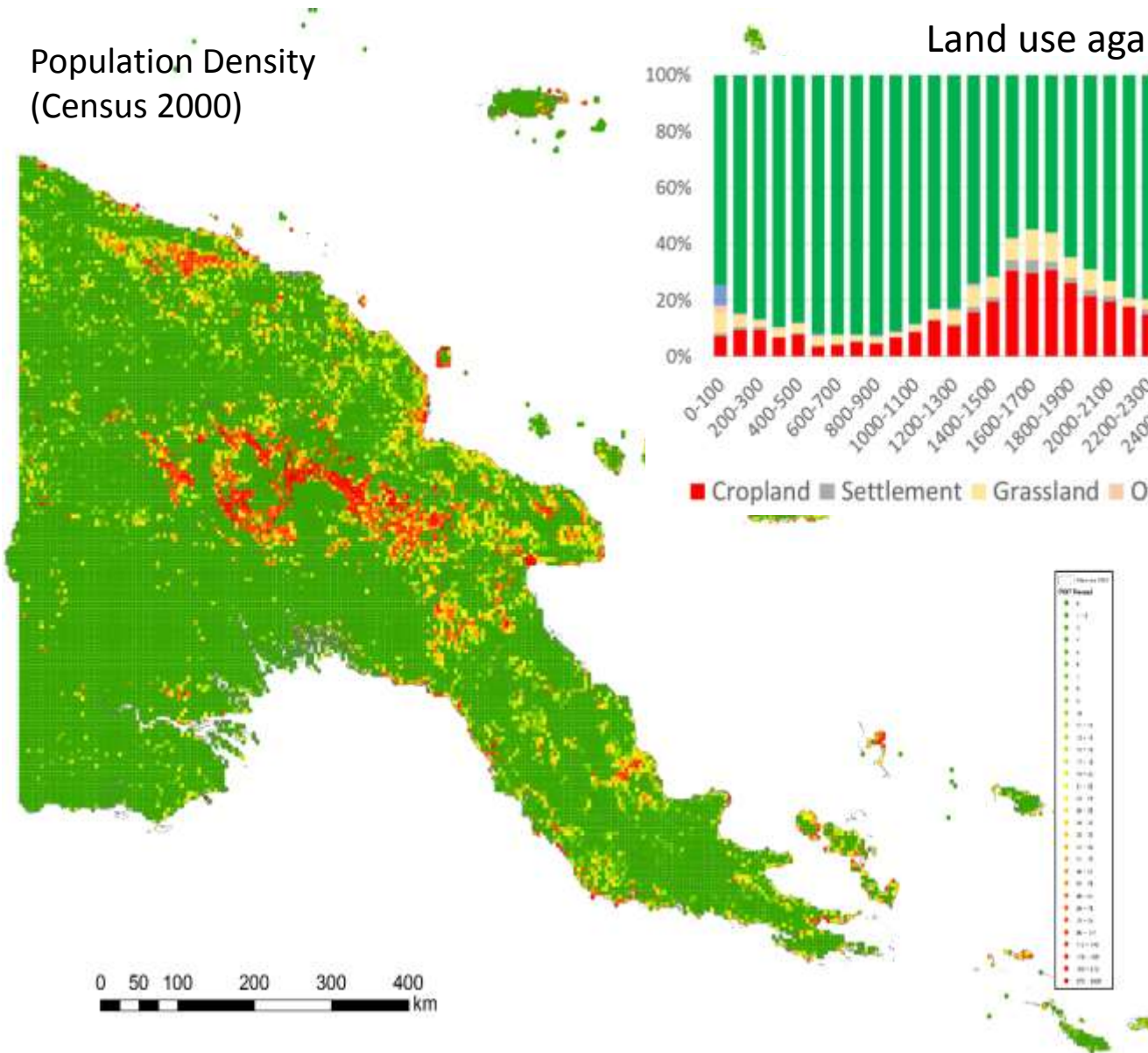
CROPLAND Composition

1. Subsistence Agriculture
2. Oil Palm
3. Coconut
4. Coffee
5. Tea



Land use and Population Density

Population Density
(Census 2000)

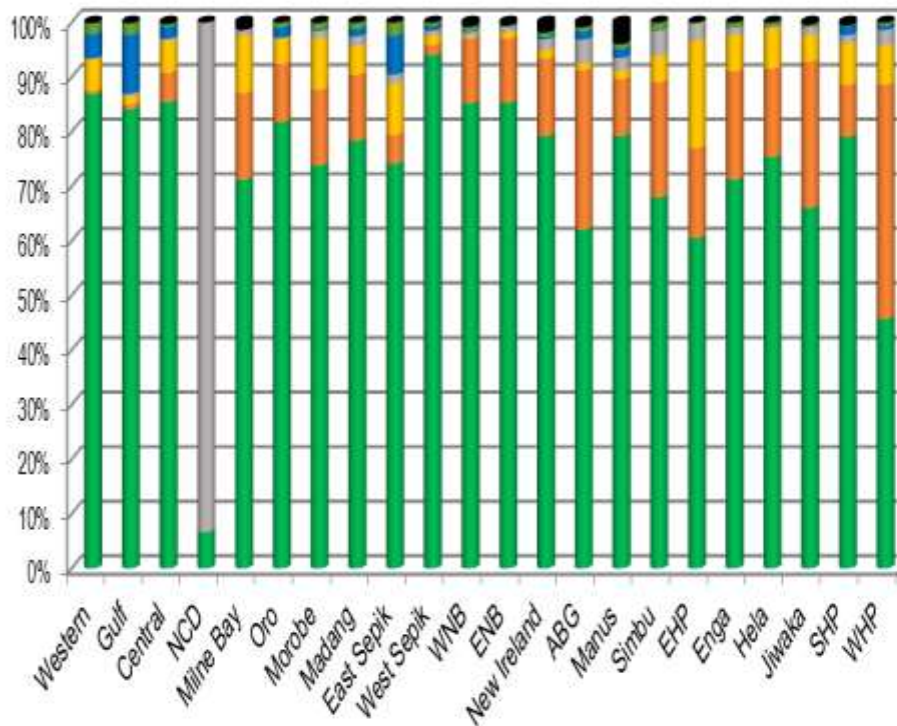


0 50 100 200 300 400 km

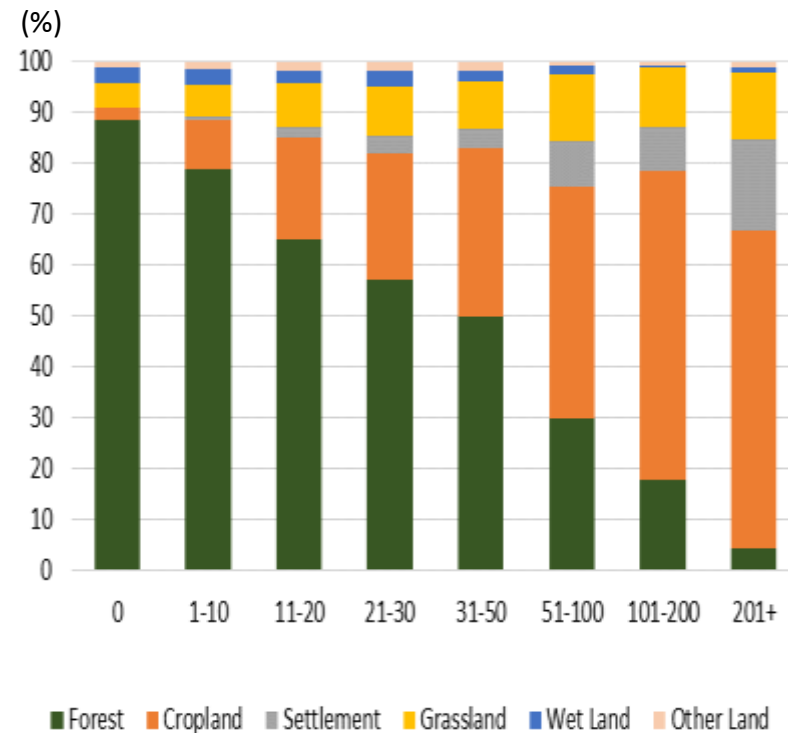
Land use in Provinces

1. More cropland in WHP & ABG
2. Subsistence Agriculture is common in all provinces except WNB where Palm Oil is prevalent

1. There is strong correlation between the proportions of land use and population density.
2. With increase of population density;
 - settlement & cropland increase
 - forest decrease



Land use composition in each province in PNG.

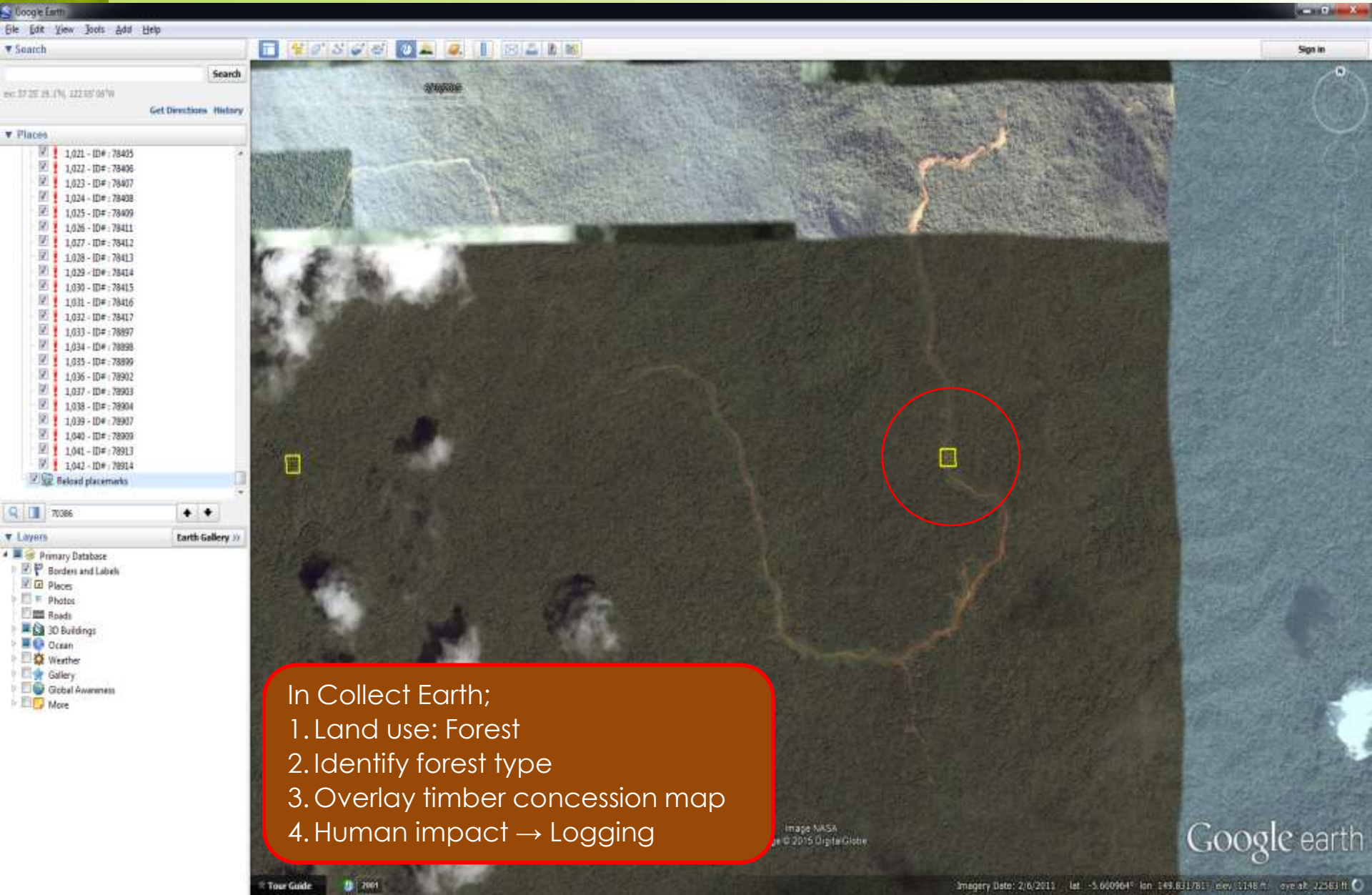


Next Steps

Assess Forest & Land Use Change between year 2000 – 2015

- to identify the drivers of
 - Forest change (deforestation/degradation)
 - Other land use changes

High Resolution Imagery - 2011



1. Land use: Forest
2. Identify forest type
3. Overlay timber concession map
4. Human impact → Logging

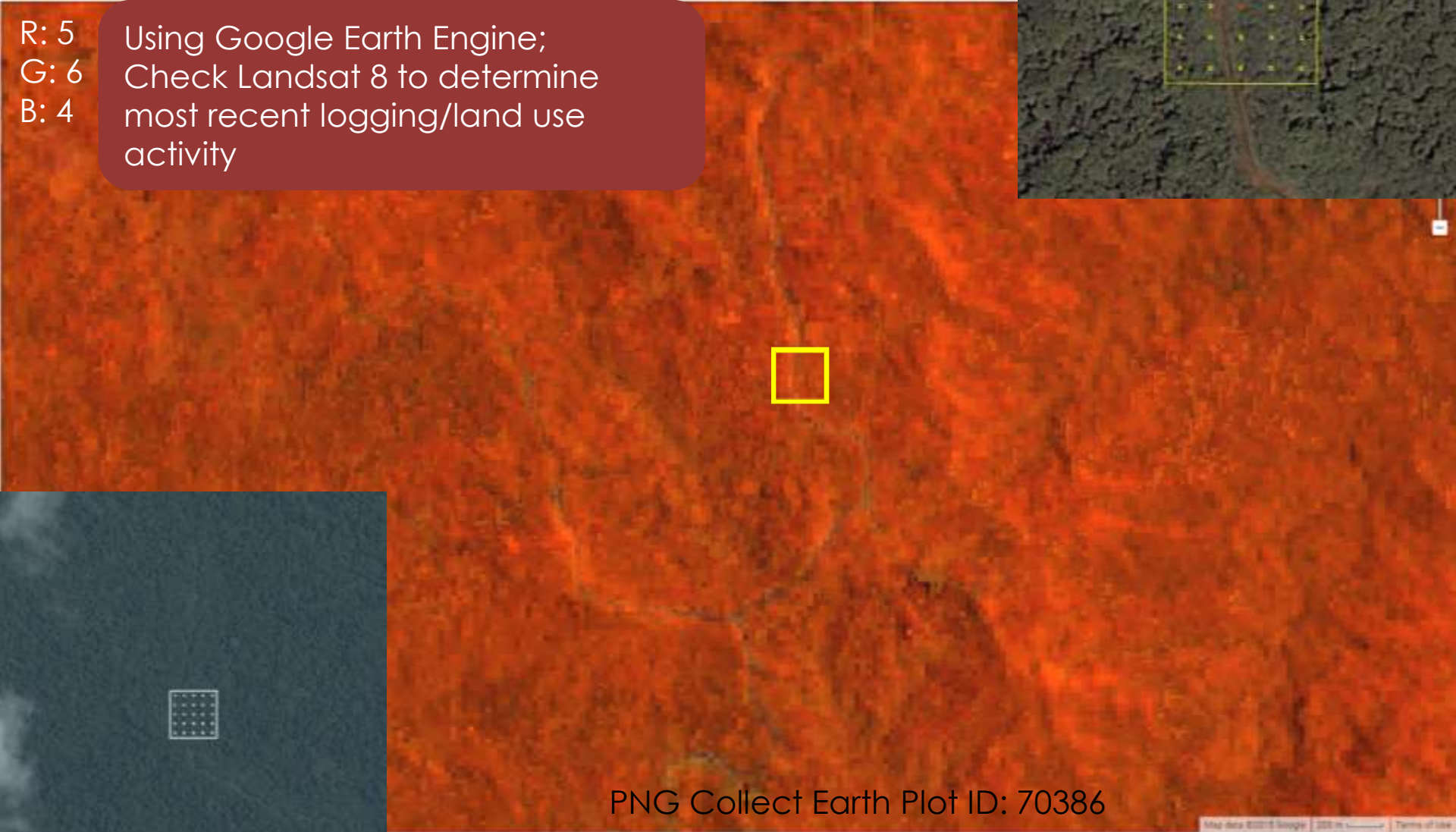
Landsat 8 - 2015

Google Earth (2011)



R: 5
G: 6
B: 4

Using Google Earth Engine;
Check Landsat 8 to determine
most recent logging/land use
activity



PNG Collect Earth Plot ID: 70386



Bing map (2013)

FORESTRY WEEK 2016
E!



Landsat 7- 2002

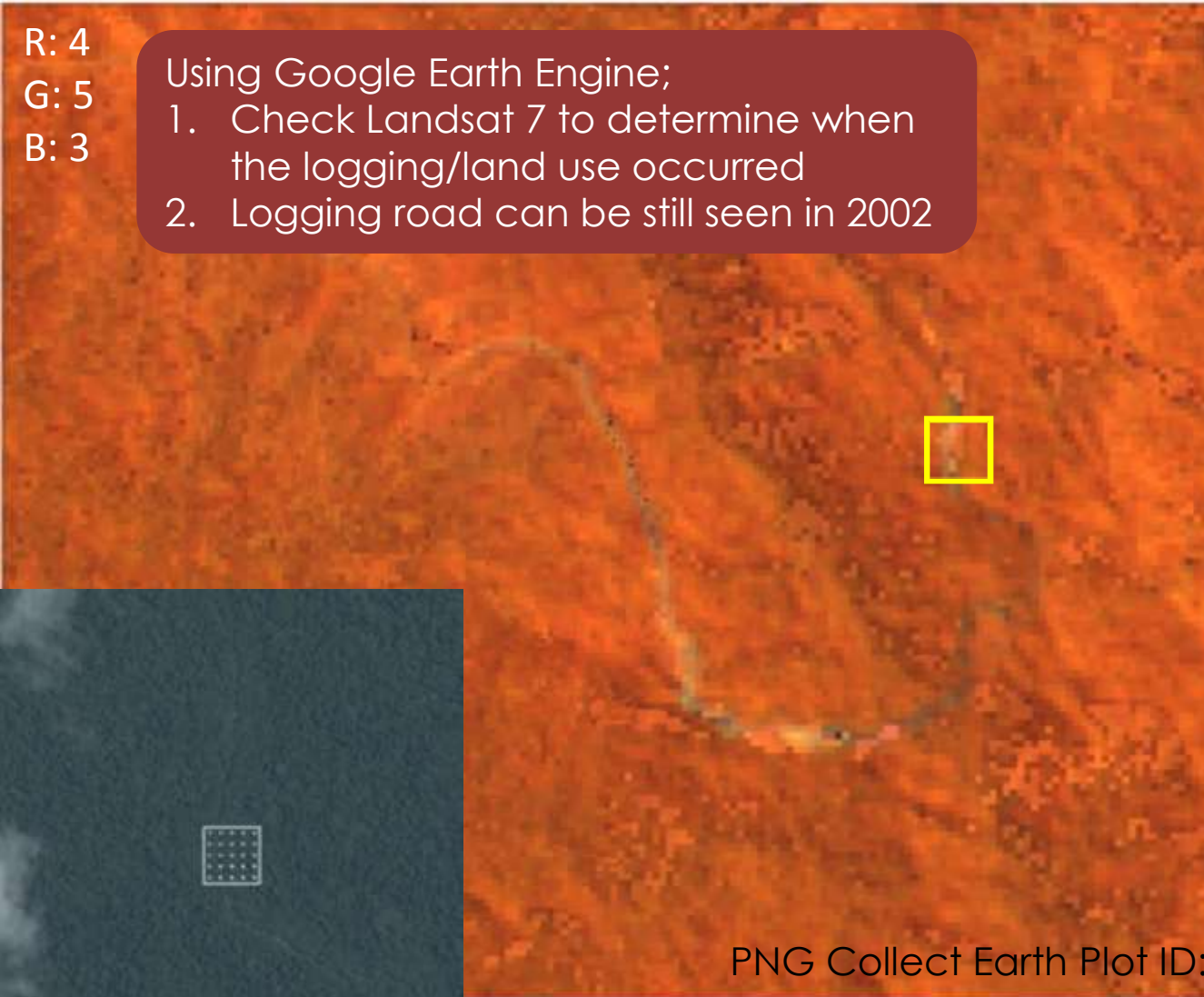
Google Earth (2003)



R: 4
G: 5
B: 3

Using Google Earth Engine;

1. Check Landsat 7 to determine when the logging/land use occurred
2. Logging road can be still seen in 2002



PNG Collect Earth Plot ID: 70386

Bing map (2013)

FORESTRY WEEK 2016
E!



Landsat 7- 2001

Google Earth (2003)

R: 4
G: 5
B: 3

1. Logging road not visible in 2001
2. Therefore Logging started in 2002



PNG Collect Earth Plot ID: 70386

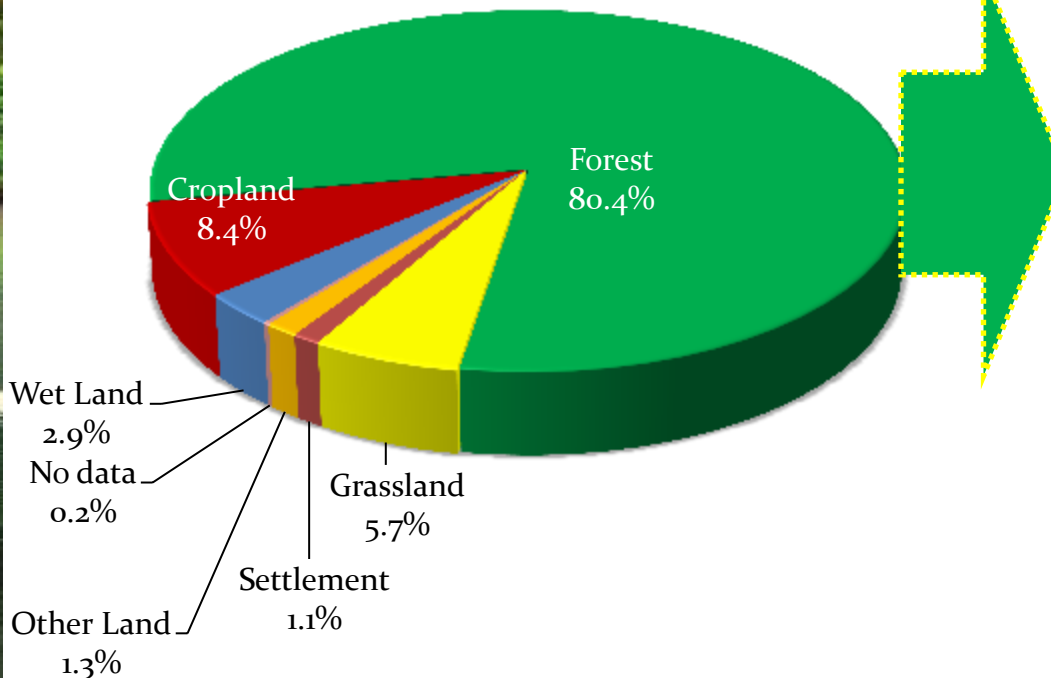
Map data ©2013 Google 200 m Terms of Use



Key Message

We now have the capacity to monitor:

1. PNG's Forest, Land Use & Land Use Change
2. REDD+ activities



This information is useful for:

1. Policy & Measures
2. Forest Stratification for future NFI
3. REL/RL

Thank You!



Food and Agriculture
Organization of the
United Nations



Asia-Pacific
Forestry
Commission



Department of Environment
and Natural Resources



Center for International
Forestry Research