

Global Symposium: REDD+ in a Green Economy
UN-REDD PROGRAMME
19-21 June 2013, JW Marriott Hotel,
Jakarta, Indonesia

**Ethiopia:
Sustainable Land-Use for Green growth**



Federal Democratic
Republic of Ethiopia
Ministry of Agriculture
Addis Ababa

Wubalem Tadesse
Ethiopian Institute of Agricultural Research
wubalem16@gmail.com

ETHIOPIA is a landlocked country in the horn of Africa

Eritrea North (910 Kms),

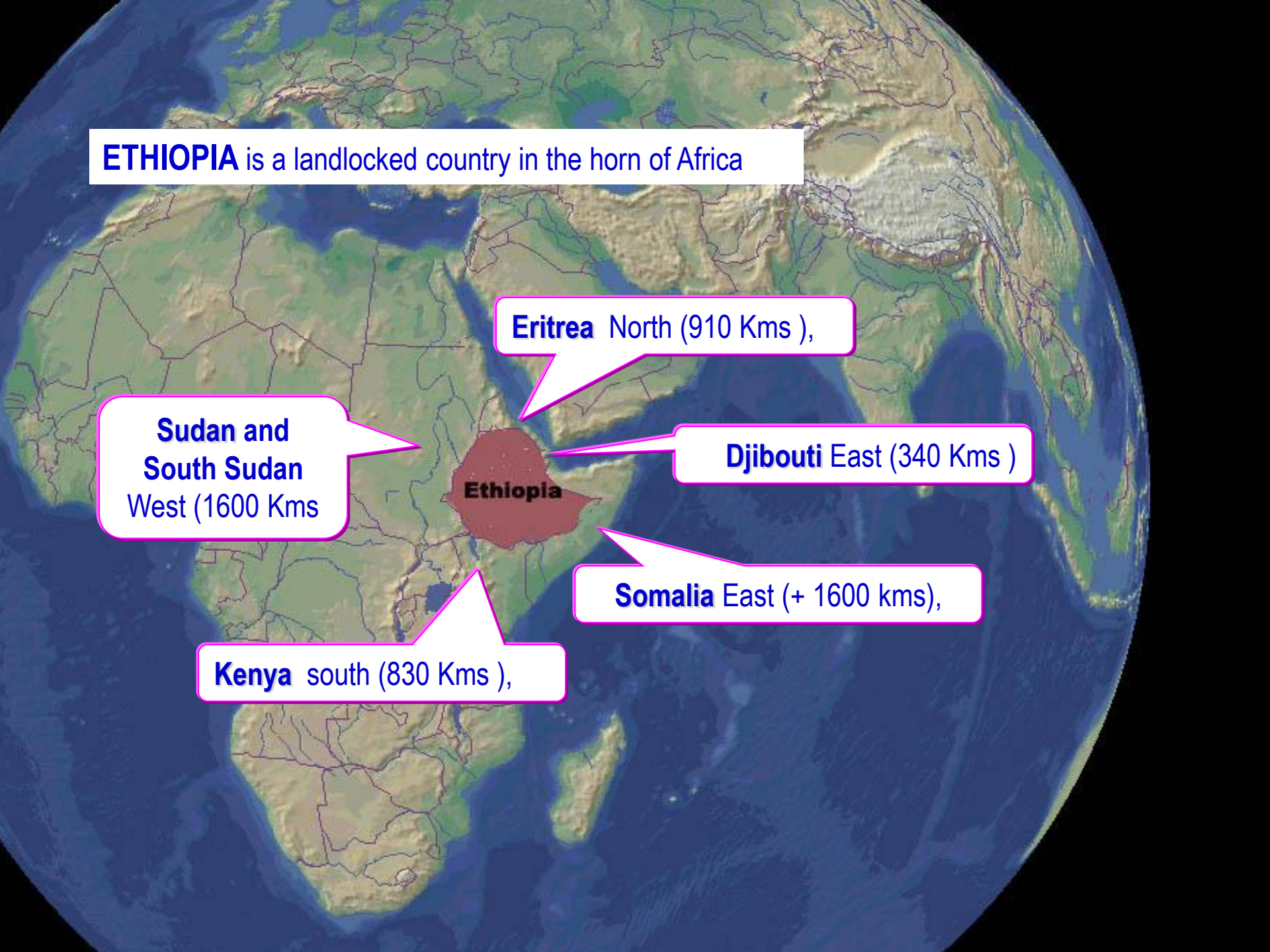
**Sudan and
South Sudan**
West (1600 Kms

Djibouti East (340 Kms)

Ethiopia

Somalia East (+ 1600 kms),

Kenya south (830 Kms),



Size

Ethiopia has a total area of **1,104,300** km². The size of **France, Spain** and **Portugal** is the approximate size of Ethiopia.

- The **4th** largest in Africa.

Population

The population of Ethiopia has reached +80 **million**. After **Nigeria**, the **2rd** most populous in Africa.

Religion

Orthodox (Christian) 43.5 %

Muslim/Islam 33.9 %

Protestant 18.6 %

Traditional 2.7 %

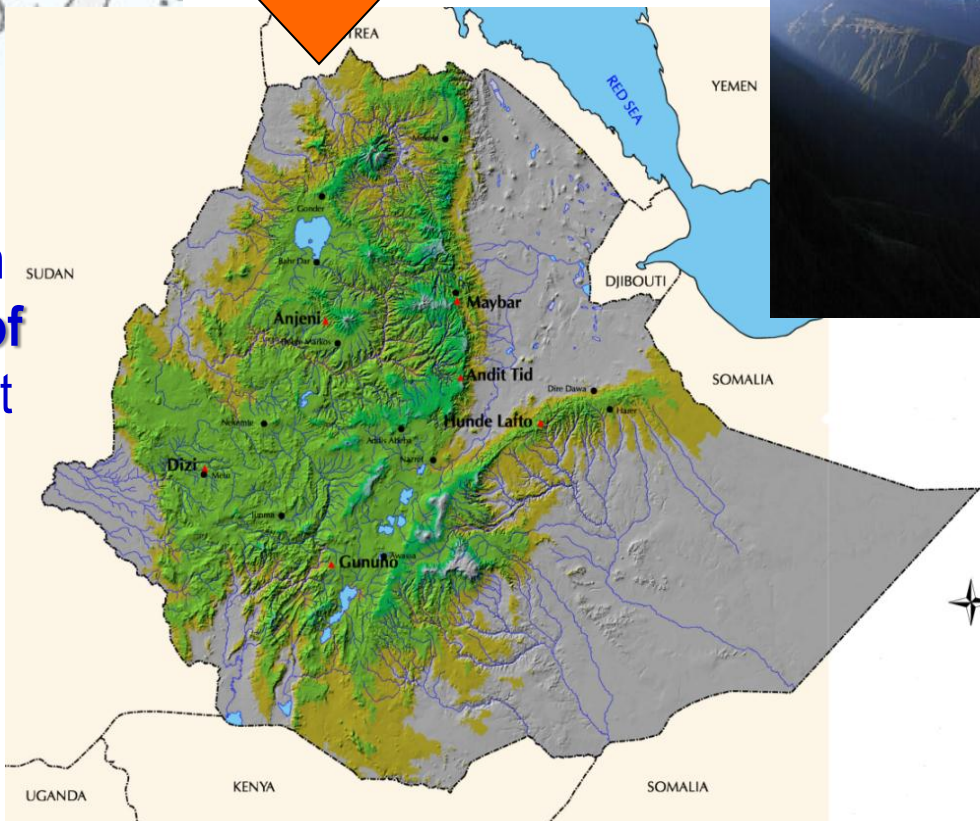
Catholic: 0.7

(CSA, 2007)





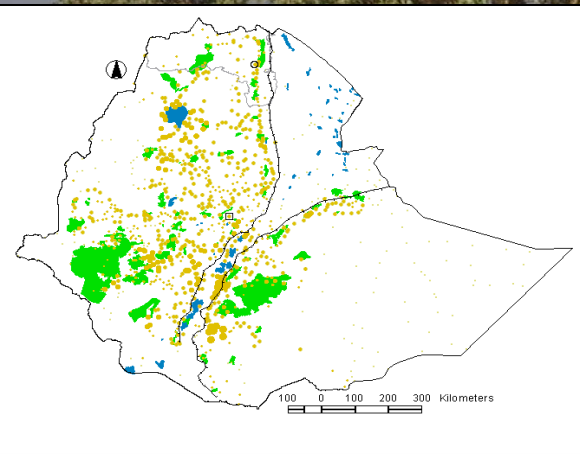
Ethiopia has been called “**The Roof of Africa**” for its most outstanding topographical feature



FOREST RESOURCES

Ethiopia owns a total of **59.7 million ha** covered by woody vegetation among which:

- **3.56 % are high forest** (about 4.07 million ha),
- 49 % woodland (29.24 million ha) and
- 44.2 % shrubland or bushland (26.4 million ha)
- Bamboo 1 % (1.1 million) and
- plantations cover estimated to 0.9 % (955,705 ha.)(WBISPP, 2004),



Climate Resilient Green Economy (CRGE) Strategy

The Vision of **CRGE** is to build climate resilience & take steps to ensure the economy is green (carbon neutral) & sustainable by 2025.



50 % of the green economy pillars focus on agriculture (crop and livestock) and forestry in which much is expected from the sector to realize the strategy

Four pillars of the green economy:

1. Crop and livestock production practices & efficiency improvement while reducing emissions
- 2. Protecting and re-establishing forests for their ecosystem services and as carbon sinks**
3. Expanding electricity generation from renewable sources of energy for domestic and regional markets
4. Leapfrogging to modern and energy- efficient technologies in transport, industrial sectors, and buildings

Green Economy - Agriculture Sector...

Protecting and re-establishing forests for their ecosystem services and as carbon sinks

- Forest protection & management
- Dissemination and usage of fuel- efficient stoves and/or alternative-fuel cooking & baking techniques
- Increase afforestation, reforestation and forest management (C sequestration)
- Promoting area closures (soil fertility, C sequestration)



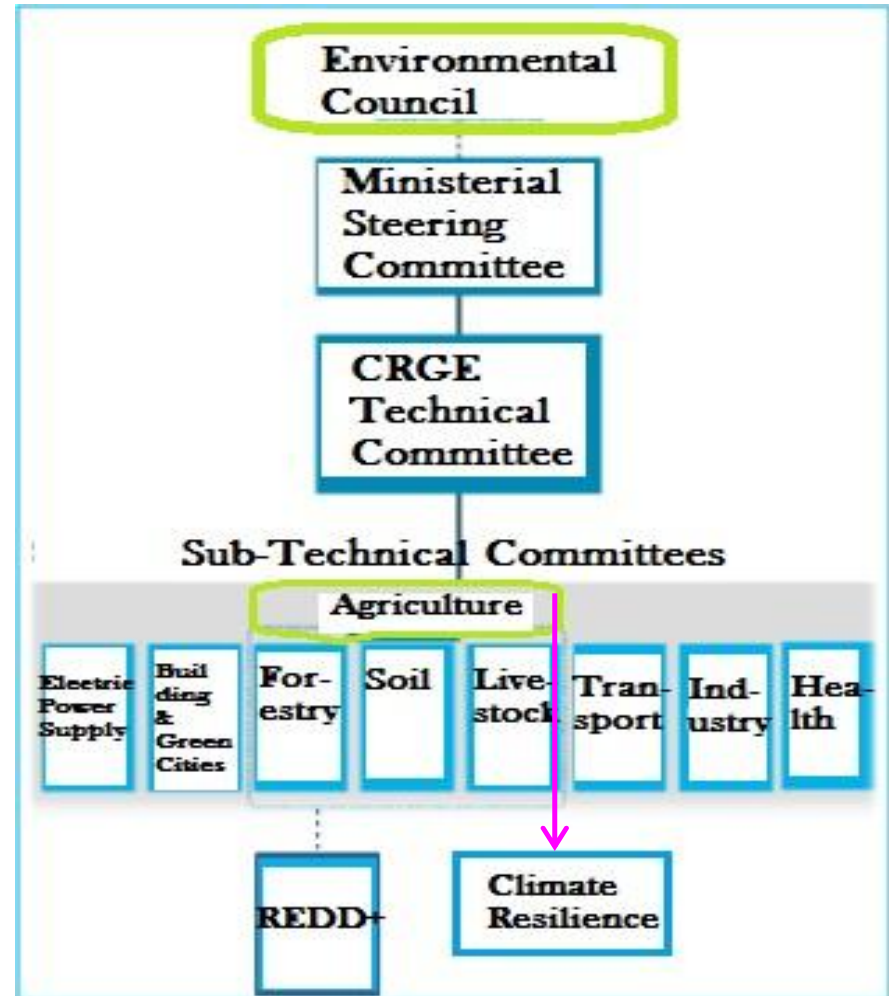
1. Protecting and re-establishing forests for their ecosystem services and as carbon sinks

- **REDD+** R-PP as a plan for implementation and front runner initiative
- Similar details expected for afforestation/ reforestation, area closure, agroforestry, small holder plantations
To be conducted in collaboration with SCIP & other stakeholders (CIFOR, ICRAF, etc)



Institutional Arrangement

- Integrating & mainstreaming CRGE- National context
- Cross-sectoral response and multi stakeholder involvement



REDD+ in Ethiopia

**STATUS OF REDD+ READINESS (R-PP
IMPLEMENTATION)**



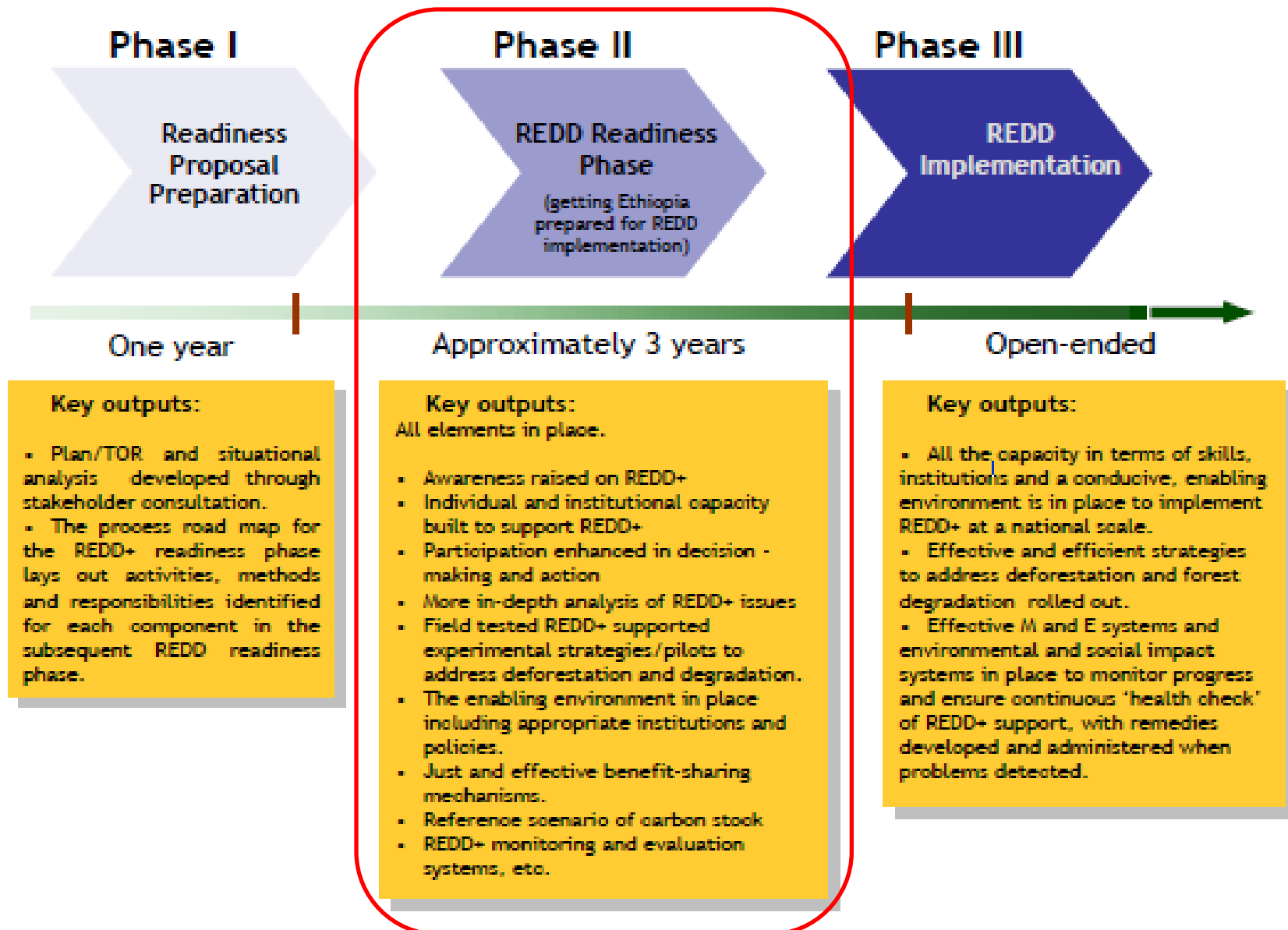
Ethiopia REDD+ Potential

2.76 billion tons of C (Yitebitu Moges et al ., 2010)

Carbon tower of the Horn?

Bahir Dar & Lake Tana

STATUS OF ETHIOPIA'S REDD+ PROJECT



Institutional Integration:

The Government of Ethiopia incorporated REDD+ into a comprehensive national CRGE strategy & its modalities of structure

Sectoral Context:

- EPA served as a seat to REDD+ secretariat till the end of November 2011
- Afterwards, decision made that **MoA** shall be the house for REDD+ secretariat

Regional & Lower Levels Context:

MoA has taken the diversity of its structure from top to bottom to integrate REDD+ into CRGE Cross sectoral dialogue is also considered

STATUS OF REDD+ PROJECT

**National
Context**

**Environmental
Council**

Ministerial Steering Committee
(chair: Ato Newai Gebre-ab,
EDRI)

Technical Committee
(chair: Ato Dessalegne Mesfin,
EPA)

Sub-Technical Committees

Agriculture

**Electric
power
supply**

**Building
& green
cities**

Forestry

Soil

**Live-
stock**

**Trans-
port**

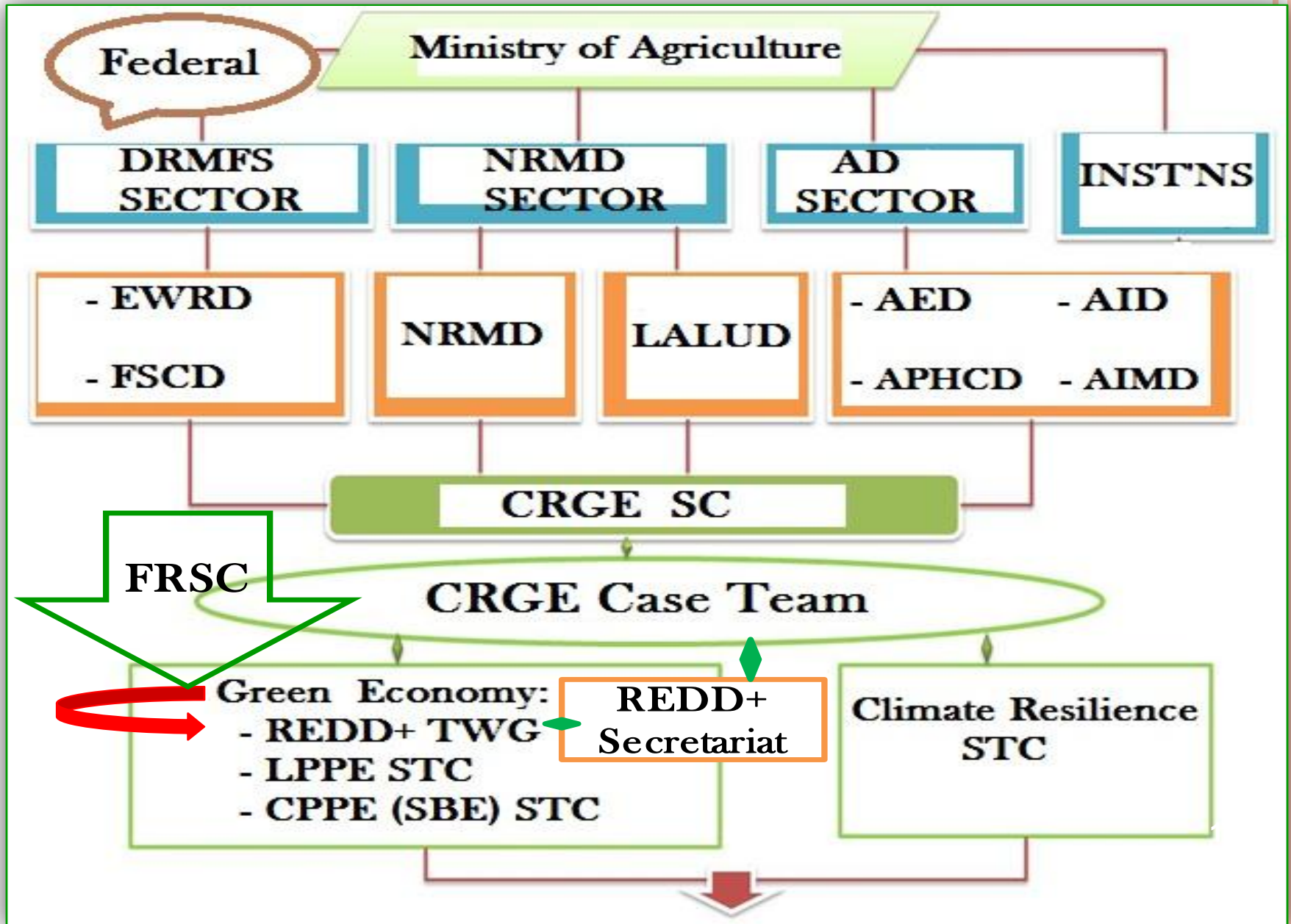
Industry

Health¹

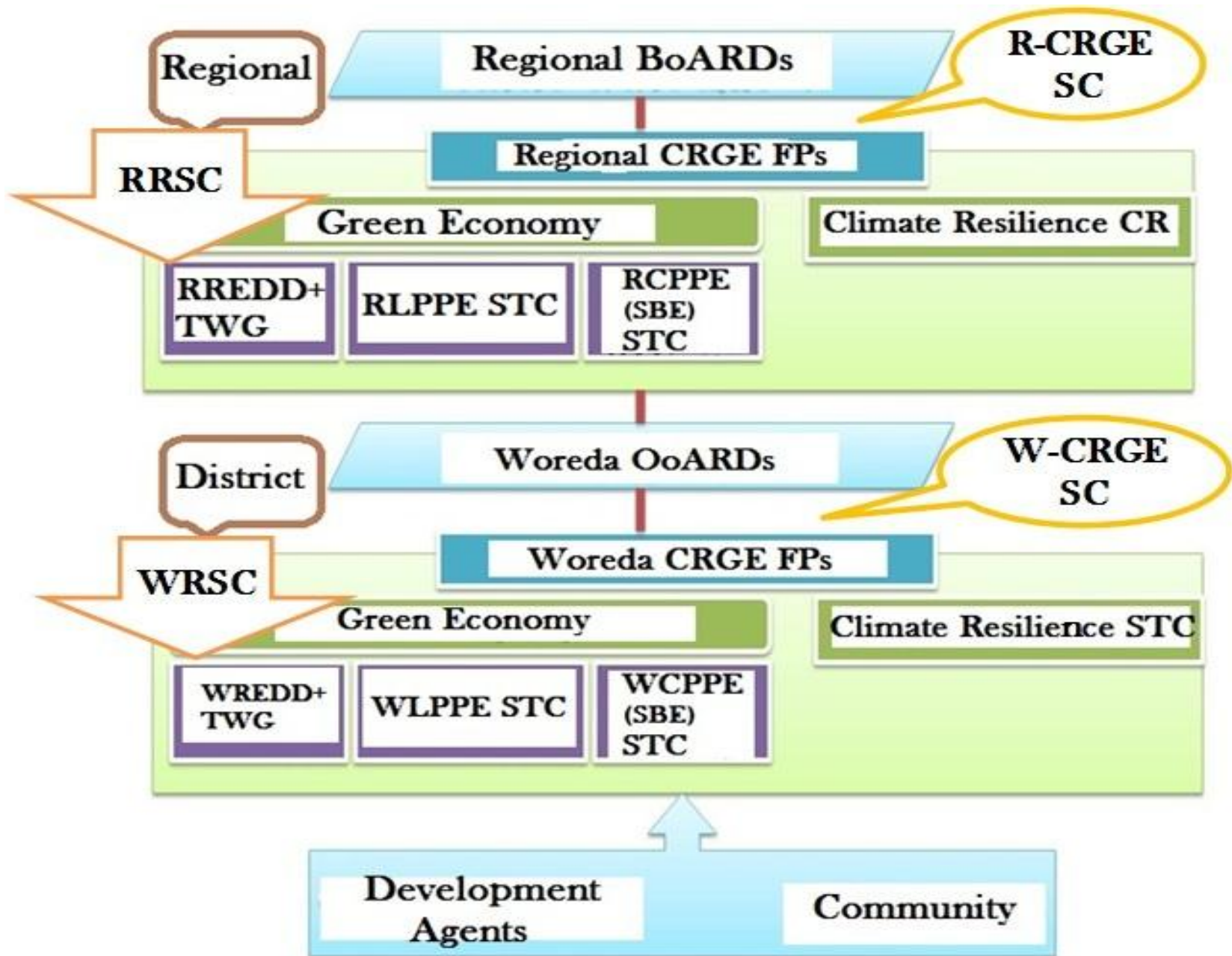
REDD+



STATUS OF REDD+ PROJECT



STATUS OF ETHIOPIA'S REDD+ PROJECT



Milestones in REDD+ Process in Ethiopia

1. R-PIN – approved July 2008
2. R-PP to FCPF
3. Readiness grant – approved March 2011
4. Ethiopia final R-PP – approved May 2011
5. Ethiopia Grant Agreement Signed– October 2012
6. REDD+ Readiness Phase Officially Launched- January 2013
7. Federal REDD+SC established
8. Federal REDD+ TWG established



REDD+ Secretariat Staff

All ToRs for key staff developed with the support of the WB and recruitment being undertaken

Staff recruitment status:

- National REDD+ Coordinator (done)
- Communication specialist (In progress)
- Safeguards/SESA specialist (In progress)
- Senior M & E specialist (To be advertised)
- Senior MRV specialist (ToR developed)
- Remote Sensing specialist
- Procurement specialist (In progress)
- Financial management specialist (In progress)
- Pilots Coordinator



STATUS OF REDD+ PROJECT

Selection of forest candidates for REDD+ :

Based on the invitation we made, possible forest candidates for REDD+ pilots have been proposed by regions:

▪ Oromia

1. Bale Forest (500,000 ha)
2. Yayu Forest (85,837 ha)
3. Jimma Illu (794,343 ha)
4. Wellega Forest
(Moist forest = 39,738 ha)
(Woodland = 325,452 ha)
5. Borena Guji (484,000 ha)



STATUS OF REDD+ PROJECT

- SNNP
Sheko-Guraferda natural forest (31,572 ha)
- Somali
Liben, Afdher, Warder zones (woodland, area not specified)
- Amhara
Kahtasa-Guangua Illala (30,530 ha)
- Gambela
Mengesh forest (61,984 ha)
- Tigray
Mugulat forest (39, 556 ha)



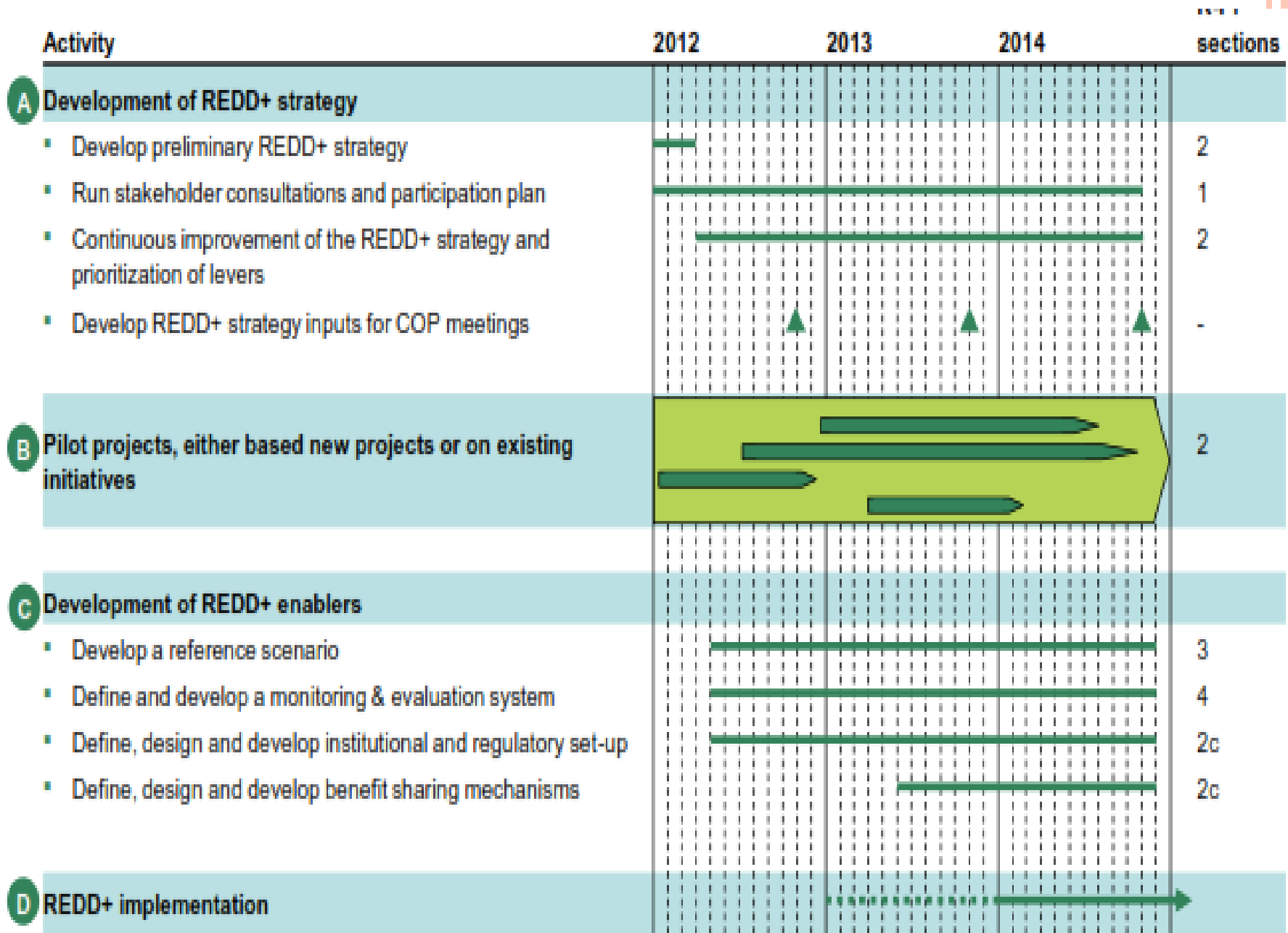
STATUS OF REDD+ PROJECT

Existing best practices

The case of Bale Ecosystem Service. Bale Natural Forest Managed by PFM program. Farm Africa with the community participation.



NEXT STEPS



BUDGET FOR R-PP IMPLEMENTATION

- 14 million USD- Budget solicited and made available
- FCPF (World Bank) 3.6 million USD
- Norway 5 million USD
- DFID (UK) 5 million USD



CONCLUSIONS

- The proper implementation of CRGE (Climate Resilient Green Economy) strategy will ensure sustainable land use for Green Growth of Ethiopia.
- REDD+ is an opportunity for supporting forestry development activities in Ethiopia. There are integrated efforts at Federal and regional level in the country.





Thank you



Federal Democratic
Republic of Ethiopia
Ministry of Agriculture
Addis Ababa

10 3 2007