



International Seminar on REDD

Tokyo, 10-12 March 2010

Lessons Learned & Challenges from the Implementation of ITTO REDDDES Program

by

Ma Hwan Ok, Projects Manager

INTERNATIONAL TROPICAL TIMBER ORGANIZATION (ITTO)



Outline

- ITTO at work
- ITTO REDD+ Demonstration Projects
 - **REDDES**: Reducing Deforestation and Forest Degradation and Enhancing Environmental Services
 - A Public-Private Partnership to Promote REDD +
- Lessons learned and Conclusions



The INTERNATIONAL TROPICAL TIMBER ORGANIZATION (ITTO)

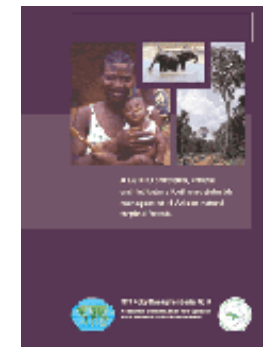
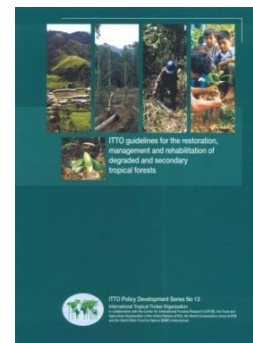
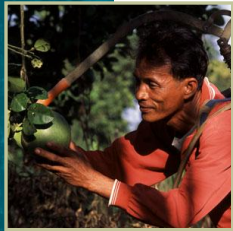
- an **intergovernmental organization** established under the auspices of the UNCTAD in 1986 to operate **International Tropical Timber Agreement (ITTA)**, legally binding agreement;
- is based in Yokohama, Japan;
- is promoting the **conservation and sustainable management, use and trade** of tropical forest resources;
- is governed by **ITTC** (Council)



Achieving the Objectives of the ITTA



- Policy work (i.e. guidelines, tools)
- Project work (capacity building)





DONORS to ITTO

Since 1987, funded 940 projects, pre-projects and activities valued at more than US\$340 million to build capacity of ITTO producer member countries towards the achievement of SFM

Main donors for project work and other activities:



Japan



Switzerland



United States



Norway



The Netherlands

ITTO Thematic Programme on REDDES



General objective:

To reduce deforestation and forest degradation, enhance environmental services and help improve forest dependant livelihoods through sustainable management of tropical forests, and forest restoration

Specific objective:

To strengthen the capacity of ITTO developing member countries and their stakeholders to:

- reduce **unplanned deforestation**
- reduce **forest degradation**
- maintain and enhance **climate change mitigation and other environmental services** of tropical forests; and
- contribute to the **social and economic sustainability** of forest-dependent communities

ITTO REDDES Demonstration Projects

- 
1. Monitoring Pan-Amazonian forest (Brazil)
 2. Social processes for SFM (Guatemala)
 3. Resources assessment & monitoring (Guyana)
 4. Communities and PES (Peru)
 5. Carbon stock inventory (Dem Rep Congo)
 6. Collaborative management for REDD (Ghana)
 7. PES in degraded/secondary forests (China)
 8. SFM to enhance carbon stocks (Indonesia)
 9. REDD in south Sumatra peatland (Indonesia)
 10. Voluntary carbon marketing scheme (ITTO)

Total allocation 2009: USD 4 million





Monitoring Pan-Amazonian Forest (Brazil) (1)

Monitoring deforestation, logging and land use change in the Pan Amazonian Forest – PANAMAZON II

■ Executing Agency:

**AMAZON
COOPERATION TREATY
ORGANIZATION (ACTO)**

■ Duration & Budget:

4 Yrs (Mar 2010-Feb 2014)

Total: US\$ 7.873.244

ITTO (1.050.320), ACTO
(356.854), ACTO MEMBER
COUNTRIES (1.808.000),
OTHERS (FUNDO
AMAZONIA; 4.658.070)



Seven ACTO Members Countries for the project



Monitoring Pan-Amazonian Forest (Brazil) (2)

■ Outputs

Outputs 1:

National plans for the implementation of a forest cover monitoring system prepared

Outputs 2:

National Plans for **forest cover monitoring system** implemented

Outputs 3:

Spaces for **regional dialogue and coordination** on forest management harmonized and other C&I strengthened



Carbon Stock Inventory in DR Congo



Complementary to UN-REDD

■ Executing Agency:

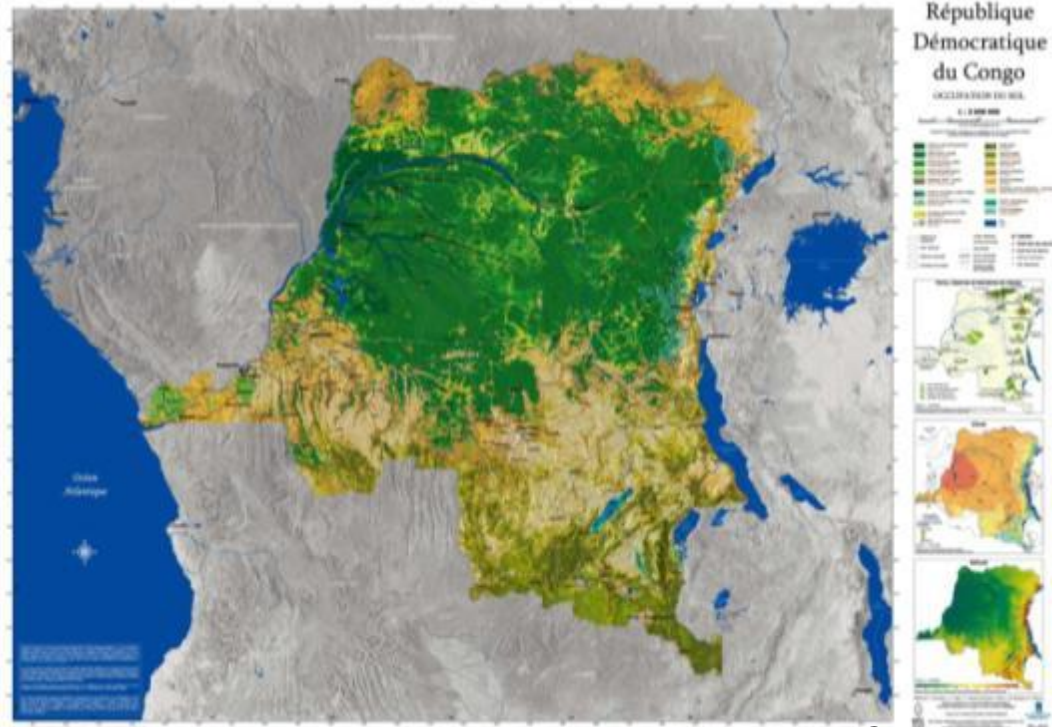
Dep of Inventory and Forest Management (DIAF)

■ Duration & Budget:

- 1 yr (Mar 2010-Feb 2011)
- US\$476,000

■ Project Outputs:

- 1) 70 - 80 technicians of the DIAF, DDD (and other partners) are formed to execute the national forest carbon inventory
- 2) Acquisition, set up and distribution of equipments to operate the national forest carbon inventory



60 mil ha Production Forest in DR Congo

Technical guidance from the on-going ITTO Project

“Multispectral Three-Dimensional Aerial Digital Imagery for Monitoring SFM in Congo”



SFM to enhance carbon stocks in Indonesia

- **Executing Agency:**

DG of Forest Production Development, MoF

- **Duration & Budget:**

2 yrs (April 2010-Mar 2012), US\$535,000

- **Specific Objective:**

To develop national strategy to maintain and increase forest carbon stock through SFM

Completed ITTO project “**Internal Monitoring of SFM Performance at Forest Management Unit Level** [PD 389/05 Rev. 2 (F)]” will complement



REDD in South Sumatra Peatland in Indonesia

■ Specific Objectives:

to enhance conservation and restoration of Peat Swamp Forest ecosystems in South Sumatra

■ Expected Outputs:

- I. Institutional setting to prevent further deforestation and forest degradation
- II. Sound and applicable technology in restoration and rehabilitation of PSF
- III. Demonstration activities with the plantation of indigenous species





REDD-DES Proposals in Asia-Pacific (Pipeline)

Country	Title
Cambodia	REDD Capacity Building
Philippines	Promoting REDD through community participation in Calabarzon region
Indonesia	Development of carbon certification system in Indonesia
PNG	Multipurpose National Forest Inventory (MNFI)

ITTO REDD-DES Cycle Calendar for 2010 will be available in March 2010

ITTO Partnerships in Support to Countries

COUNTRY LEADERSHIP

1. Reducing emissions from deforestation
2. Reducing emissions from forest degradation
3. Conservation of carbon stocks
4. Sustainable management of forests
5. Enhancement of carbon stocks

Supporting REDD +

- CPF Strategic Framework on F&CC
- UN-REDD
- FCPF
- FIP
- Other initiatives

Harnessing synergies

A Public-Private Partnership to promote REDD



(Japan)

Asia : Indonesia (under implementation)

Africa : Gabon (under project identification)

Latin America : Brazil (under project identification)

A Public-Private Partnership to promote REDD + REDD Conservation Project in Indonesia

Meru Betiri National Park, Java



Executing Agency:

FORDA, MoF

Duration & budget

4 yrs (Jan 2010-Dec 2014)

ITTO - US\$900,000



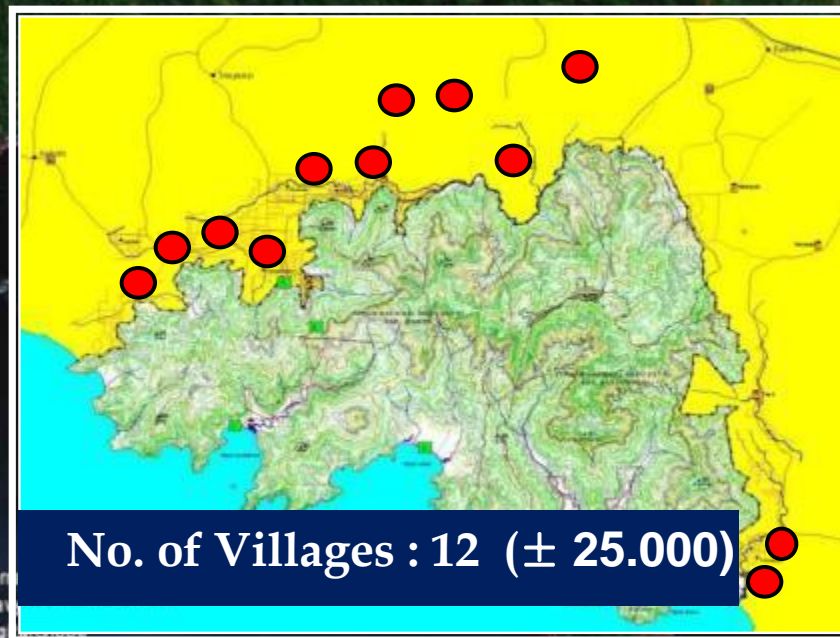
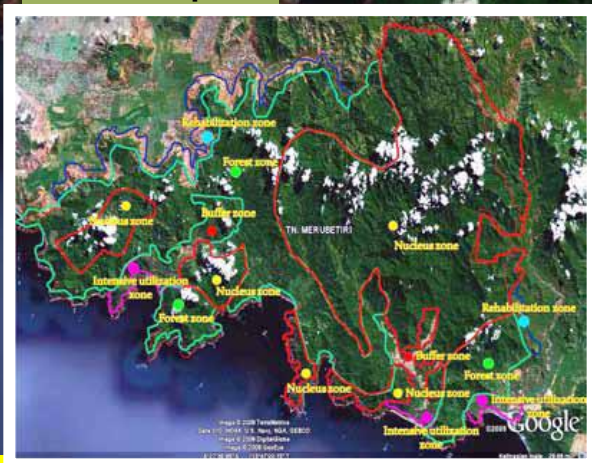
**Ceremony at Indonesian Embassy
(Tokyo, Oct 2009)**



REDD Conservation Project in Indonesia

TN. MERUBETIRI

Land use plan



Meru Betiri NP, Java

REDD Conservation Project in Indonesia

Illegal Activities in Meru Betiri NP



Rotan



Bambu



Penyu & Telur



Primata



Jukung



Kayu Pertukangan



Burung

REDD Conservation Project in Indonesia: Challenges

- ▣ To develop a robust **measurable, reportable and verifiable (MRV) system** for monitoring REDD and enhancement of forest carbon stocks in Meru Betiri National Park (MBNP)
- ▣ To improve the **livelihoods of local communities** living inside and in the surrounding area of MBNP through participation in avoiding deforestation, degradation and biodiversity loss



Lessons learned from forest monitoring



- No system in place at national and FMU levels for comprehensive **forest monitoring** in many countries in the tropics
 - reliable and comprehensive RS data is lacking
 - credible and internationally accepted methodologies for using high-resolution imagery for forest management not yet established
 - local capacity in image capture and processing is weak
- Need to reinforce the **capacities of national institutions** for the development of REDD/MRV system
 - more guidebooks/manuals on how to operate forest monitoring
 - governments, NGOs and private-sector companies need a mechanism to work together on issues of common concerns

Conclusions



- **Country needs** and constraints are paramount
- ITTO has **a long track record** of working with member countries to help put policies into practices and promote SFM activities
- The REDDES Program is on **fast track** to assist 36 ITTO developing member countries
- **Cooperation** with other REDD initiatives such as UN REDD, FCPF and bilateral programmes will enhance synergies and complementarity
- Support of donors and partners including Forest Agency of Japan will enable **ITTO** to further contribute to **REDD/MRV** and meet **international reporting needs**



Thank you for your attention

ma@itto.int

www.itto.int