

# Participatory Governance Assessment (PGA) for REDD+ Implementation in Indonesia: Relevance, Status and Challenges

## PGA FOR REDD+ IMPLEMENTATION IN INDONESIA

Implemented by **UNDP INDONESIA**

Partnering with **Ministry of Forestry, UKP4 and Ministry of Development Planning**

Supported by **UN-REDD GLOBAL Programme**

Working Closely with **Civil Society Organizations, Indigenous Organizations, Sub-national Government , and academicians**

Prof. Dr. Sofian Effendi-  
PGA Expert Panel Member  
PGA International Exchange Meeting  
17-18 April 2012

## The Objectives of PGA for REDD+

UN-REDD  
PROGRAMME



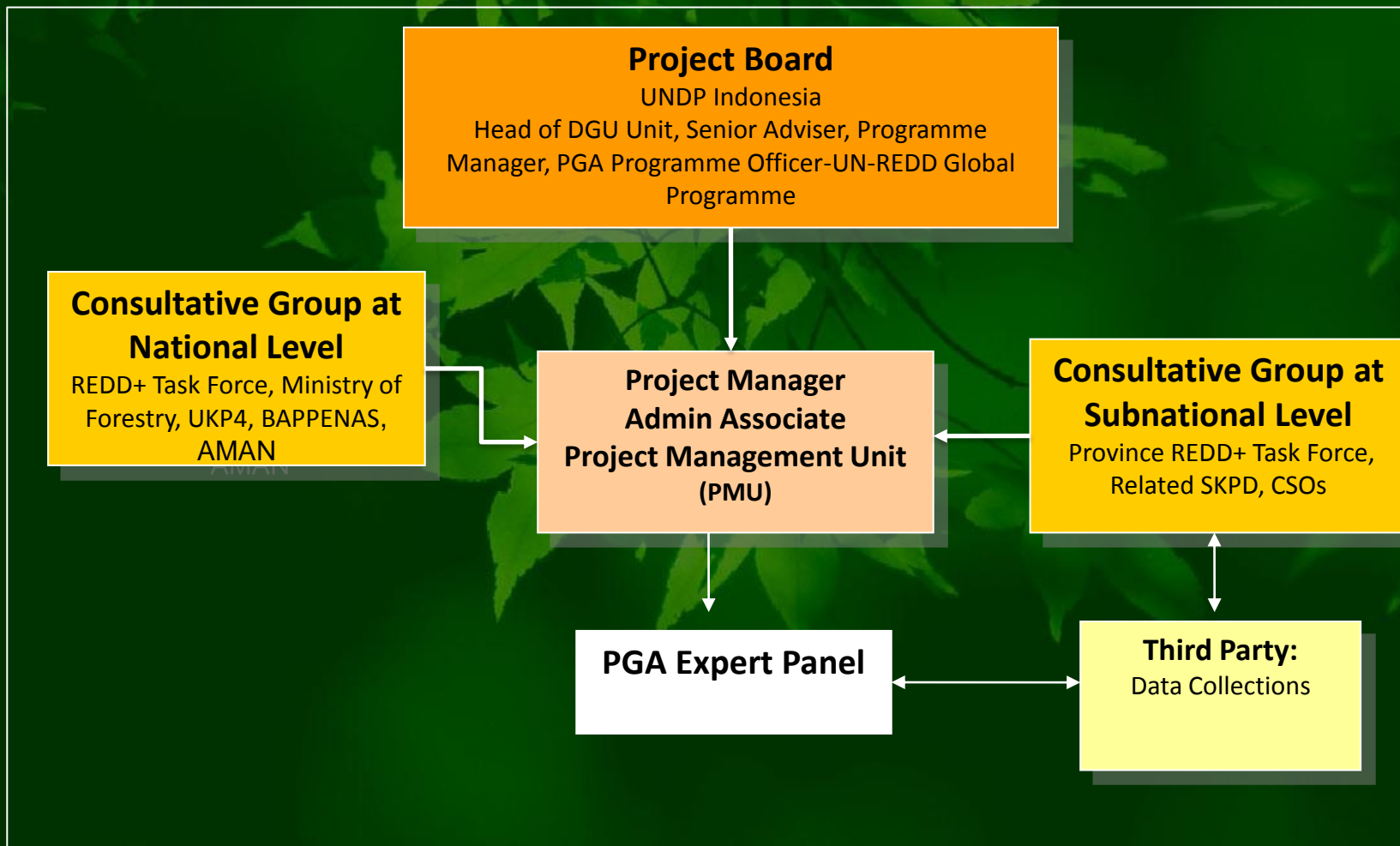
**Baseline** information on governance condition related to Indonesia's preparedness in implementing REDD+ Indonesia

**Policy recommendation** on urgent governance issues during REDD+ readiness and implementation phase in Indonesia and necessary approaches to guarantee the human rights of indigenous communities and other forest-dependent communities during REDD+ implementation in Indonesia

**REDD+ governance roadmap** to define and describe the best ways to strengthen forest and REDD+ governance structure and practices

PGA tool as **monitoring and evaluation instrument** for REDD+ in Indonesia, to be taken over gradually by the government.

**Project PGA Structure**



# Governance Issues

The Indonesian government commits to reduce its greenhouse gas (GHG) emissions by 26% or up to 41 % with international support, where most reductions will be achieved through REDD+ related activities

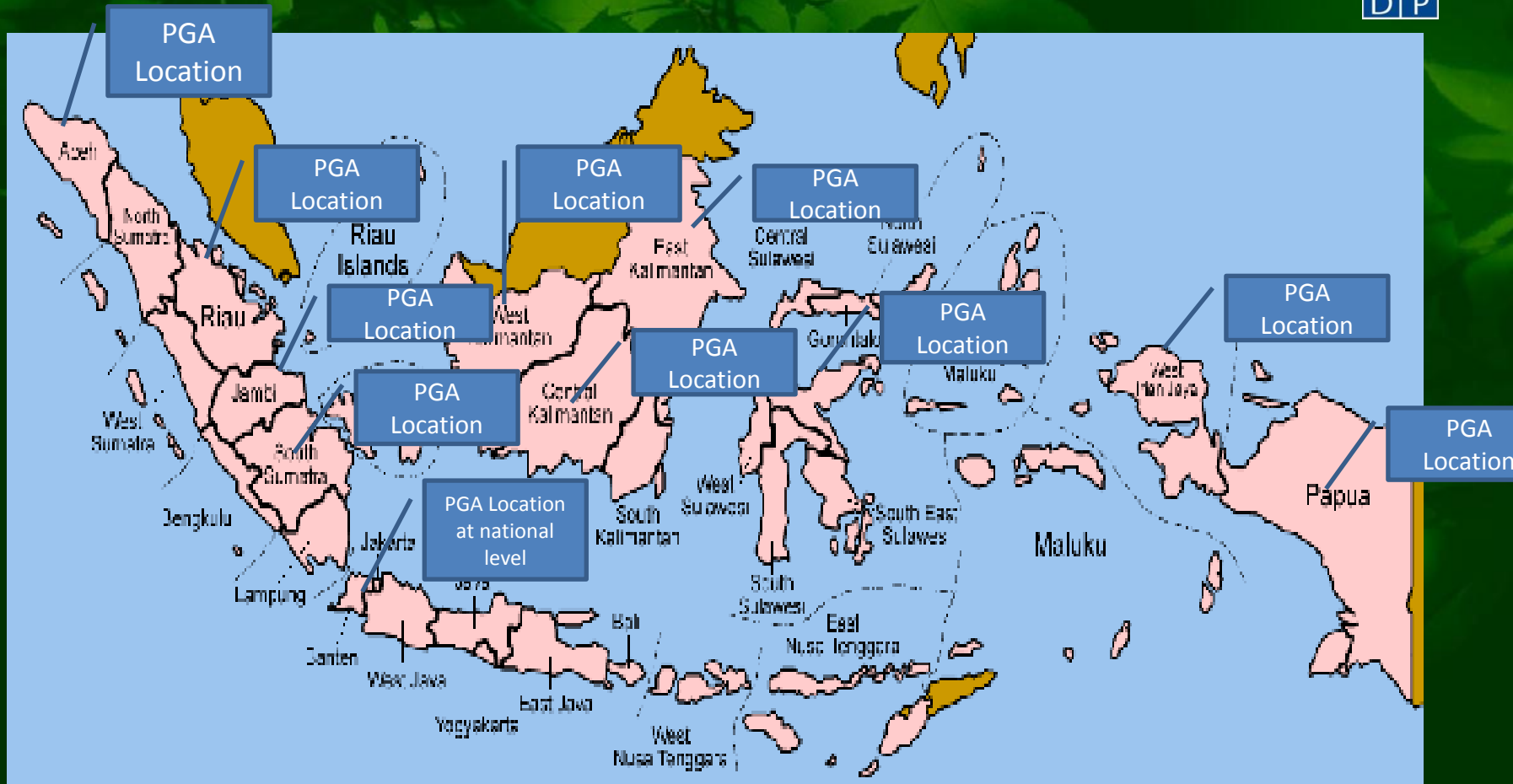
The results of stakeholder consultations conducted by the National Development Planning Agency with the support of UN-REDD Programme Indonesia concluded that the high rates of deforestation and forest degradation are caused by forest governance related issues. The identified forest governance issues:

- (1) spatial planning does not function effectively as a control instrument to ensure equitable and sustainable forest utilization, along with unresolved tenurial issues
- (2) forest management does not function effectively and does not provide a sense of justice
- (3) weak governance in the forestry sector makes it difficult to control rate of deforestation and forest degradation effectively
- (4) legal base for forest management is still sectoral approach and overlaps with other sectors, especially sectors that require land such as mining, agriculture, plantation, agriculture and other development sectors
- (5) corruption in bureaucracy and enforcement agencies prohibit effective supervision and enforcement

Forest Management Issues	Components		
	Law and Policy Framework	Actors' Capacity (Government, Civil Society, IPs and local Community, Business Entity )	Implementation-Performance
Spatial Planning	Indicators	Indicators	Indicators
Rights Regulating	Indicators	Indicators	Indicators
Forest Organizing	Indicators	Indicators	Indicators
Forest Management	Indicators	Indicators	Indicators
Forest Control	Indicators	Indicators	Indicators
REDD+ Infrastructure	Indicators	Indicators	Indicators

# Geographical Focus

UN-REDD  
PROGRAMME



Assessment locations at sub national level are selected based on the size of the forest/peatland cover areas. Whereas, at national level, selection is based on forest management authority

# The Process of PGA for REDD+ in Indonesia



**Consultative meetings with Ministry of Forestry, UKP4, BAPPENAS and Civil Society Organizations** = All key stakeholder agreed that PGA is needed to obtain baseline and accurate interventions on REDD+ governance related issues.

**The establishment of the PGA expert panel** consisting of various background, representative and gender balance. Prof Hariadi (academia), Dr. Sunaryo (Government), MAS Achmad Santosa (UKP4/UNDP), Prof. Sofian (UNDP), Dr. Mryna Safitri (Civil Society), Jossi Katarina (Civil Society), Abdon Nababan (Adat Organization/AMAN), Wiwit (Academia for data collection instrument).

**Intensive discussions amongst the PGA expert panel** members (15 times). The 4<sup>th</sup> Draft REDD+ PGA Indicator set

**Regional consultative meetings** (4 times) **and national consultative meeting** (1 time) = Ensuring participatory approach applied, and inputs taken from wider stakeholder to strengthen the draft of REDD+ PGA framework and indicator set

## PGA Next Steps



1. **REDD+ PGA tools** including indicators and data collection instrument is in final stage for finalization= Deadline for final PGA tools is April 2012
2. **Third Party for providing PGA data collection service** has been recruited. Nine interested bidders had submitted the proposal= data provided by third party is expected in July 2012
3. Analysis, reporting and **policy recommendation formulations** is produced by PGA expert panel = Final report is expected in September 2012
4. **Developing REDD+ governance roadmap** to define and describe the best ways to strengthen forest and REDD+ governance structure and practices produced = the result is expected in Oct 2012
5. **Revising REDD+ PGA tools** including indicators and data collection instruments = the result is expected in Dec 2012



# Challenges Identified in the PGA in Indonesia

UN-REDD  
PROGRAMME



1. Ensuring REDD+ PGA results and instrument will get a **strong buy-in** from government.
2. Having meaningful results **without** naming and shaming the government.
3. **Taking the time** needed to ensure that various stakeholders can recognize themselves in the assessment, which enhances the level of **ownership**.
4. **Balancing the number of indicators** between incorporating stakeholder interests and developing efficient the indicators set.

Thank You Very Much/Terima Kasih Banyak

**UN-REDD**  
PROGRAMME

