

# **UNEP UN-REDD Team Retreat: Main developments 2013 and 2014**

**Nairobi, Kenya**  
13-16 January 2014





## UNEP's main REDD+ achievements 2013

1. New National Programme development supported: Argentina, Colombia, Cote d'Ivoire and Bangladesh
2. New and ongoing TS: Argentina, Bhutan, Costa Rica, Kenya, Mexico, Myanmar, Sudan, Uganda
3. Regional workshops on safeguards and multiple benefits
4. Revised BeRT (Benefits and Risk Tool), and Country Approach to Safeguards Tool (CAST)
5. REDD+ in Green Economy Global Symposium and IRP report (publication in March 2014)
6. Global Forest Watch (launch in February 2014)



## Priorities in 2014

1. Need to deliver on additional Norway funding: *Private Sector Engagement (UNEP FI); REDD+ Academy; Illegal Logging in East Africa project; Safeguards Coordination*
2. Development of a +2015 Strategy (2016-2020) and 2015 SNA budget development
3. Increase capacity to support countries, and improve impact and visibility of SNA at national level
4. South-South Cooperation



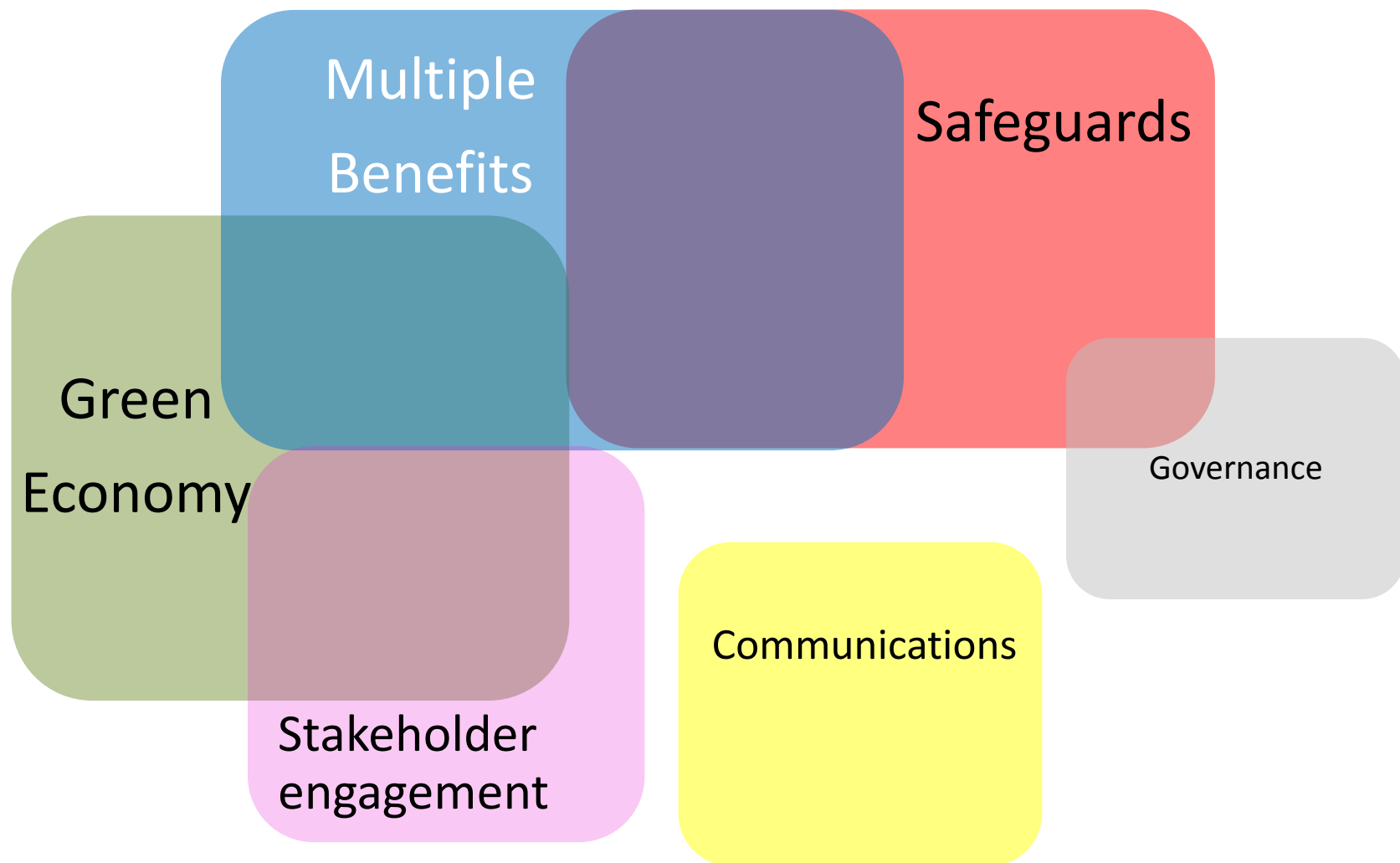
## Priorities in 2014

1. Need to deliver on additional Norway funding: *Private Sector Engagement (UNEP FI); REDD+ Academy; Illegal Logging in East Africa project; Safeguards Coordination*
2. Development of a +2015 Strategy (2016-2020) and 2015 SNA budget development
3. Increase capacity to support countries, and improve impact and visibility of SNA at national level
4. South-South Cooperation

# SNA highlights in coming 6 months

Product	Launch date	Summary
Global Forest Watch ( <i>no SNA funding</i> )	February 2014	New global deforestation alert (every 16 days) and analysis tool; free and easy access (no GIS training required)
Business Case for Sustainable Landscape Investments	February 2014	Study with EcoAgriculture Partners on economic viability of integrated landscape management
T21 model for DRC	21 March 2014	Sustainable development scenarios for DRC with and without REDD+
Building Natural Capital: How REDD+ can Support a Green Economy	21 March 2014	Flagship publication for REDD+/GE linkages, and first in series of publications and support tools for national level REDD+/Green Economy synergies
REDD+ Sourcebook	April 2014	Course material for Universities on REDD+; to be used by UNEP's 370 partner Universities
REDD+ Legal Preparedness Manual	March/April 2014	Basic guide for legal practitioners and Parliamentarians on REDD+ legal reforms
National forest ecosystem valuation studies	June – October 2014	Zambia, Tanzania, RoC, Indonesia, Panama: making the economic case for REDD+ and forest conservation/SFM
Forests for a Green Economy: Africa report	December 2014	Building on UNEP Green Economy report/forest chapter: economic opportunities for Africa

# Activities in Africa



# UN-REDD Africa workshop

UNON, 17-19 September 2013



## Safeguards: how to include safeguards in REDD+ planning; development of a Safeguard Information System

### Priority concerns

- Enhancing PLRs;
- Further work on Cancun and FCPF safeguards;
- Consulting stakeholders.

### Follow up actions requested

- Support to Côte d'Ivoire (TS) and Kenya;
- Support to Uganda (TS) to elaborate preparation documents.

## Multiple benefits: how to enhance multiple benefits/mitigate risks in REDD+ planning; use of spatial planning tools

### Priority concerns

- Collecting more reliable spatial data, involving local communities;
- Training technical people in country;
- Accessing GIS software.

### Follow up actions requested

- Ethiopia asked for support on getting spatial data for East Africa;
- Uganda asked WCMC to highlight the use of international data at the national level

## Africa: On the Horizon in 2014

Increase multi-sectoral engagement

**More staff!!**

Post-2015 added value in countries

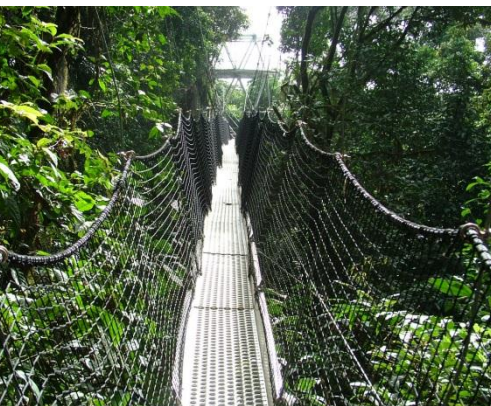
Reduce transaction costs and improve working modalities

Opening and closing programmes

Veritable, 'jurisdictional' success stories in all thematic areas

Engagement for post-NP determined (eg. DRC and TZ)

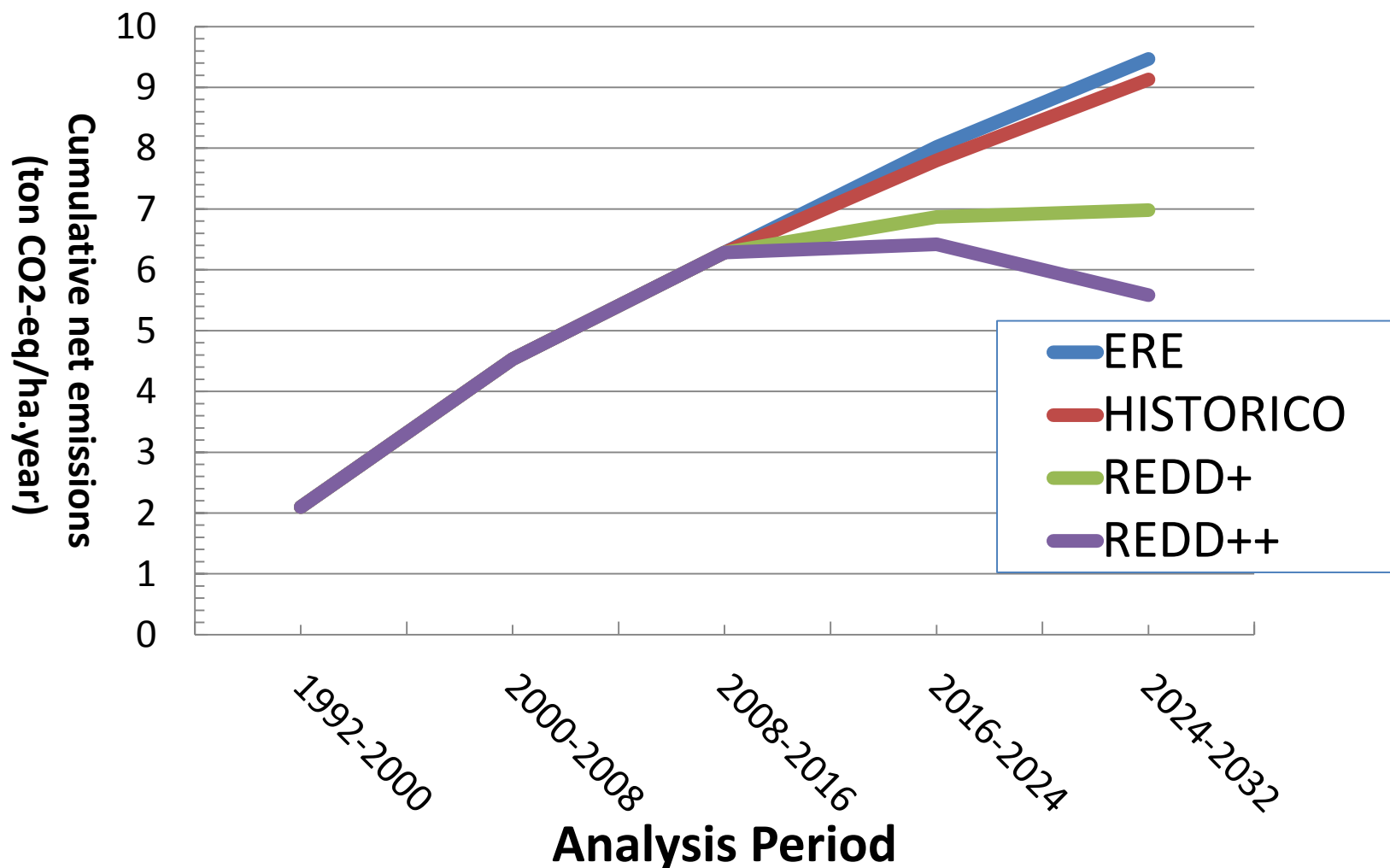
**Demonstrate results and impacts**





# LAC: REDD+ could achieve important results

Cumulative Net Emissions in Panama 1992 – 2032, by Scenario



## LAC: For 2014 and beyond...

1. The cost and benefit data show that “Green economy” policies will be key for REDD+. But, what is our protocol to go about selecting and promoting these policies?
2. Involvement of private sector and financing of pilot phases of REDD+ will be as critical as supportive Green Economy policies. However, timing is not easy due to the slow implementation of NJPs.
3. These two areas requires the kind of all-out support that was given to multiple benefits and safeguards 3 years ago.
4. There is already some “REDD+ fatigue” in countries coming from lack of incentive payments and ever growing complexity. UNEP should contribute to revert this sentiment by ensuring that its contributions are focussed and with obvious and direct practical applications.

# Lessons learned Asia Pacific

- Awareness on REDD+ remain weak throughout countries; continues to be mixed up with UN-REDD
- REDD+ strategies developed in Indonesia, Philippines and Viet Nam
- Functional and active working groups only in Viet Nam; to be set up soon in Cambodia and Sri Lanka
- Cross-ministerial coordination remains weak; weak private sector involvement
- Unfulfilled high expectations have lead to fatigue in some countries
- UN-REDD Programme is viewed in many countries as a forestry project; interest in work on multiple benefits and green economy is limited

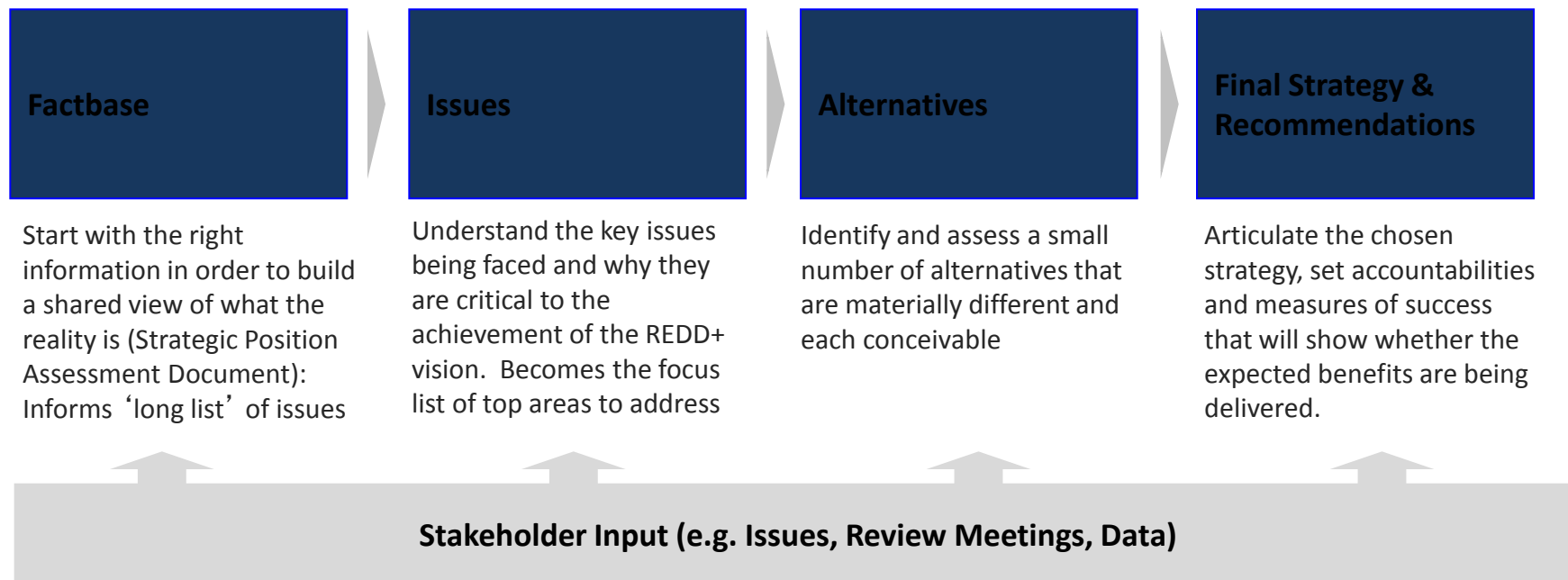
# National Programme status – Viet Nam

Issues	Status	Projection
Management Structure	Management Structure is being established at both National and sub-national levels, but not yet full functioning - recruitment being the most concerned; PIM is being developed	Recruitment for all offices is expected to complete in the first-half 2014; PIM get approved;
Administrative / Funding	Slow progress, SSFA not yet signed; no fund transfer in 2013	SSFA to be signed & first installment is expected in early 2014; A practical approach for this large scale programme (UNEP: US\$ 4.268 mil);
UNEP focus areas	(1) Communication & awareness raising: draft ToR for compiling REDD+ communication strategy & plan	Communication strategy & plan to be ready in Q1 to facilitate the implementation
	(2) Environmental safeguards: 2 <sup>nd</sup> draft roadmap available;	Development of framework and indicators; Follow-up at both national & sub-national level
	(3) REDD+ Planning: draft concept note for supporting REDD+ planning	Integration in the REDD+ planning process at sub-national levels (collaboration with FAO & UNDP)
	(4) Regional cooperation: ?	

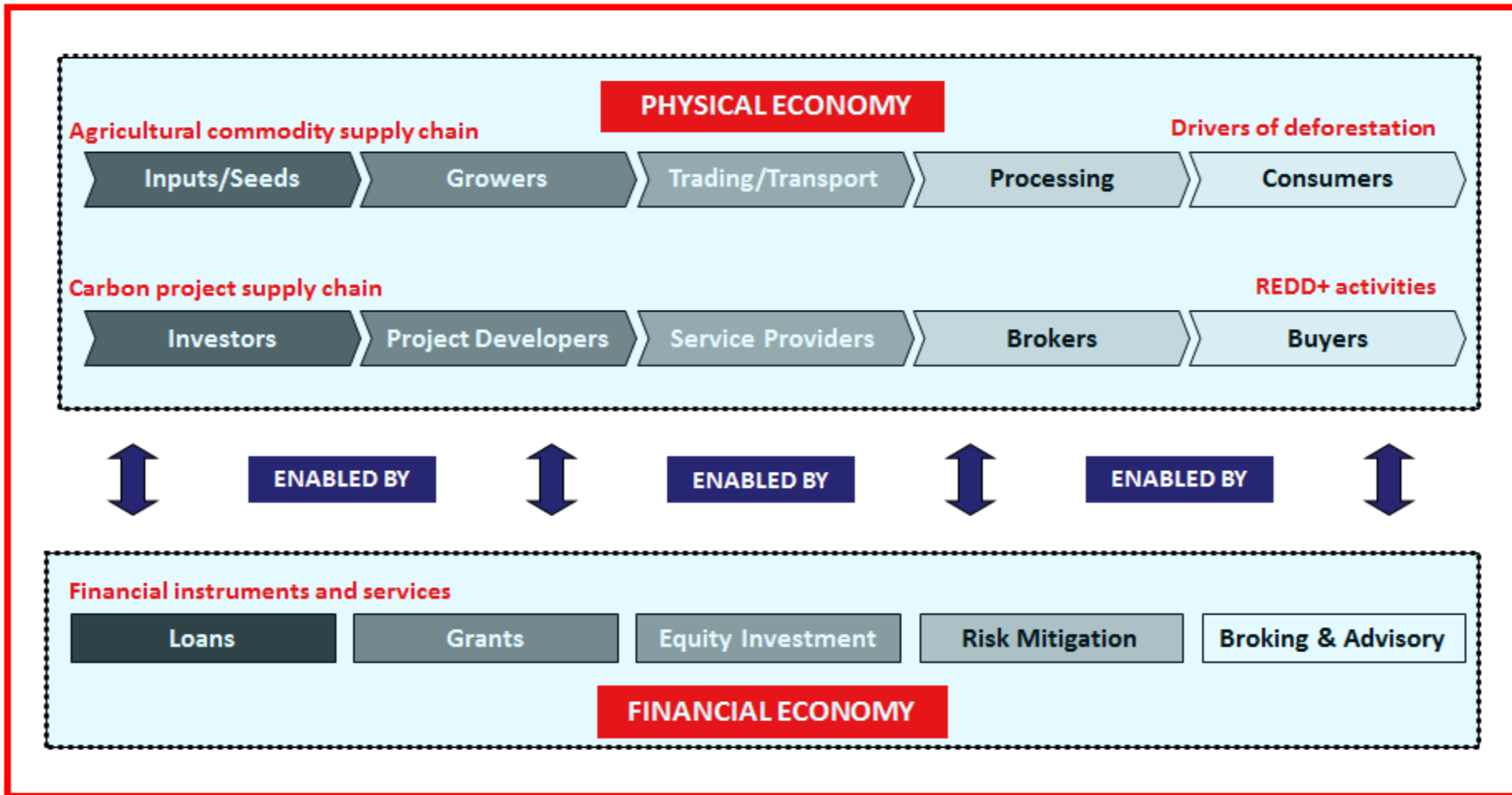
# Private sector strategy development

## A typical approach and framework to strategy development

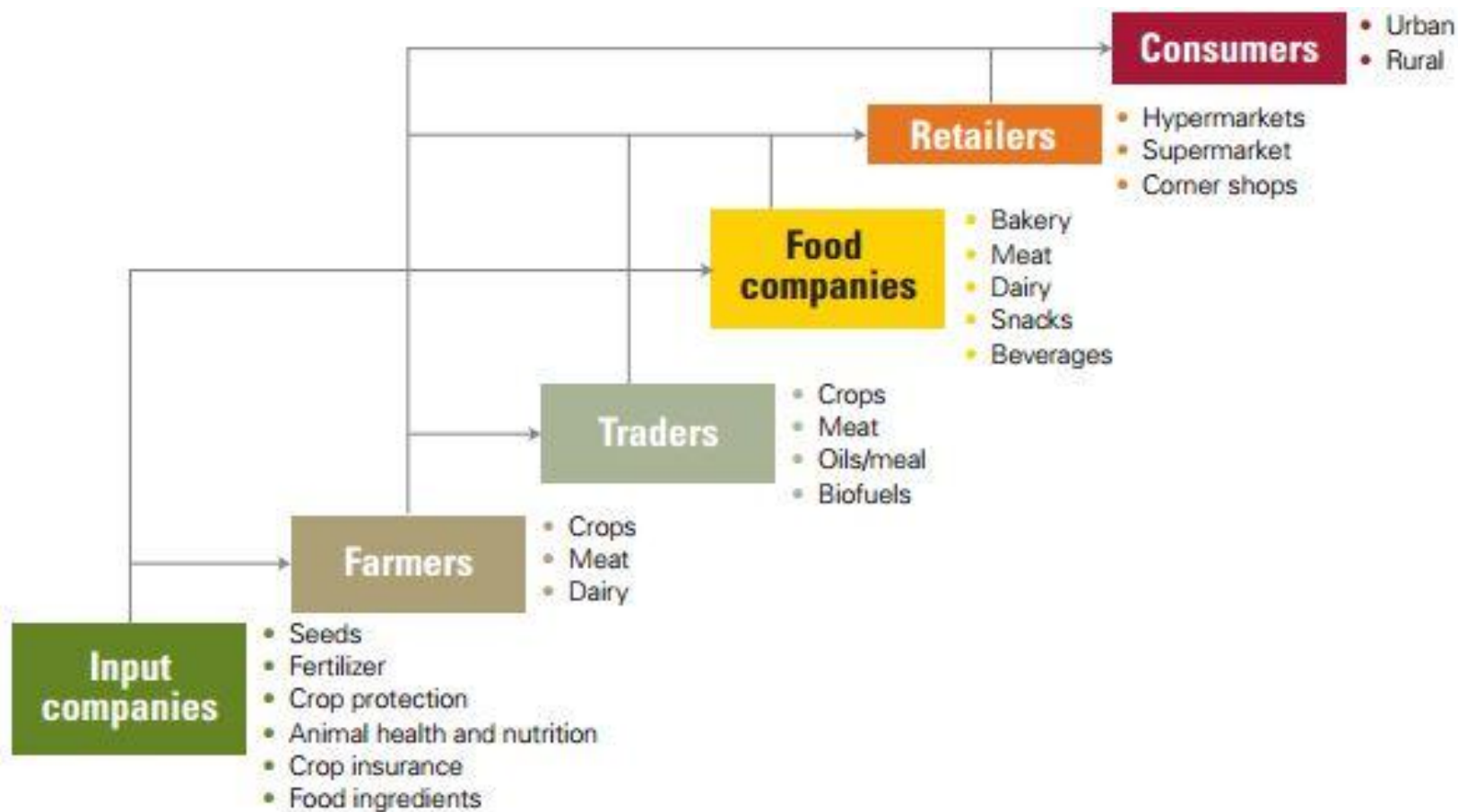
*Strategy development is a structured approach that engages and aligns stakeholders to a common set of prioritised outcomes and actions*



# Private sector proposal



# Agriculture and Food Value Chains



# Moving from the conceptual to the practical

## Identifying, classifying & prioritising private sector activities

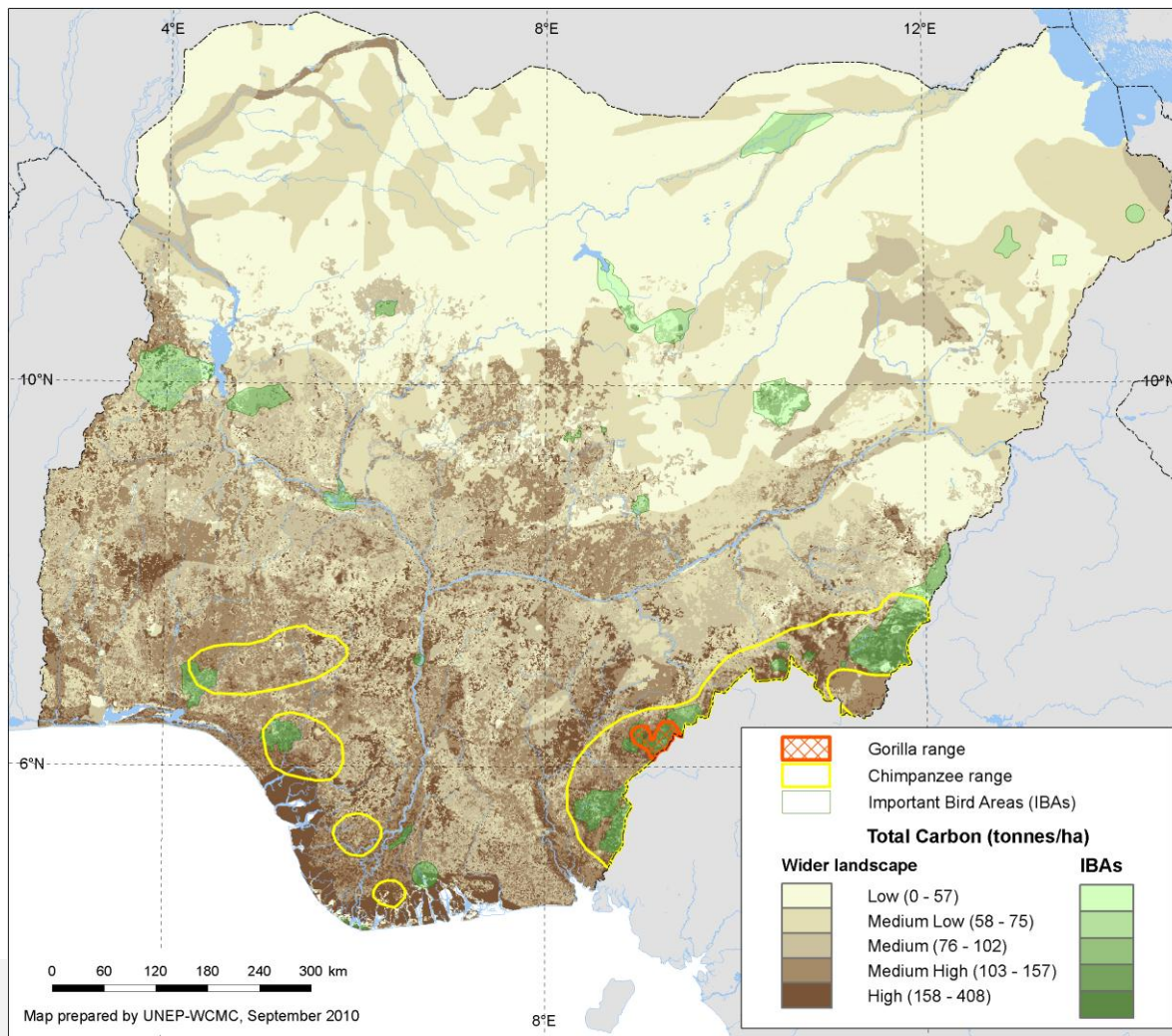
Activity	A	B	C	D	E	F
GHG abatement potential	Green	Red	Green	Green	Yellow	Green
Scalability	Green	Yellow	Green	Green	Red	Green
Ease of implementation	Blue	Green	Green	Blue	Green	Green
Community and gender benefits	Blue	Green	Green	Green	Blue	Green
Commercial viability	Blue	Blue	Blue	Green	Blue	Green
Private sector finance required	Blue	Red	Blue	Blue	Green	Blue
Unit size of investment	Green	Blue	Blue	Green	Green	Green
Land tenure	Blue	Blue	Blue	Green	Red	Blue



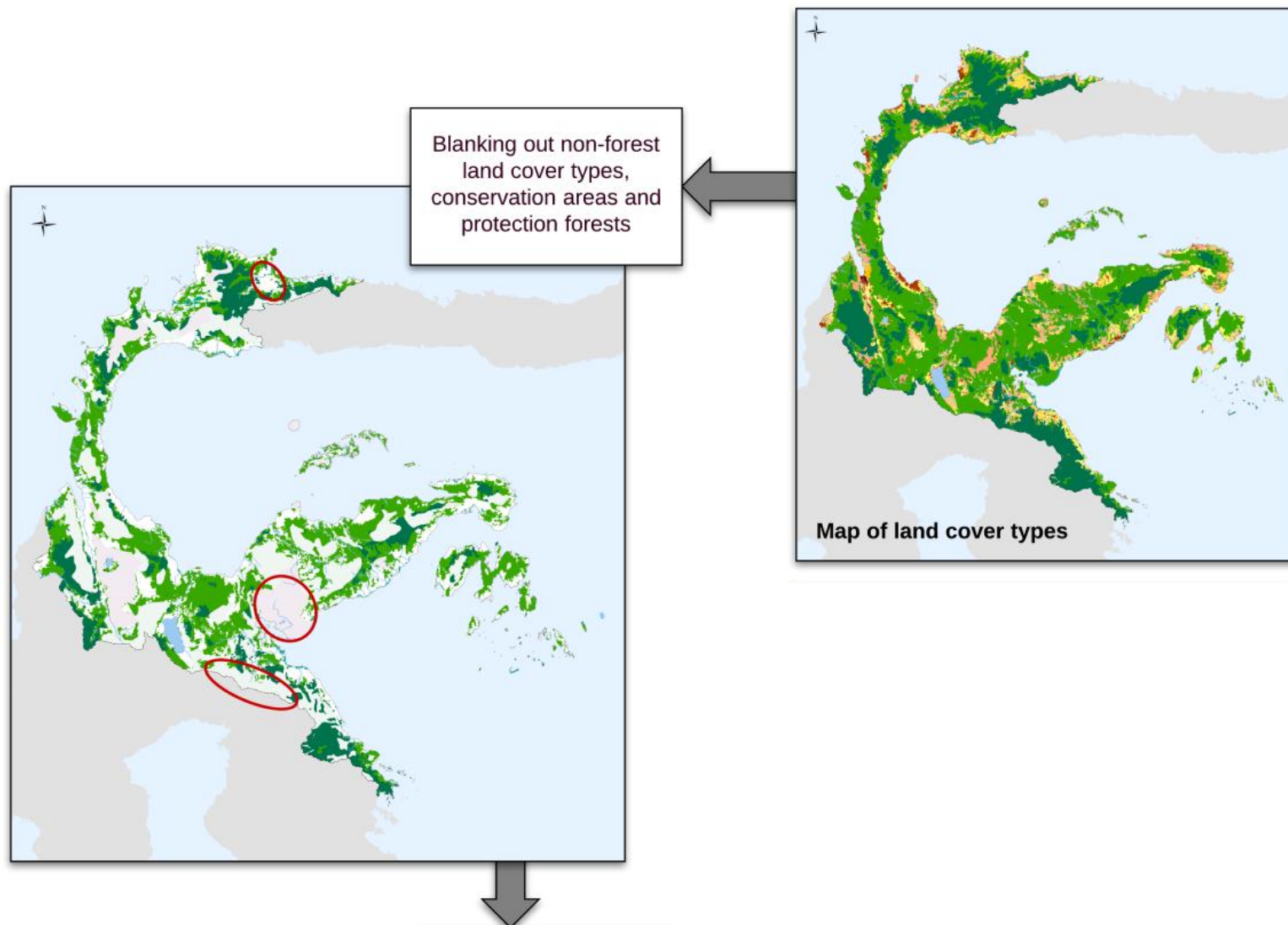
## Multiple Benefits: Move to REDD+ spatial planning

- Simple overlays raise awareness of potential for multiple benefits
- Ongoing work to help identify, **prioritise and value** multiple benefits and **support decision making and safeguard implementation**
  - **Opportunities for & feasibility** of REDD+ activities & actions
  - Incorporate **additional ecosystem services** and their interrelations
  - **Address safeguards**
  - **Place options in context of scenarios & deforestation risk, and economics**

# Simple overlays raise awareness

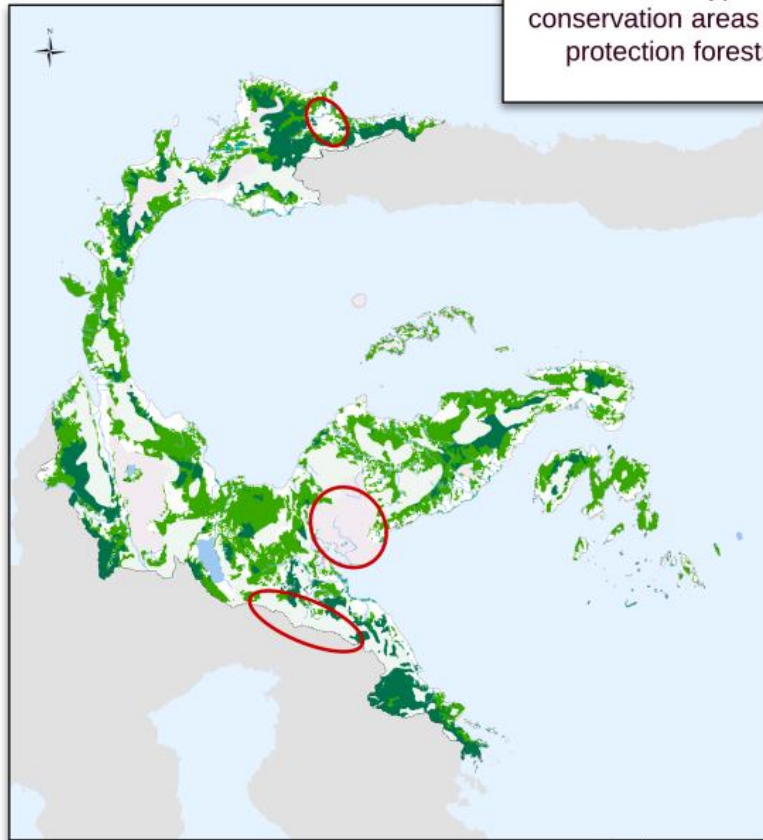


# Identifying opportunities for REDD+ activities and actions

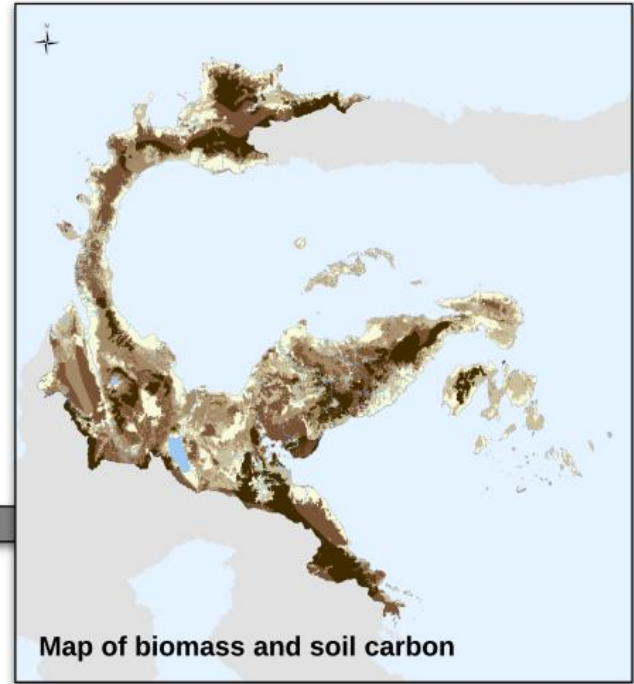




land cover types,  
conservation areas and  
protection forests

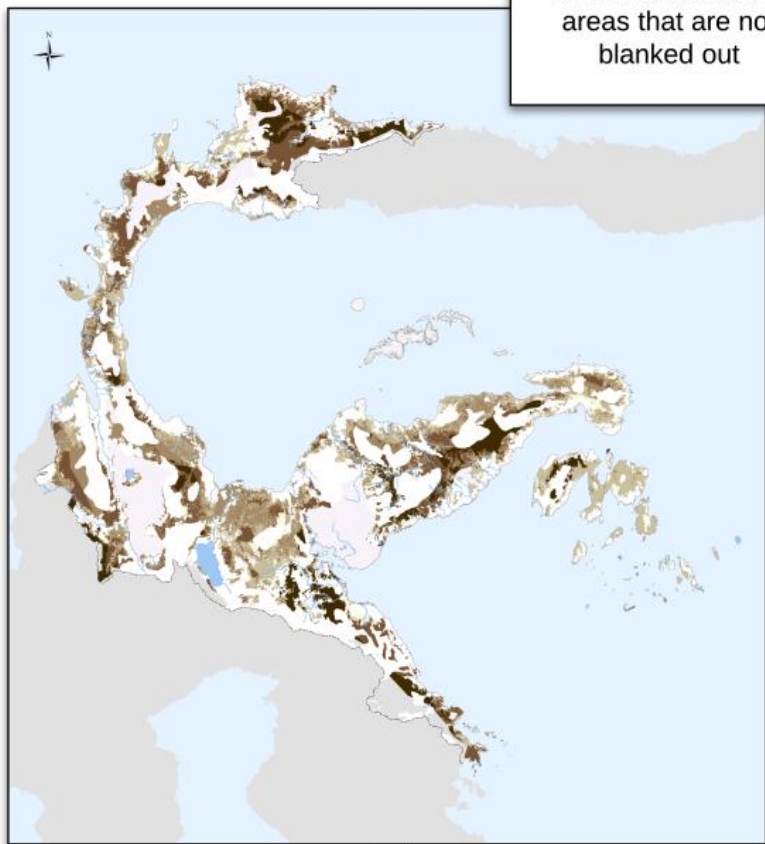


Displaying information  
on carbon stocks in  
areas that are not  
blanked out

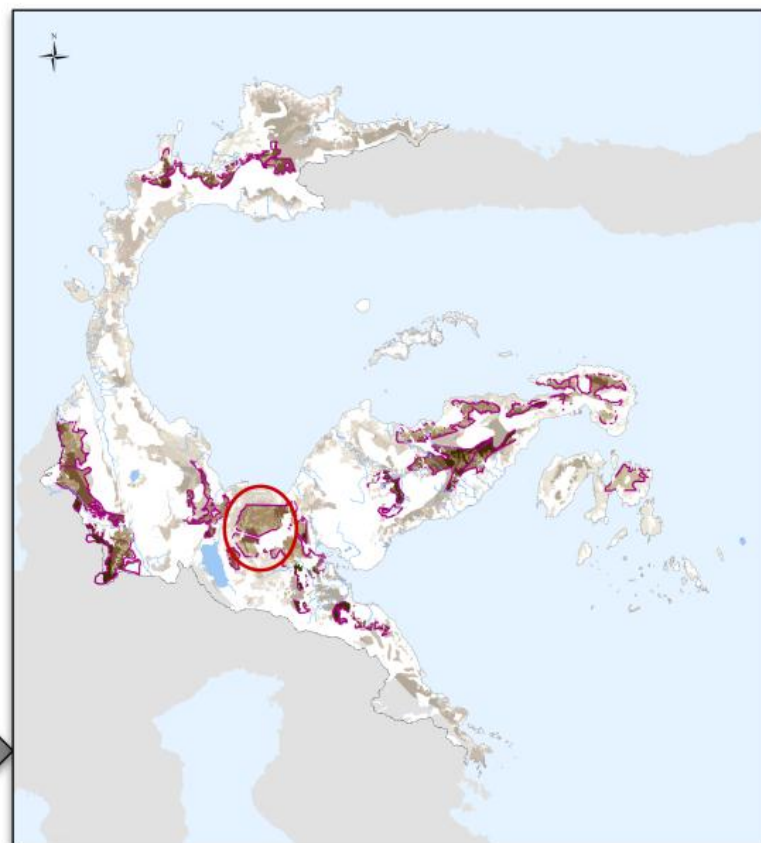


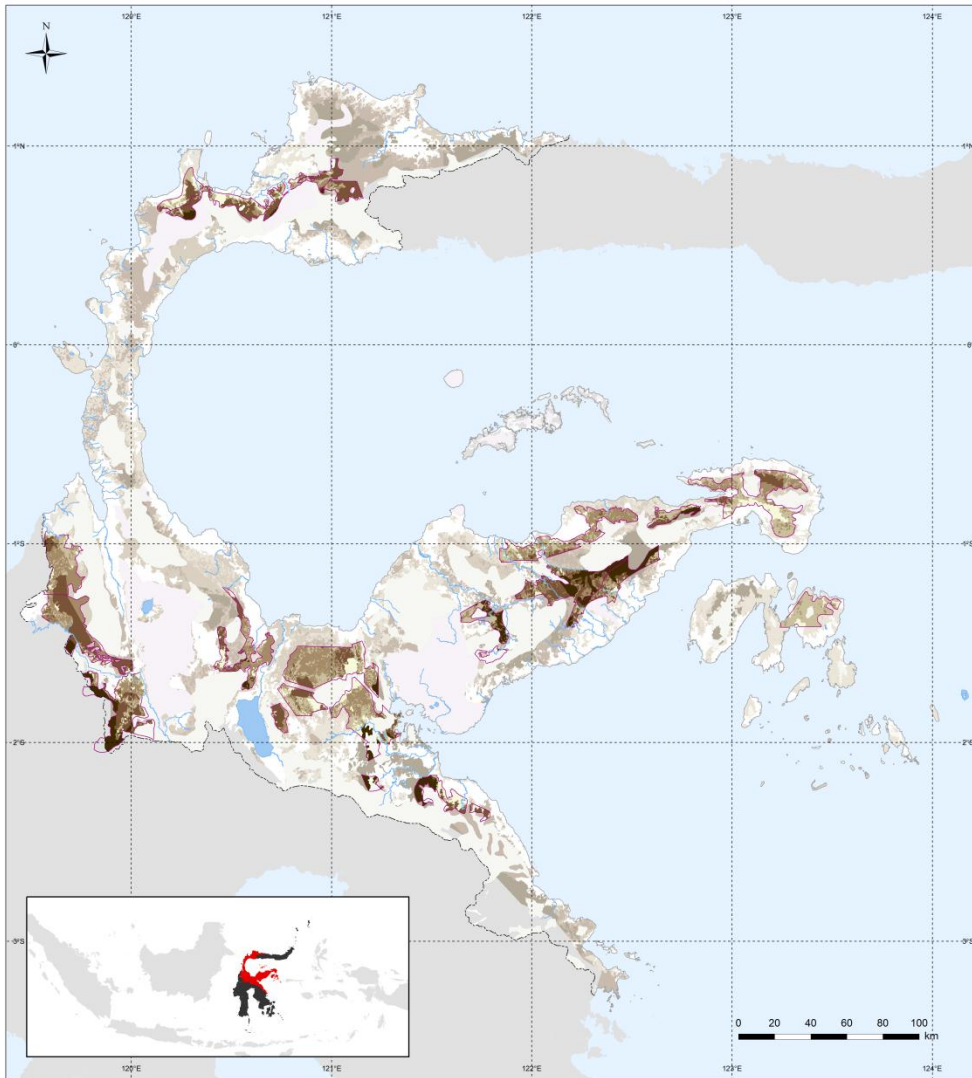
Map of biomass and soil carbon

Displaying information  
on carbon stocks in  
areas that are not  
blacked out



Highlighting forest  
concessions





Potential for sustainable management of forests

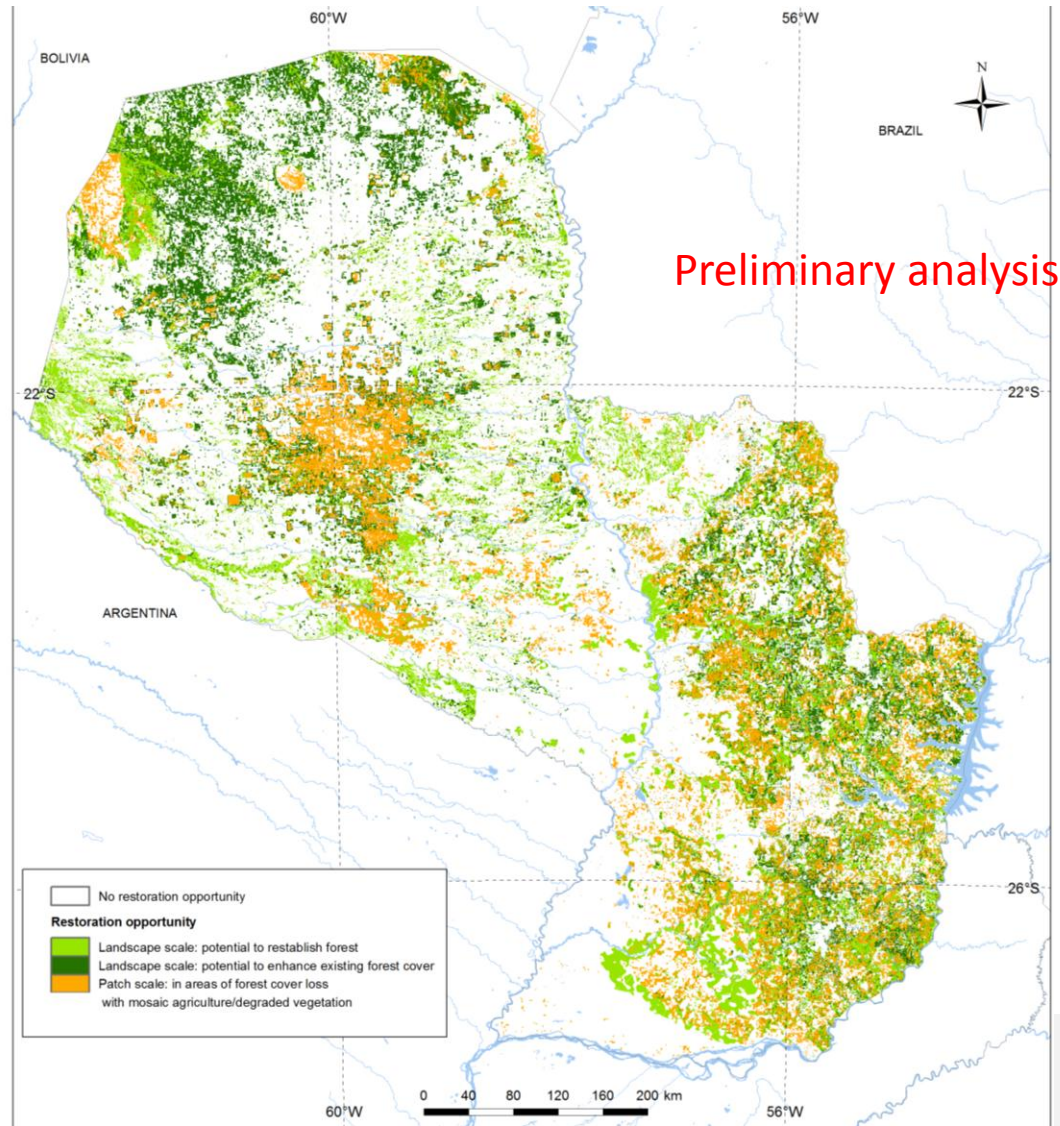
**Total Carbon (tonnes/ha)**

within Timber Concessions

- Low (0 - 130.24)
- Medium Low (130.24 - 232.55)
- Medium (232.56 - 292.4)
- Medium High (292.41 - 330.81)
- High (330.82 - 409.61)
- Timber Concession boundary

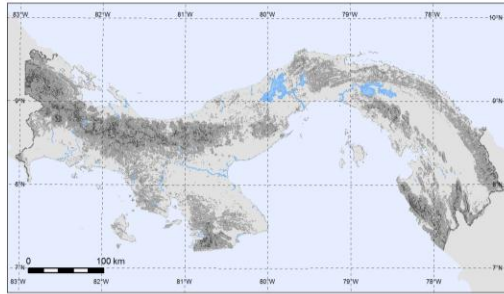
**Sustainable management of forests**

# Potential for restoration of degraded forest

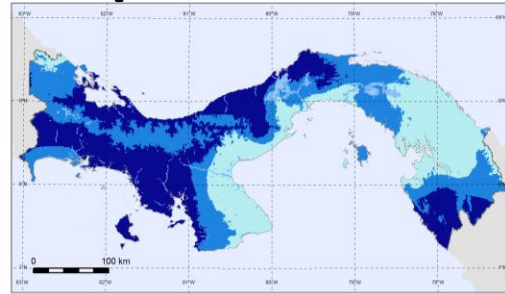




# New Ecosystem services: Control of potential sedimentation risk



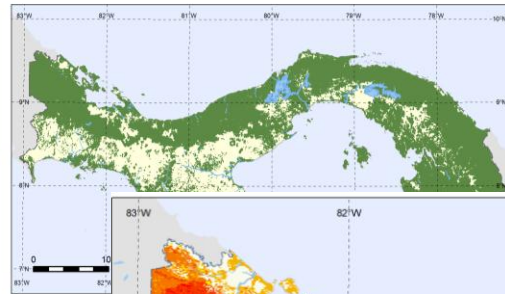
3 Slope classes (°)  
 0 - 4    4 - 16    > 16



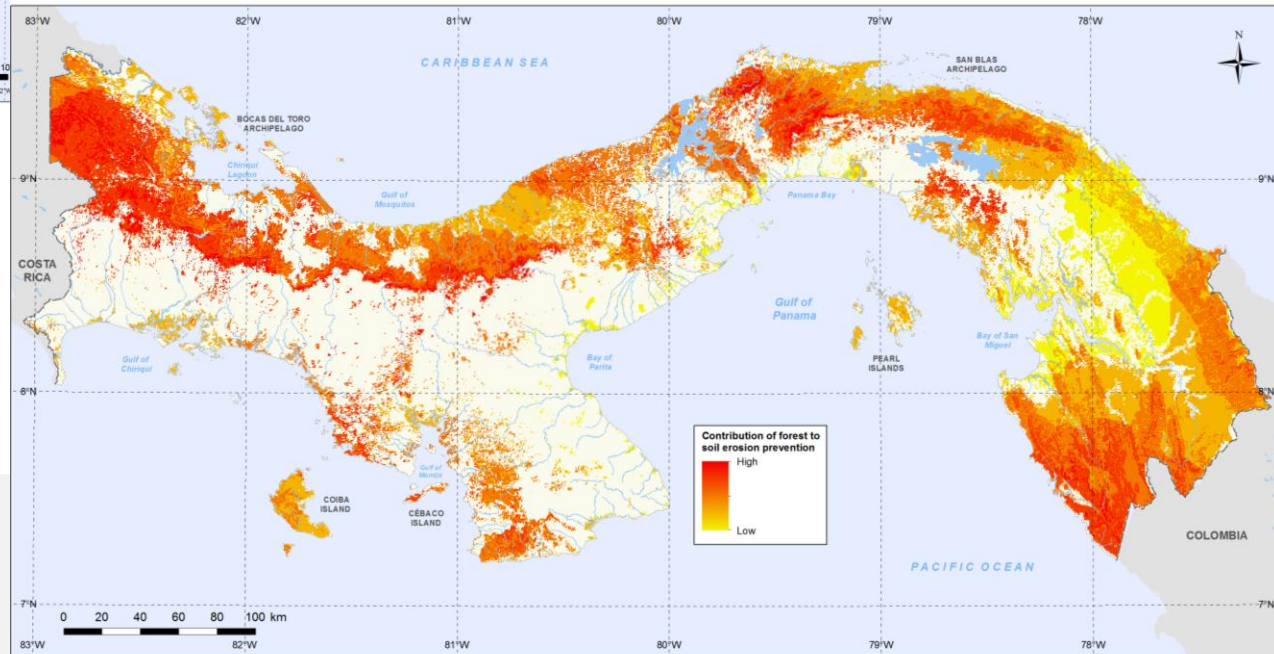
3 Precipitation classes (May - Aug -mm)  
 109 - 240    241 - 313    314 - 459



Upstream catchments and dams  
 ▲ Dams    □ Upstream catchments    ■ Water bodies    □ River basins



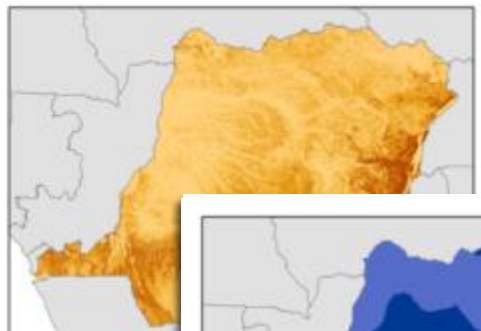
Forest cover  
 ■ Forests



Contribution of forest to soil erosion prevention  
 High  
 Low

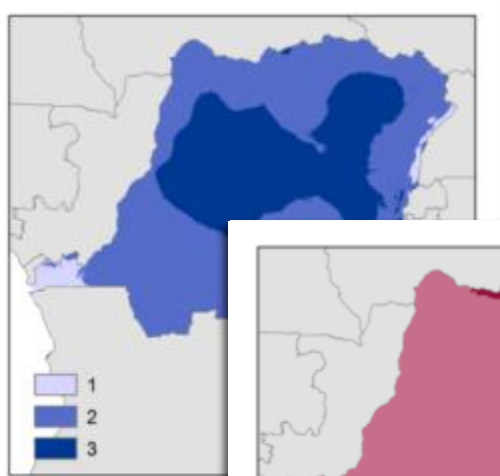


# New Ecosystem services: Control of potential sedimentation risk to hydroelectric dams -DRC



0-5%  
5-15%  
>15%

Map 1b - Classes



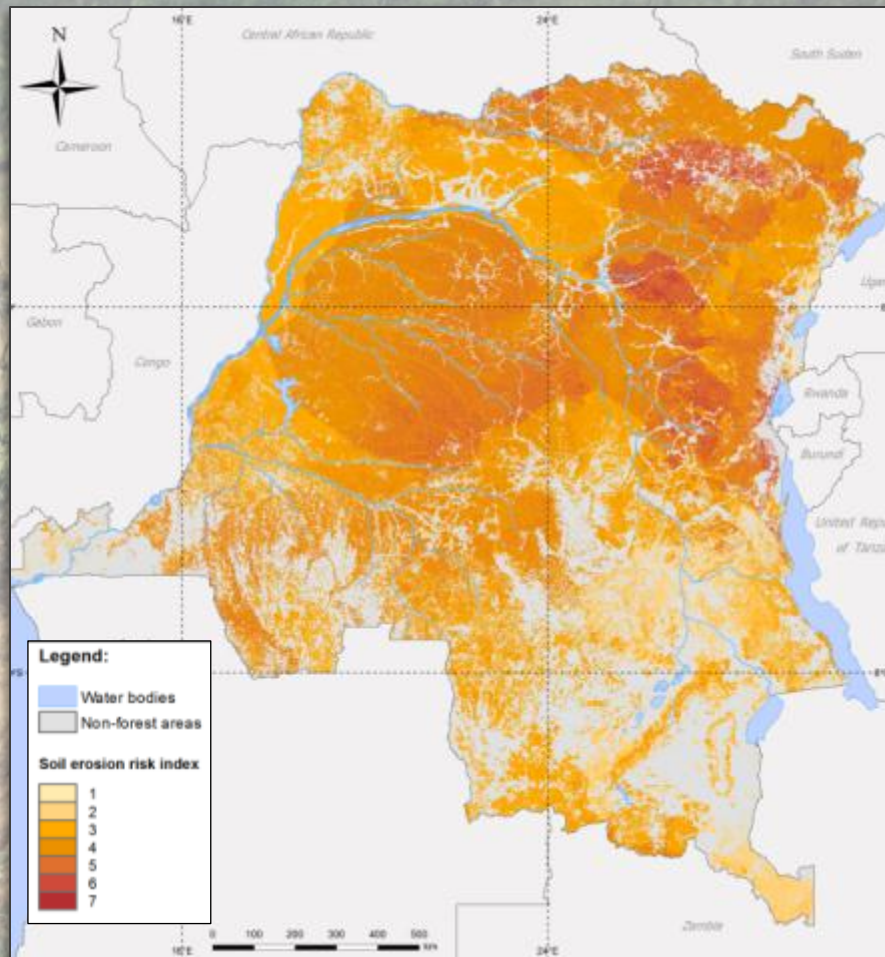
1  
2  
3

Map 2b - Classes of p



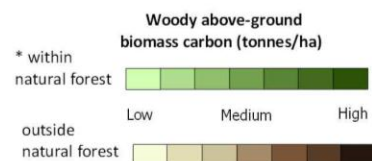
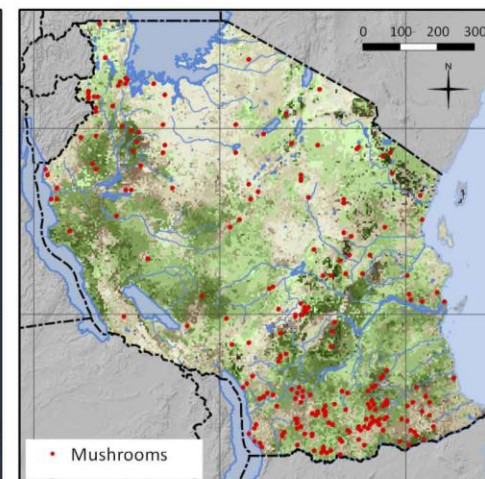
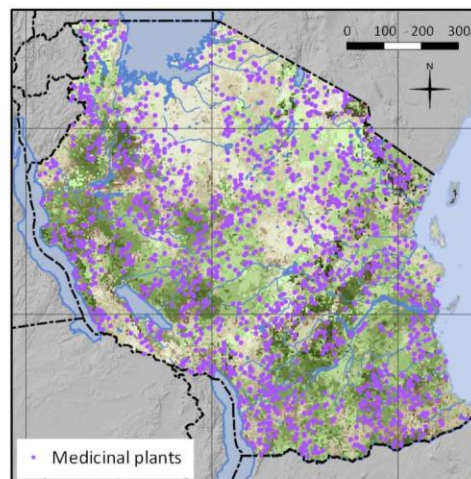
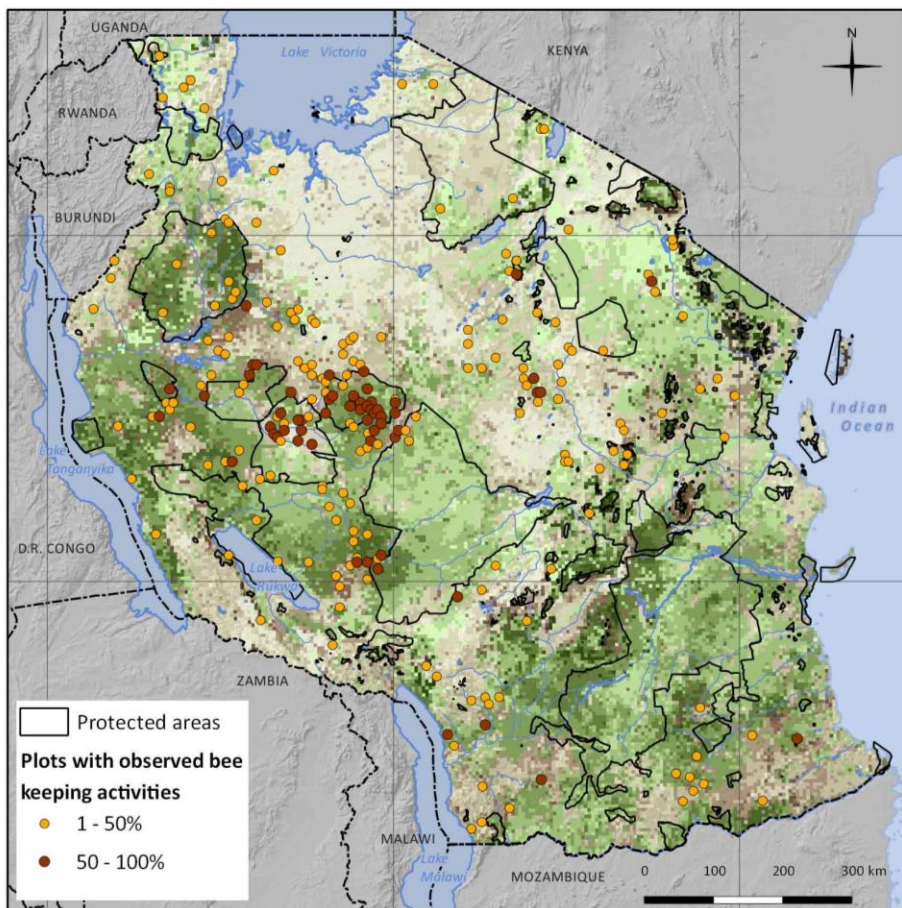
0  
1  
2

Map 3b - Number of dams per catchment



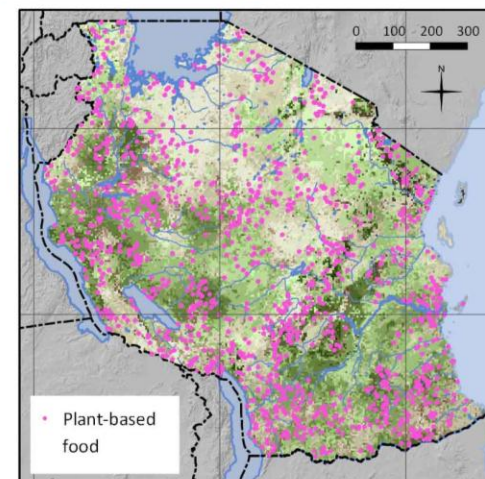
**Legend:**  
Water bodies  
Non-forest areas  
**Soil erosion risk index**  
1  
2  
3  
4  
5  
6  
7

# New Ecosystem services & data sources Tanzania – Non-timber forest products



\* Defined according to the national forest definition to include the following land cover classes: montane and lowland forest, open and closed woodland, mangroves, thickets and bushlands.

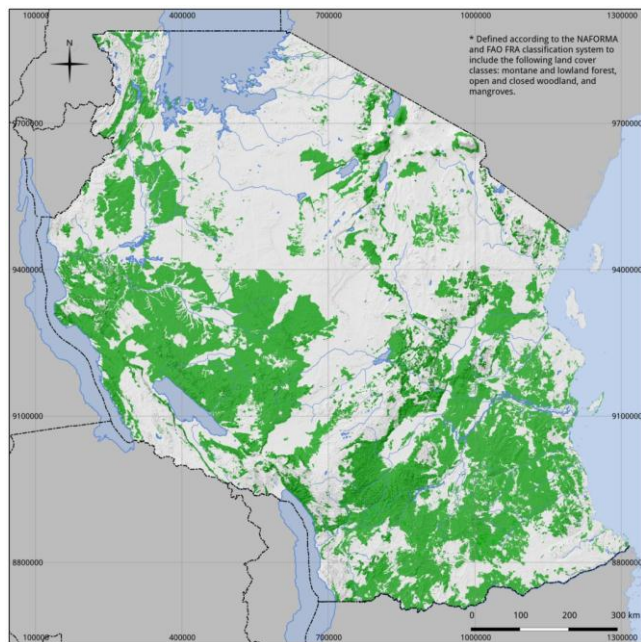
Map projection: WGS84 / UTM Zone 36S. Map prepared by Tanzanian Forest Service (TFS), UNEP-WCMC, FAO, Sokoine University of Agriculture (SUA) and Forestry Training Institute (FTI). Date: May 2013.



Data sources:  
 Natural forest: NAFORMA. 2013. NAFORMA land-use / land-cover Map 2010.  
 Woody biomass carbon: NAFORMA. 2013. NAFORMA Woody biomass only, 5km preliminary dataset based on field data.  
 Observed non-timber forest products: NAFORMA. 2013. NAFORMA biophysical survey 2013.  
 Forest reserves: Tanzanian Forest Service. 2013. Forest Reserves of Tanzania.  
 Protected areas: IUCN and UNEP-WCMC. 2013. The World Database on Protected Areas (WDPA) Cambridge, UK. Available at: [www.protectedplanet.net](http://www.protectedplanet.net).

# Supporting safeguards

## Natural forest estimation - Tanzania

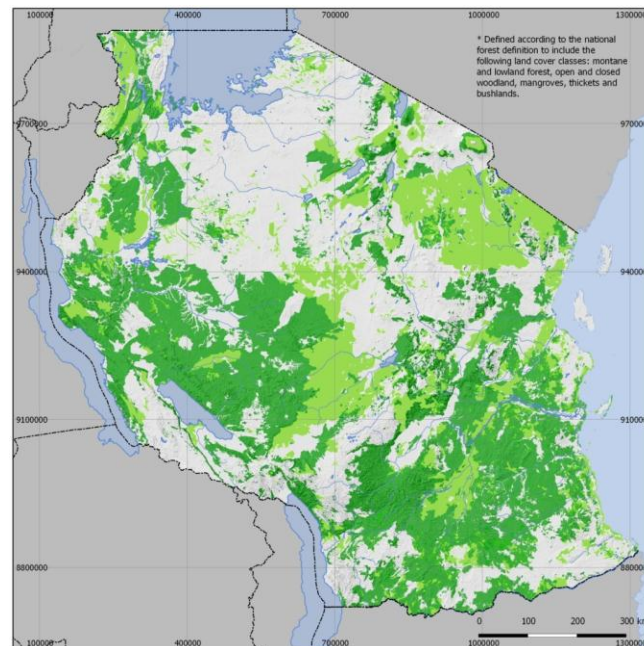


Map source: Derived from landcover classes in NAFORMA landuse landcover map 2010.

### FAO FRA

(10% canopy cover + 5 m height)

- Montane & lowland forest
- Woodland
- Mangrove

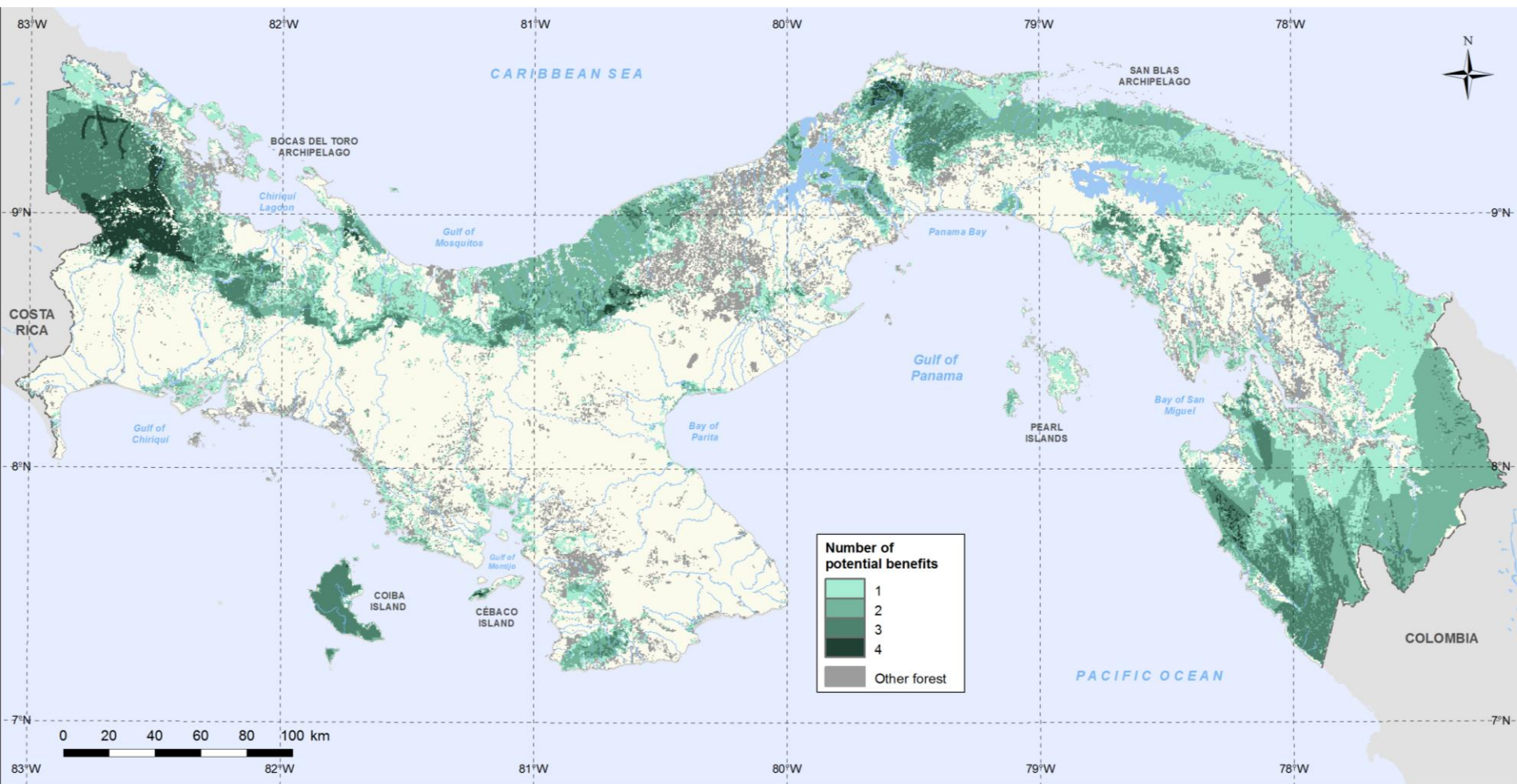


### National definition of forest

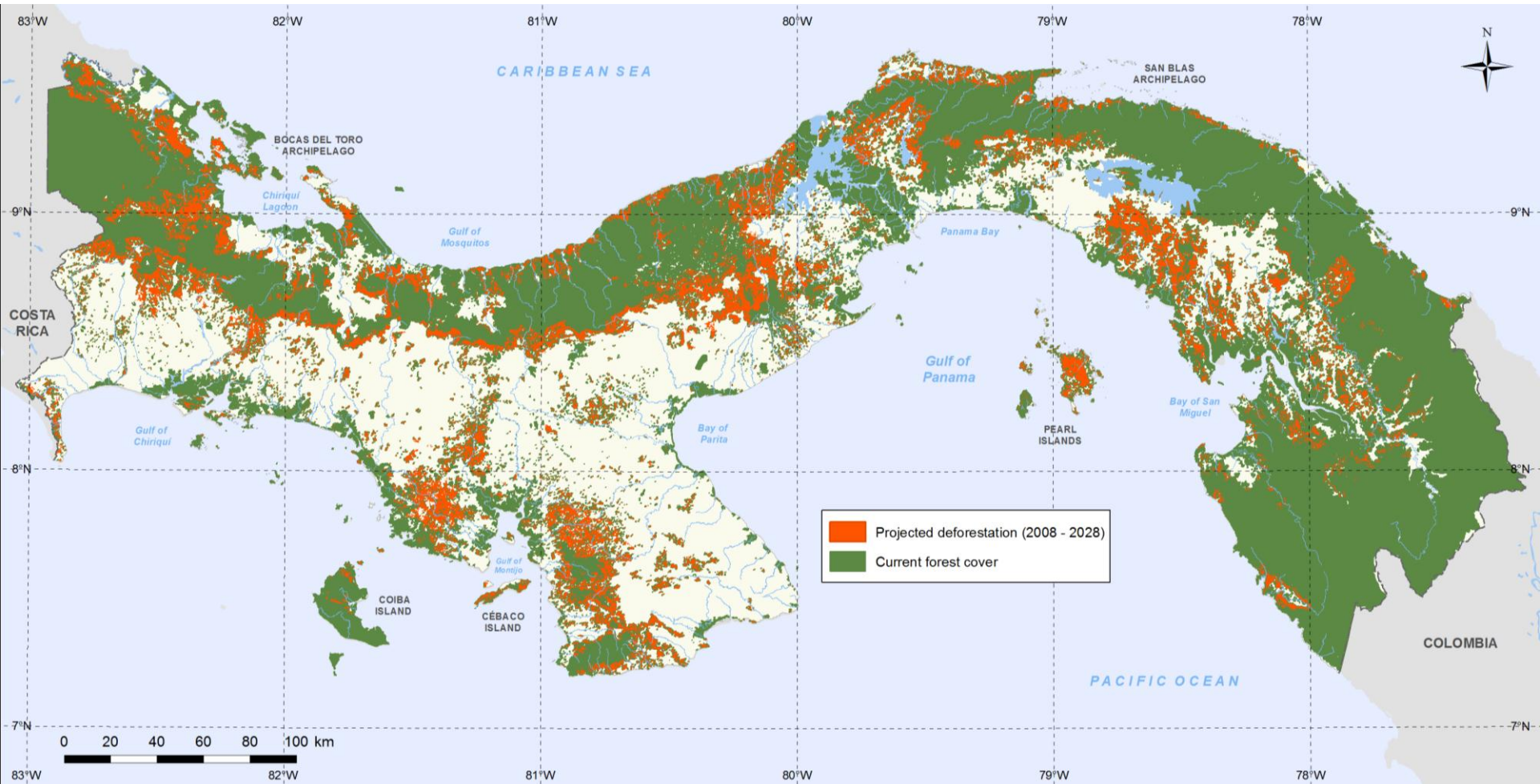
(10% canopy cover + 2 m height)

- Montane & lowland forest
- Woodland
- Mangrove
- Bushland (>2m)
- Thickets (>2m)

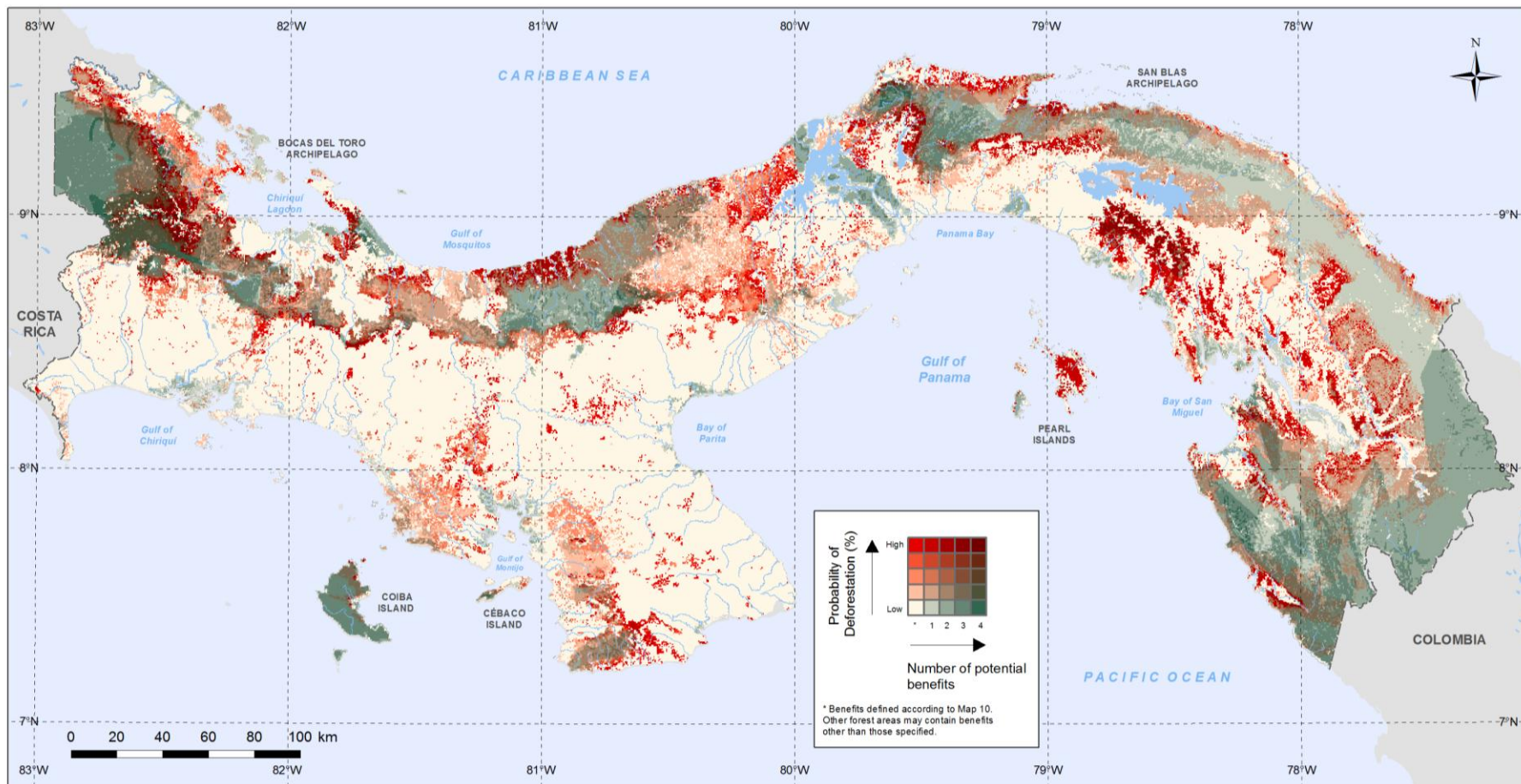
# Decision Support Multiple Benefits



# Decision support: Deforestation scenarios - Panama



# Decision support: Risk to forest areas of potential importance for multiple benefits



# Decision support: Economic considerations

- Developing economic analyses for REDD+ planning, including **guidance** and capacity building on application and use. Includes thinking on valuation, REDD+ costs and integrated analysis.

**2 options:** a **basic approach**, which will provide guideline estimates of costs and benefits; as well as a more thorough **advanced approach** which should provide much more accurate valuations.



# New staff capacity (Regional staff)

Post	Incumbent	Main responsibilities	Reporting
Regional Technical Advisor, Africa	Daniel Pouakouyou (4 March)	Coordinate support to African countries (National Programmes and Targeted Support)	Desta Mebratu (ROA) and Tim C.
Regional Programme Officer	Daniela Carrion	Support RTA in LAC, and support (Tier 2) activities in Ecuador	Gabriel Labbate
Regional Programme Officer (temporary post)	To be recruited	Support RTA in AP/Bangkok	Thomas Enters
Regional Programme Officer	Thais Narciso	Support RTA in Africa and support Legal Preparedness and Special Events (HQ functions)	Daniel Pouakouyou and Tim C.
National Officer, Viet Nam	Phuong Ngyuen	Support Phase 2/Tier 2 project in Viet Nam	Thomas Enters
Programme Officer	To be recruited	Support NJP in Rep. of Congo; support regional activities	Daniel Pouakouyou
Programme Officer (temporary post)	To be recruited	Support activities in Congo Basin	Daniel Pouakouyou
Senior Programme Officer	Johan Kieft	UNORCID staff (secondment): Head of Green Economy Unit	Satya Tripathi (Director, UNORCID)



# New staff capacity (SNA staff)

Post	Incumbent	Main responsibilities	Reporting
Green Economy Advisor	To be announced	Lead Green Economy (Work Area 6) and support Private Sector Engagement	Tim C. and Pushpam Kumar (Ecosystem Economics Unit)
Safeguards Coordinator (temporary post)	To be recruited	Coordinate UN-REDD work on safeguards (based in Geneva)	Tim C.
Knowledge Management Officer (temporary post)	Suzannah Goss	Communicate Programme products and progress widely; coordinate knowledge management	Tim C.
Programme Officer (UNEP FI, temporary post)	To be recruited	Implement Private Sector Engagement work stream	Head, UNEP FI
Programme Officer (UNEP FI, temporary post)	To be recruited	Implement Private Sector Engagement work stream	Head, UNEP FI
Programme Officer (temporary post)	To be recruited	Coordinator, REDD+ Academy	Mahesh Pradhan
Finance Officer (temporary post)	To be recruited	Coordinate finance and HR	Tim C.
UNEP-WCMC		<i>See update from UNEP-WCMC</i>	Val Kapos/Lera Miles

Tim Christophersen

Tim.Christophersen@unep.org

**Thank You**

Website: <http://www.un-redd.org>

