



# Papua New Guinea's experiences on developing the National Forest Monitoring Portal

Workshop Document

09-11 October 2013, OCCD



1. **Objectives and Outcomes**
2. **PNG UN-REDD Programme**
3. **National Monitoring System**
4. **Way Forward**
5. **Summary**
6. **Q & A**

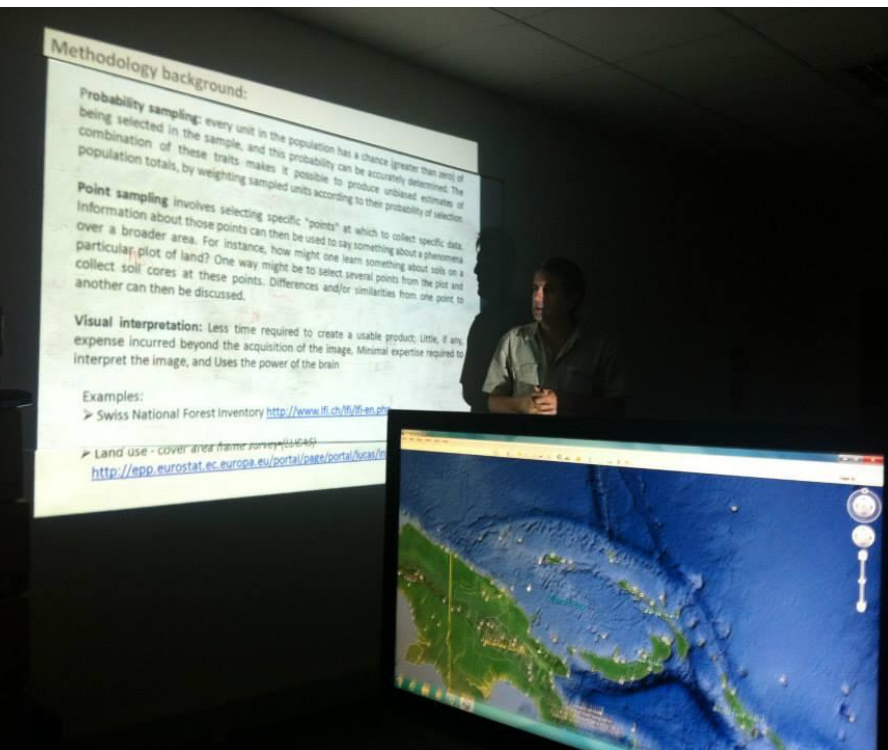




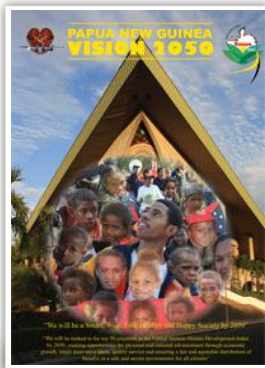
# Objectives

## Objectives

### 1. Sharing PNG's experiences working towards the National Monitoring System



**A PNG has translated its country's constitutional priorities and long-term development goals into tangible actions**



**Vision 2050, Pillar 5: Environmental Sustainability and Climate Change**



**Development Strategic Plan, 2010-2050**



**Medium Term Development Plan, 2011-2015**



**CCDS & IAP**

**PNG's climate compatible development strategy (CCDS) has identified the country's mitigation and adaptation priorities, which have been translated into tangible actions in the Interim Action Plan (IAP)**



**OCCD Corporate Plan, 2011-2013**

**OCCD: Implementation Plan**

**NEC Decision, 54/2010**



**Annual Workplan, 2013**

**B**

# The Climate-Compatible Development Strategy (CCDS) and Interim Action Plan (IAP) address climate change in a comprehensive way ...



**REDD+**



**LCG & Mitigation**



**Adaptation**



**MRV**



**National consultation**

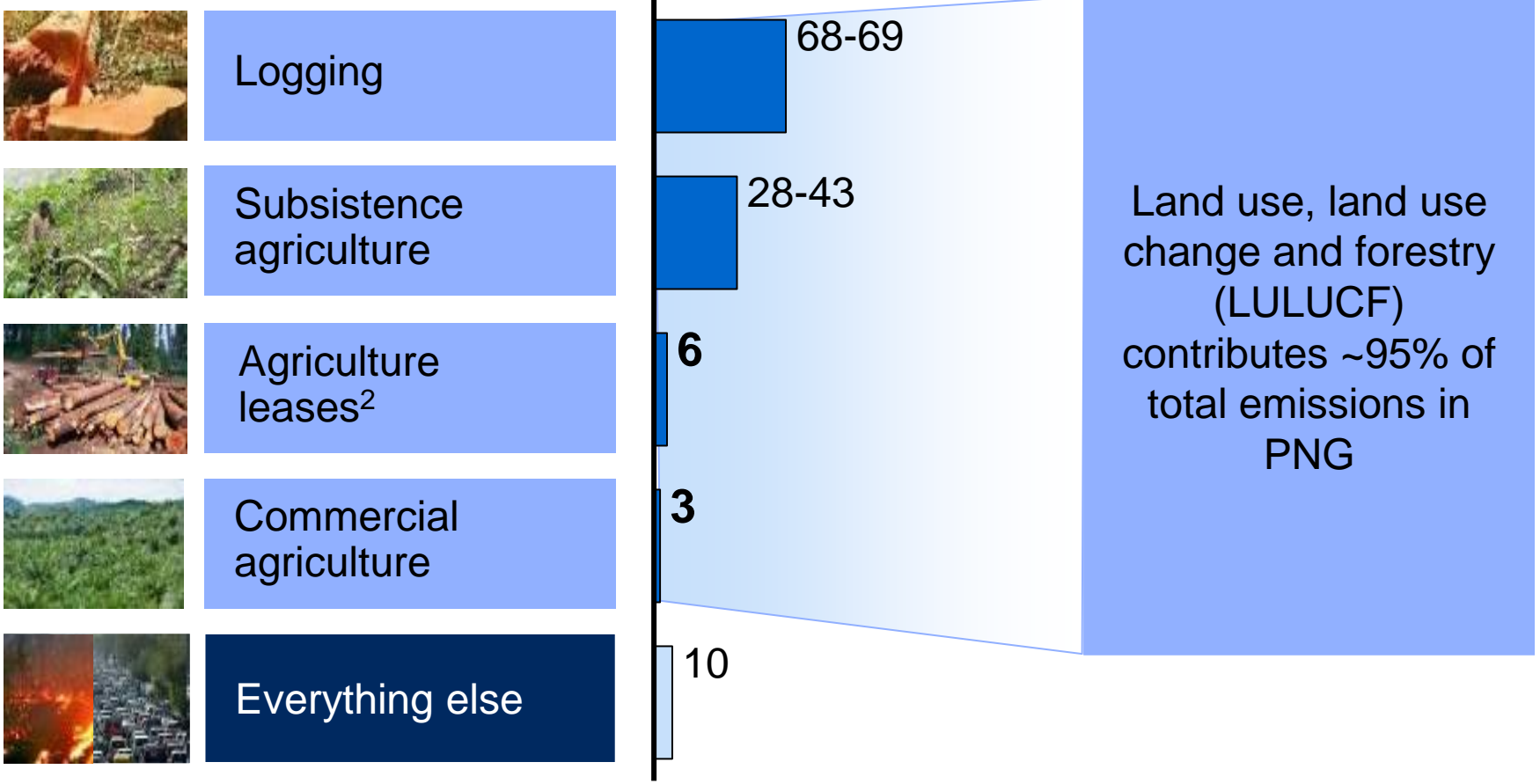


**Institution**

# C Forestry and agriculture is the biggest driver of emissions in PNG

## Driver of emissions

## 2010 emissions<sup>1</sup> Mt CO<sub>2</sub>e



<sup>1</sup> Estimate of 2010 extrapolated from 2008/09 data

<sup>2</sup> Exact emission for 2010 still to be verified





**UN-REDD National  
Programme**

# Objectives of PNG's UN-REDD National Programme



- Support the Government of PNG to **progress its activities towards REDD-plus readiness**
- **Complement existing efforts to establish a REDD-plus framework** in PNG, including efforts from GoPNG, civil society, the private sector and development partners
- Focus on the **refinement and implementation of a full MRV roadmap** for PNG that supports PNG's overall REDD framework and readiness efforts



## PNG's UN-REDD NPD has been in development since 2009

### PNG's UN-REDD NPD formulation and validation process

2009



- Joint Programme proposal formulation begins
- Presented to Policy Board

2010



- GoPNG opts to review Proposal (National Programme Document) to align funding request with country needs
- Agreement to focus NPD on developing an MRV system for PNG
- NPD submitted to Policy Board

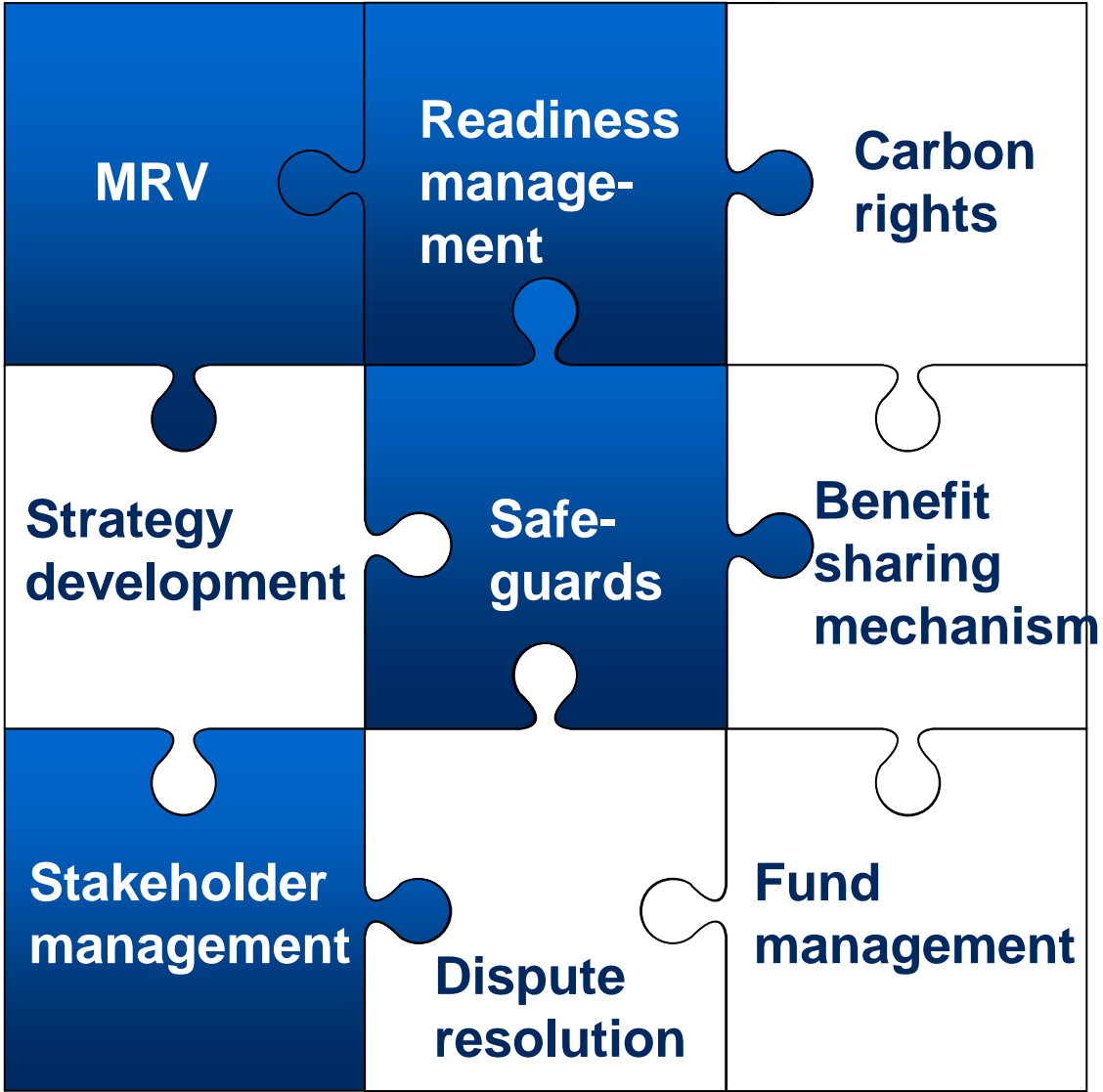
2011













- NPD conditionally approved by Policy Board
- OCCD revises Proposal and launches 1-month review period
- Validation workshop in Feb 2011 finalises NPD with stakeholder inputs incorporated
- **Policy Board approves PNG's UN-REDD NPD on 28 Apr 2011**

# The UN-REDD National Programme is just one contribution to PNG's readiness efforts

 UN-REDD



# PNG's UN-REDD NP is expected to deliver on five outcomes

Outcome	Lead UN Agency	Potential Implementing Partners
 <p><b>1. Readiness Management Arrangements in Place</b></p>		<ul style="list-style-type: none"> <li>▪ DNPM</li> <li>▪ OCCD</li> </ul>
 <p><b>2. National MRV System Developed</b></p>		<ul style="list-style-type: none"> <li>▪ DEC</li> <li>▪ UPNG</li> <li>▪ PNGFA</li> <li>▪ DAL</li> <li>▪ OCCD</li> <li>▪ DLPP</li> <li>▪ UNITECH</li> </ul>
 <p><b>3. Historical Drivers of Deforestation Assessed</b></p>		<ul style="list-style-type: none"> <li>▪ PNGFA</li> <li>▪ UPNG</li> <li>▪ DAL</li> <li>▪ OCCD</li> </ul>
 <p><b>4. Monitoring of Abatement Concepts Supported</b></p>		<ul style="list-style-type: none"> <li>▪ PNGFA</li> <li>▪ OCCD</li> </ul>
 <p><b>5. Framework for Stakeholder Engagement Processes in place</b></p>		<ul style="list-style-type: none"> <li>▪ OCCD</li> </ul>



# Each outcome fits into a part of PNG's climate change priorities

## Priorities for 2011

## Relevant UN-REDD NP Outcome



**REDD+**

- **REDD+ pilots** for key abatement levers
- REDD+ readiness, e.g., **benefit sharing approach**



**1. Readiness Management Arrangements in Place**



**Low-carbon growth**

- **Rural electrification**, e.g., new micro hydro plants
- **Energy efficiency** measures
- **Renewable Energy**, e.g., geothermal



**3. Historical Drivers of Deforestation Assessed**



**Adaptation**

- **Mangrove planting**
- **Coastal Early Warning System**
- **Food security and agricultural yield changes**



**4. Monitoring of Abatement Concepts Supported**



**MRV & Cons.**

- **MRV System**
- **Consultation, education, awareness**
- **Second National Communication**



**2. National MRV System Developed**

**Others**

- A number of priorities, e.g.,
- Securing **interim funding** of USD 50 million
  - Draft **Climate Change Act**

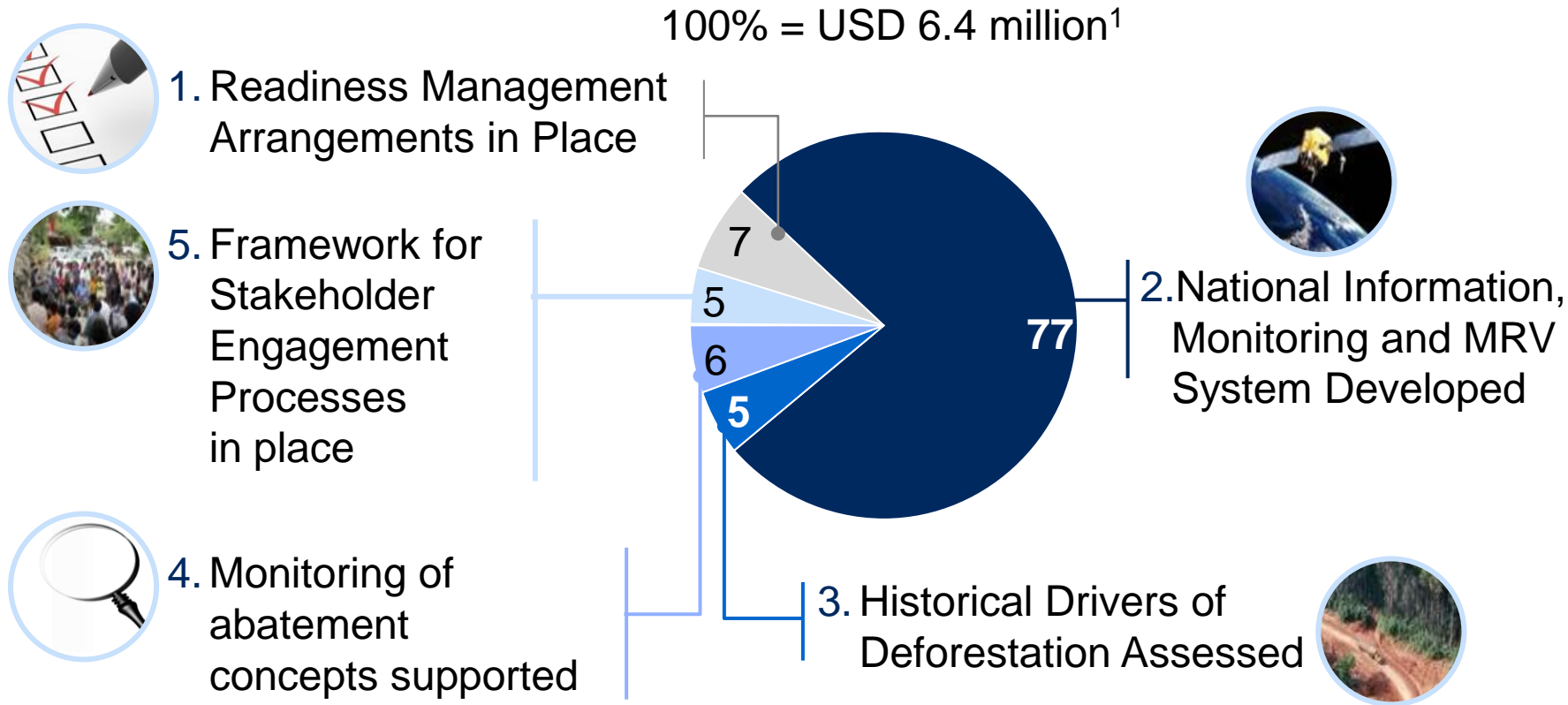


**5. Framework for Stakeholder Engagement Processes in place**

# The National Programme allocates funding to 5 outcomes

USD Millions

## Total Agency contribution by outcome



<sup>1</sup> Includes 7% Agency indirect support costs





# National Monitoring System



# Towards REDD+: the Papua New Guinea efforts in building its National Forest Monitoring System



# HIGHLIGHTS:



• PNG is realizing its “National Forest Monitoring System” as a system that will address all the information, monitoring and MRV needs under the Convention;



• The National Forest Monitoring System will be developed with a multiple purposes approach, e.g. forests, land use, land tenure, food security, biodiversity and rural livelihoods;



• The National Forest Monitoring System is a long-term effort that will be developed with a clear and strong institutional base;



• The design and implementation of the National Forest Monitoring System is including a full and effective participation and capacity development of all relevant institutions and stakeholders;



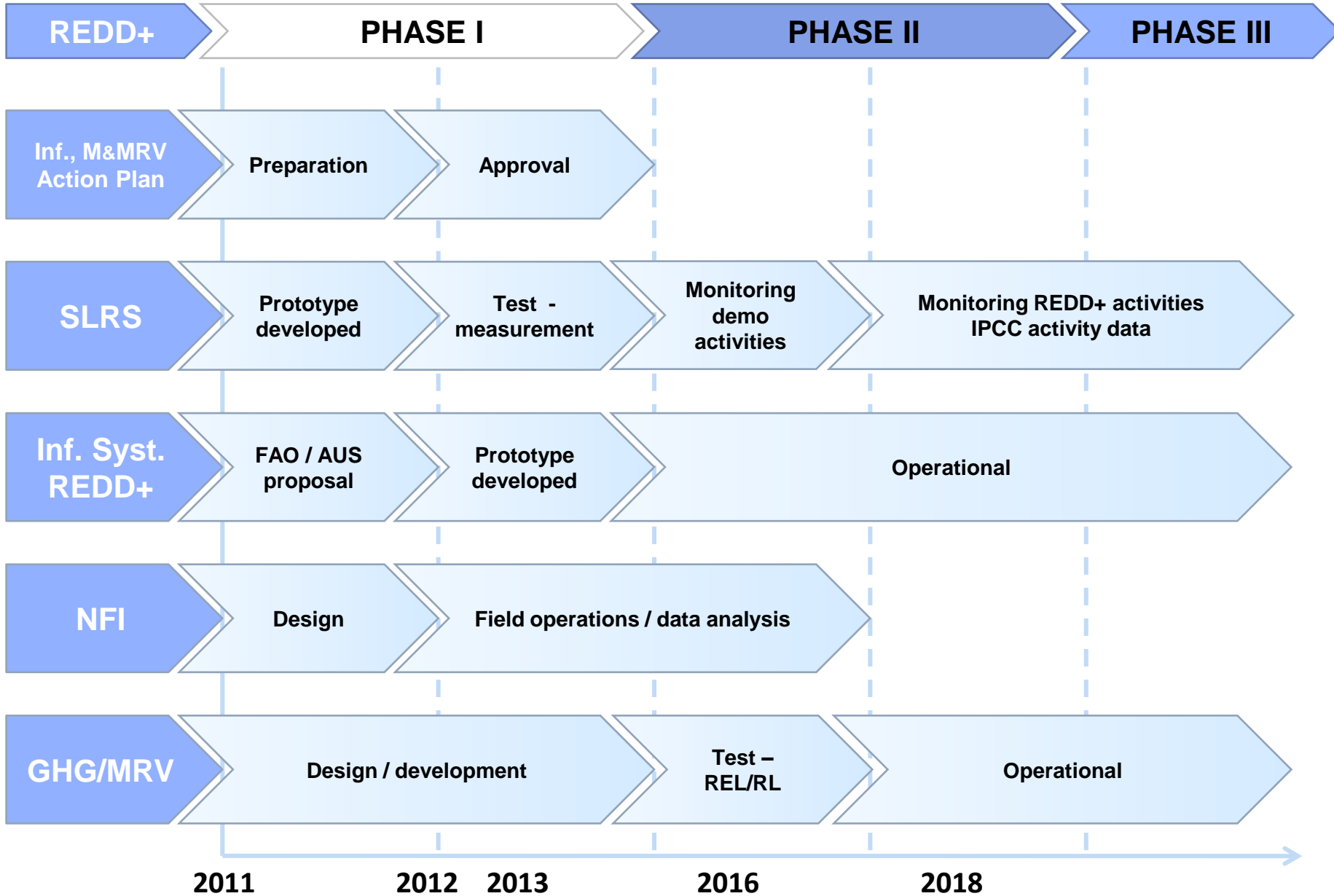
• The National Forest Monitoring System will provide free access, transparency and timely delivery of all relevant data and information to all relevant stakeholders;



• The National Forest Monitoring System is currently under development with contributions and supports from UN-REDD Programme, AusAID (Australia), and JICA (Japan).

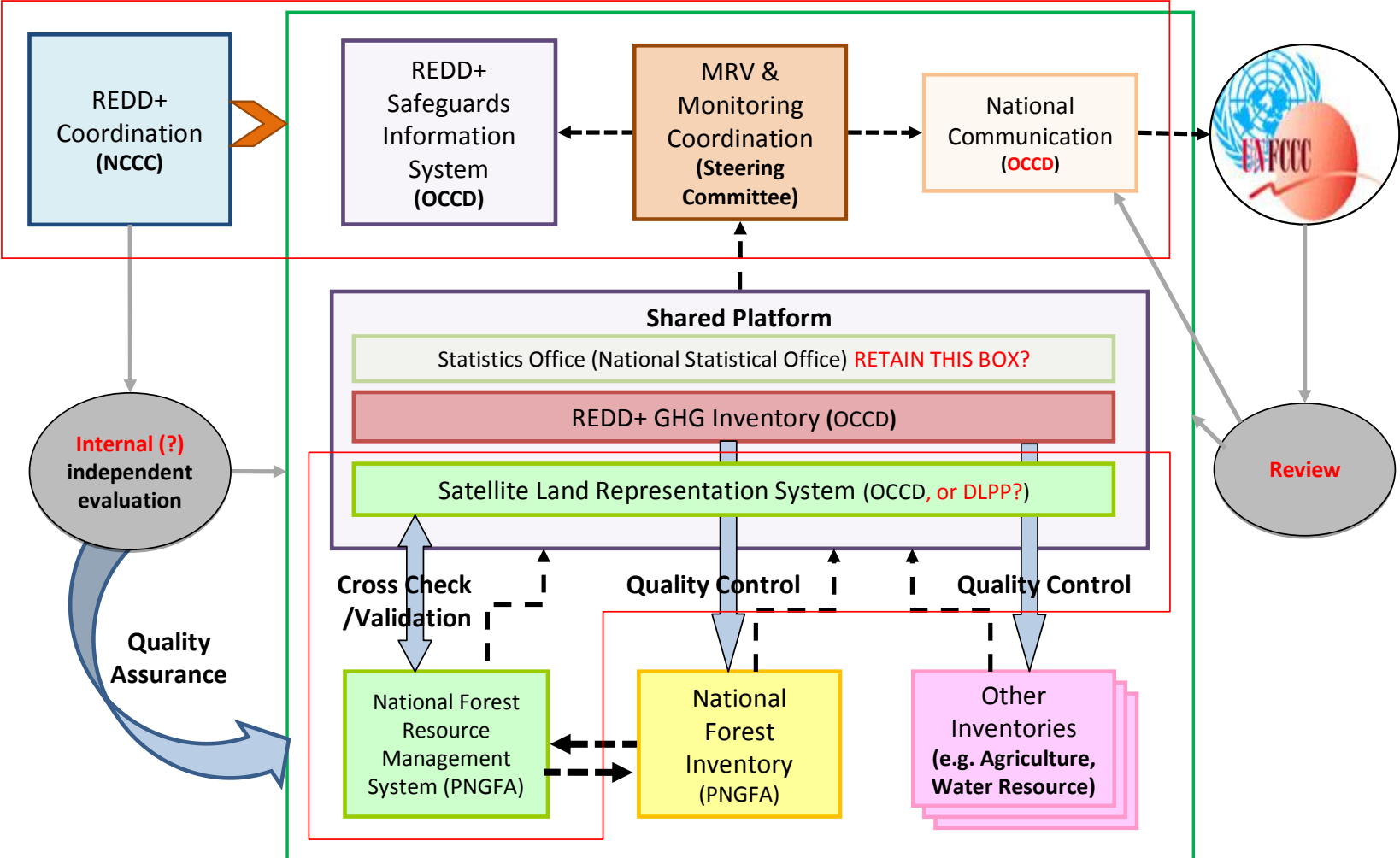


# PNG INFORMATION, MONITORING & MRV ROAD MAP





# INSTITUTIONAL ARRANGEMENT:



REDD+ Phase 2      - - - - -> Information flow  
 REDD+ Phase 3      - - - - -> External coordination      > Overall coordination



# ONGOING ACTIVITIES:



• **MRV Technical Working Group:** coordinated by OCCD with the participation of all the country relevant stakeholders;



• **NEW 2011 Forest Map:** coordinated by PNG Forest Authority with technical support from JICA. This map will be use as baseline to assess past and future forest changes;



• **1<sup>st</sup> National Forest Inventory:** coordinated by PNG Forest Authority with technical support from UN-REDD. The NFI it will be the key element to assess forest related emission/removal factors



• **1<sup>st</sup> Information, Monitoring & MRV Action Plan:** coordinated by OCCD participation of all relevant country institutions and relevant stakeholders;



• **Prototype for a Satellite Land Monitoring System:** coordinated by OCCD with technical support from UN-REDD and INPE. A team of PNG experts has attended a course in Brazil, the beta version of the prototype with its web-portal have been presented in Durban in COP17



# START-UP PHASE:

## development of a prototype for the National Forest Monitoring System

- **Build on existing national forest monitoring experiences**
- **FAO (UN-REDD) / INPE collaboration**
- **Two components: TerraPapua platform**  
**National forest monitoring WEB-Portal**
- **Combination of open-source database, user interface, tools and algorithms adapted according to country needs**
- **Free-of-charge and supported by analysis and programming teams in Brazil (INPE) and FAO**
- **linkage of information from other technical partners and contributors for analysis and verification.**







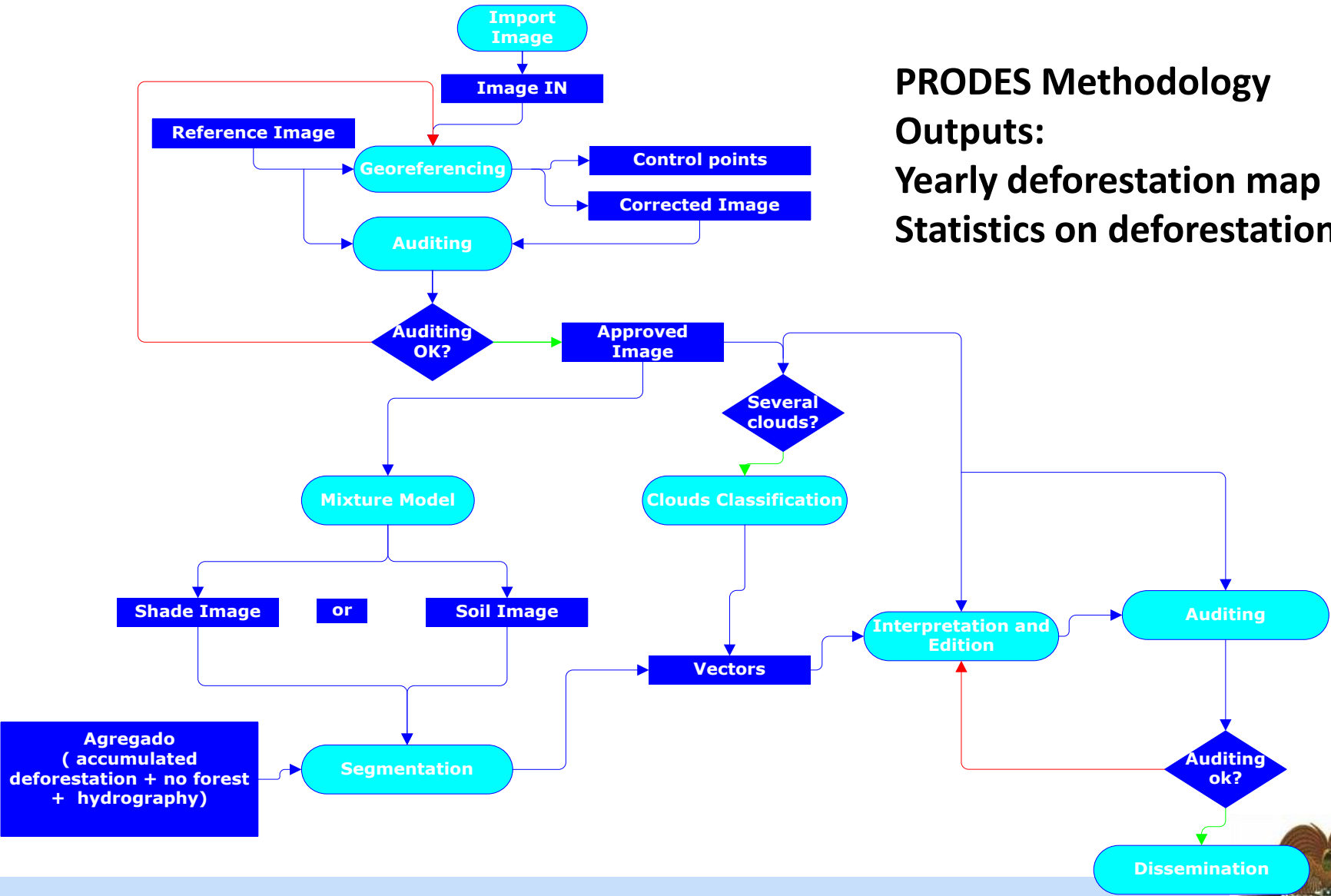
# BUILD ON TERRAAMAZON PLATFORM:



- **RS/GIS software platform designed to be a multi-user editor of geographic vectorial data stored in a unified database**
- **Free of charge (open-source)**
- **Self sustaining system (open to improvements)**
- **Up to 20 concurrent users during the interpretation phase**

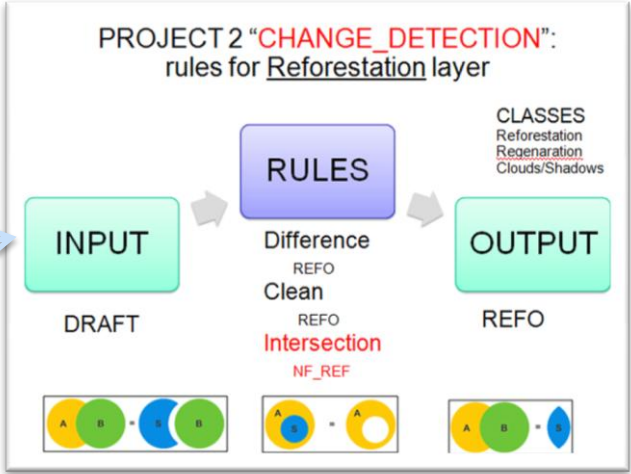
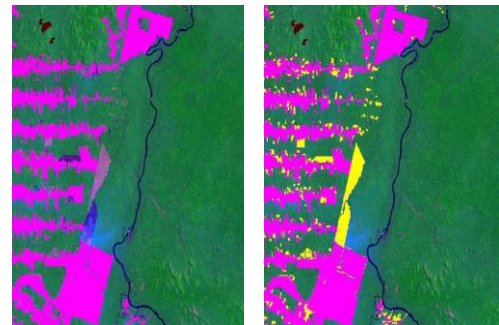
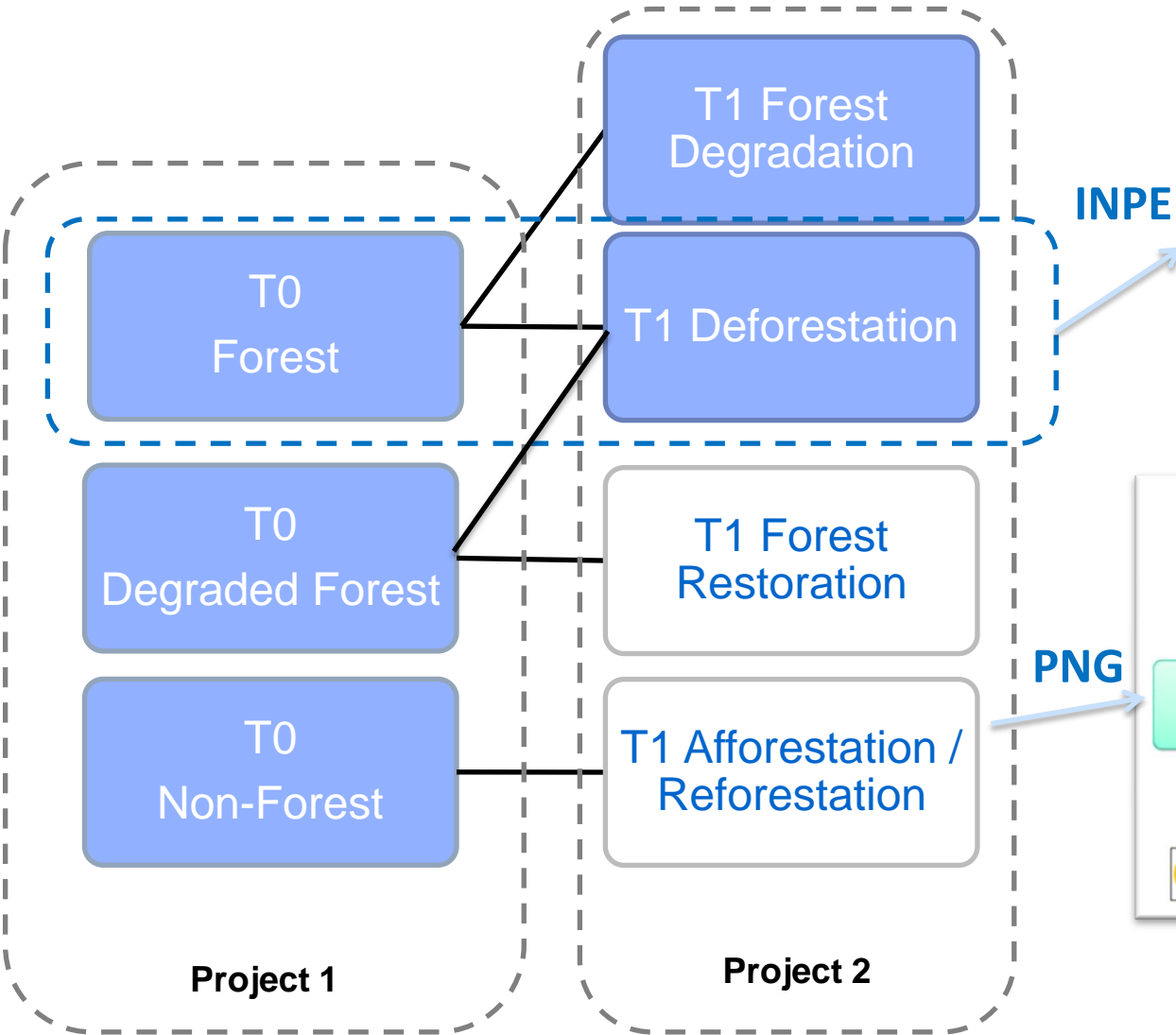
# TERRAAMAZON IN BRAZIL:

**PRODES Methodology**  
**Outputs:**  
Yearly deforestation map  
Statistics on deforestation area

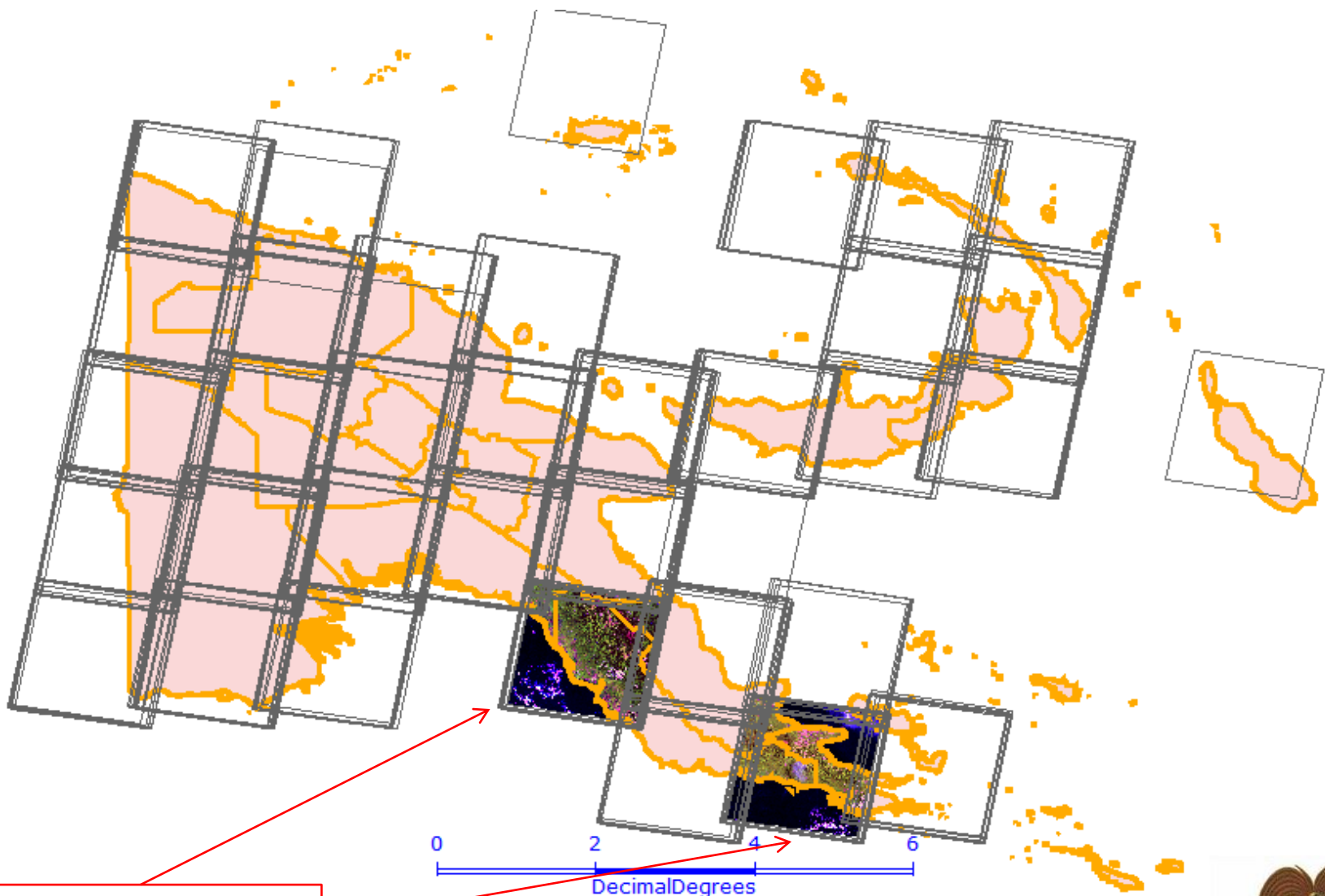




# PNG CONCEPTUAL MODEL:



# TERRA-PAPUA WORKSHOP FAO HQ, 21Nov.–2Dec2011:

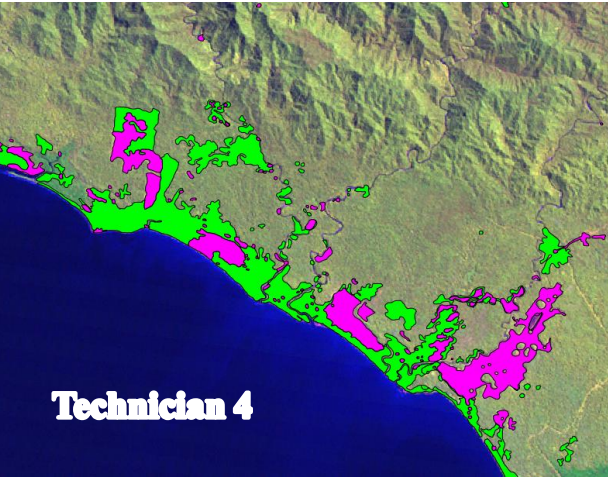
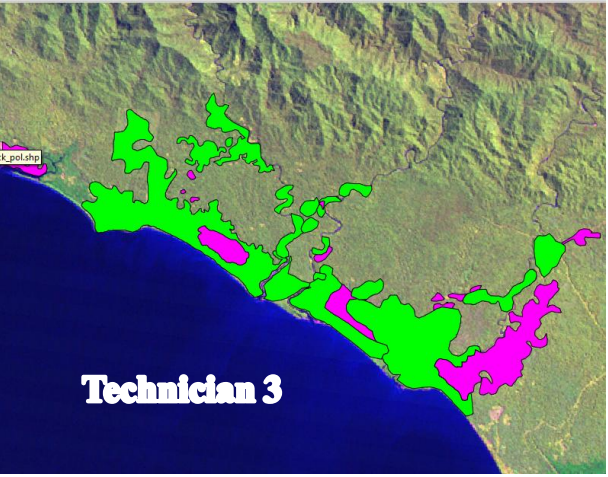
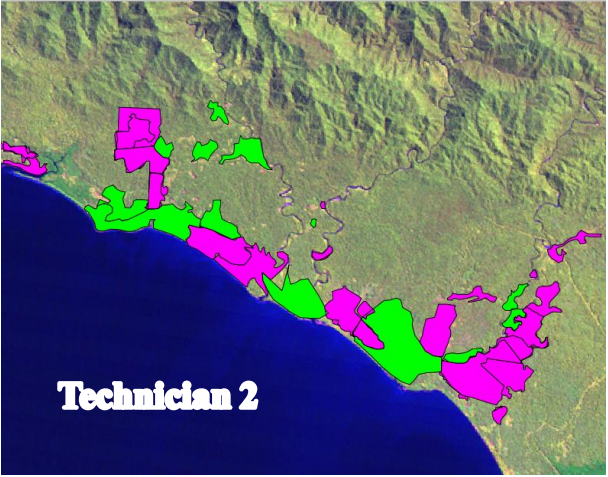
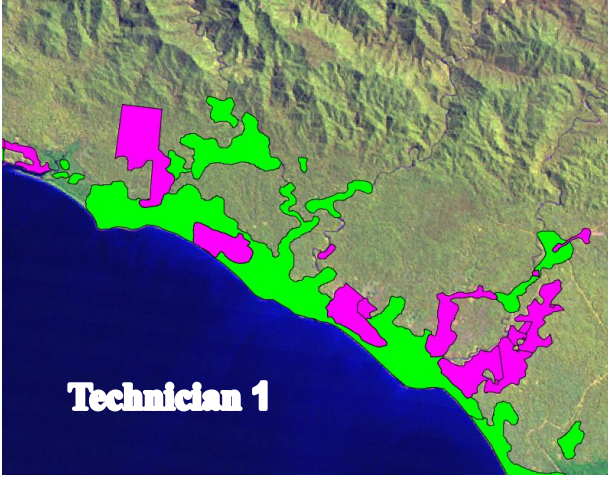
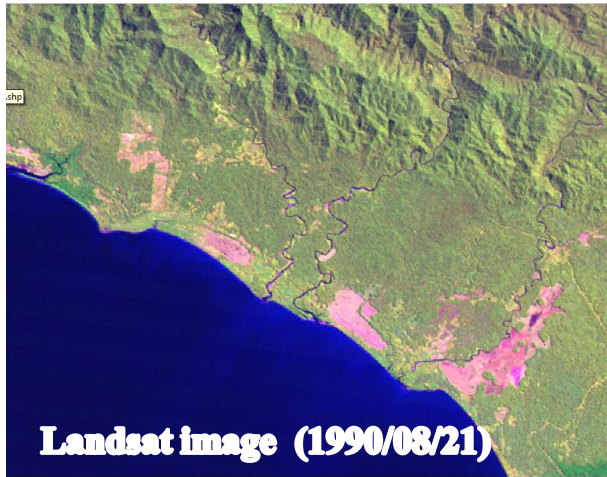


**TEST AREAS**



# TERRA-PAPUA WORKSHOP CALIBRATION OF IMAGE INTERPRETATION:

FAO HQ, 21Nov.–2Dec2011



- CLOUDS/SHADOWS
- DEGRADED FOREST
- NON FOREST





# TERRA-PAPUA WORKSHOP

## MULTI-USER EDITION:

FAO HQ, 21Nov.–2Dec2011

TerraAmazon - [Display - general]

File Show View Theme Process Attribute Administration Help

0.01 AFFOREST

Layers

- PNG\_change
  - AFFORESTATION
  - CELL
  - Cen\_veg
  - CLOUDS\_SHADOW
  - DEFORESTATION
  - DEGRADATION
  - DEGRADED FOREST

Themes

- general
  - CELL
  - LandsatIndexDEG10
  - PNG\_box
  - PNG\_adm1
  - DRAFT
  - DEGRADATION
  - FOREST\_RESTITUTION
  - REFORESTATION
  - AFFORESTATION
  - DEFORESTATION
  - NON\_FOREST
  - DEGRADED\_FOREST
  - Draft\_1\_pol
  - Lan\_MB\_p095r66\_19890708
  - Lan\_MB\_p094r67\_19900821
  - Cen\_veg
  - Mil\_veg
  - CLOUDS\_SHADOW
  - Lan\_MB\_p096r66\_19900328

Images

Cells Manager


List of locked cells...

	User Name	Cell Oid	Date	Hour
1	Frederick	042038	30/11/2011	16:46:18
2	Frederick	042039	30/11/2011	16:46:18
3	Gewa	042040	30/11/2011	11:35:12
4	Gewa	042041	30/11/2011	11:35:12
5	Mericha	036028	30/11/2011	12:13:12
6	Mericha	037028	30/11/2011	12:13:12
7	Popei	037029	30/11/2011	16:4:8
8	Popei	037030	30/11/2011	16:4:8

Help    Unlock Cell    Close

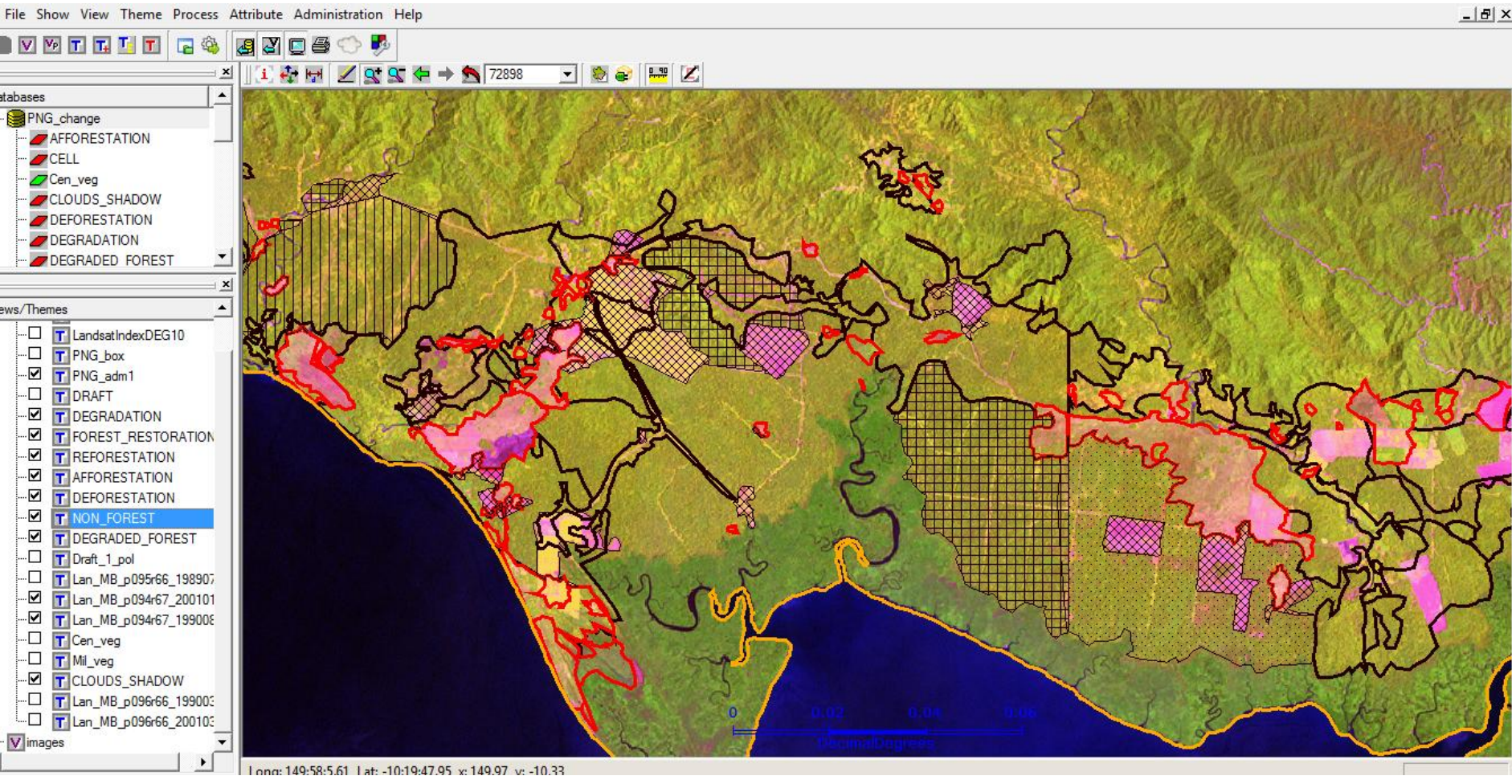
Decimal Degrees

Google Earth    TerraAmazon - [Dis...    Microsoft PowerPoi...



# TERRA-PAPUA WORKSHOP RESULTS:

FAO HQ, 21Nov.–2Dec2011





An aerial photograph of a dense forest. The foreground and middle ground are dominated by large, fan-shaped tree ferns with vibrant green and some brownish fronds. Interspersed among the ferns are tall, slender trees with thin trunks. The background shows a thick canopy of various green trees, creating a rich, layered texture. The overall scene is a lush, natural landscape.

# National Monitoring System Web-Portal

# PAPUA NEW GUINEA NATIONAL FOREST MONITORING WEB-PORTAL:

- **Web portal under development through the support of FAO, UN-REDD Programme , expected to be on-line June 2014**
- **Enable the country to follow all the actions related to the implementation of its national REDD+ policies and measures and to communicate its results to the international community (transparent and open data access)**

## **In practice...**

- **Allow any user to interact with the system through a web-interface;**
- **Visualise data; download statistics; visualise information on logging concessions, protected areas, REDD+ activities,....**
- **Allow users to provide feedback on areas of deforestation, etc.**





# PAPUA NEW GUINEA NATIONAL FOREST MONITORING WEB-PORTAL:

PNG National Forest Monitoring Portal - Windows Internet Explorer

Secure Search McAfee

PNG National Forest Monitoring Portal

PNG National Forest Monitoring Portal

2010

Francais English

- REDD+ Activity
  - Deforestation
  - Degradation
  - Conservation
  - Sustainable forest management
  - Enhancement
- Forestry information
  - REDD+ Safeguards
  - Forest Management Data
- Land use/Land use changes
  - Land use map
  - Forest land -> Other land use
  - Other land use -> Forest land
    - Reforestation
    - Afforestation
  - Forest land -> Forest land
    - Selective Logging
    - Fire

Port Moresby

Scale = 1 : 7M

Yahoo! 2011 Yahoo! Inc.





# PAPUA NEW GUINEA NATIONAL FOREST MONITORING WEB-PORTAL:

The screenshot displays the PNG National Forest Monitoring Portal. At the top left is the PNG coat of arms logo. The main title "PNG National Forest Monitoring Portal" is centered at the top. Below the title is a navigation bar with icons for home, back, forward, search, and other functions, along with a year selector set to "2010". The main map area shows a satellite-style view of Papua New Guinea with overlaid forest monitoring data. A legend on the left side is open, showing "REDD+ Activity" with categories: Deforestation (red), Degradation (yellow), Conservation (green), Sustainable forest management (light green), and Enhancement (dark green). Below this are "Land use/Land use changes" and "Forestry information". A "Selected layers" window is also open, showing "Forest mask" with "Clouds/shadows" (grey), "Non-forest" (red), and "Disturbed forest" (yellow). The map shows a red dashed box highlighting a specific area in the central part of the country.

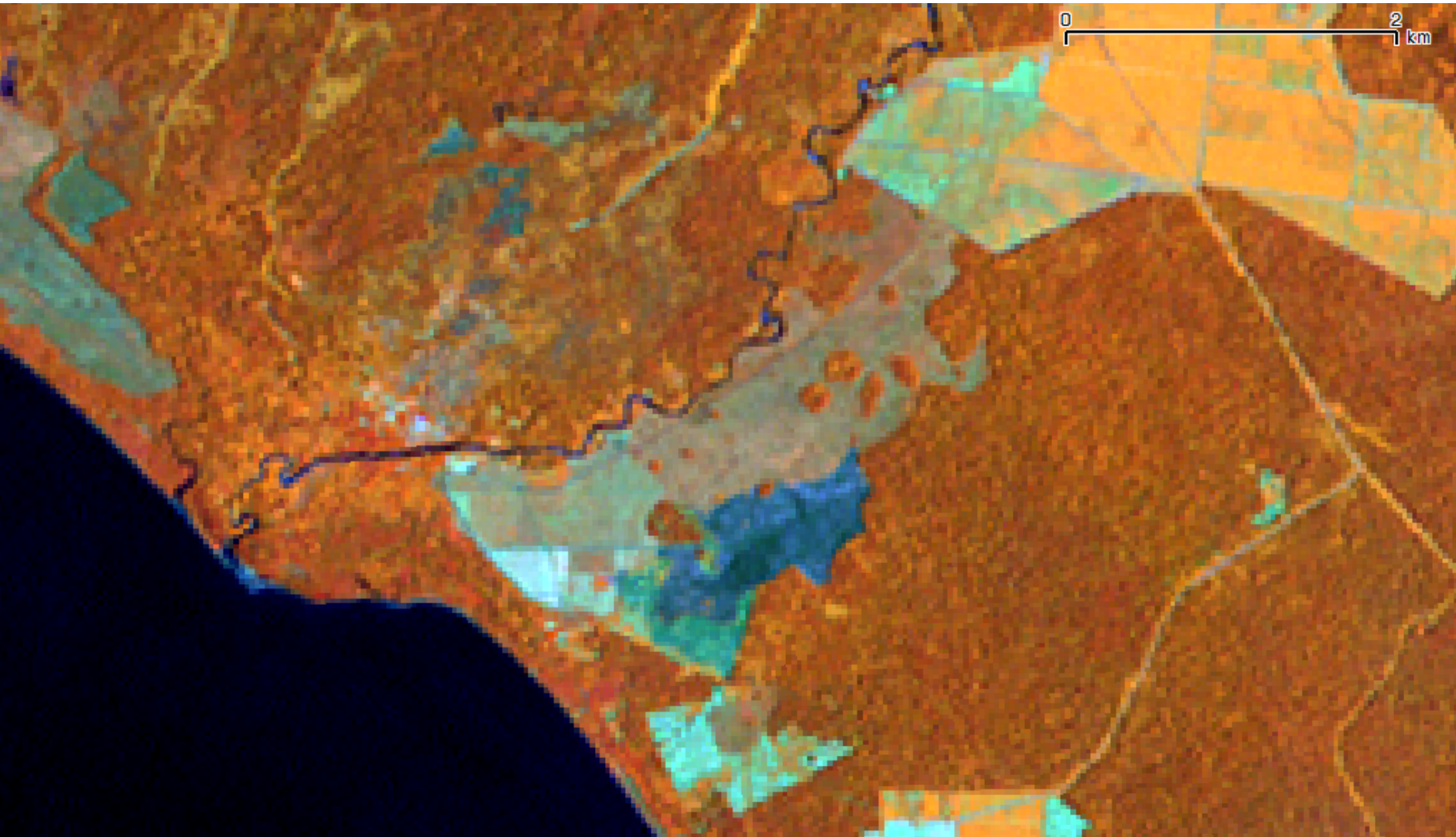


# LANDSAT 1990



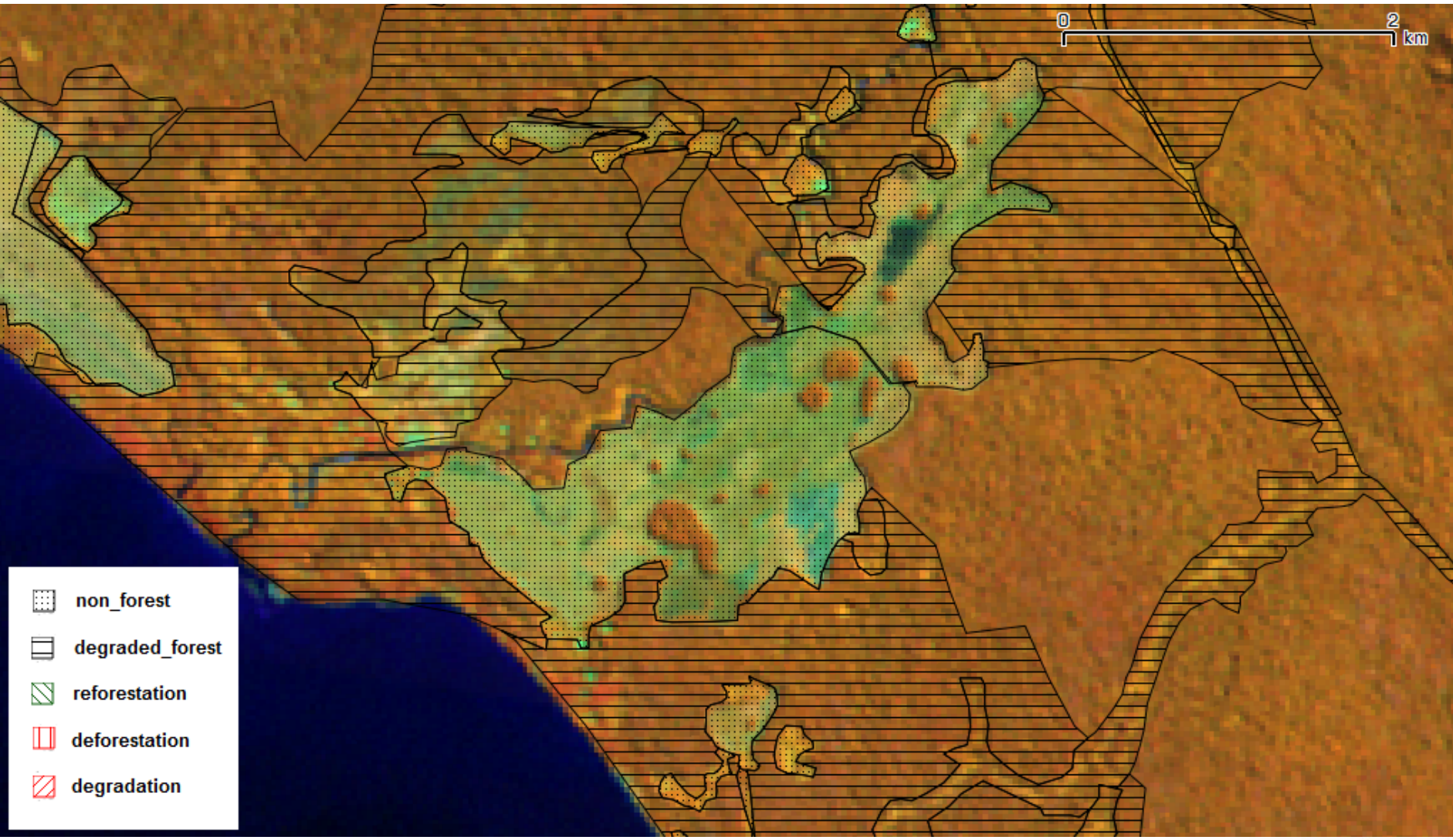


# LANDSAT 2000

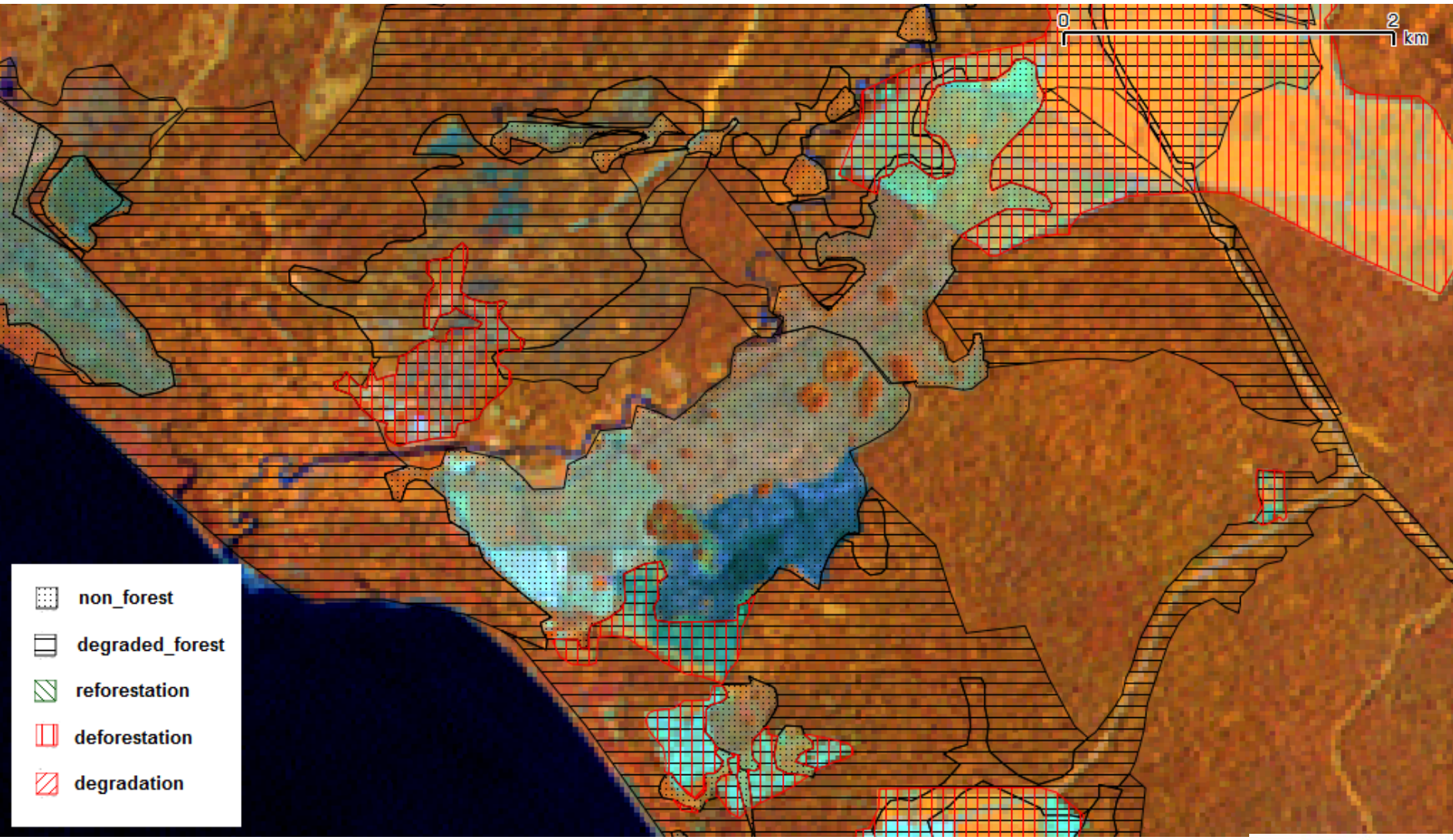




# LAND USE ASSESSMENT 1990

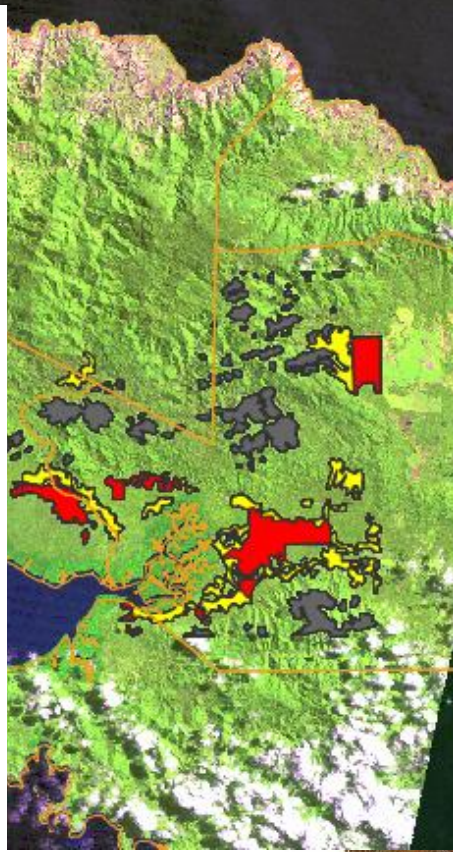
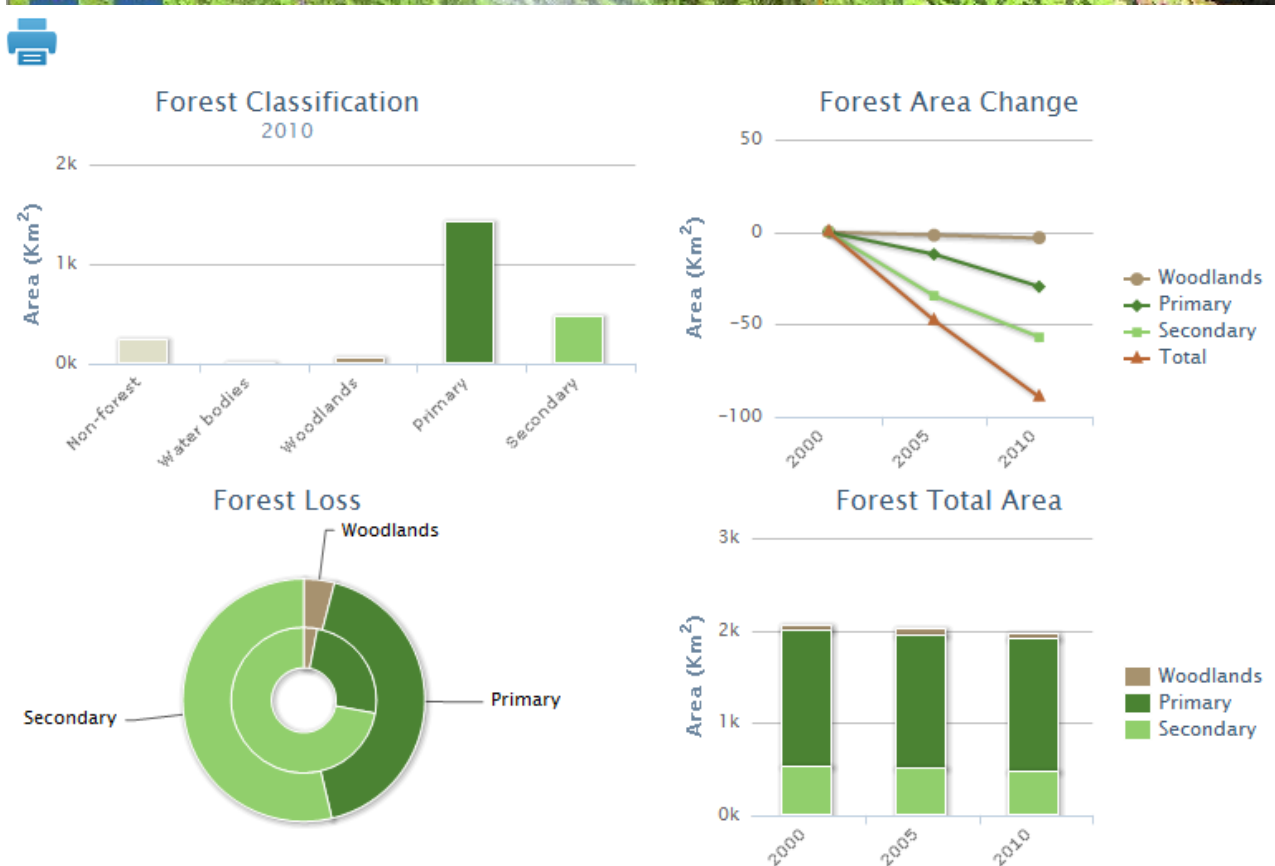


# LAND USE ASSESSMENT 2000





# PAPUA NEW GUINEA NATIONAL FOREST MONITORING PORTAL:



Please place the mouse pointer over the charts to see values



## Source of Data

1

**PNG UN-REDD Programme is providing capacity building and will support hardware and software**

2

**Much of the historical data have and will be provided through the key stakeholders**

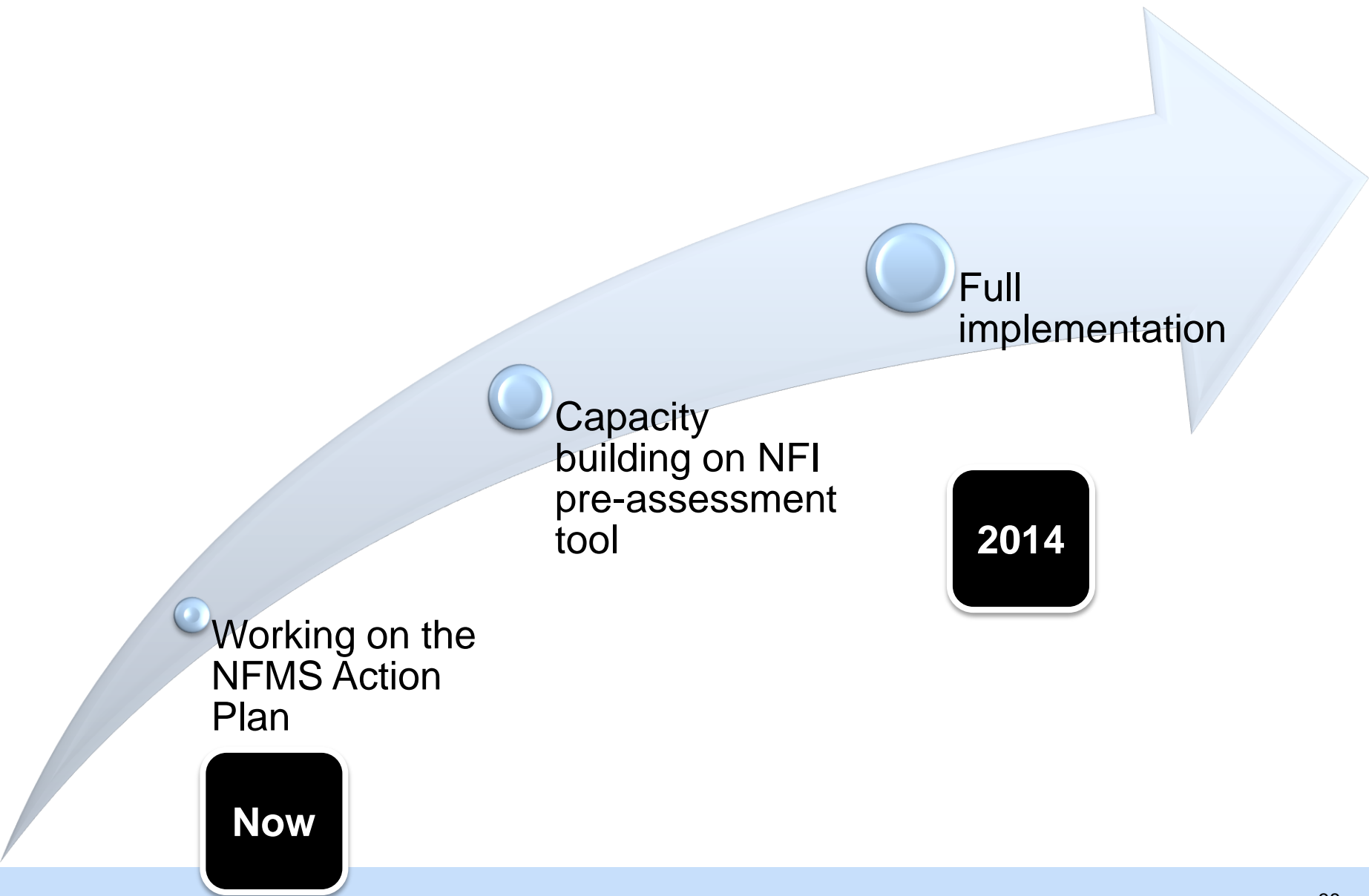
- i. UPNG – Capacity building**
- ii. PNGFA- Forest basemap, NFI**
- iii. DAL – Soil and landuse**
- iv. DEC – Conservation and biodiversity**
- v. UNITECH – Capacity building**
- vi. MRA – Mining area**

3

**Will also be supported through the current projects like PNGFA/JICA project, EU/FAO/PNGFA, AusAid, etc**



# Way Forward



# Summary

1

Forest monitoring is required to assess the outcomes of REDD+ activities

- Are the activities working??

2

Forest monitoring can also provide useful information on the REDD+ safeguards

3

Online “web-GIS portals” can allow open access to forest monitoring (and therefore some safeguard) information

4

Forest monitoring is not a silver bullet!

- Useful for as part of the ***system to provide information*** on the safeguards
- Other information is needed!

**Thank you**



**Questions?**



## Contact

MRV and National Communication Division  
Office of Climate Change and Development  
P O Box 4017, Boroko 111, NCD. Papua New Guinea

Ph: +675 325 7528

Fax: +675 325 7620

Email: [info@occd.gov.pg](mailto:info@occd.gov.pg)/[joe.pokana@occd.gov.pg](mailto:joe.pokana@occd.gov.pg)

Website: [www.occd.gov.pg](http://www.occd.gov.pg)

