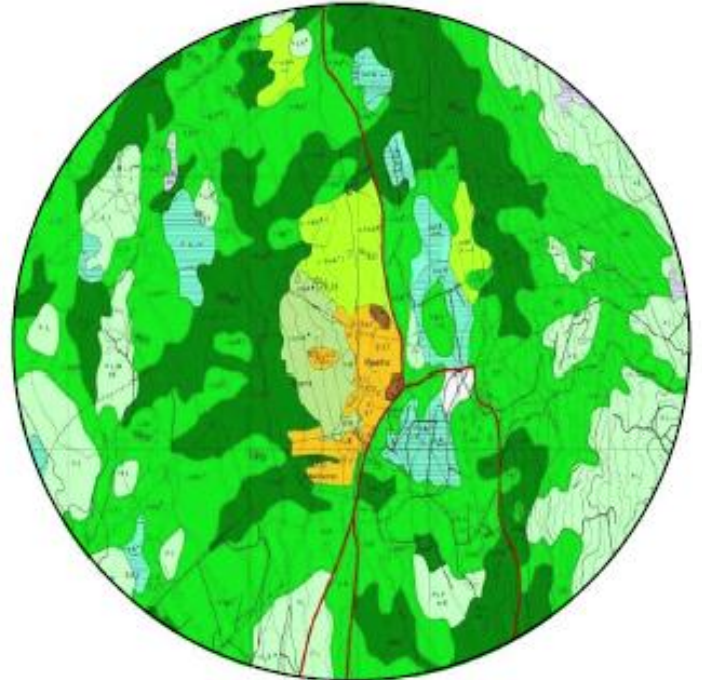




Organizing a national monitoring centre: From data to information

Land resources:

- Land cover, land use
- Forest
- Agriculture
- Soils
- Landscape
- Pasture
- Outfields



To supply decision makers
(public & private, national & international)
with information needed for decision making



information



decision



... systematically,

ландшафт

using standardized methods, procedures and routines:

A (geographical) information system

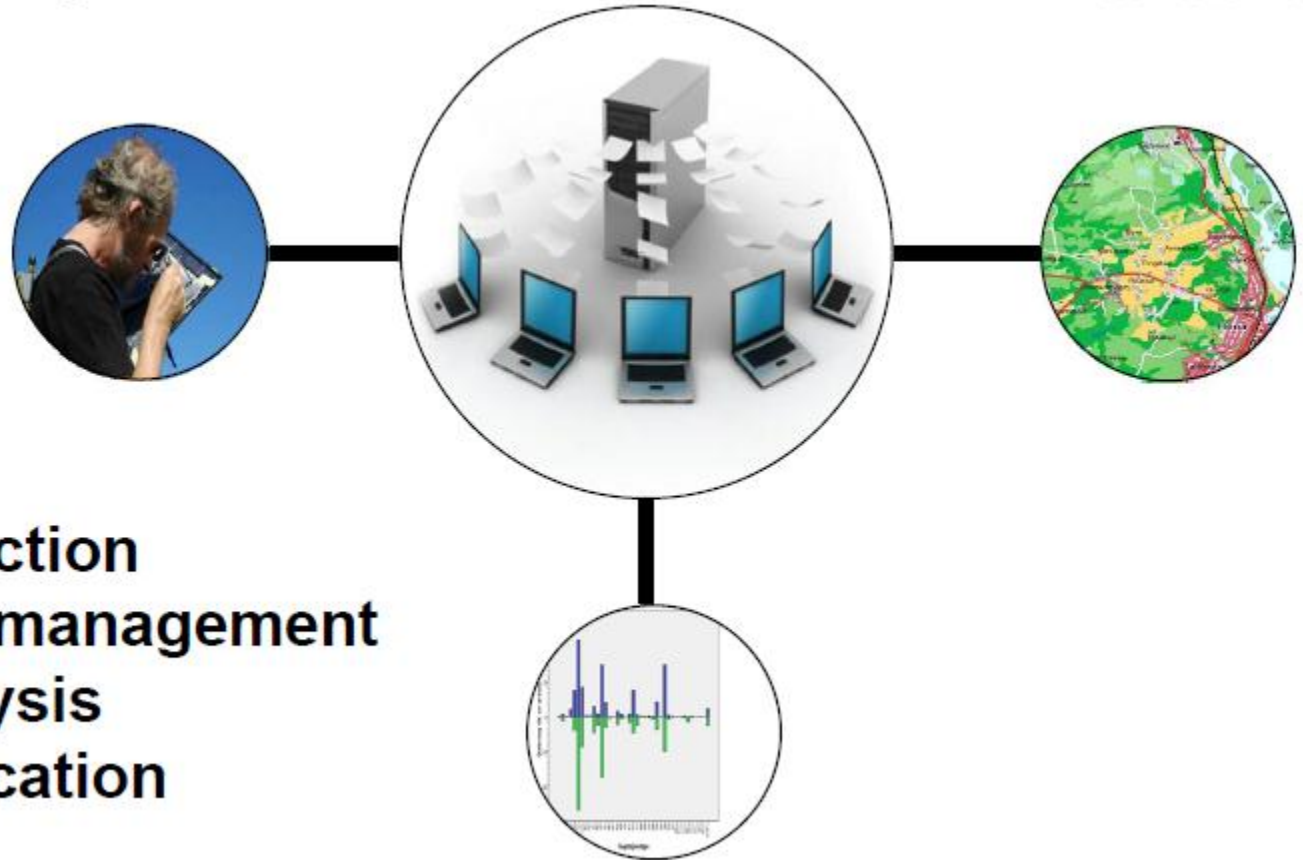


Systems have three properties:

- a) A system has a purpose
- b) A system operates routinely
- c) A system is a group of components



System components

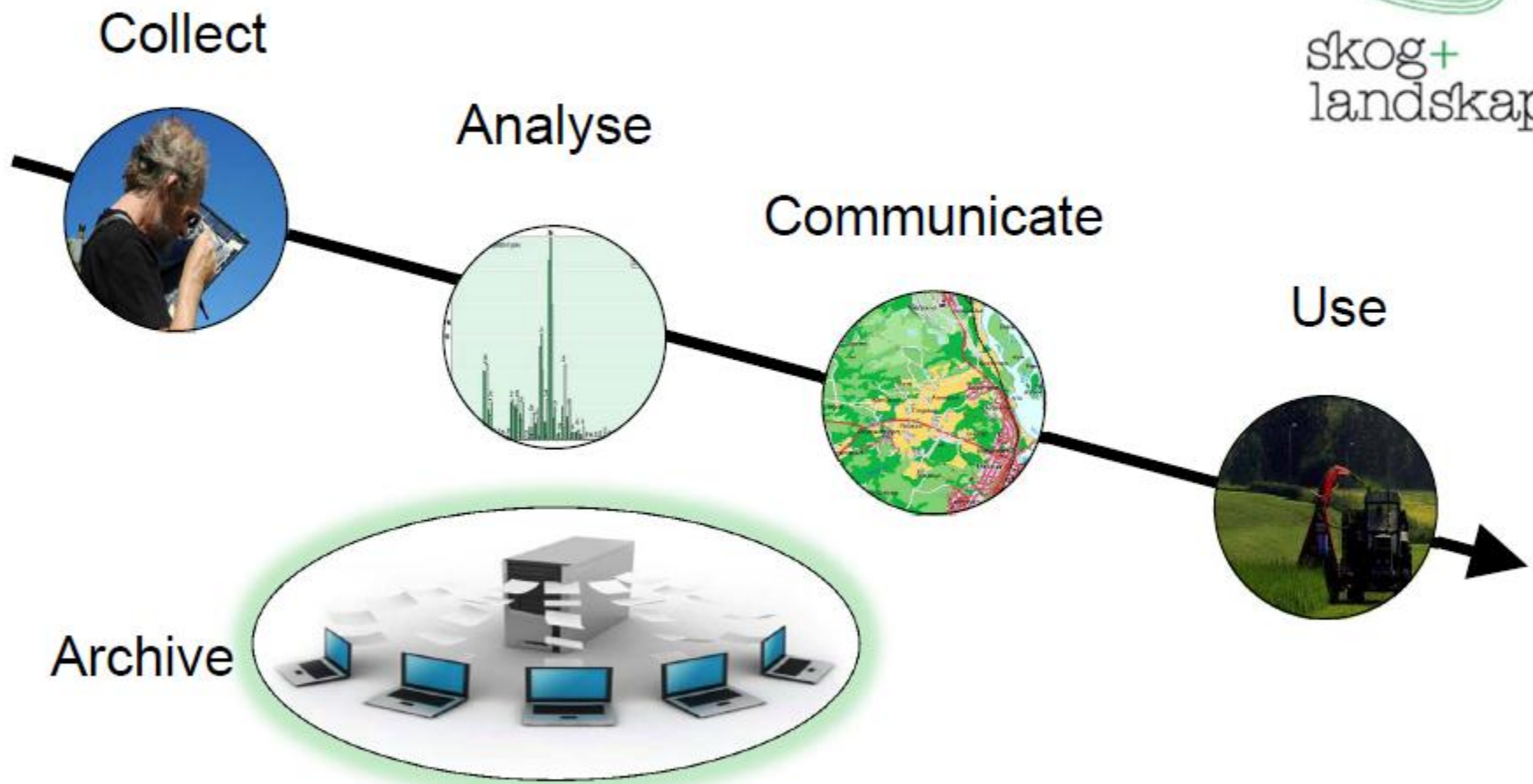


Data collection
Database management
Data Analysis
Communication

Norwegian Land Resource Survey



skog+
landskap

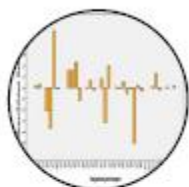


**A chain of data production and dissemination
Database management is a core component**

Norwegian Land Resource Survey



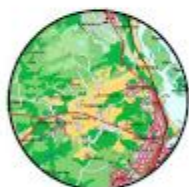
skog+
landskap



Clear and national role



Well-defined goals



Commitment (by authorities)



(Long term) continuity



Cooperation

Important features for any NFI

- Continuity
 - Short term projects will give some but
 - For long term "Monitoring" continuity is crucial!
- Stakeholder participation
 - Who are the users of data? Only FAO and government???
 - Acceptance important and therefore other stakeholders
- Financial committment and secuity

What kind of organizations do we need to fulfill this information system??

