

Joint NRCE - FOIP activity

WISDOM global

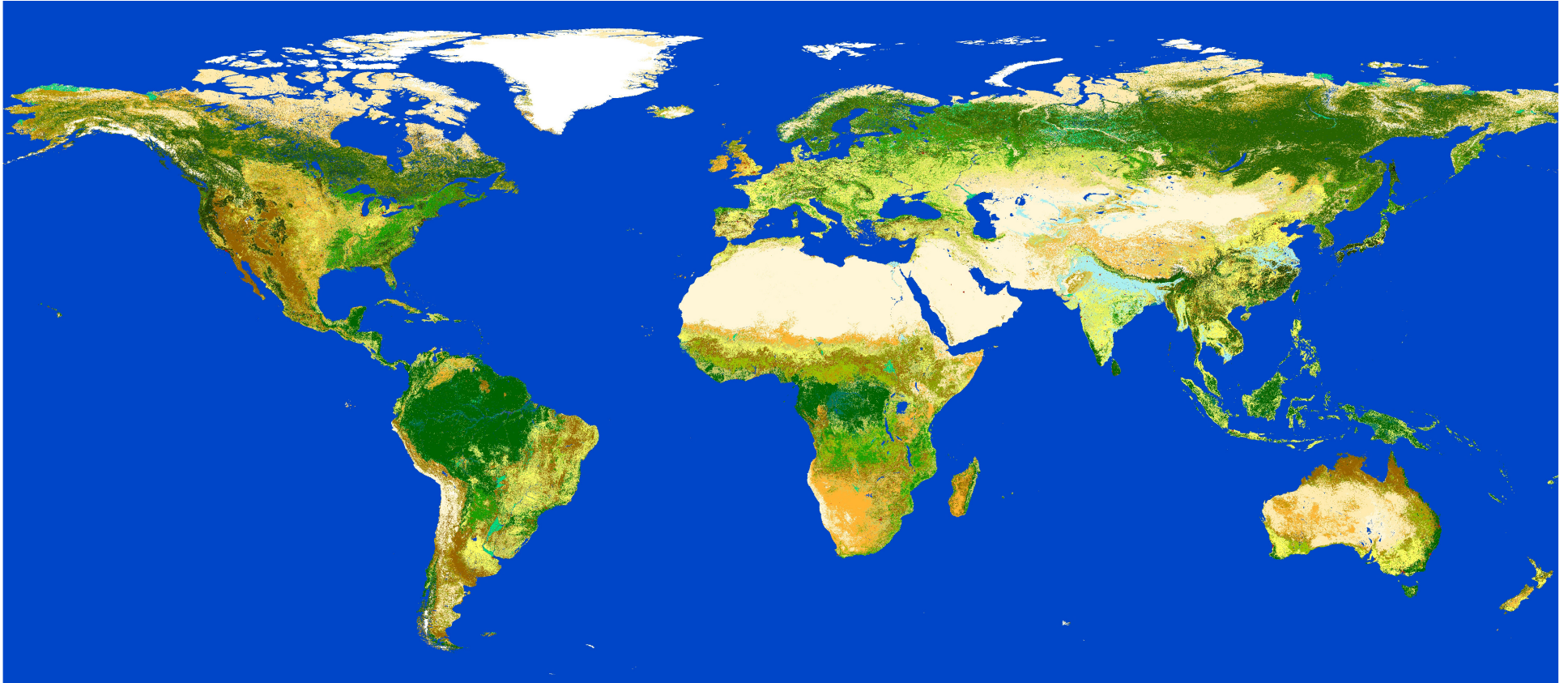
**Global cartographic overview of current consumption of woody biomass
for energy and its potentialities**

Phase I : Supply Module

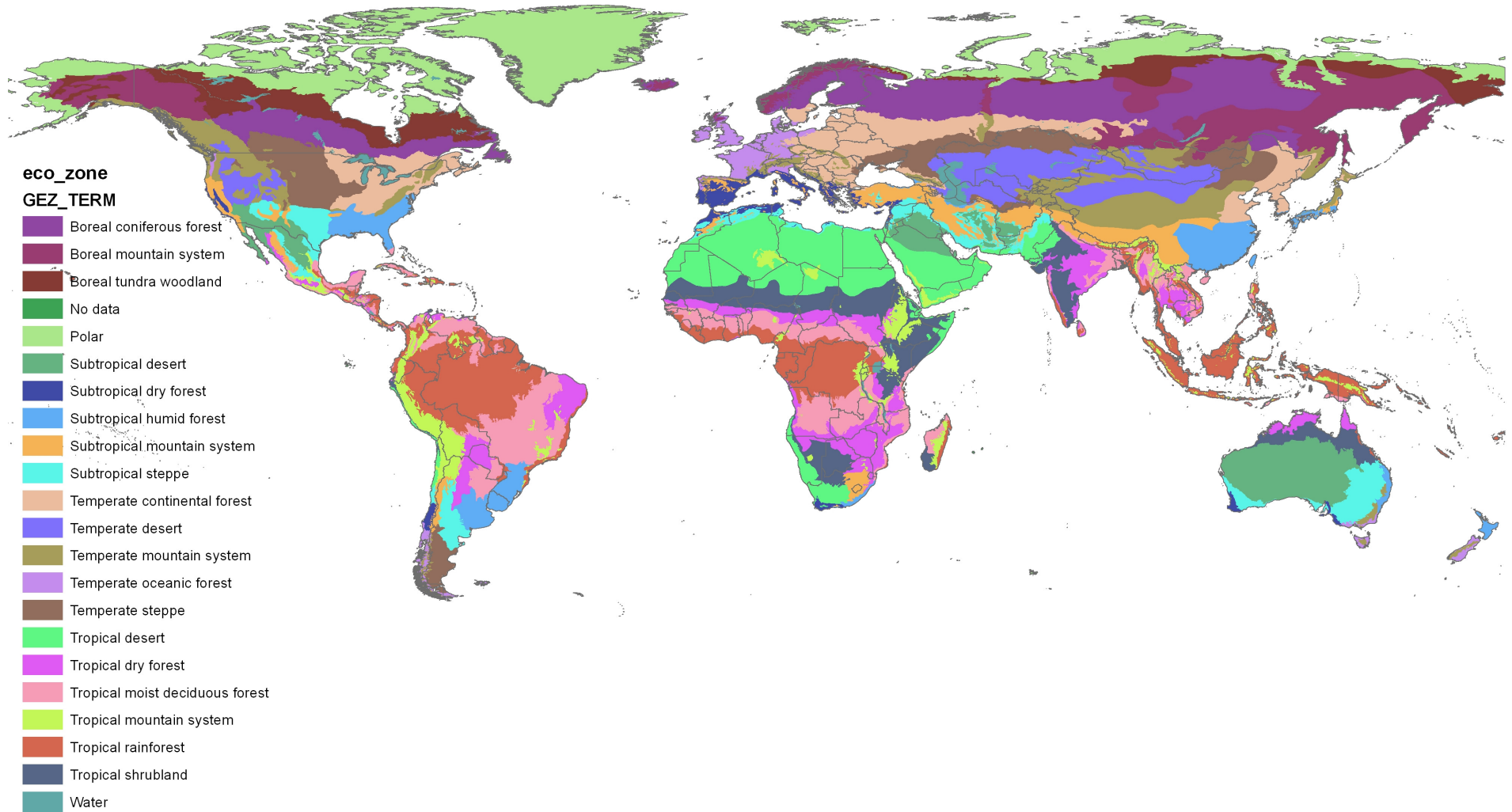
Rudi Drigo,
Matieu Henry, Renato Cumani

WISDOM = Woodfuel Integrated Supply/Demand Overview Mapping

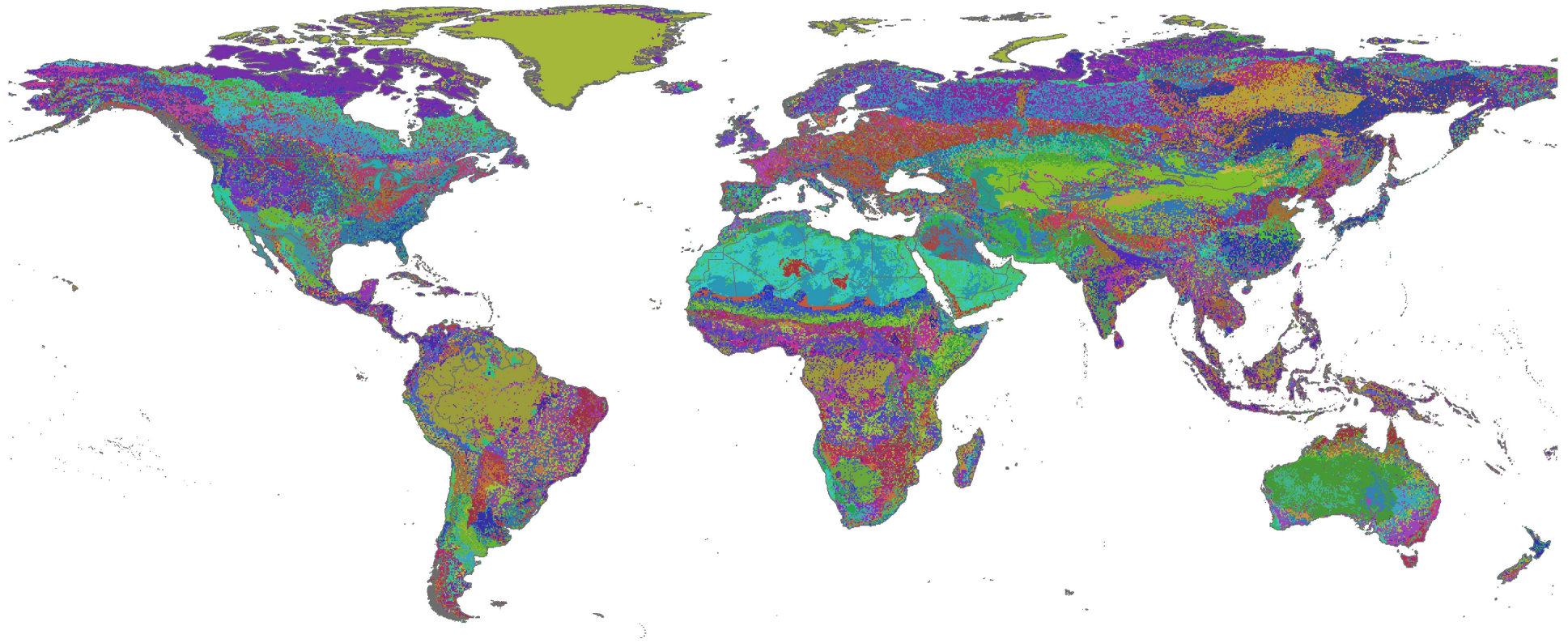
Globcover 10arc-sec (300m)



Global Ecological Zone (FAO FRA 2000)

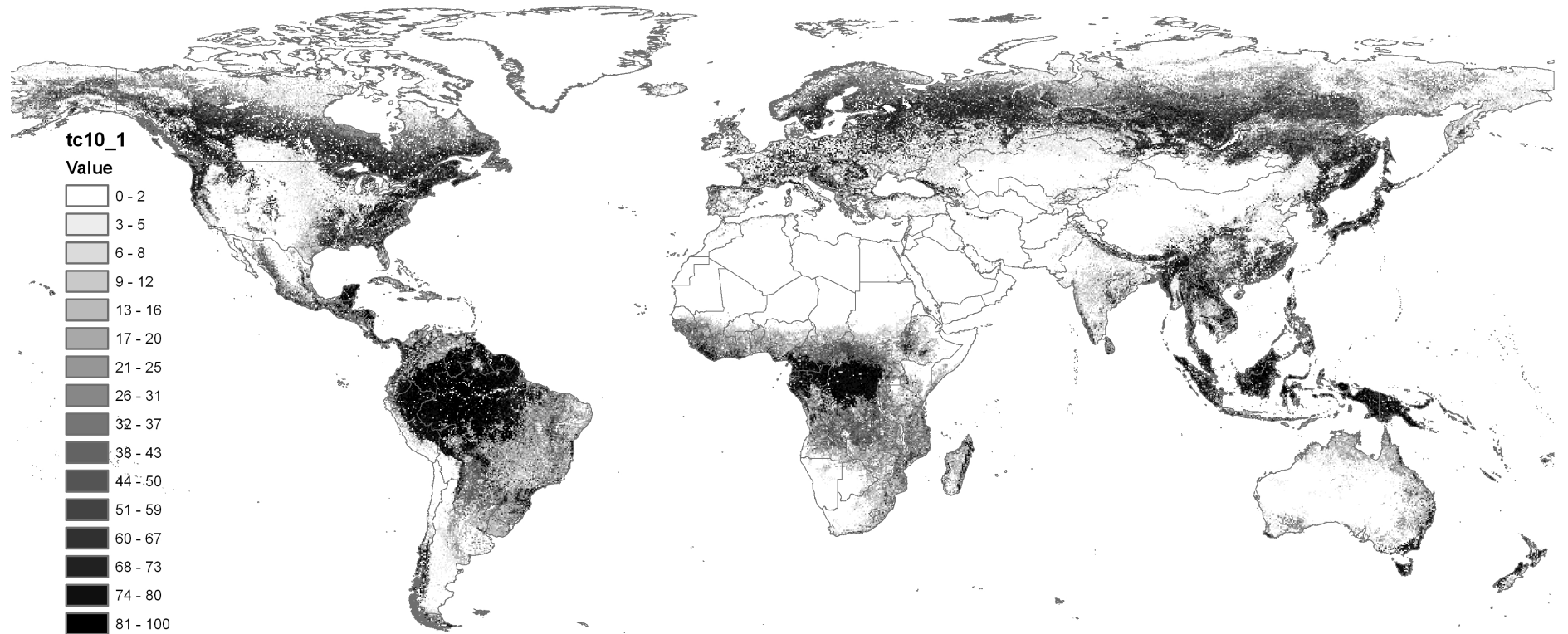


Combined Globcover and Global Ecological Zone



52 GLC x 20 GEZ = 1040 glc_eco classes

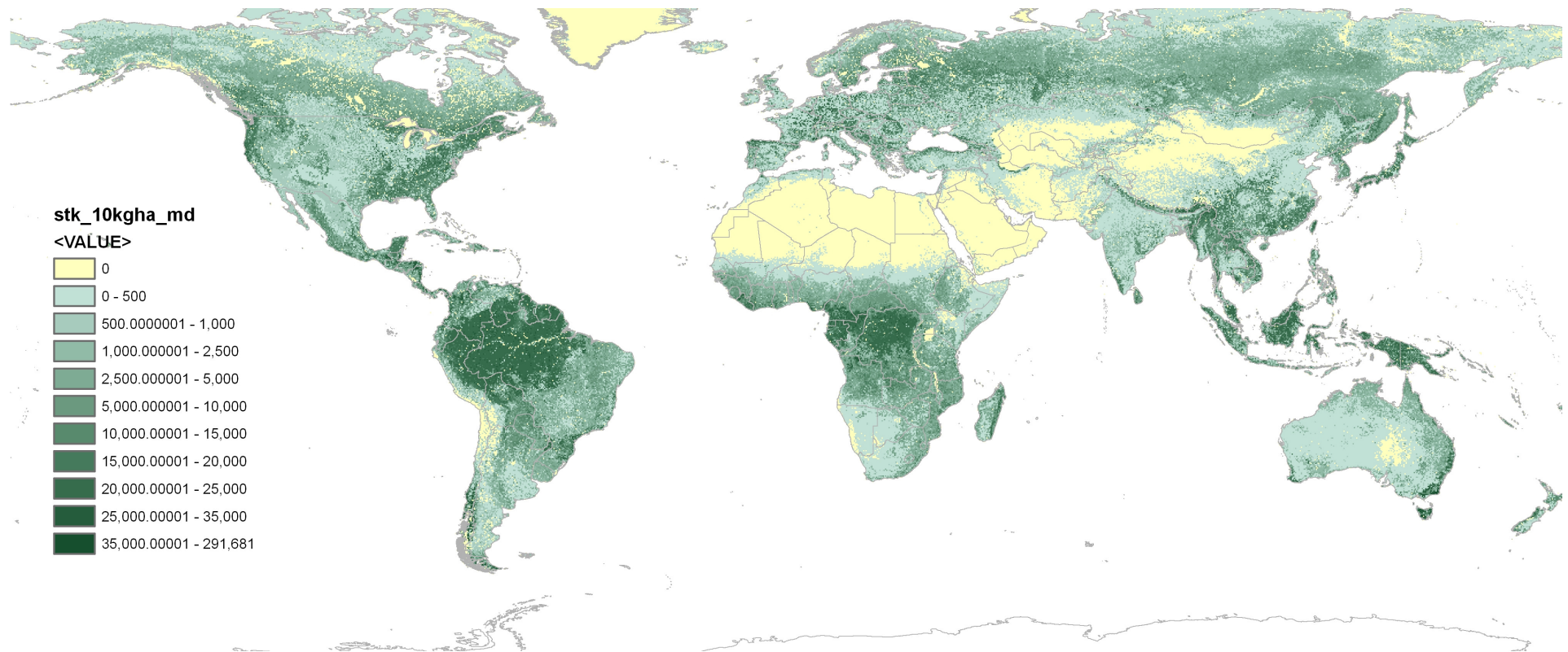
MODIS VCF Tree Cover Percent (Hansen et al. 2003)

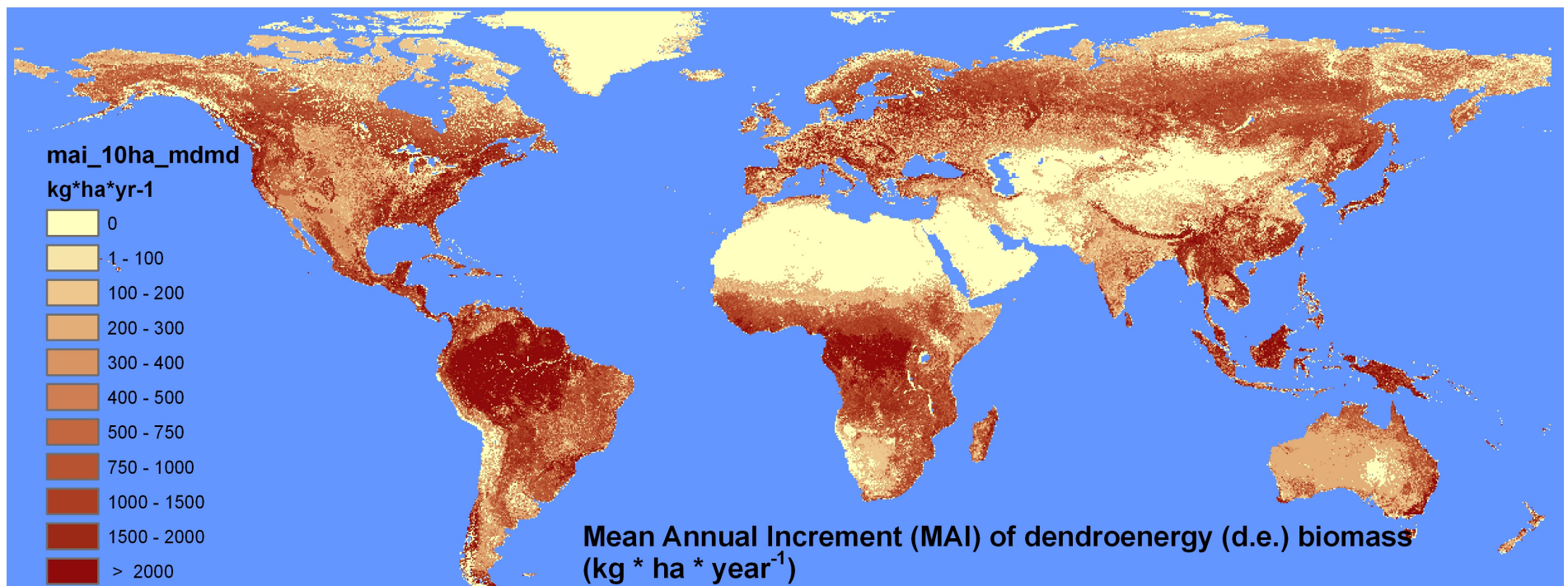
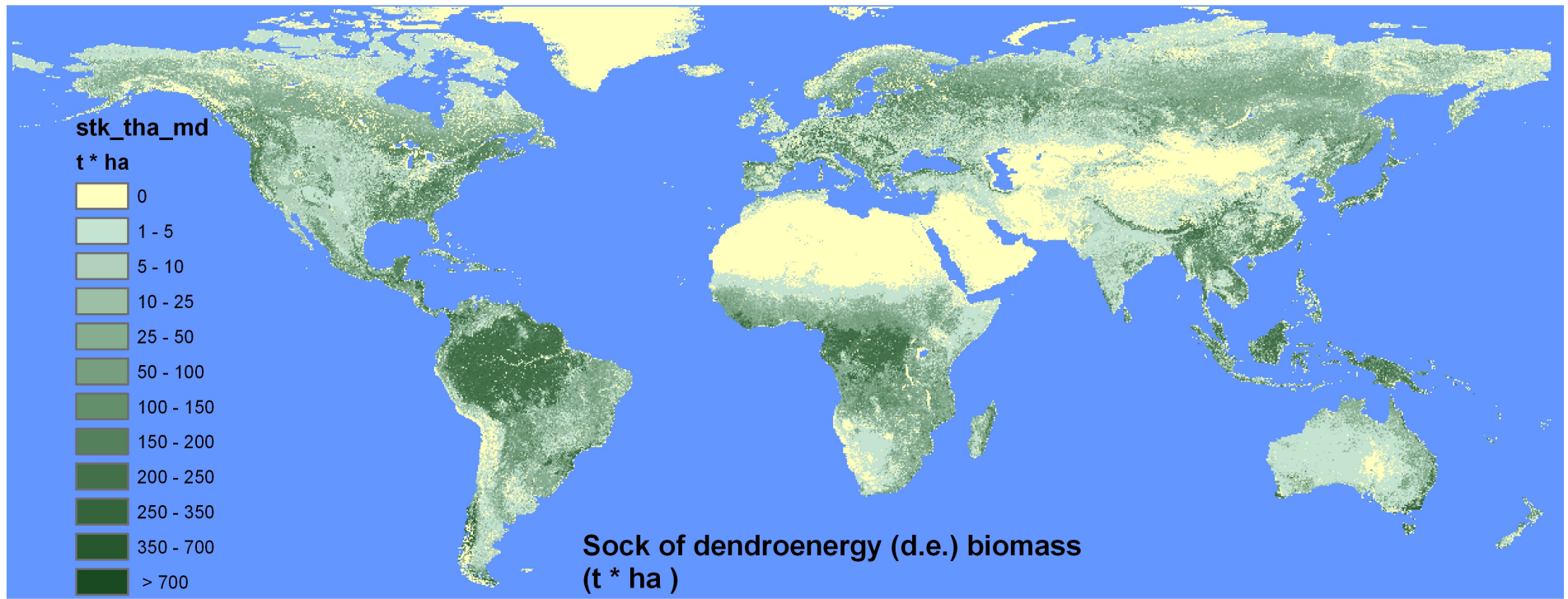


Field observations

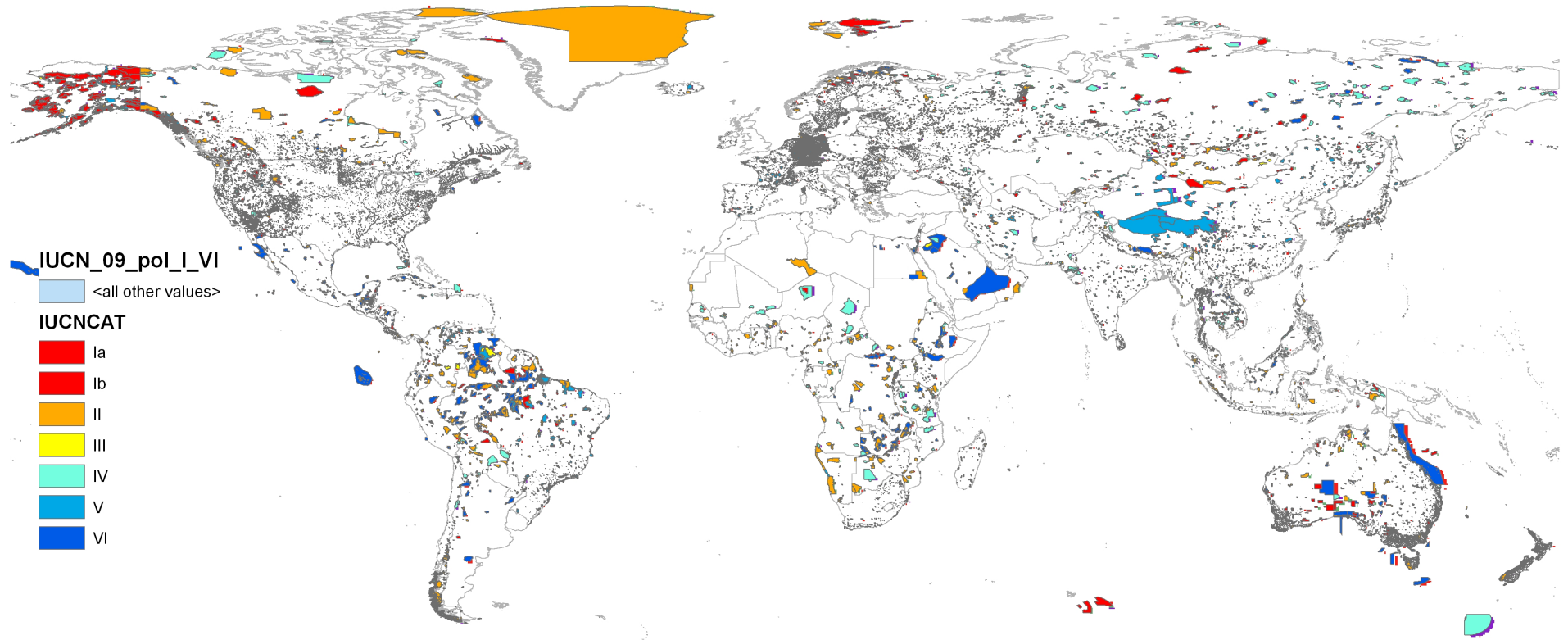
Globcover "masterclasses"		Broadl. evergr. or s.decid. forest	Broadl. decid. forest	Needle- leaved evergr. forest	Needle- leaved decid. forest	Mixed forest	Mangrove	Shrubland (<5m)	Total
FAO Global Ecological Zones	code	B1	B2	N1	N2	B-N	B5	S	
Tropical rainforest	11	2367	60				38	15	2480
Tropical moist deciduous forest	12	49	429	26		9	5	51	569
Tropical dry forest	13	30	408	30		8	6	240	722
Tropical shrubland	14	37	18					36	91
Tropical desert	15		1						1
Tropical mountain system	16	12	25	2		1		3	43
Subtropical humid forest	21	21	25	76	2		7	3	134
Subtropical dry forest	22	7		12				4	23
Subtropical steppe	23	46		6				14	66
Subtropical desert	24	3						29	32
Subtropical mountain system	25	1	3	93				6	103
Temperate oceanic forest	31	10	111	235	5			5	366
Temperate continental forest	32		609	1050	69	2			1730
Temperate steppe	33		169	253	3				425
Temperate desert	34			26					26
Temperate mountain system	35	39	122	242	51	1			455
Boreal coniferous forest	41		200	579	59				838
Boreal tundra woodland	42		5	9	1				15
Boreal mountain system	43		79	147	137				363
Polar	50		3	2	23				28
Total		2622	2267	2788	350	21	56	406	8510

Aboveground biomass stock (medium variant)



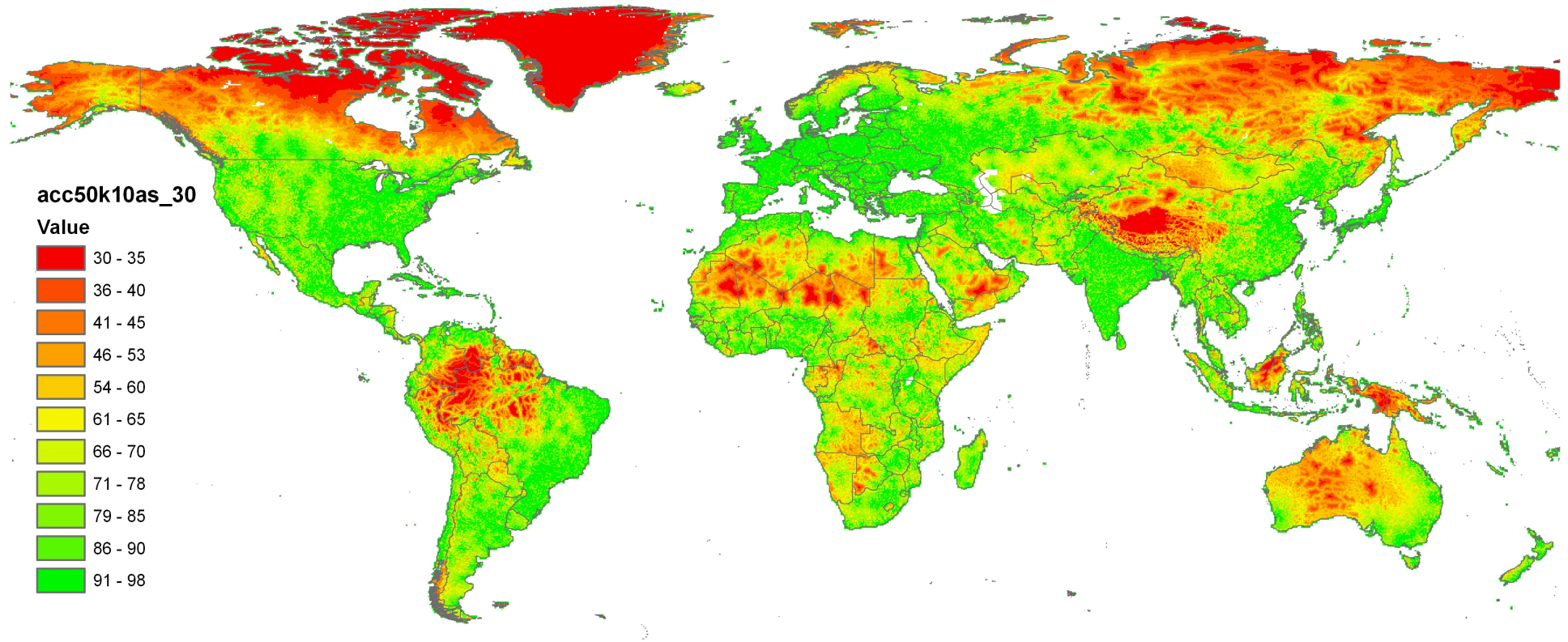


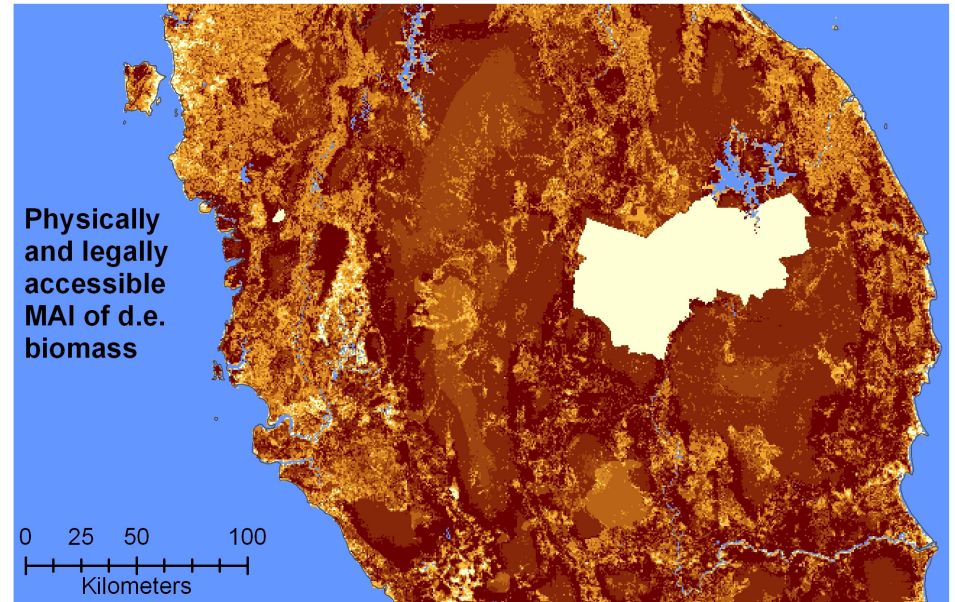
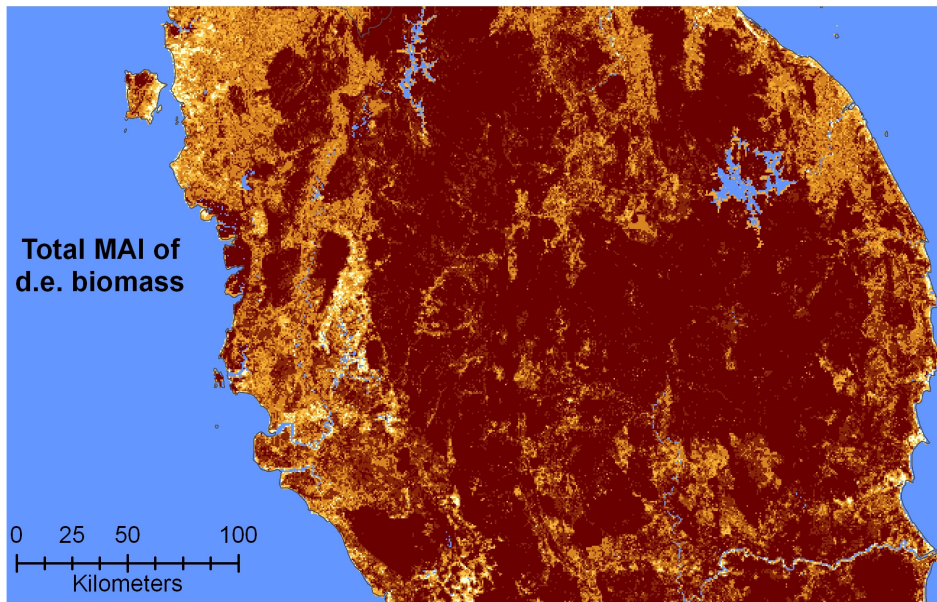
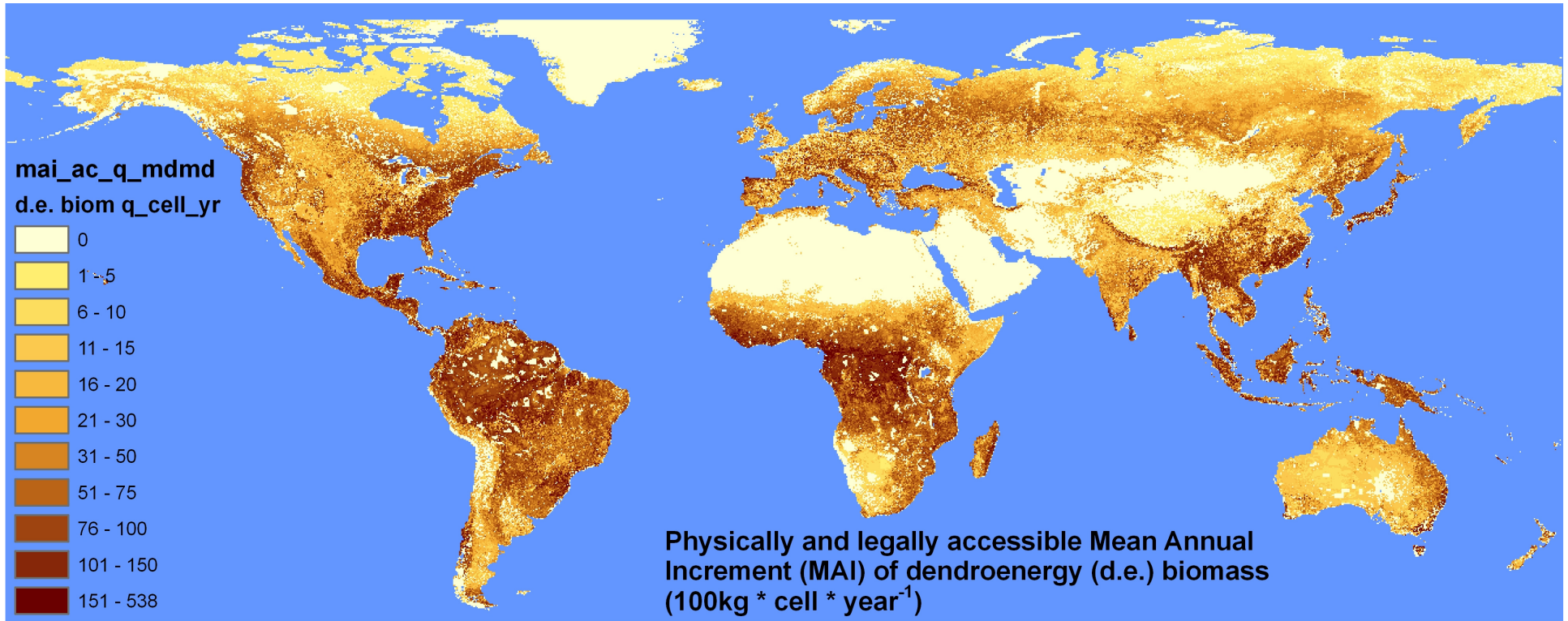
Protected areas IUCN / WCMC / UNEP



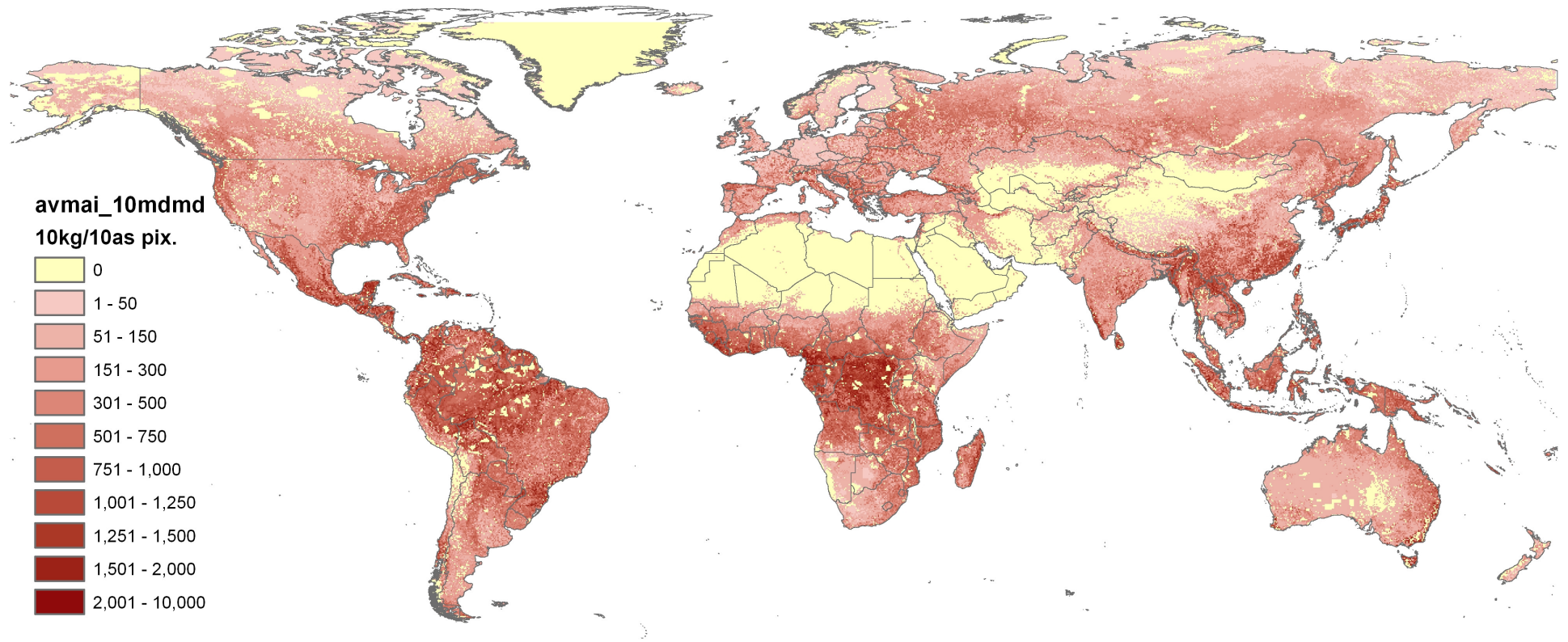
Physical accessibility

Nelson, A. Estimated travel time to the nearest city in year 2000. JRC





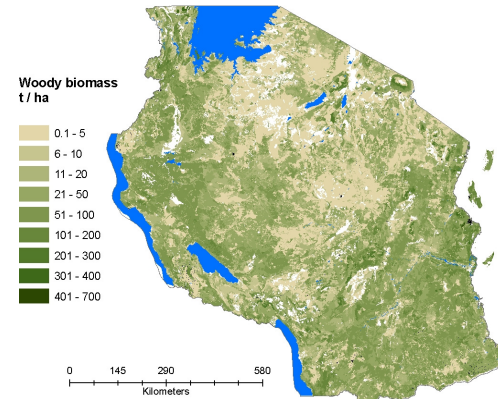
Woody biomass accessible and potentially available for energy



WISDOM, biomass assessment and risk mapping

1 . SUPPLY module

- land use/land cover
- biomass for energy from:
 - forests, OWL, shrubs,
 - plantations, orchards,
 - other land uses
 -

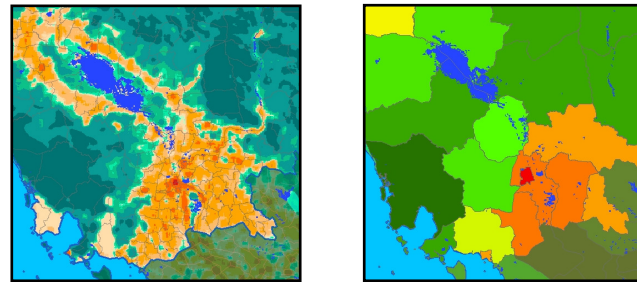


2 . DEMAND module

3. INTEGRATION module

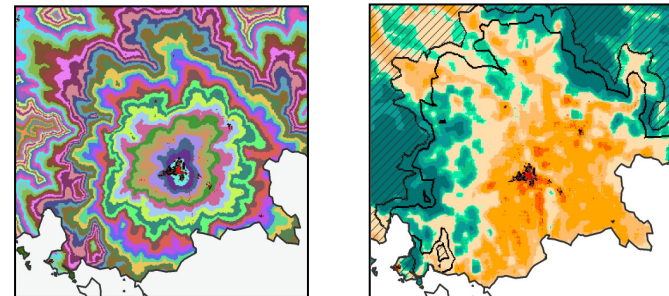
4. Priority areas

By pixel
By units



5. Commercial supply potential

6. Woodshed analysis / Biodistrict delineation



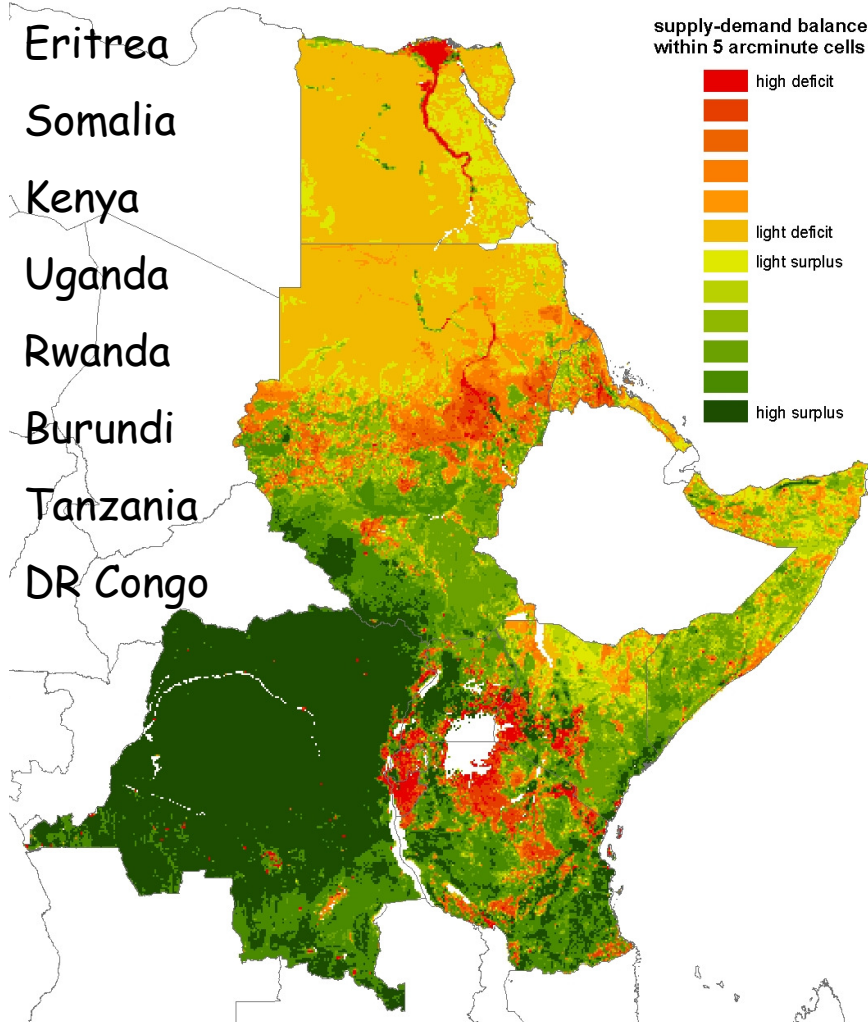
Regional WISDOM studies

Egypt
Sudan

African countries
covered by Africover

Continental SE Asia
(Poverty mapping Project)

Eritrea
Somalia
Kenya
Uganda
Rwanda
Burundi
Tanzania
DR Congo



Myanmar
Yunnan (China)
Vietnam
Laos
Thailand
Cambodia
Malaysia

