



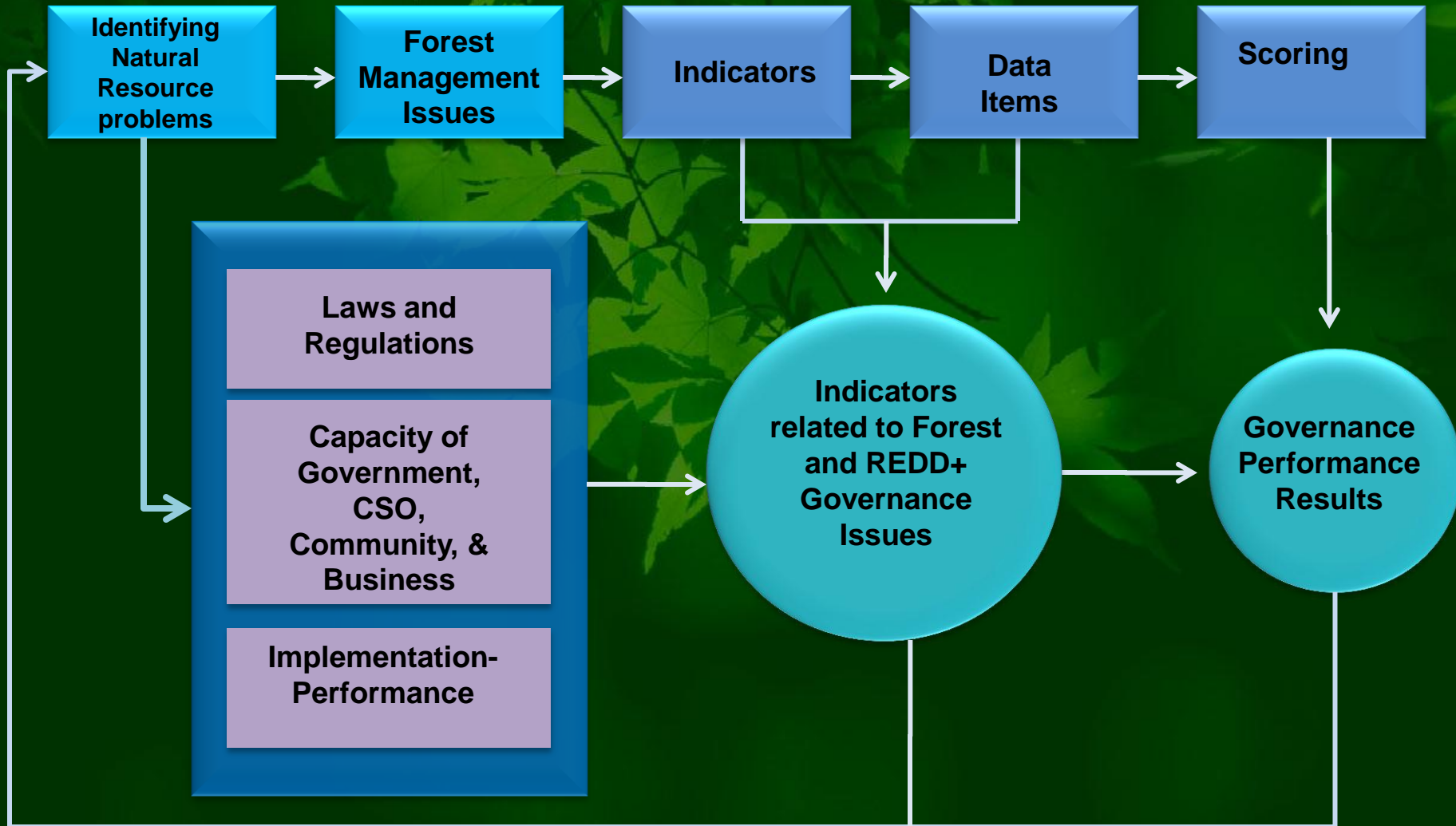
# Experience of the PGA Pilot Project in Indonesia: Defining the scope of the assessment

## PGA FOR REDD+ IMPLEMENTATION IN INDONESIA

Implemented by **UNDP INDONESIA**  
Partnering with **Ministry of Forestry, UKP4 and Ministry of Development Planning**  
Supported by **UN-REDD GLOBAL Programme**  
Working Closely with **Civil Society Organizations, Indigenous Organizations, Sub-national Government , and academicians**

Jossi Katarina, LLM-PGA Expert Panel Member

# Developing PGA indicators



## Definition of Forest Management Issues

The said forest planning pertains to **the status and functions of forests**. Meanwhile, the said regional planning issues relate **to the structure and patterns of space** for the regional development

The said regulating of rights relate to **the clarity/ certainty of rights** to forests and by the right holders (Adat/local Community and permit holders) as well as their administrative system and conflict resolution mechanism

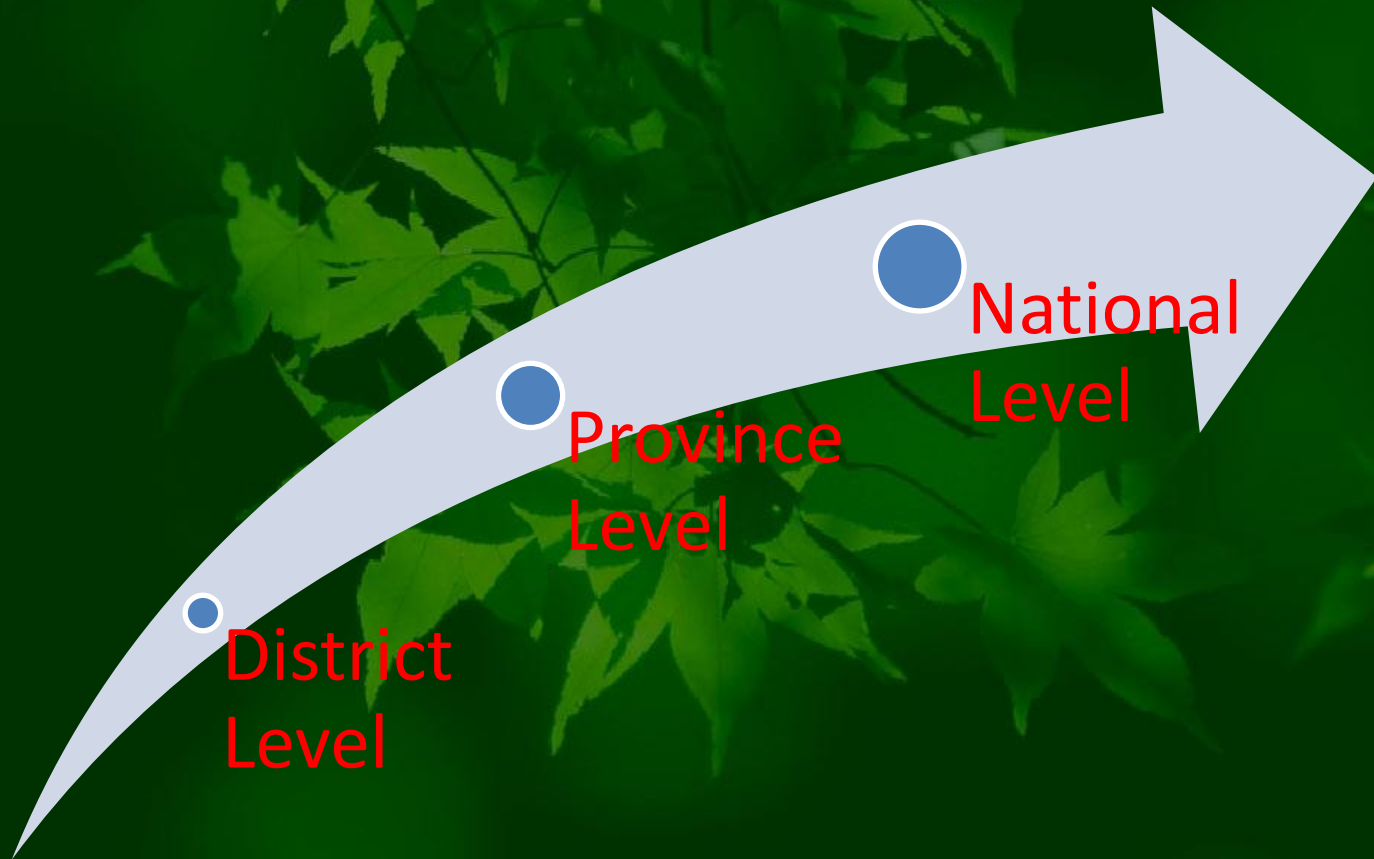
The said organization refers to the capacity of the **actors and relationship among the actors** in the implementation of the forest and peat land as to provide effective and efficient services. While the actors here include individuals and institutions

The said forest and peat land management refer to a number of activities comprising: **forest management implementation, utilization, rehabilitation and protection**

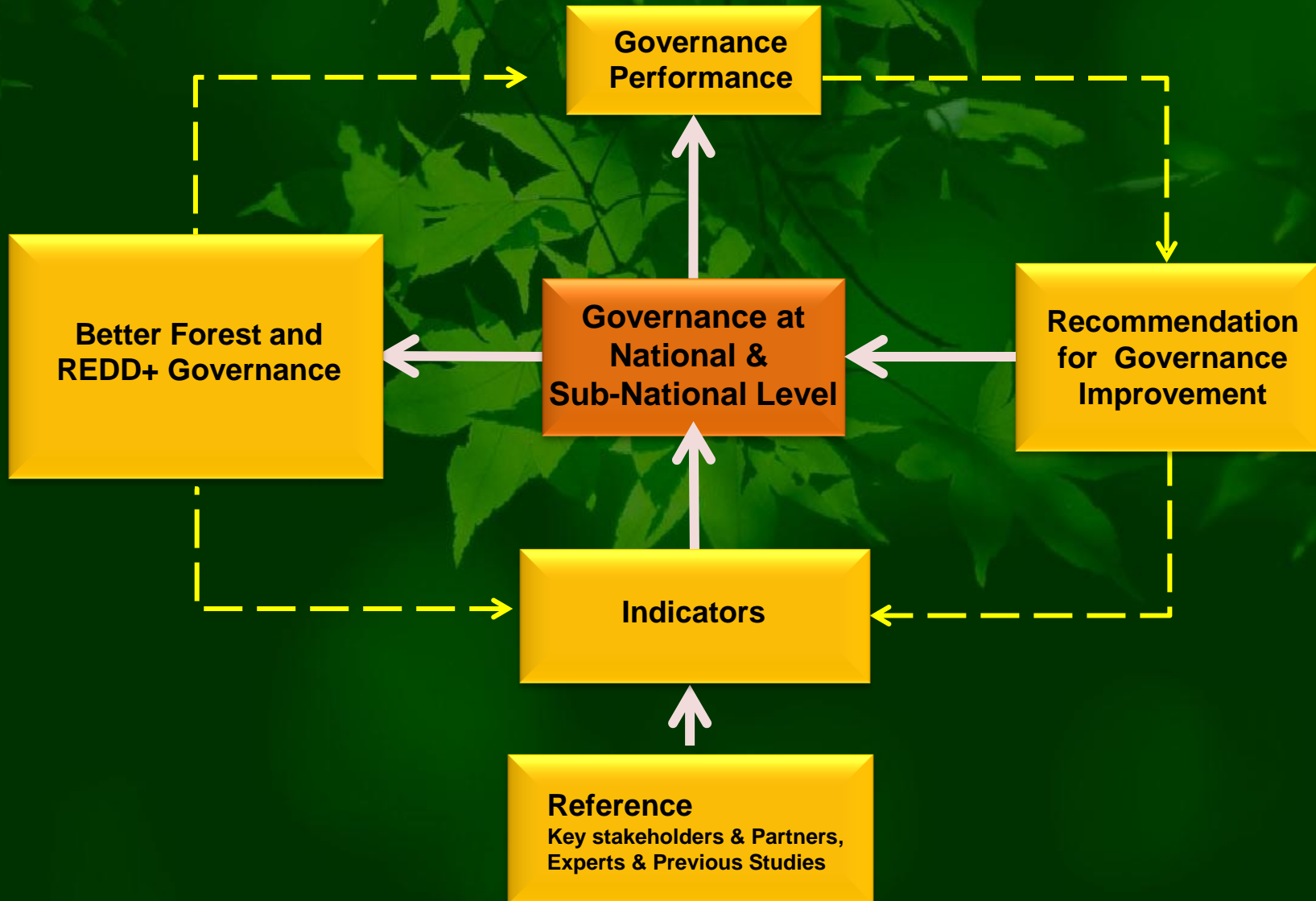
The term Control here refers to the capacity of **internal and external supervision** in implementing and enforcing criminal law and administrative law in the management of forests and peat lands

REDD + infrastructure here refers to **the components that need to be prepared** by the Government and anticipated by civil society, adat/local community when REDD+ is implemented in Indonesia

# Scope of Indonesia REDD+ PGA



# Participatory Governance Assessment (PGA) System





Thank You Very Much/Terima Kasih Banyak