

Training session introduction

Safeguards and Multiple Benefits

UN-REDD Retreat, Nairobi, 14th January 2014

Lera Miles, UNEP-WCMC



Purpose of session

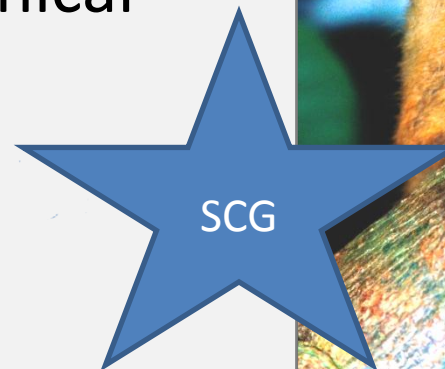


- Common understanding on:
 - safeguards and multiple benefits
 - what UN-REDD can offer
- Demonstrate country support
 - Training/workshop sessions
 - Tutorial on CAST & BeRT
 - Seeking critical feedback
- Tackle your questions/issues



UNFCCC's Cancun Safeguards address benefits & risks of REDD+

- Countries have agreed to promote and support these, & provide info
- Formulation is (necessarily) general – countries need to decide how to apply
- Growing demand for technical support
- Interagency collaboration



The Cancun Agreement (COP16, 2010)

Cancun Safeguards



a. Policy alignment (nat'l & int'l)

g. Displacement

b. Forest governance (transparency & effectiveness)

The Elements of Cancun Safeguards

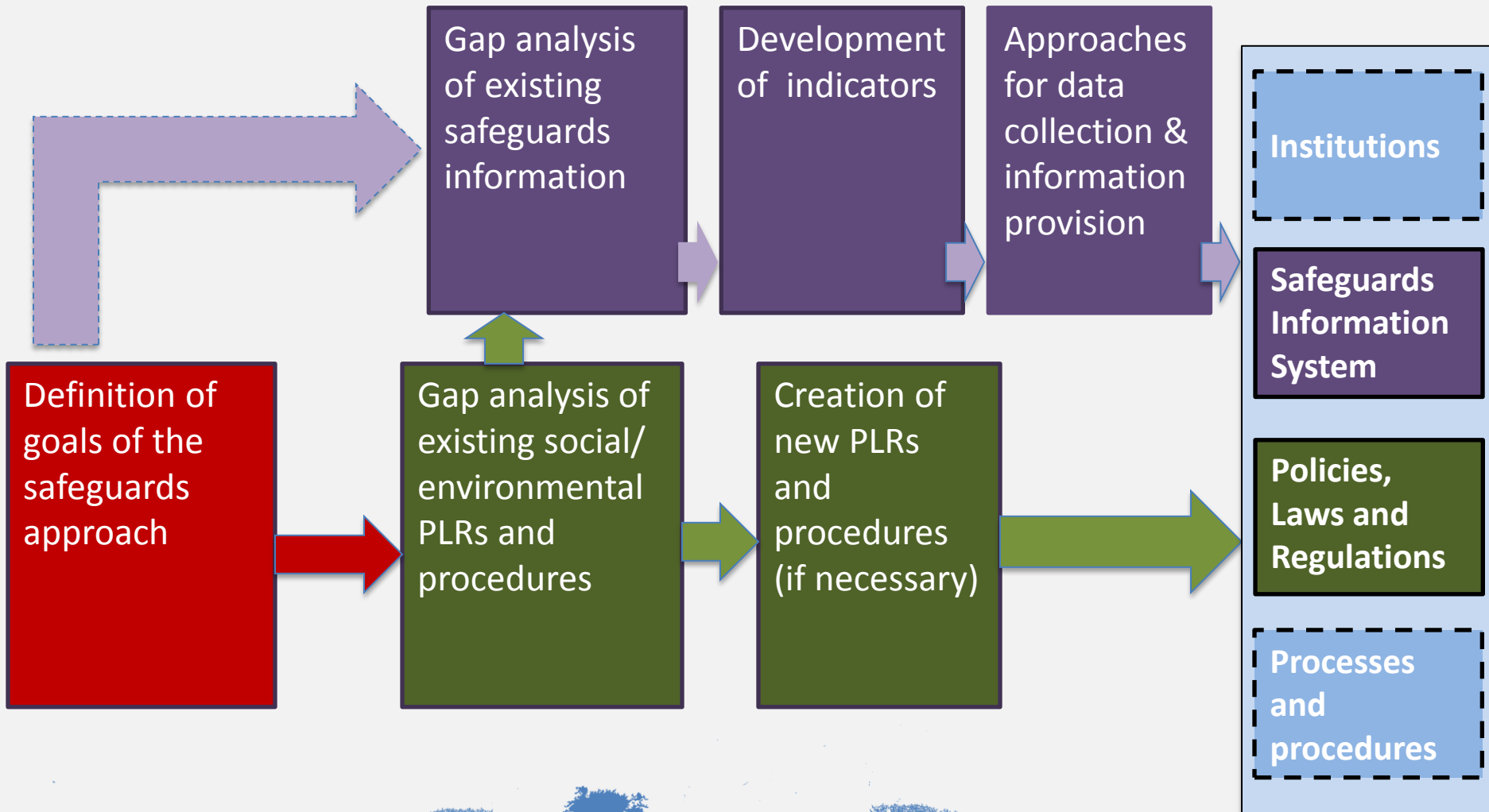
f. Risk of reversals

c. Knowledge and rights of indigenous peoples & local communities

e. Natural forest, biodiversity, social & environmental benefits

d. Full and effective participation of relevant stakeholders, in particular IP & local communities

Conceptual Framework: A country approach to safeguards



Some clarity on the provision of safeguards information

What

- **Summary of information** on how **all** of the Cancun safeguards are being addressed and respected throughout the implementation of REDD+ activities

How and When

- To be included in **National Communications** to UNFCCC (or communication channels agreed by the COP)
- ..and on a **voluntary basis**, through the **UNFCCC web platform**
- **Start at the time of implementation of REDD+** activities
- Most recent summary required **before receiving results-based finance**

Safeguards lead to multiple benefits

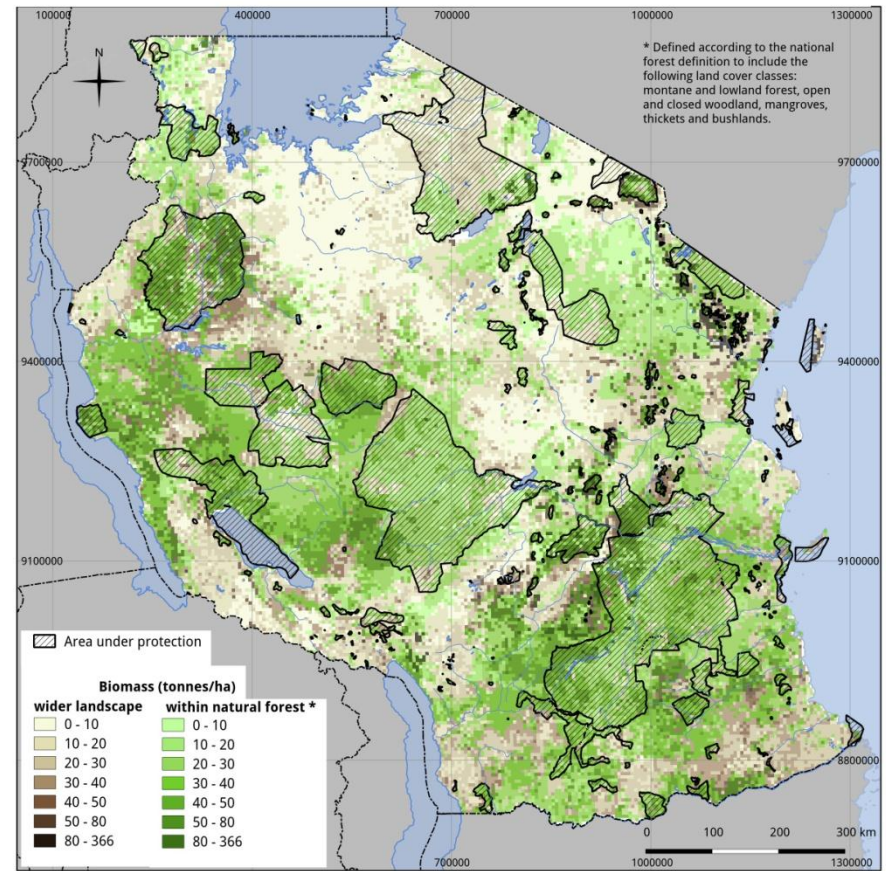
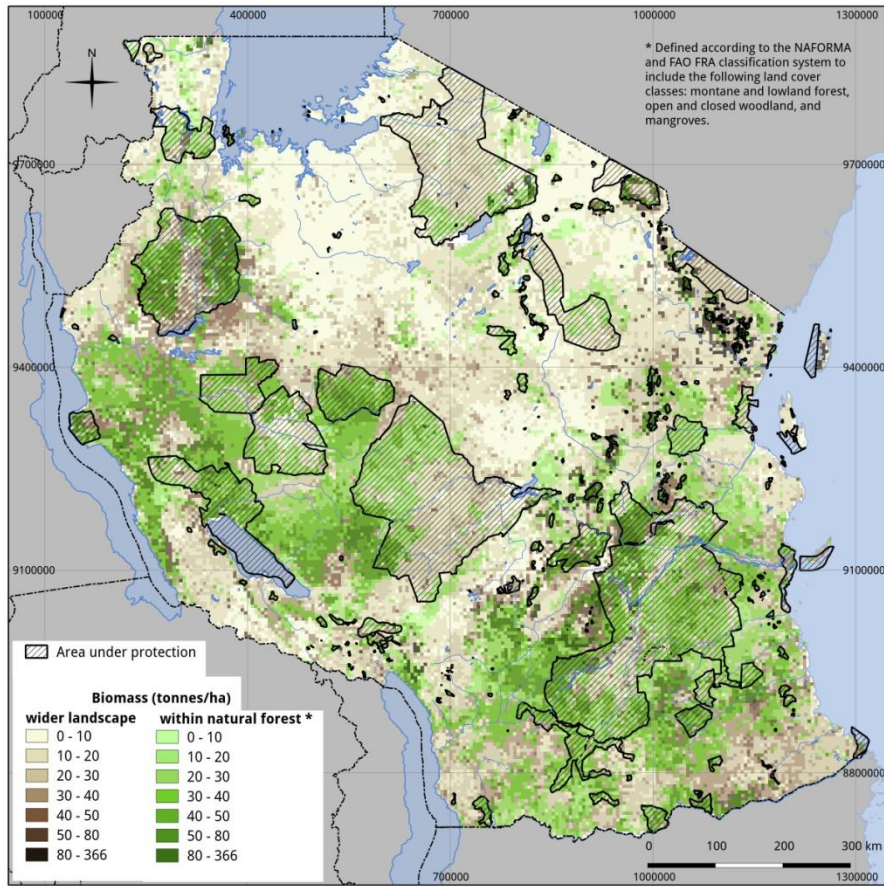
- Part of safeguard (e): actions are.. used to ... **enhance other social and environmental benefits**
- Designing REDD+ actions to deliver these benefits also helps to:
 - ensure communities & IPs benefit from REDD+
 - meet national goals on development & environment
- **Where, what** REDD+ actions and **how** these are implemented influence benefits



APPROACH	Impacts on:						Cost	Ease of measuring carbon benefits	
	Carbon	Biodiversity	Soil	Water	NTFPs	Livelihoods			
REDUCING DEFORESTATION:									
Maintaining natural forest and preventing conversion								\$	
Promoting the use of non-timber forest products (NTFPs) at sustainable harvesting levels to provide alternative livelihoods								\$	
Intensification of agriculture (annual or tree crops) with conventional methods using high energy and chemicals input, to decrease conversion pressure							\$\$		
Change from conventional agriculture to organic farming to decrease conversion pressure by increasing profitability							\$		
REDUCING FOREST DEGRADATION / SUSTAINABLE MANAGEMENT OF FOREST:									
Change from conventional logging to Reduced-Impact Logging (RIL) in production forest							\$		
Enrichment planting in moderately degraded / logged over forest							\$\$		
Fire control to prevent fire through raised awareness and increased enforcement in forest areas at risk							\$		
ENHANCING FOREST CARBON STOCKS:									
Rehabilitation of significantly degraded land through (assisted) natural regeneration							\$		

Carbon stocks and existing protection in natural forest - Tanzania

Carbon + natural forest + protected areas



Map sources:

Natural forest: NAFORMA landuse landcover map 2010.

Biomass: NAFORMA woody biomass only. 5km preliminary dataset base on field data only.

Protected Areas and Forest Reserves: TFS and WDPA 2013.

How we support countries on mapping and land-use planning

- Advancing towards **practical** decision support
 - Where REDD+ actions feasible (suitability, costs)
 - Integrating safeguards
- **Collaborative working sessions**
 - Designing & doing analysis, bringing together data from national and other sources
- **Training** on GIS techniques
 - Including transition to open-source




Tuesday

Breakout sessions	Tools for developing a national approach to safeguards (Lucy and Blaise)	How spatial analysis can support REDD+ planning (Charlotte and Judith)	Economic analyses for REDD+ (Rob and Ralph)
1600	First run		
1645	Second run		

Wednesday

9.00	Plenary discussion 1) What worked well in breakout sessions? What could improve? 2) Outstanding questions or issues on safeguards and multiple benefits
9:30	End of session



Thank you for listening!

Lera.Miles@unep-wcmc.org

