

# MRV Country Presentation (ECUADOR)

(Guillermo Sánchez R.)

---

*The United Nations Collaborative Programme  
on Reducing Emissions from Deforestation  
and Forest Degradation in Developing Countries*

**UN REDD Programme**



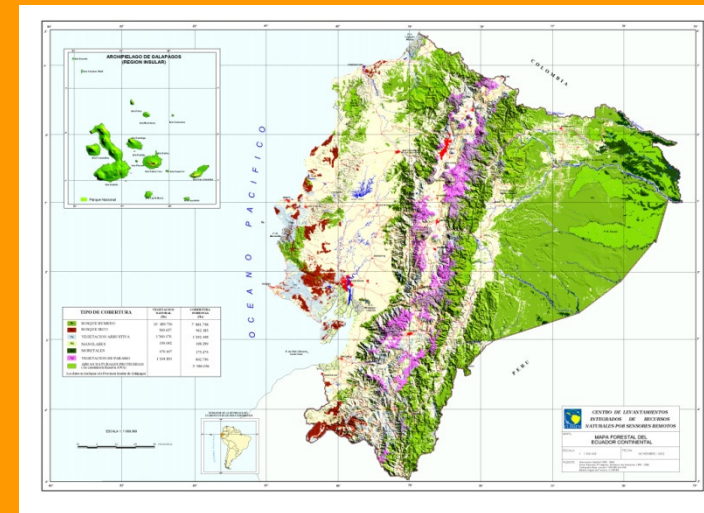
MRV meeting with UN REDD Countries – Rome, September 10 to 11<sup>th</sup> 2009

# Country information

- Country area: 257 000 km<sup>2</sup>
- Forest area: 8 million hectares

Data sources:

- vegetation map (2000)
- Land use map



Classification of forest vegetation : Evergreen forest (2 types), Dry Forest (3 types), Mangrove forest, Andean evergreen forest (3 types).

**UN REDD Programme**

MRV meeting with UN REDD Countries – Rome, September 10 to 11<sup>th</sup> 2009

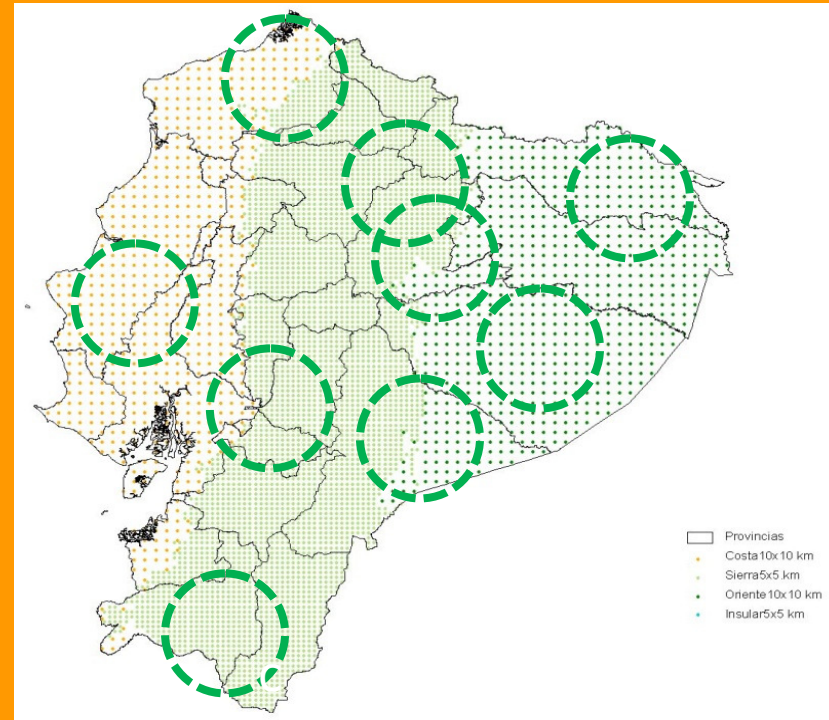
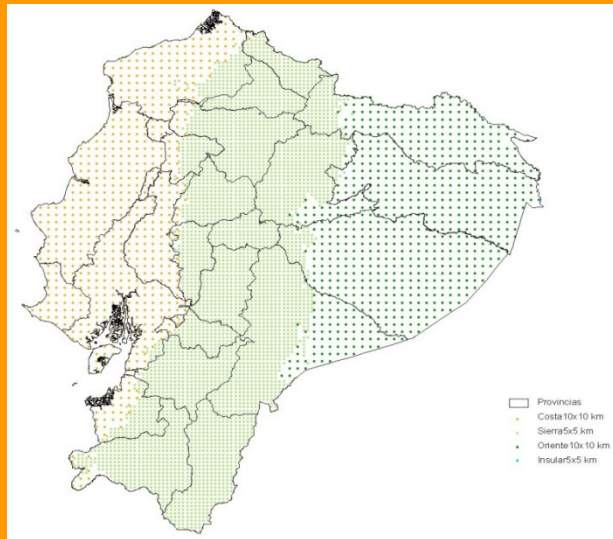


# NFIs and national assessment/monitoring programmes

- At the moment the Ministry of Environment of Ecuador is developing the methodology for the NFI, which is planned to begin in 2010.

# NFIs design

## PREVIOUS DESIGN



**UN REDD Programme**

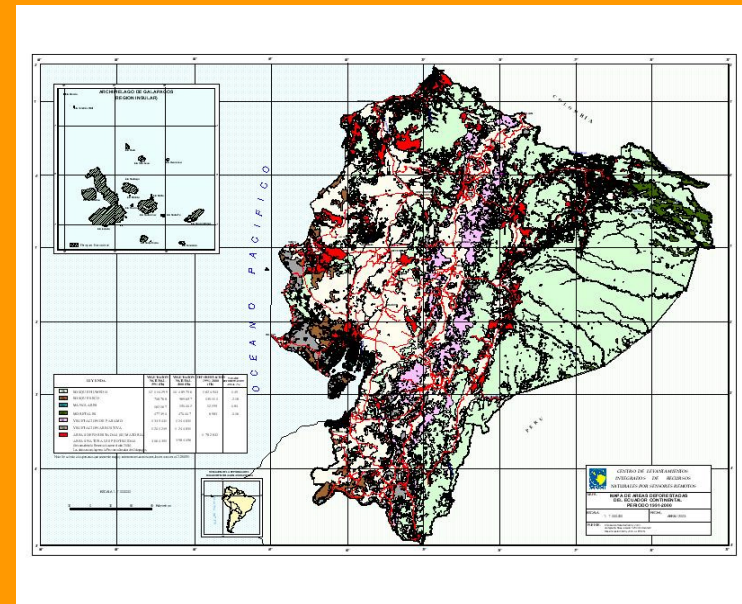
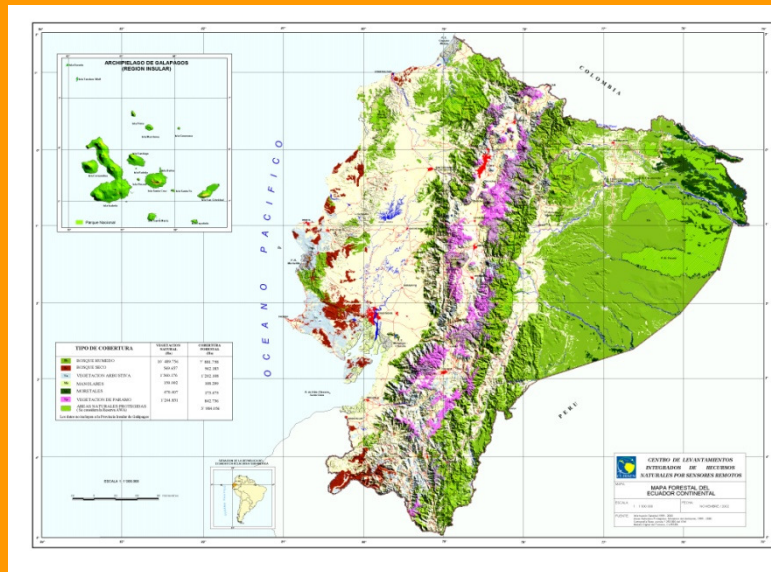
MRV meeting with UN REDD Countries – Rome, September 10 to 11<sup>th</sup> 2009



# Remote sensing survey

- Vegetation map (2000)
- Forest data

National classification	Year 1 991 (ha)	Year 2 000 (ha)
Tropical forest	12 114 299	10 489 756
Dry forest	708 768	569 657
Mangrove	162 197	150 002
Swamps	477 390	470 407
Andean vegetation (páramos)	1 335 431	1 244 831
Grubs	1 201 249	1 360 176



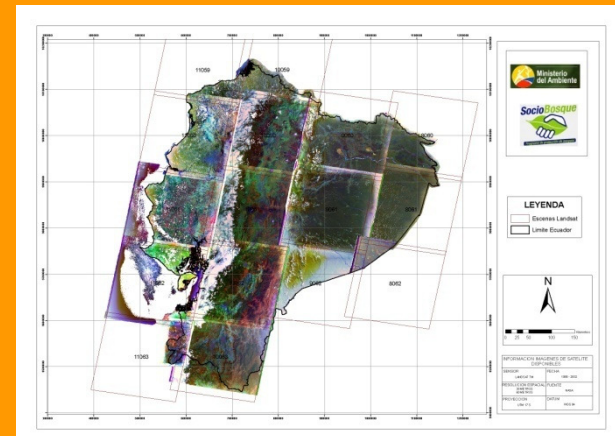
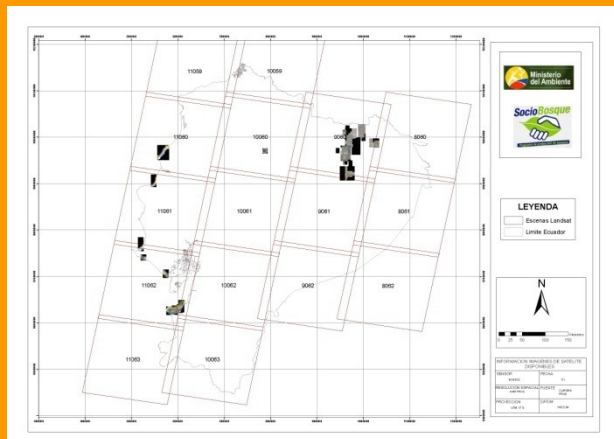
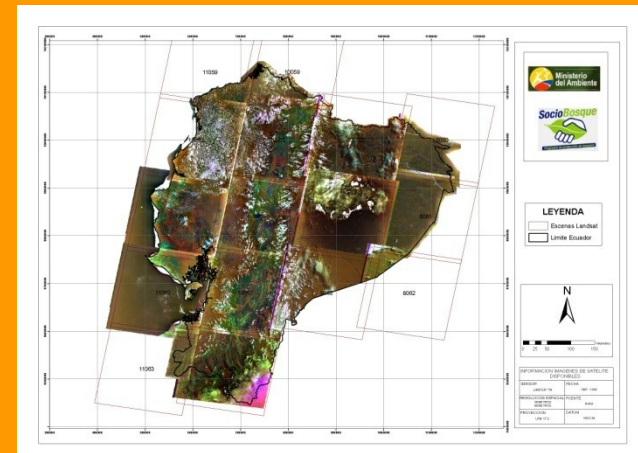
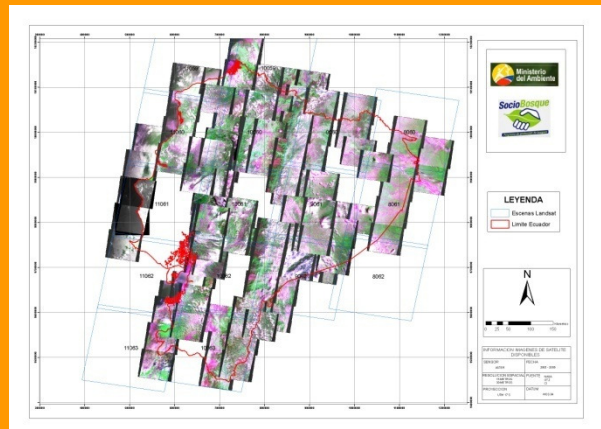
UN REDD Programme

MRV meeting with UN REDD Countries – Rome, September 10 to 11<sup>th</sup> 2009



# Forest carbon estimates

## REFERENCE ESCENARIOY OF DEFORESTATION



UN REDD Programme

MRV meeting with UN REDD Countries – Rome, September 10 to 11<sup>th</sup> 2009



# Forest carbon estimates

## PREVIOUS DESIGN

It is planned to develop allometric equations for 9 ecosystems.

The design of the NFI will take in consideration models to determine carbon emissions and carbon stocks.

# Conclusion

- The Ministry of Environment of Ecuador (MAE) is developing a project for NFI in 2010, this design will take in consideration models to determine carbon emissions and carbon stocks.