

UN-REDD
PROGRAMME



Pacific region web portal status

<https://pacific-islands.fms.org/>

<http://178.33.8.113/portal/>



Pacific Islands Forest Monitoring System Portal



Feedback

Statistics

Español

English

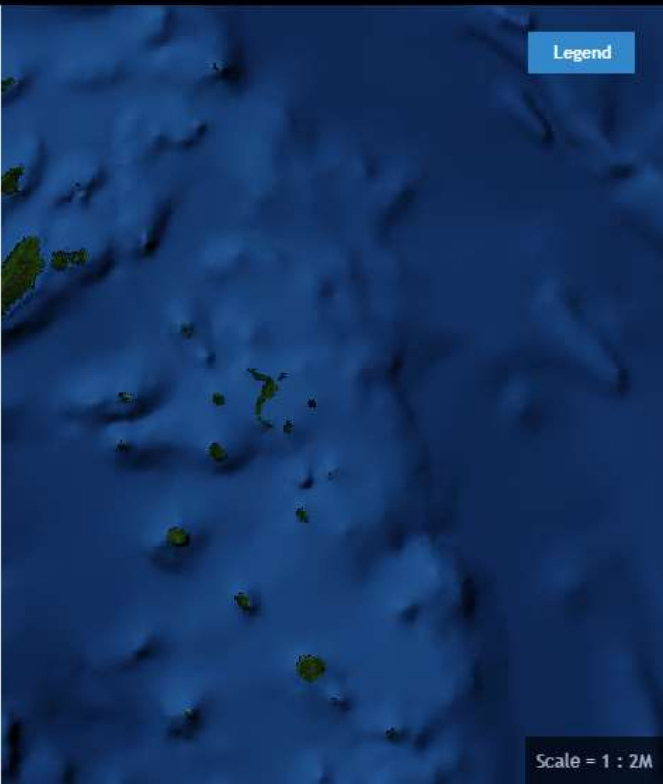
Français



Layers Selected layers

- ▶ Base Layers
- ▶ Administrative Layers
- ▶ Forest Area

Legend



Pacific Region Project

UN-REDD
PROGRAMME



- FAO is working with Secretariat for Pacific Community and Pacific Country governments to deliver technical support on forest monitoring and inventory for REDD+ in the Pacific
- The technical support includes field-based forest inventory training courses, remote sensing/GIS training, and regional training courses on REDD+
- **A regional web-portal for National/Regional Forest Monitoring System is being developed**

Project Countries



- Fiji
- Solomon Islands
- Vanuatu
- Samoa
- Tonga
- Cook Islands
- Kiribati
- FSM
- Palau
- Niue
- Marshall Islands
- Tuvalu
- Nauru

Context

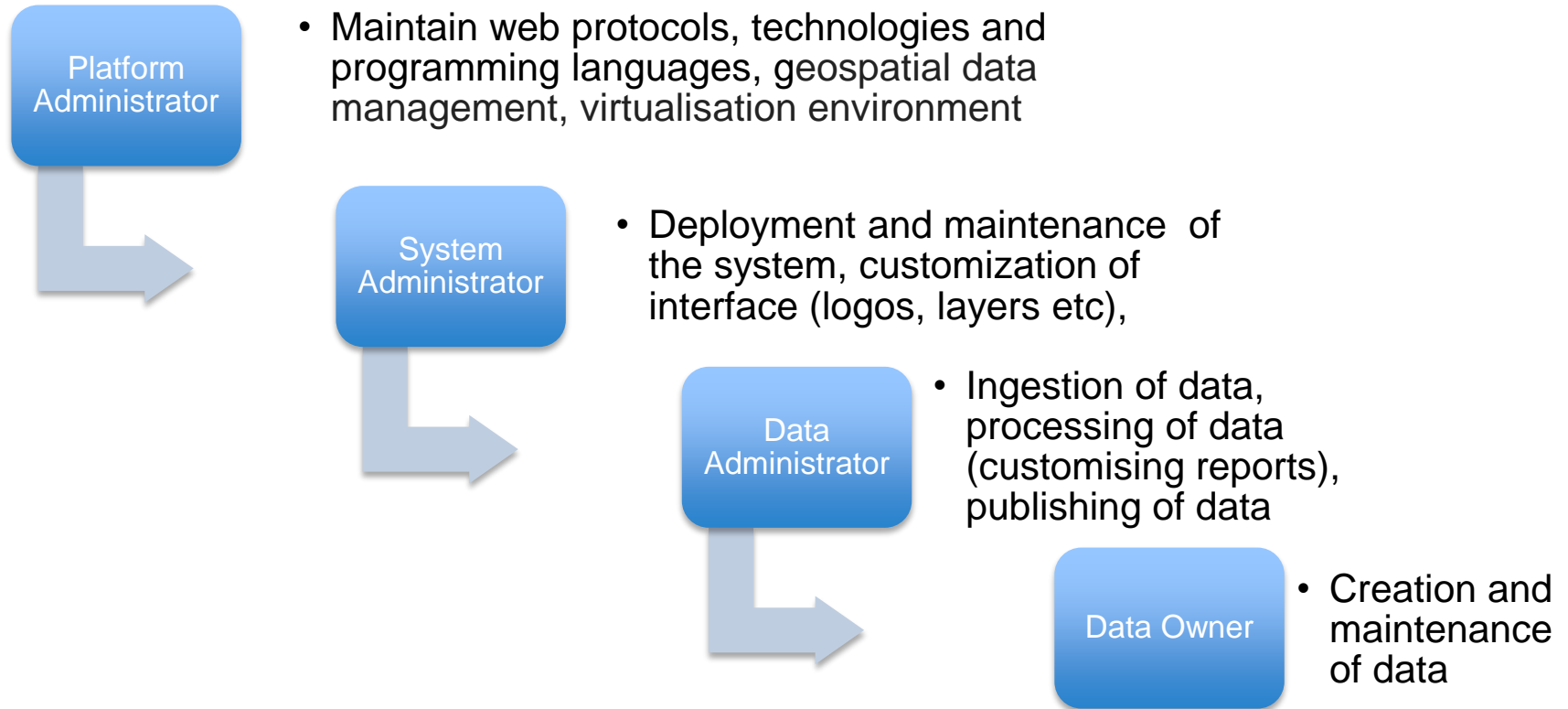
- Wide range of spatial, GIS and remote sensing expertise within the region
- Land use mapping and forest mapping often outsourced to SPC
- Limited examples of up-to-date land use statistics or land use change statistics
- Inconsistent definitions between forestry and agriculture
- Inconsistent land use classifications between time periods
- Limited time series of cloud free satellite data
- Most forest cover mapping has focussed on commercial
- Many web-portals in the region both national and regional

Approach



- Utilises a regional agency for delivery based on the following:
 - Assumption that the burden of maintaining web-GIS portal platform (inc web protocols, technologies and programming languages, Geospatial data management) is high for a single country and may be better served by a centralised delivery agency (lower development and maintenance costs)
 - Assumption is SPC is a resilient organisation
 - Only data approved by the countries is published
 - A hierarchical approach for engagement with countries which enables them to choose the level of command and control
 - The web-GIS portal will be linked into other REDD+ portals and webpages – to ensure consistency in messaging

Hierarchical Engagement



Progress to date

UN-REDD
PROGRAMME



- Draft Web-GIS Portal has been built
- FAO HQ developer has spent 2 weeks on the job training to SPC Spatial Data administrators
- Fiji have committed to work with the regional web-GIS portal and examined ways to integrate it with their existing web-portal
- Solomon Islands have committed to work with the project team to upload country data
- A regional Land Use Classification Scheme has been developed to improve consistency across the region and through time

Next steps



- Workshops for Pacific island countries on the Portal and Collect Earth (utilising the portal to integrate remote sensing and NFI) – participants to load their own data into the portal
 - Low lying island countries – November 2014
 - Volcanic island countries – February 2015
- Two more missions (November and March) from Rome HQ to SPC to provide on the job training of Web-GIS Portal platform, system and data administration

Challenges

- Data sharing is an issue
- Global products -> there is a need to bring local conditions to the context
- Ownership of a regional portal? (it really is 13 separate portals owned by the countries being maintained by SPC)
- Healthy tension between regional portal and national portals
- Finding/building local capacity
- Identifying a common denominator for country needs
- Meet all country needs with a single software
- Communication with the rest of the team

Summary

- Implementing a regional web-GIS portal that can be customised and allows:
 - Sharing of geographical data
 - Automatically publishes time series maps/information
 - Calculation and publication of statistics
- 13 country within the regional implementation
- Building regional capacity within SPC on how to install, maintain and extend the software
- Fiji is exploring the ability to customise the portal on there own
- Countries with low technical capacity can have a portal with low maintenance required



Pacific Islands Forest Monitoring System Portal



Feedback

Statistics

Español

English

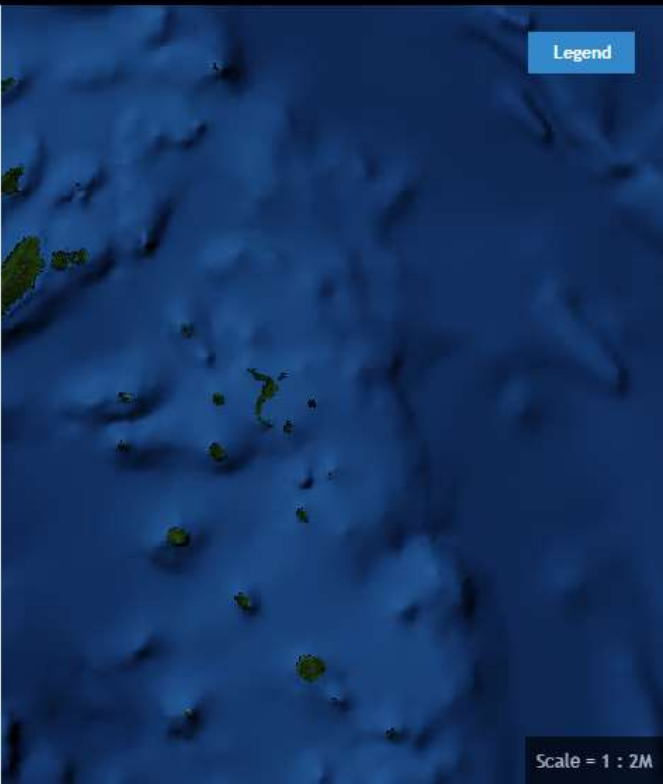
Français



Layers Selected layers

- ▶ Base Layers
- ▶ Administrative Layers
- ▶ Forest Area

Legend



UN-REDD PROGRAMME



Thank you.