

REDD+ A CROSS RIVER STATE : BENEFICES MULTIPLES AU-DELA DU CARBONE.

Présenté par
Bridget Nkor
CRSFC

Programme

REDD+ AU

Nigéria

BUT :

Permettre au Nigéria de contribuer à la réduction du changement climatique par le biais d'une meilleure conservation des forêts et d'une optimisation des modes de vie communautaires durables.

OBJECTIF :

Etablir le mécanisme REDD+ au Nigéria, en utilisant Cross River State comme modèle de démonstration.



Pourquoi choisir Cross River State pour le projet pilote ?

- ✓ Cross River State a été sélectionné pour le projet pilote REDD+ au Nigéria en raison de sa longue histoire de gestion forestière durable à base communautaire, qui remonte à plus de 20 ans ;
- ✓ Cross River State abrite plus de 50 % de ce qui subsiste de la haute forêt tropicale du Nigéria ;
- ✓ Cross River State est aussi considéré comme l'un des 25 points chauds de biodiversité au monde.
- ✓ Il y a une volonté politique.



Multiplés bénéfices au-delà du carbone

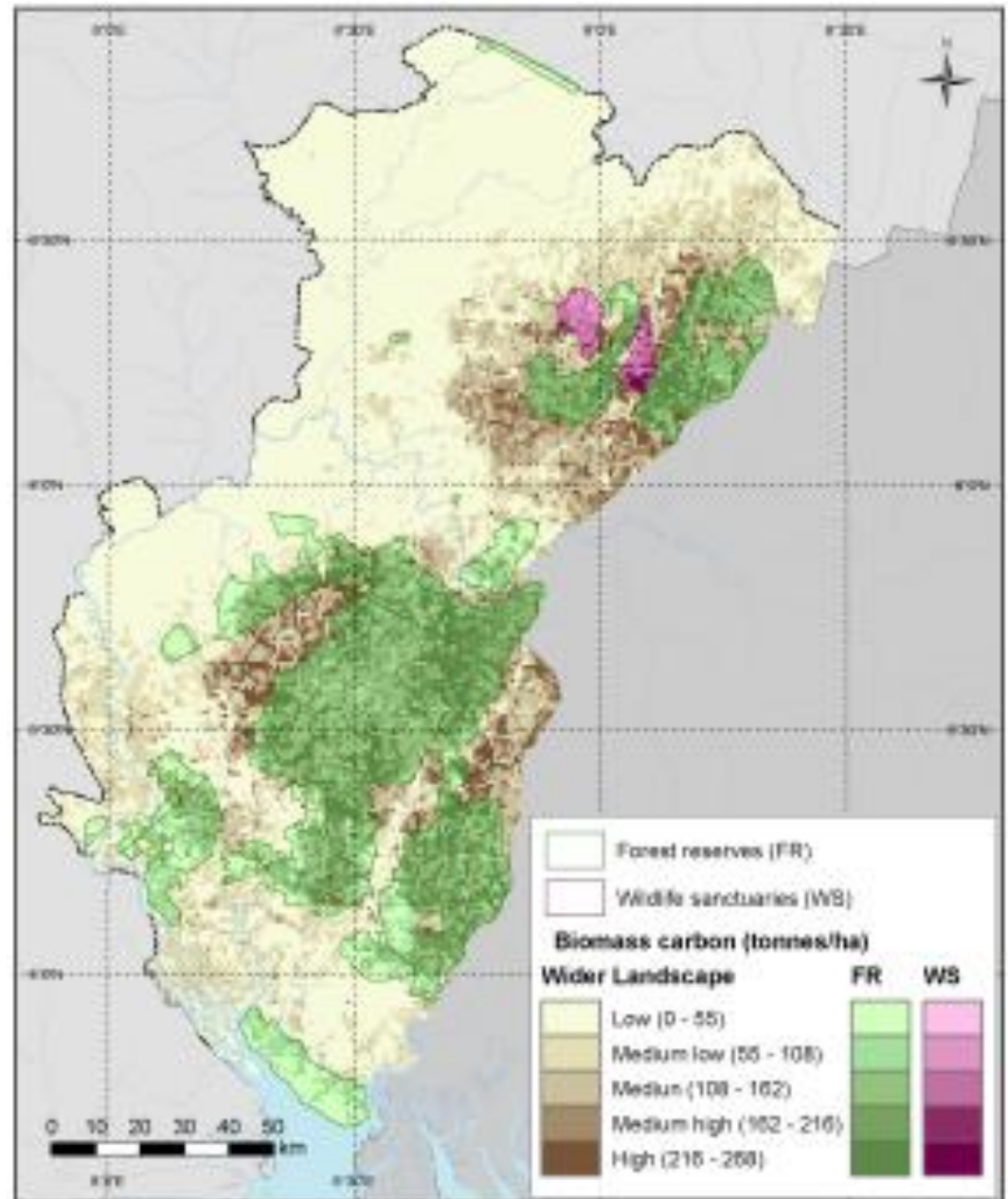
- ✓ REDD+ a le potentiel de produire de multiples bénéfices au-delà du carbone.
- ✓ Il peut promouvoir la conservation de la biodiversité
- ✓ Services écosystémiques sécurisés, comme la réglementation de l'eau, le contrôle de l'érosion et l'optimisation des produits forestiers autres que le bois.



Cartographie des multiples bénéfiques

Au-delà du carbone, où sont :

- Les animaux
- Les produits forestiers autres que le bois
- Les ressources en eau
- Les zones sensibles à l'érosion



Pourquoi cartographier les multiples bénéfiques ?

- ✓ Pour optimiser la planification de l'activité REDD
- ✓ Important de savoir où se situent les pressions appliquées au carbone et à la biodiversité
- ✓ Pour savoir ce qui se passe actuellement dans une zone particulière

REDD+ in Cross River State

What is REDD+?
 REDD+ (Reducing Emissions from Deforestation and forest Degradation +) is a mechanism intended to combat climate change by providing incentives for changing the ways in which forests are used and managed, so that emissions of greenhouse gases from forests are reduced and carbon sequestration is increased. REDD+ may require many different actions, such as protecting forests from fire or illegal logging or rehabilitating degraded forest areas.
*the "+" indicates the inclusion of the following three activities, conservation of forest carbon stocks, sustainable management of forests and enhancement of forest carbon stocks.

What are multiple benefits and REDD+ safeguards?
 REDD+ has the potential to deliver multiple benefits beyond carbon. For example, it can promote biodiversity conservation and secure ecosystem services from forests such as water regulation, erosion control and non-timber forest products. REDD+ may also carry some social and environmental risks; for example displacing the factors causing deforestation to other areas. REDD+ safeguards are intended to help guard against risks and enhance benefits from REDD+.

Within Cross River State, three pilot REDD+ areas have been identified.

Vegetation classes

Gorilla range

Forest/elephant

Protected areas

Biomass carbon (tonnes/ha)

Wider Landscape	FR
Low (0 - 55)	Light Green
Medium low (55 - 108)	Medium Green
Medium (108 - 162)	Dark Green
Medium high (162 - 216)	Very Dark Green
High (216 - 269)	Black

REDD Pilot Plots (RPP)
 Forest reserves (FR)
 Wildlife sanctuaries (WS)
 Gorilla range (GR)
 Elephant range (ER)
 Towns

Afi/Mbe pilot project
 High carbon stock
 Total: 11 Mt C, Biomass Density: 153 tc/ha
 Contains forest elephant and gorillas
 This pilot project has particular value in that it protects a elephant migratory corridor

Ekuri/Upkon/CR South REDD+ pilot
 High carbon stock
 Total: 19 Mt C Biomass, Density: 137 tc/ha
 Contains elephant and gorilla ranges
 This REDD+ area within the forest reserve and community forest has ecotourism potential due to the presence of forest elephant and gorillas

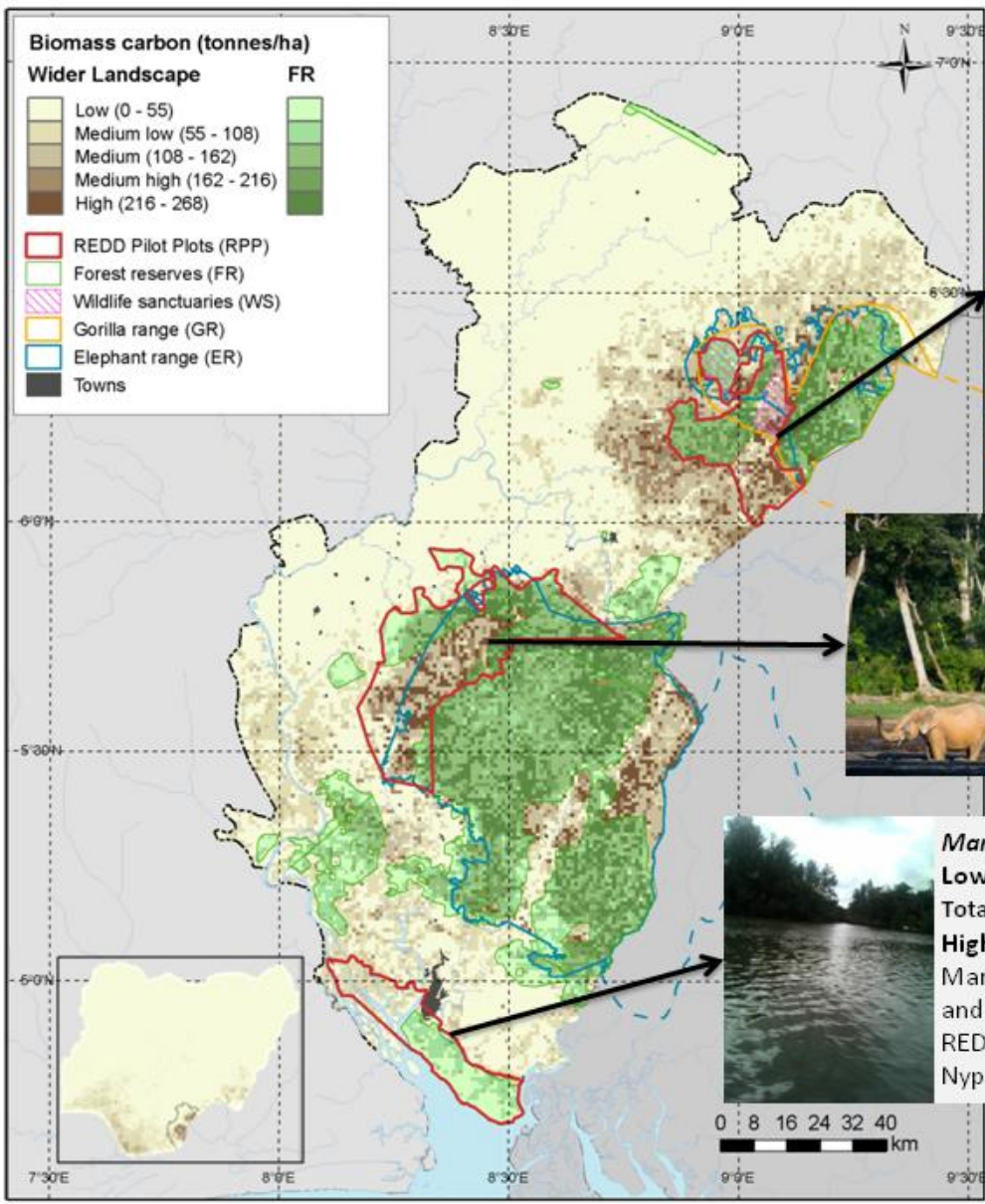
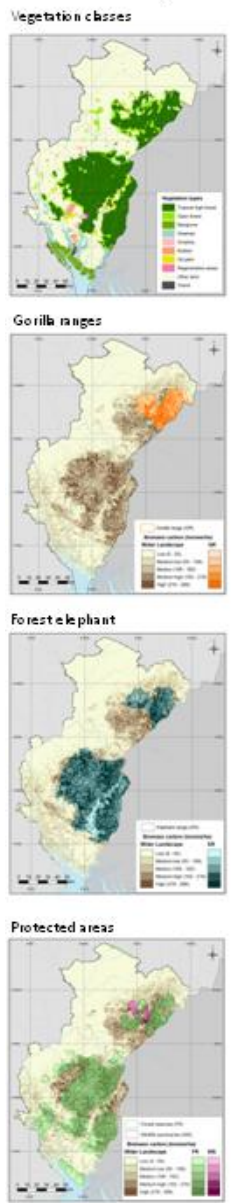
Mangrove REDD+ pilot project
 Low Medium carbon stock
 Total: 3 Mt C Biomass, Density: 66 tc/ha
 High ecosystem service value
 Mangroves have immense value for fisheries and protecting the coast from erosion. REDD+ actions could help address invasive Nypa palm and overharvesting

Planning for REDD+ in Cross River State
 Cross River State (CRS) has the highest forest cover of all of the Nigerian States and has been selected as the pilot state in preparation for REDD+. REDD+ actions can provide multiple benefits in CRS, such as contributing to conservation of important species like gorillas and forest elephants and helping to ensure continued supplies of timber and non-timber forest products to local communities.

Mapping key habitats, species distributions and ecosystem services in relation to carbon stock can help the Cross River State Forestry Commission in making informed decisions on REDD+. Decisions about where and how REDD+ actions are implemented will determine the benefits that may be realised and the risks that might occur. Careful planning can help to minimise risks and enhance benefits and thus address REDD+ safeguards. Future work will incorporate information on ecosystem services important to local communities and identify areas where forests are important in delivering them.

UN-REDD Programme, Cross River State Forestry Commission, and other partners. 2012. All rights reserved. For more information, visit www.un-redd.org

Pourquoi cartographier les multiples bénéfiques ?



Within Cross River State, three pilot REDD+ areas have been identified.



Afi/Mbe pilot project
 High carbon stock
 Total: 11 Mt C, Biomass Density: 153 tC/ha
 Contains forest elephant and gorillas
 This pilot project has particular value in that it protects a elephant migratory corridor



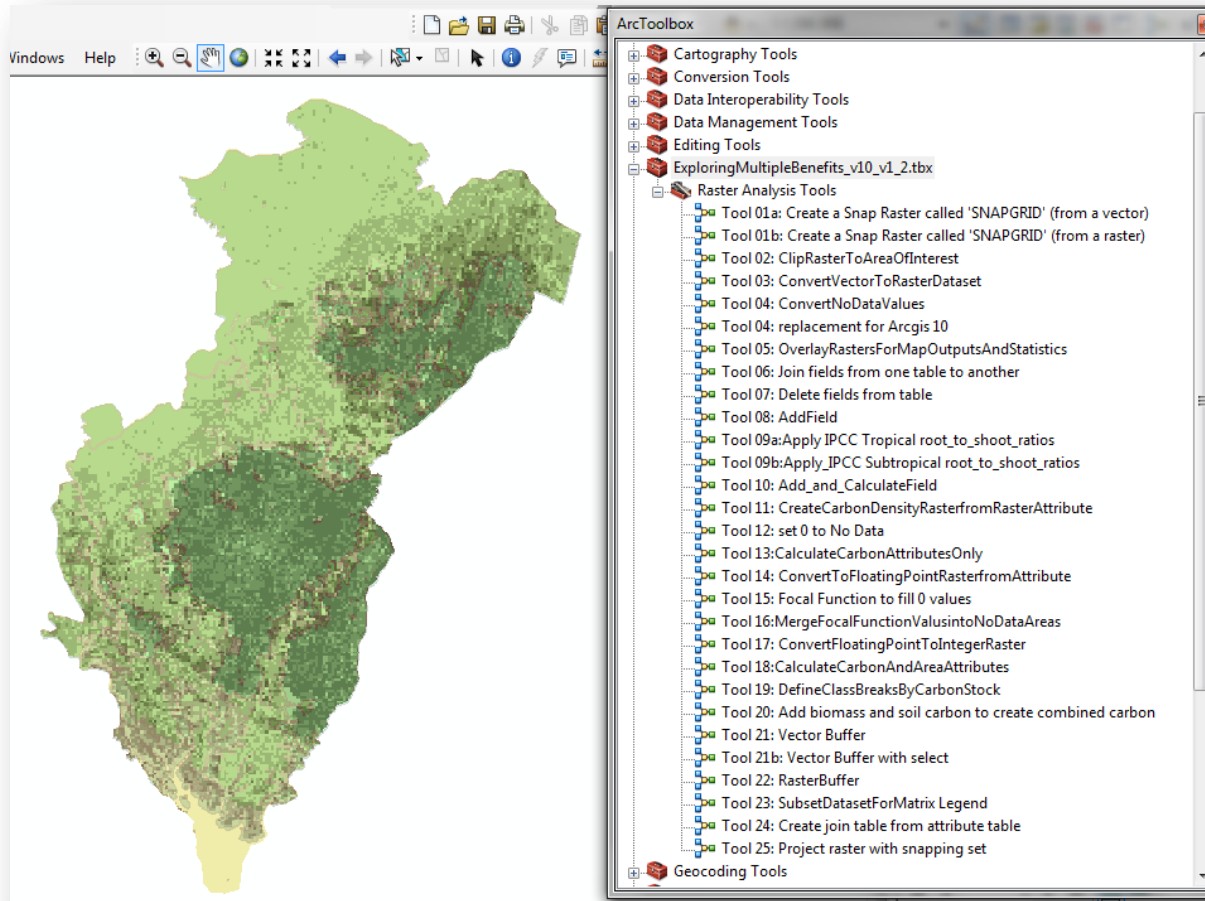
Ekuri/Upkon/CR South REDD+ pilot
 High carbon stock
 Total: 19 Mt C Biomass, Density: 137 tC/ha
 Contains elephant and gorilla ranges
 This REDD+ area within the forest reserve and community forest has ecotourism potential due to the presence of forest elephant and gorillas



Mangrove REDD+ pilot project
 Low Medium carbon stock
 Total: 3 Mt C Biomass, Density: 66 tC/ha
 High ecosystem service value
 Mangroves have immense value for fisheries and protecting the coast from erosion. REDD+ actions could help address invasive Nypa palm and overharvesting

Outils utilisés pour cartographier les multiples bénéfices

- L'analyse spatiale peut être effectuée en utilisant le “logiciel GIS”
- Des cartes ont été préparées en utilisant une boîte à outils spéciale pour analyser les multiples bénéfices, et un manuel accompagnateur



UN-REDD
PROGRAMME

Identifying and mapping
the biodiversity and
ecosystem-based
multiple benefits of
REDD+
*A manual for the
ExploringMultipleBenefits
tool*

UN-REDD PROGRAMME

16 December 2011

Working Document – version 1

Multiple Benefits Series 8



Future cartographie

Analyse, en soutien à la mise en place de précautions. Par exemple : où sont les risques potentiels liés à la suppression de la forêt ?

- ✓ Zones sensibles aux inondations
- ✓ Zones de glissements de terrains

